

Cartridge Manipulator

Version 1.0

Copyright 2014 Chris Schneider

Description

Cartridge Manipulator is a Windows program written in VB .NET and has been tested on Windows 7 32bit and 64bit as well as Windows 8 64bit.

Cartridge Manipulator has been created to give a GUI interface for creating cartridge binary files for use with Classic 99, Tursi's Multi-Cart and John Guidry's cartridge boards.

This program will join binary cartridge files and pad binary cartridge files.

****Note**** Follow the same rules outlined for Classic 99, Tursi's Multi-Cart and John Guidry's cartridge boards. Failure to follow documented guidelines will result in an unusable and you must start over!

Requirements

- Windows 7 32bit/64bit
- Windows 8
- .NET 4.5

Setup

Unzip contents of zip file to a directory example c:\cartman

All application files must reside in the same directory. See Figure 1

Process

Files included:

File	Description
Cartman.exe	Main application – Execute this file
Cartman.pdf	This document file
8k.bat	8k padding batch file
16k.bat	16k padding batch file
32k.bat	32k padding batch file
64k.bat	64k padding batch file
128k.bat	128k padding batch file
256k.bat	256k padding batch file
512k.bat	512k padding batch file
MultiMenu3c.bin	Binary multi-menu selection file that will be joined at the end of the multi-cart binary file.

Figure 1

Explanation

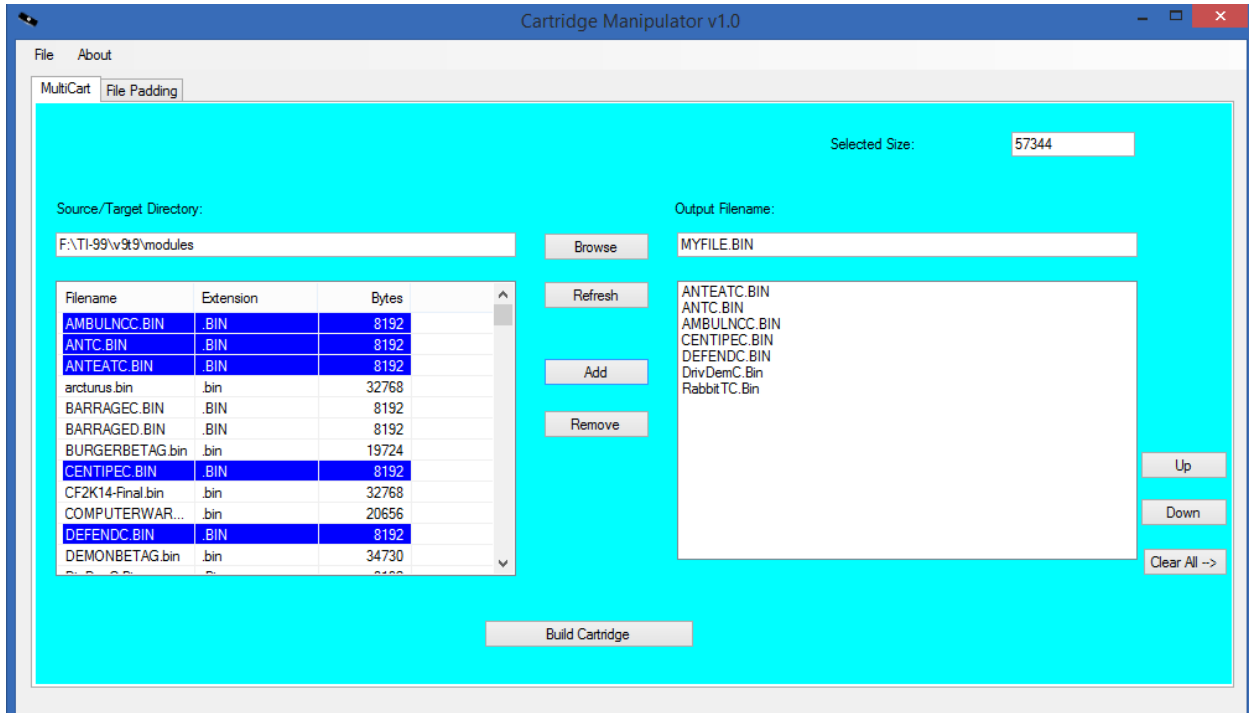


Figure 2

Buttons/Commands Figure 2

Button	Description
Browse	Browse to source/target directory
Refresh	Refreshes current directory in list window
Add	Adds selected binary file to project window (multi-select is not enabled)
Remove	Removes selected binary file from project window
Up & Down	Moves binary file up/down in project window
Clear All	Clears current project window and resets previous selected settings
Build Cartridge	Builds binary cartridge file based on data in project window (automatically adds the multimenu3c.bin file to the end of the binary file)

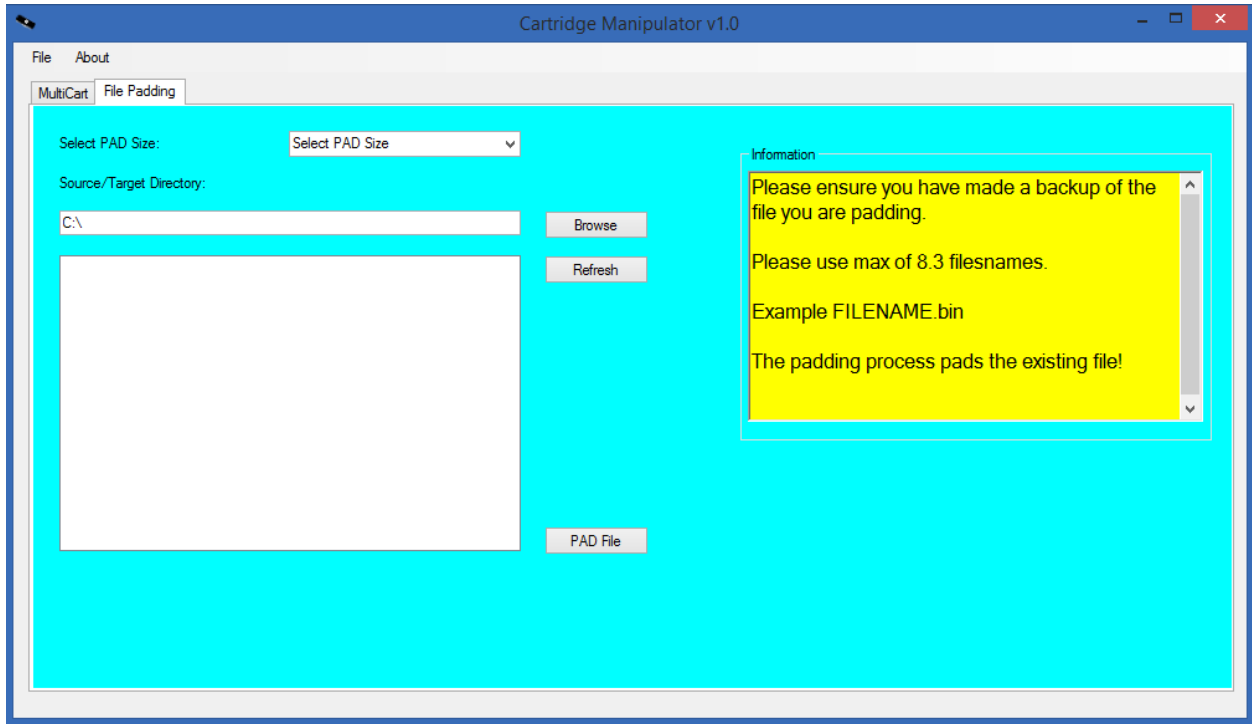


Figure 3

Buttons/Commands Figure 3

Button	Description
Select Pad Size	PAD File to selected size here
Browse	Browse to source/target directory
Refresh	Refreshes current selected directory
PAD File	Executes current file to be padded (this overwrites the selected file – make a backup!)