

ISSUE #10

OCTOBER 1987

FOR THE RECORD

BY ED BITNER

WELL, IF YOU THINK THIS ARTICLE WILL BE AS LONG AS TRICKY ZIC, FORGET IT. I'VE BEEN ASKED ONCE AGAIN TO ASSUME MY ELECTED DUTY AS RECORDING SECRETARY, AFTER A FOUR MONTH ABSENCE. I DO WANT TO THANK FRANK FOR DOING A FINE JOB. (JUST WAIT FRANK, ELECTIONS FOR THE NEW YEAR ARE COMING RAPIDLY.)

THE SEPTEMBER MEETING OF THE WEST PENN 99'ERS HAD A LOT FOR ALL AND THE ATTENDANCE WAS BOOMING. PRES. SCOTT COLEMAN TALKED OF HARRISBURG AND YOURS TRULEY BROUGHT THE NEWSLETTER LIBRARY AND TALKED ABOUT A FEW "LOW RENT" (PUBLIC DOMAIN) PROGRAMS ASSEMBLED ON A DISK, INCLUDING A BANNER PROGRAM, A WORD SEARCH PROGRAM, AND A KEYBOARD ORGAN PROGRAM. (NOW AVAILABLE IN THE LIBRARY FOR \$2.00 WITH A MONEY BACK GUARANTEE, ASK FOR WP-101.)

SCOTT ANNOUNCED THE AVAILABILITY OF HARDWARE MANUALS FOR \$12-\$15 , AND JOHN W. INTRODUCED THE CONCEPT OF A CARTRIDGE LENDING LIBRARY, FROM WHICH MEMBERS COULD BORROW ON A MONTHLY BASIS. SEE JOHN IF YOU ARE WILLING TO DONATE FOR THIS PURPOSE.

SOMEONE (YOU FILL IT IN _____) (ED. NOTE: JOE AND ROB EKL), PASSED OUT DOCUMENTATION FOR THE DM 1000. I HAD TO LEAVE BUT WHEN I RETURNED, I LEARNED THAT I HAD MISSED SOME EXCELLENT DEMONSTRATIONS, INCLUDING:

- * THE PROTOTYPE BOARD
- * THE SPEECH ADAPTER BOARD FOR THE PEB
- * THE LEGENDS ADVENTURE GAME
- * A LIGHT-PEN AND THREE SUPPORT PROGRAMS
- * JUNKMAN JR. (INCLUDING CHEAT MODE)
- * PORTABLE TI 99/4A

BOTH JOHN AND SCOTT WORKED VERY HARD ON MUCH OF THE ABOVE AND SHOULD BE CONGRATULATED AND ROB AND JOE EKL'S PORTABLE TI CONSOLE AND PEB STOLE THE SHOW.

THE RAFFLE PRIZE WAS A LIGHT-PEN BUILT LIKE A ... WELL BY JOHN W. AND ALSO A VERY POPULAR GAME DISK. BE AWARE OF THE COMING ATTRACTIONS ON OCT. 24-25, A COMPUTER SHOW AT TYSONS CORNER, VA. AND THE NOV. TI FAIR IN CHICAGO, IL. (SEE SCOTT)

RE-ESTABLISHINGLY SUBMITTED
SCOOPS BITTNER

SEPT. TREASURER'S REPORT

WHAT'S HAPPENING ?

BY JOHN F. WILLFORTH

FROM JAN TRAYERS

* 9/1	CASH BALANCE	\$ 45.25
* 9/15	LIBRARY SALES	18.00
* "	MICROPENDIUMS	21.50
* "	MEMBERSHIPS	32.50
* "	DISK, ETC.	133.90
* "	SALES	
* "	RAFFLE	26.00
* "	MANUALS	124.00
* "		-----
* "	TOTAL	\$401.15
* "	COST OF RAFFLE	
* "	PRIZE	- 15.00
* "		-----
* "		386.15
* 10/2	BANK DEPOSIT	- 340.90
* "		-----
* "	CASH ON HAND	45.25

* 9/1	BANK BALANCE	\$567.95
* 9/15	POSTAGE	- 57.02
* "		-----
* "		510.93
* 9/24	MICROPENDIUM	- 18.75
* "		-----
* "		492.18
* 9/25	TO SCOTT FOR	- 55.00
* "	CABINET	-----
* "		437.18
* 10/2	DEPOSIT	+ 340.90
* "		-----
* "	BALANCE	778.08

* "	TOTAL CASH BALANCE	\$823.33

I WOULD LIKE TO APOLOGIZE FOR THE LATENESS OF THIS NEWSLETTER. I HAD TO GO TO MINNESOTA FOR SOME ADDITIONAL TRAINING, AND THE TIMING WAS THE WORST. I'M TYPING THIS AFTER HAVING JUST ARRIVED HOME ONLY THREE HOURS AGO. I SAID HI! TO THE FAMILY, PUT A NEW PRINT WHEEL IN FAY'S TYPEWRITER, AND HERE YOU ARE.

I CHOSE THIS ORATOR FONT, TO SEE HOW YOU LIKE IT, IN THAT IT IS EASIER TO READ, AND DUPLICATE, VERSES A PRINT OUT ON A MATRIX PRINTER. NOW OLD TIMERS YOU SHOULD BE ABLE TO READ ANYTHING THAT I RETYPE OR ORIGINATE. THE ONE REAL DRAWBACK IS THAT THIS TYPEWRITER DOES NOT HAVE AN INTERFACE FOR THE TI SO THAT I CAN USE THE TI WRITER.

RALPH JONES, A WEST PENN 99'ER FROM MORROW BAY CA., WRITES THAT AFTER INVESTIGATING THE USE OF 3.5" TOSHIBA FLOPPY DRIVES ON THE TI SYSTEM, "JOHN HERE IS THE INFO. ON THE 3.5" DRIVE CONVERSION FOR THE TI-99/4A AVAILABLE FROM ALPHA SCIENTIFIC, DESCRIBED BY MR. LEO D. ROSS OF 7710 40TH AVE. E. TACOMA, WA. 98443."

"THE DRIVE IS 1/2 HT., FITS RIGHT INTO THE PEB, COMES IN TWO PACKAGES, THE DRIVE AND THE MOUNTING HARDWARE, ALL THAT IS NEEDED IS A SCREW DRIVER."

"IT IS DOUBLE SIDED AND CAN BE FORMATTED BY THE TI DISK CONTROLLER AS A SINGLE (90K), OR AS A DOUBLE SIDED (180K) UNIT. CORCOMP OR MYARC CONTROLLERS WILL FORMAT TO DSDD (360K)."

"I HAD TWO OF THE 3.5" DRIVES INSTALLED IN THE PEB BUT FOUND IT AWKWARD TO USE THEM IN THE VERTICAL POSITION, SO I MOVED THEM OUT TO AN EXTERNAL BOX. NOW I HAVE A 5 1/4" DRIVE AND TWO RAM DISKS IN THE PEB, THE 3 1/2" UNITS ARE IN THE EXTERNAL DRIVE BOX."

"I NUMBER THE DRIVES #1 = 3 1/2", #2 = 5 1/4", #3 = 3 1/2", #4 = RAM DISK #2, AND RAM DISK #1 CAN BE ASSIGNED ANY DRIVE NUMBER BETWEEN 1 AND 6." Ed. NOTE. THIS HAS SINCE BEEN ENHANCED WITH NEWER VERSIONS OF DM1000 AND THE NEW MENU FROM JOHN JOHNSON. "WHEN ASSIGNED A NUMBER WHERE THERE IS A DRIVE, SUCH AS #1, THE 3 1/2" DRIVE BECOMES A TRANSPARENT UNIT, (ALL COMMANDS TO DRIVE #1 ARE ANSWERED BY THE RAM DISK #1)."

"I AM VERY SATISFIED WITH THEIR USE. TWO OF THE MAJOR ADVANTAGES ARE, MECHANICALLY SUPERIOR DRIVE, AND A MUCH GREATER STORAGE CAPACITY"

THANKS TO RALPH FOR THIS INFO., AND TO MR. ROSS FOR TAKING THE TIME TO WRITE ABOUT HIS EXPERIENCE WITH THE 3 1/2" DRIVE. I SHOULD ALSO TELL YOU THAT THE 3 1/2" UNIT WE SPEAK OF HERE IS "PLUG COMPATIBLE" WITH THE CONTROLLERS MENTIONED ABOVE, MEANING THAT YOU PLUG THEM INTO THE SAME CONNECTORS THAT THE STANDARD 1/2 AND FULL HEIGHT DRIVES USED. HERE AGAIN IS THE ADDRESS OF THE SUPPLIER:
 ALPHA SCIENTIFIC P.O. BOX 626 CHESTERFIELD, MO.
 63006..... PHONE (314) 878-7117 (CENTRAL TIME)
 SATURDAY 10 A.M. TILL 2 P.M.

IF YOU FIND SOMETHING NEW THAT CAUSED YOU CONFUSION, OR MIGHT BE INTERESTING TO THE REST OF US, SHARE IT! WRITE TO ME, WE'LL SHARE IT. JFW WP99'ER

ANOTHER WAVE POWER PROGRAM.....

00000000000000000000000000000000
 from the LIGHT PEN of...
 BOB TRAUTMANN (412) 761-9380
 00000000000000000000000000000000

I now have a light pen, thanks to the Lord (and John Willforth!) and it really does work.

A light pen connected to a TI 99/4A will not tell you at what location on the screen the pen is touching, it will only tell you if it sees light or doesn't see light at the instant that the program tells it to check for light. If you are

writing a program and you want the user to branch to one of several subroutines or choose from a menu by using a light pen, you would first make a dark box at all of the possible locations that you expect the user to touch with the pen. Next make a white box at only one of those locations. Then check with the command CALL JOYST(1,X,Y) to see if the light pen sees the white light. (with my pen if it sees light Y= -4) If it did not see the light then the light pen was positioned somewhere else on the screen so you would make that box black again, make another box at a different location on the screen white and check again with the CALL JOYST(1,X,Y) command. Repeat this for all possible locations that the user might select to touch with the light pen. Repeat this loop again and again or until the pen sees the white light. At that instant the program would branch to a certain subroutine.

There are lots of ways that you can program: BLACK BOX, WHITE BOX, CHECK FOR LIGHT, BLACK BOX.

I will try to show you some in the months to come.

LET ME JUST SAY THIS, I ISSUED A CHALLENGE WHEN I FIRST WROTE THE WAVE POWER PROGRAM, BUT I AM VERY PLEASED TO HAVE RECEIVED MANY RESPONSES TO MY CHALLENGE. HERE IS THE MOST RECENT. YOU MAY WANT TO KEY IT IN AND TRY IT.

```

100 *****
110 * WAVE POWER II *
120 * RICHARD J. BAILEY *
130 * 68A CHURCH STREET *
140 * GONIC, N.H. 03867 *
150 *NEW HAMPSHIRE 99ERS*
160 *****
170 CALL CLEAR :: A$="ABCDEF GFEDCBABCDEF GFEDCBABCDEF GF
DCBA" :: FOR I=0 TO 6 :: CALL CHAR((97+I),(RPT$("00",I)
&"FFFF")):: NEXT I
180 FOR J=1 TO 12 :: PRINT " "&SEG$(A$,J,26):: NEXT J :
: X=X+1 :: IF X=8 THEN CALL CLEAR :: END ELSE 180
    
```

THANKS DICK.

PAUL BROCK OF THE WEST PENN 99'ERS SENT THIS SIMPLE "ONE FINGER ADDER PROGRAM"

```

100 INPUT A
120 B=B+A
130 PRINT ,B
140 GOTO 1
    
```

TYPE AND RUN THE ABOVE PROGRAM. YOU WILL SEE A (?), THE NUMERICAL PROMPT, AT THE BOTTOM LEFT OF THE SCREEN. TYPE THE NUMBER YOU WISH TO ADD FIRST, AND PRESS ENTER. THE (?) APPEARS AGAIN. ENTER THE NEXT NUMBER TO BE ADDED, AND PRESS ENTER. AFTER EACH ENTER, THE SUM WILL APPEAR TO THE RIGHT OF CENTER SCREEN. THIS PROGRAM ALLOWS YOU TO ADD NUMBERS USING ONLY ONE FINGER. THE OTHER HAND CAN KEEP TRACK IN A COLUMN OF NUMBERS.

THANKS PAUL.

FASTEXT-80 PRINTER OWNERS WHO WOULD LIKE TO RUN GRAPHX BUT WHO ARE AFRAID TO ENTER THE "PATCH", THERE IS NOW A PROGRAM WRITTEN BY JOE SPIEGEL, THAT WILL BY MENU, ALLOW YOU TO PATCH EITHER YOUR COPY OF THE "ORIGINAL" GRAPHX PROGRAM, OR THE VERSION SOLD BY TEX-COMP. THIS PROGRAM ALLOWS THIS TO BE DONE BY YOU TO THE COPY OF GRAPHX THAT YOU ACQUIRE BY LEGAL MEANS, WITHOUT YOU KNOWING ANYTHING ABOUT EDITING A DISK SECTOR, WHICH CAN BE DIFFICULT, AND VERY DANGEROUS. JOE WROTE PROTECTIONS INTO THE PROGRAM SO THAT IT IS ENTIRELY AUTOMATIC AND WILL CHECK IT'S OWN WORK. IF YOU NEED A COPY OF THESE TWO PROGRAMS, CALL ME BEFORE THE MEETING, OR WRITE, ENCLOSING \$1. FOR THE DISK CONTAINING HIS PROGRAM.

THANKS JOE FOR SUPPORTING TI USERS!

*****LEST I FORGET, THE PATCH LISTED ABOVE WAS CONCEIVED BY RICHARD CORDER OF THE WEST JAX 99'ERS P.O. BOX 176 ORANGE PARK, FL. 32067 SHOULD YOU WISH TO GET IN CONTACT WITH HIM ON ANYTHING DEALING WITH THE FASTEXT-80 PRINTER. HE HAS WRITTEN MANY ARTICLES IN SUPPORT OF THIS PRINTER ON THE TI SYSTEM.

THANKS DICK!

GETTING THE MOST FROM YOUR CASSETTE SYSTEM
 BY MICKEY SCHMITT
 NUMBER 15
 UNDERSTANDING - CREATING - AND USING - CASSETTE FILES
 PART IV

THIS MONTH I AM CONTINUING WITH THE TOPIC OF UNDERSTANDING - CREATING - AND USING - CASSETTE FILES. MORE SPECIFICALLY, I WILL BE CONTINUING WITH THE TOPIC OF... "HOW TO "OPEN" UP A CASSETTE FILE"... WHICH I FIRST BEGAN DISCUSSING TWO MONTHS AGO... IN PART II OF THIS PARTICULAR SERIES.

THE "OPEN MODE" ENTRY INSTRUCTS THE COMPUTER TO PROCESS THE CASSETTE FILE EITHER IN THE "INPUT MODE" WHERE FILES MAY BE READ ONLY... OR THE "OUTPUT MODE" WHERE FILES MAY BE WRITTEN TO ONLY. KEEP IN MIND THAT THE "NEW" "OUTPUT" FILE WHICH IS BEING CREATED WILL HAVE ALL THE CHARACTERISTICS GIVEN IT BY THE "OPEN" STATEMENT SPECIFICATIONS... INCLUDING THE STANDARD DEFAULT CHARACTERISTICS, AS WELL. NOTE... THAT IF YOU ARE USING TWO CASSETTE RECORDERS... ONLY CSI CAN BE SPECIFIED FOR AN "INPUT" FILE AND... BOTH CSI AND CSII CAN BE SPECIFIED FOR AN "OUTPUT" FILE.

AS A WORD OF WARNING: THE "OPEN MODE" SPECIFICATION IS REQUIRED. THERE IS NO DEFAULT SPECIFICATION FOR THIS ENTRY.

THE "FILE ORGANIZATION" ENTRY MUST BE "SEQUENTIAL" FOR A CASSETTE RECORDER. RECORDS ON A "SEQUENTIAL" FILE ARE READ OR WRITTEN... ONE AFTER THE OTHER... IN SEQUENCE... FROM BEGINNING TO END. YOU MAY HOWEVER, "OPTIONALLY" SPECIFY THE INITIAL NUMBER OF RECORDS ON A FILE BY FOLLOWING THE WORD "SEQUENTIAL" WITH A NUMERIC EXPRESSION.

IF YOU OMIT THE "FILE ORGANIZATION" SPECIFICATION... NO PROBLEM... THE T.I. COMPUTER WILL AUTOMATICALLY ASSUME THE DEFAULT SPECIFICATION... AS "SEQUENTIAL" ORGANIZATION.

IF ALL OF THIS SOUNDS WAY TOO CONFUSING FOR YOU... FEAR NOT... I FELT THE SAME WAY MYSELF! WITH THAT PARTICULAR THOUGHT IN MIND... I HAVE DECIDED TO CREATE A "REFERENCE CHART"... IN ORDER TO GET A BETTER UNDERSTANDING OF ALL THE "NEW MATERIAL" THAT I HAVE EXAMINED SO FAR. (PLEASE KEEP IN MIND... THAT THIS PARTICULAR "REFERENCE CHART" IS A CONTINUATION OF THE "REFERENCE CHART" WHICH FIRST APPEARED LAST MONTH... IN PART III OF THIS PARTICULAR SERIES.

```

*****
*
*           TO "OPEN" UP A CASSETTE FILE... FOLLOW THESE STEPS...
*
*****
*      1 0      *      1 1      *      1 2      *      1 3      *      1 4      *
*      *      *      *      *      *      *      *      *
*      N      *      *      *      N      *      *      *      N      *
*      E      *      OPEN MODE *      E      *      FILE..... *      E      *
*      D      *      ===== *      D      *      ...ORGANIZATION *      D      *
*      *      *      INPUT...READ *      *      *      ===== *      *      *
*      *      *      OUTPUT..WRITE *      *      *      SEQUENTIAL *      *      *
*      C      *      *      *      C      *      *      *      C      *
*      O      *      ***** *      O      *      ***** *      O      *
*      M      *      *      *      M      *      *      *      M      *
*      M      *      = YOUR CHOICE = *      M      *      SEQUENTIAL *      M      *
*      A      *      *      *      A      *      *      *      A      *
*****

```

NEXT MONTH I WILL CONTINUE WITH THE TOPIC OF UNDERSTANDING - CREATING - AND USING - CASSETTE FILES. MORE SPECIFICALLY, I WILL BE CONCLUDING THE TOPIC OF "HOW TO "OPEN" UP A CASSETTE FILE"... INCLUDING... THE CONCLUSION OF THE ABOVE CHART.

IN THE MEAN TIME... IF YOU NEED ANY HELP OR HAVE ANY QUESTIONS CONCERNING YOUR CASSETTE SYSTEM - JUST GIVE ME A CALL (412-335-0163) AND I'LL TRY TO HELP.

WANTED: TE-II, ADVENTURE CART. & TAPE, GAME CART.s, AND A PARALLEL INTERFACE.

CONTACT: PAUL BROCK 1707 LUXEMBURG MANOR N. APOLLO, PA 15673 (412)478-2754

YOU COULD HAVE INSERTED SOMETHING YOU WERE LOOKING FOR OR SOMETHING YOU WISHED TO TRADE OR SOMETHING YOU WISHED TO SELL IN THIS SPACE. MAYBE NEXT MONTH? THE WEST PENN 99'ER IS CIRCULATED TO 70 MEMBERS, 30 COMPLIMENTARY, AND OVER 125 USERS GROUPS THROUGHOUT THE US AND CANADA. LET'S USE THIS MEDIA, IT'S FREE!

HIGH-SCORING GAMES

GAME	SCORE	COMMENTS	DATE	NAME
ARCTURUS	15970		9-09-87	JACK SCHMITT
ARCTURUS	14040		5-28-87	TONY MAWHINNEY III
BURBERTIME	82600	PATTERN 21	9-04-85	MICKY SCHMITT
BURGER BUILDER	1000000	PATTERN 99 NEVER RUNS OUT OF PEPPER		ELEANOR ZIC
CENTIPEDE	301930		1-08-87	MICKY SCHMITT
COMPUTER WAR	2800		9-10-87	FRED MACKAY JR
COMPUTER WAR	2500		9-19-87	JACK SCHMITT
DIG DUG	262460			FRANK ZIC
DIG DUG	216740			ELEANOR ZIC
HUSTLE	MON 52	LOST 27 TIED ONCE		ELEANOR ZIC
JUMPY	131900	PATTERN 21		ELEANOR ZIC
JUNGLE JIM	10730		5-28-87	TONY MAWHINNEY III
MICRO PINBALL	1776500		5-18-87	NORM ROKKE
MICRO PINBALL	969500		6-27-87	MIKE SEALY
MIDNITE MASON	24720		6-16-87	FRANK ZIC
MIDNITE MASON	19340		6-28-87	ELEANOR ZIC
MOON PATROL	73150	LEVEL K CHAMPIONSHIP		MIKE SEALY
MUNCHMAN	202170	LEVEL 37	9-11-87	PAUL BROCK SR
MUNCHMAN	34660	LEVEL 11	9-13-87	MICKY SCHMITT
PACMAN	153000	LEVEL 17	9-10-87	GARY TAYLOR
PARSEC	47300	LEVEL 3	9-13-87	MICKY SCHMITT
POLE POSITION	105200			DAVID RENNER
SEWERMANIA	2600		9-09-87	JACK SCHMITT
TI INVADERS	15930		9-11-87	PAUL BROCK SR
INVADERS	9863	MERELY AGGRESSIVE	8-28-87	MICKY SCHMITT
TOMBSTONE CITY	23560	LEVEL 21 MASTER	9-11-87	PAUL BROCK SR

MORE ON THE EXCITING RAM DISKS.....
10/13/87 BY JOHN F. WILLFORTH
IF YOU ARE LOOKING FOR SHEAR SIZE, PRICE, FLEXIBILITY, DURABILITY, AND SUPPORT, THEN A MODIFIED HORIZON RAM DISK IS FOR YOU. THE NEW 1-MEGABYTE VERSION IS THE SAME HIGH QUALITY UNIT PRODUCED BY OUR FRIENDS AT HORIZON, BUT THE BOARD'S CAPACITY HAS BEEN INCREASED. THE DEVELOPMENT WAS DONE BY MIKE BALLMAN OF THE MIAMI U.G., AND THE KITS ARE BEING MARKETED BY BUD MILLS 166 DARTMOUTH DR. TOLEDO, OH 43614

PRICES ARE EXCEPTIONAL:
96K (SSSD)\$100.
192K (DSDD OR 2-SSSDs).....\$135.
384K (DSDD OR COMBINATIONS).....\$175.
512K (UP TO 5-SSSDs OR COMBINATIONS).....\$195.
1-MEG (2-DSDD + 1-256K OR COMBO'S)....\$375.
(PRICE INCLUDES S/H, DOCUMENTATION, OPERATING SYSTEM, BARE BOARD, ALL PARTS!) QUITE A DEAL!

ADDITIONAL NOTE, I JUST TALKED TO THE MAN WHO IS THE KEEPER OF THE MENU, JOHN JOHNSON, AND FOUND THAT HE HAS COMPLETED THE CONFIGURE PROGRAM TO SUPPORT THE 1-MEG RAM DISK, AND THIS WILL BE IN VERSION 7. I HOPE THAT THIS WILL ANSWER THE QUESTION MANY WILL ASK, "YES, BUT IS IT SUPPORTED BY THE MENU PROGRAM?"

ADDITIONAL, ADDITIONAL NOTE, YOU WILL GET ALL THE PARTS TO BUILD THE 1-MEG VERSION ABOVE WHEN YOU ORDER THE BASIC UNIT, LESS ONLY THE APPROPRIATE RAM CHIPS. IE: IF YOU ORDER THE 96K VERSION FOR \$100., THE ONLY PARTS YOU WILL HAVE TO GET AT A LATER DATE TO UPGRADE WILL BE THE 62256LP STATIC RAM CHIPS TO TAKE IT UP TO YOUR DESIRED CAPACITY. THESE BY THE WAY ARE AVAILABLE FROM BUD MILLS, OR IF YOU CAN DO BETTER ELSE WHERE (I DOUBT THIS) FROM ANOTHER SUPPLIER.

I'M GOING TO TRY TO PUT AN ARTICLE TOGETHER BY THE NEXT NEWSLETTER, ON ALL THE RAM DISKS IN PRODUCTION OR ABOUT TO COME OUT TO HELP YOU TO DECIDE WHICH WAY YOU WOULD LIKE TO GO.

RECENTLY, I BROKE MY PREVIOUS "HIGH-SCORE" IN MY ALL-TIME FAVORITE ARCADE GAME, WHICH MANY OF YOU KNOW IS "CENTIPEDE". HOWEVER, I FOUND OUT THAT I AM NOT THE ONLY ONE OUT THERE WHO HAS A "FAVORITE" GAME OR A "HIGH-SCORE" TO BOAST ABOUT WITH THIS THOUGHT IN MIND, I HAVE DECIDED TO START A NEW COLUMN, IN OUR WEST PENN NEWSLETTER. IF YOU KNOW "BEAT" ANY OF THE SCORES THAT ARE LISTED IN THIS COLUMN - JUST LET ME KNOW AT ANY OF THE WEST PENN MEETINGS AND I'LL PUBLISH IT IN THE NEXT NEWSLETTER. ANY ARCADE GAME FOR THE TI IS ACCEPTABLE FOR THIS COLUMN, AND YOU MAY SUBMIT YOUR HIGH-SCORES AS OFTEN AS YOU WISH. LET'S GET AS MANY PEOPLE INVOLVED IN THIS ENDEAVOR AS POSSIBLE. REMEMBER, A LITTLE "FRIENDLY" COMPETITION, MAY JUST "SPARK" SOME UNDERLYING INTEREST AND ENTHUSIASM!

I WOULD LIKE TO TALK BRIEFLY TO YOU, THE USER. I HOPE THAT THE TERM USER MEANS ONE WHO USES THE COMPUTER TO IT'S FULLEST. I HOPE THAT USER MEANS ONE WHO ENJOYS THE FRUITS OF OTHER USERS AND PROVIDES FOR OTHER USERS THE FRUITS OF YOUR OWN STRUGGLES. WITH THIS MUTUAL SHARING WE WILL ALL BENEFIT.

SOME MUST CHARGE FOR THE DISK, THE CASSETTE, THE PAPER, THE POSTAGE, THE HARDWARE ITEM, THE PROGRAM THAT GIVES US THE THRILL AND ALLOWS US TO SHOW SOMEONE WHAT OUR COMPUTER CAN DO! WHY THEN IF YOU CAN'T CONTRIBUTE IN ANY OF THE AREAS ABOVE, DO YOU CHANGE THE DEFINITION OF USER TO SOMETHING THAT IS IN MY OPINION BELOW THE PLANE OF THE EARTH. YOU DO THIS BY REMOVING CREDITS FROM PUBLIC DOMAIN PROGRAMS, BY USING FREWARE PROGRAMS WITHOUT PAYING FOR THEIR USE ON A REGULAR BASIS, BY NOT TEACHING OR SHARING WHAT YOU HAVE LEARNED WITH OTHERS. YOU ARE A USER, BUT NOT IN THE SENSE THAT COMPUTER ENTHUSIASTS LOOK AT IT, BUT IN THE TERMS THAT THE PUBLIC LOOKS ON A USER. IF YOU ARE UNABLE TO GET THE IMPLICATION I'M MAKING THEN YOU'RE EITHER NOT GUILTY OR SO SELF-GRATIFYING THAT YOUR POSITION IN SOCIETY WILL ALSO REFLECT YOU AS A USER.

I'M GUILTY OF INFRACTIONS ON MUCH OF THE ABOVE, BUT WHERE I CAN, I WILL TRY TO CORRECT AS MUCH AS I BECOME AWARE OF. MY PURPOSE IS TO PERHAPS GET YOU TO THINK ABOUT IMPROVING THE WAY YOU TREAT THE FRUITS THAT ARE PROVIDED YOU BY OTHERS, AND MAYBE GETTING YOU TO SHARE. YOU'LL BE SUPRISED HOW GOOD IT FEELS TO SHARE.

JOHN F. WILLFORTH WP99ER 10/13/87

ON THE PREVIOUS PAGE (PAGE 5) I GOT CARRIED AWAY WITH MUTUAL SUPPORT AND NEVER DID GET TO ALL THE THINGS I WANTED TO BRING UP.

SOME MONTHS AGO WE RECEIVED AN OFFER FOR A COUPLE OF RYTE DATA SUBSCRIPTIONS IN EXCHANGE FOR AN ADVERTISEMENT SPOT IN AN ISSUE OF OUR NEWSLETTER. WE ACCEPTED, PRINTED THE AD, AND THE TWO PEOPLE RECEIVED ISSUE(S). AT THIS TIME I'M NOT SURE TO WHAT DEGREE THE AGREEMENT HAS BEEN FULFILLED TO DATE. I HAVE READ IN A FEW NEWSLETTERS OF SOME CONCERN ABOUT RYTE DATA, AND IT'S COMMITMENT TO THE TI COMMUNITY.

I'VE HAD SOME DEALINGS WITH BRUCE RYAN, AND I FEEL THAT HE IS ALWAYS MAKING A GENUINE EFFORT TO SUPPORT THE TI AND COMPATIBLES. THE PROBLEM IS THAT MANY OF THE SOFTWARE, THE HARDWARE AND OTHER OFFERINGS OF RYTE DATA HAVE NOT BEEN SUPPORTED AS THEY SHOULD BE BY MANY IN THE TI COMMUNITY. IT IS MORE DIFFICULT FOR A CANADIAN COMPANY TO COMPETE IN THE US BECAUSE OF THE PRICE DIFFERENCES, BUT RYTE DATA HAS BY CLOSE MARGINES BEEN ABLE TO MARKET THEIR PRODUCTS HERE.

BRUCE HAS FOUND IT DIFFICULT TO CARRY OUT HIS SIDE OF THE BARGAIN, AND HAS ASKED FOR OUR HELP IN EXPANDING HIS MARKET. WE WILL ALL RECEIVE BENEFITS HERE IN THAT WE CAN SUBSCRIBE TO RYTE DATA IN A BULK FASHION IN QUANTITIES OF 5 OR MORE MAILED TO SEPARATE ADDRESSES AT \$12. PER SUBSCRIPTION, AND \$11. PER SUBSCRIPTION IF MAILED TO THE SAME ADDRESS. LET'S TAKE BRUCE UP ON THIS. THE MAGAZINE IS FULL OF STUFF YOU WON'T FIND ANYWHERE ELSE. I'M GOING TO BRING THIS UP AT NEXT WEEKS MEETING OF THE WEST PENN 99'ERS.

RYTE DATA IS ALSO OFFERING 10% DISCOUNTS ON GROUP ORDERS FOR MONTY SCHMIDT'S "TECHNICAL DRIVE" AS WELL AS THE NEW PROGRAM "COMMAND DOS" WHICH CAN BE PURCHASED AT 10% DISCOUNT FOR THREE OR MORE ORDERS.

BRUCE CLOSED HIS LETTER WITH THIS STATEMENT "SUPPORT IS A MUTUAL AGREEMENT", AND THIS IS TRUE. IF WE EXPECT RYTE DATA TO SUPPORT USERS, WE THEN MUST ALSO SUPPORT RYTE DATA.

I HOPE THAT YOU DON'T THINK THAT I'M SUPPORTING ANY ONE SUPPLIER TO THE TI COMMUNITY, BUT IT IS IMPERATIVE THAT THIS STATEMENT OF SUPPORT IS FOR ALL WHO SUPPORT US.

**FAIR TIMES AND PLACES:
CHUGCON 87**

OCTOBER 24 & 25 SHERTON TYSONS CORNER TYSONS CORNER, VA
HEATH/ZENITH/TI-99 AND COMPATIBLES ADMISSION \$3. UNDER 16 FREE.
SAT. 9 - 5, SUN. 9 - 3 BANQUET SUNDAY 5 PM. INFO. (703) 777-2017

TI FAIRE

NOVEMBER 7TH TRITON COLLEGE 2000 5TH AV RIVER GROVE,
TI-99/4A AND COMPATIBLES ADMISSION \$3.

TI FAIR WEEKEND

NOVEMBER 8TH QUALITY INN AIRPORT 5311 S. HOWELL AV.
CONTINUATION OF TI FAIR (414)481-2400 MILWAUKEE, WI 53207
SUN. 9 - 4 ADMISSION \$2.

TI XPO 88

FEBRUARY 27 & 28 PALACE STATION HOTEL CASINO LAS VEGAS, NV
TI-99/4A AND COMPATIBLES INFO. CALL (702)647-1062 OR 878-3167
REDUCED RATES FOR ROOMS AND AIR FARES FROM PSA

DALLAS TI FAIR

APRIL 30TH DALLAS, TX
TI-99/4A AND COMPATIBLES FOR INFORMATION CONTACT RICHARD FLEETWOOD
(214) 328-9257 EVENINGS ARMADILLO BYTES

*** NEW UNUSED SPEECH SYNTHESIZERS.....ONLY \$22.50 POSTAGE PAID.

*** WRITE: MARK McCLELLAN Box 308 McKEESPORT, PA 15134-0308

TI PARTS, TI-99/4A HARDWARE, AND SOFTWARE AVAILABLE FROM COMPUTER & ELECTRONICS

HARDWARE/SOFTWARE OF ALL KINDS FOR THE TI, NEW AND 1521 FERRY STREET
USED. IF THEY DON'T HAVE IT THEY CAN GET IT! LAFAYETTE, IN 47901
(L.L. CONNER ENTERPRISE) (317) 742-8146 OR 423-4879

FOR YOU FUNNELWEBERS, THERE IS EXCITING NEWS FROM AUSTRALIA ABOUT AN MS-DOS SYSTEM UNDER DEVELOPMENT BY WILL MCGOVERN SON OF TONY MCGOVERN. I SHOULD SAY FOR ALL TIERS. WILL HAS PRETTY MUCH COMPLETED THE MS-DOS DISK HANDLING CODE. THE PROGRAM AUTOMATICALLY SENSES WHETHER IT HAS A TI OR MS-DOS DISK AND CATALOGS APPROPRIATELY. THE ROUTINE HANDLES MS-DOS 3.2 SUBDIRECTORIES WITH EASE, AND CAN FORMAT MS-DOS DISKS. CURRENTLY RUNS ON MYARC DISK CONTROLLER (DSDD) BUT BECAUSE OF IT'S MODULAR CONSTRUCTION CAN BE PORTED TO OTHER CONTROLLERS SUCH AS CORCOMP. (ED. NOTE: IF YOU HAVE A SPARE CORCOMP PEB DISK CONTROLLER AND WILL NOT NEED IT FOR A YEAR, WHY NOT SEND IT TO THE MCGOVERNS TO ENABLE THEM TO COMPLETE THEIR DRIVER FOR CORCOMP) IF YOU WOULD LIKE TO SEND THEM SOMETHING FOR THE FUNNELWEB SOFTWARE YOU MAY BE USING, HV 99'ERS 6 APRICOT CLOSE, TARRO, NEW SOUTH WALES, AUSTRALIA 2322

T. I. Writer Part 14 (S. Katzman)

The last sections we will deal with has to do with form letters. There are two ways of making form letters in T. I. Writer. The first way is with the "values" being entered from the keyboard for each individual form letter. The second method is to use a value file on disk. We will discuss the first one in this issue.

In order to do this one composes the letter in the Editor for use in the Formatter. Let us use a specific example.

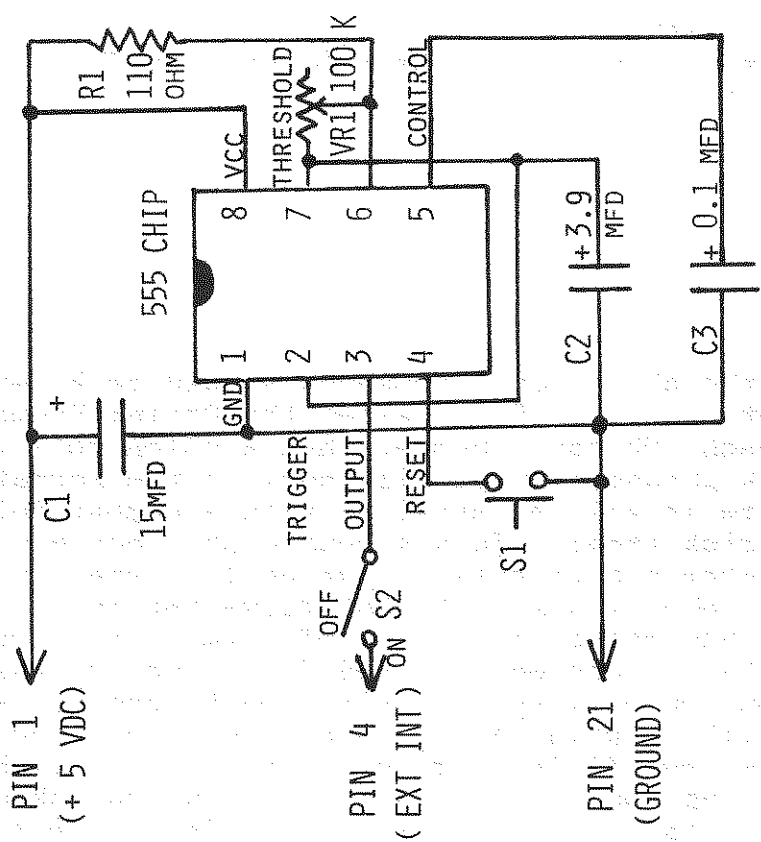
```
.LM 10
.RM 70
.FI
.IN 40
.SP 8
.DP 1:DATE
*1*
.IN 0
.SP 5
.DP 2:CO NAME
.DP 3:CO ADDRESS
.DP 4:CO CITY STATE AND ZIP
*2*
*3*
*4*
.SP 2
.IN +5
.DP 5:ITEM NAME
.DP 6:MAGAZINE NAME
Would you please send me information about your *5* that I
saw advertised in *6*.
.SP 6
.IN 40
Thank you
.SP 4
Joe Smith
11 Main St.
Anycity, State 00000
```

All of the above "dot" commands should be known to us by now except ".DP". .DP is called the Define Prompt. If you notice each .DP has a number then a colon followed by a phrase. This phrase is what will show on the Formatter screen. There is also an asterisk with a number followed by another asterisk (*6*). This second number corresponds to the first number and it puts the value from the .DP where you want it. When you go into the formatter answer N to mailing list and enter the number of form letters you want when the number of copies is asked for. Then on the bottom of the screen you will see the word 'DATE' and you enter the date which will be printed on the printer, continue this and you will have your finished form letter. It will then repeat depending upon the number of copies you asked for. Obviously this is not for a lot of form letters but if you want a few letters it is fine.

THIS IS THE LAST OF THE SERIES FROM STAN ON TI WRITER. IF YOU HAVE ANY QUESTIONS, HE'LL BE GLAD TO ASSIST YOU. JUST CALL (412) 837-8275. NEXT MONTH PASCAL SERIES STARTS!

SOME OF YOU HAVE ASKED ABOUT A CIRCUIT TO SLOW DOWN THE TI 99/4A CONSOLE IN ITS OPERATION. WELL, RATHER REINVENT THE WHEEL, I DECIDED TO REDRAW AND INCLUDE AN ARTICLE WRITTEN BY MACK MCCORMICK, AND CARRIED IN THE DECEMBER 1986 ISSUE OF MICROPENDIUM. HE DESIGNED A VERY SIMPLE CIRCUIT TO INTERRUPT THE THE 9900 CHIP AT RATES WHICH COULD BE ADJUSTED, AND THUS VARY THE SPEED THAT THE TI-99/4A WOULD APPEAR TO RUN. THE SMALL CIRCUIT IS LOCATED INSIDE THE SPEECH SYNTHESIZER, AND DOESN'T REQUIRE OPENING THE CONSOLE. YOU CAN PUT IT INSIDE THE CONSOLE VERY EASILY IF YOU WISH.

CONNECTOR ON SPEECH SYNTHESIZER

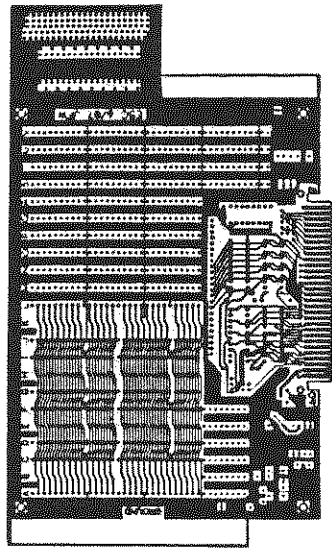


PARTS LIST:

- IC NE555 OR 7555 IC CHIP
- R1 110 OHM 1/4 WATT RESISTOR
- VR1 110K OHM POTENTIOMETER
- C1 15MF 10 VOLT ELECTROLYTIC CAPACITOR
- C2 3.9MF 10 VOLT ELECTROLYTIC CAPACITOR
- C3 0.1MF 10 VOLT CAPACITOR
- S1 SINGLE POLE MOMENTARY CONTACT MINI-SWITCH
- S2 SINGLE POLE SINGLE THROW MINI-SWITCH

SU BLE KNOB, PERF. CIRCUIT BOARD, SOCKET IF DESIRED

THE COPY BELOW IS FOR THE PROTYPE BOARD THAT SCOTT AND I DESIGNED. WE HAVE SOLD NEARLY ALL OF THE FIRST ONE-HUNDRED ORDERED, AND HAVE ANOTHER ONE-HUNDRED AND FIFTY ORDERED FOR THE ORDERS WE EXPECT AS THE ADS APPEAR IN RYTE DATA, THE MICROPENDIUM, AND IN VARIOUS NEWSLETTERS AND BBSS. JFW



NEW PROTOTYPING BOARD AVAILABLE

It's finally here! The PEB PROTOTYPING BOARD, which may just "make your day." This board is designed for Peripheral Expansion Box (PEB) use, and will allow for the assembly of a kit or the design of a NEW IDEA. The design incorporates many ideas from the original TI Prototyping Board, plus some NEW ideas, and makes the assembly of TODAY's state-of-the-art components such as high speed static RAMs a snap. The picture above illustrates the layout of the component side of the board and shows the major areas.

- * The board also supports the 99/8 and 99/40 (Geneve) environments.
- * The standard bus interface is predefined, requiring only the insertion of four IC's to buffer the address lines, data lines, and eight of the control inputs.
- * The address and data busses appear in a convenient row above the interface chips, numbered A00-A15 and D00-D07 in order.
- * Connections to all control signals are provided, including the three additional address lines and DMA signals for the Geneve.
- * Power from a 5 volt regulator is distributed across the back of the board.
- * Space is provided for a second regulator to supply +12, -12, or -5 volts.
- * Two RAM busses each have room for four 28-pin chips. Using 62256LP-12 static RAMs in each location would give you 256K bytes before piggybacking.
- * The board is wide enough to reach the card guides in the PEB for a secure fit.
- * There is room for the I/O connector of your choice to access the outside world.

Extensive documentation is included, covering all signals on the 60-pin PEB bus. A separate copy of the TI hardware specifications (not included) is strongly recommended, however. Two sample project schematics are included. More ideas for projects using this board will be collected and made available in the future.

Boards may be purchased for \$35/board + \$2.50 5&K (PA res add 6%) from:

The Computer Bug
5075 Clairton Blvd
Pittsburgh, PA 15236

Technical Questions:
John Williforth
RD 1 Box 73A
Jeannette, PA 15644
412-527-6656

Quantity Orders: (10+, \$25)
Scott Coleman
823 North Ave
N. Braddock, PA 15104
412-271-6283

412-882-3374

Do you have an telephone answering machine? Are you tired of using your or your partner's banana split voice? Want to create something distinctive? Using console basic and the TERMINAL EMULATOR II, (TI speech unit required) you can do just that!

This program creates a unique announcing message. Before using, replace the name DENNIS with your own or whatever name you choose in line 140 unless of course your name happens to be DENNIS. You can delete or change lines 180-200 if the repeat feature is not wanted.

Changing the parameters in line 110 will change the pitch and slope. For more information on doing this, see page 34 of the TERMINAL EMULATOR II instruction manual. Also see the manual for information on inflection, stress points, pause and break characters.

A N S W E R I N G M A C H I N E

```

100 OPEN #1:"SPEECH"OUTPUT
110 PRINT #1:"//30 96"
120 PRINT #1:"HELLO. "
130 PRINT #1:"I AM A COMPUTER. "
140 PRINT #1:"DENNIS IS NOT
    AVAILABLE RIGHT NOW. "
150 PRINT #1:"IF YOU WISH
    HIM TO RETURN YOUR CALL"
160 PRINT #1:"please leave your
    NAME, PHONE NUMBER, AND MESSAGE
    AFTER THE BEEP TONE. "
170 PRINT #1:" THANK YOU. "
180 FOR A=1 TO 1500
190 NEXT A
200 GOTO 120
    } DELETE AFTER TESTED.
    
```

FROM THE SHAWNEE MISSION U.G.....

How to eliminate the auto-start on D/F 80 (E/A option 3) program.

Using a disk editor, find a string that has this exact string:
 "20314523462020" and convert it to "20202020202020".

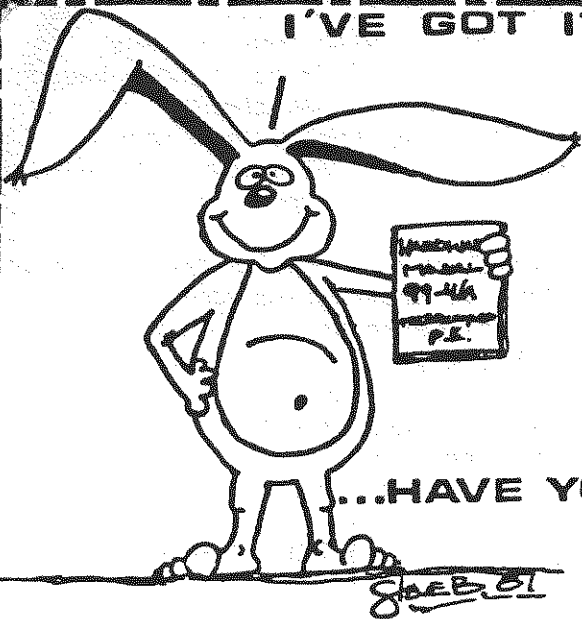
```

10 REM - BASE 2 CARD TRICK
20 REM - BY MICHAEL W. ECKER,
30 REM - SCRANTON, PA.
40 RESTORE:REM INITIALIZE DATA TABLE
45 PRINT
50 PRINT"BASE 2 CARD TRICK"
55 PRINT
60 PRINT"PLEASE THINK OF A WHOLE NUMBER FROM 1 TO 63"
70 PRINT:FOR Z=1 TO 800:NEXT Z:REM TIME DELAY
80 PRINT:PRINT:PRINT
90 INPUT"PRESS <ENTER> (OR RETURN) TO CONTINUE":X$
100 PRINT
110 S=0
120 FOR J=1 TO 6
130 T=1
135 PRINT TAB(5);
140 FOR K=1 TO 32
150 READ A
180 IF A < 10 THEN PRINT A;" "":GOTO 200:REM 3 SPACES IN QUOTES
190 PRINT A;" "":REM 2 SPACES IN QUOTES
200 IF K=4-T THEN PRINT:PRINT TAB(5):T=T+1
210 NEXT K
220 PRINT
230 INPUT"DOES YOUR NUMBER APPEAR ON SCREEN (Y OR N)":N$
240 IF N$="Y" THEN S=S+2[(J-1):REM "I" IS EXPONENTIATION
250 IF N$ <> "Y" AND N$ <> "N" THEN GOTO 230
    
```

```

260 N$=" "":REM ONE SPACE
270 NEXT J
280 PRINT
290 FOR Z=1 TO 500:NEXT Z
300 PRINT"OKAY, CONCENTRATE VERY HARD NOW..."
310 PRINT"I AM READING YOUR MIND..."
320 FOR Z=1 TO 800:NEXT Z
330 PRINT:PRINT:PRINT"YOUR NUMBER IS ";S
340 FOR Z=1 TO 500:NEXT Z
350 PRINT
360 INPUT"DO YOU WISH TO PLAY AGAIN (Y OR N)":X$
370 IF X$="Y" THEN GOTO 40
380 GOTO 510
390 DATA 1,3,5,7,9,11,13,15,17,19,21,23,25,27,29,31,33,35,37
400 DATA 39,41,43,45,47,49,51,53,55,57,59,61,63
410 DATA 2,3,6,7,10,11,14,15,18,19,22,23,26,27,30,31,34,35,38
420 DATA 39,42,43,46,47,50,51,54,55,58,59,62,63
430 DATA 4,5,6,7,12,13,14,15,20,21,22,23,28,29,30,31,36,37,38
440 DATA 39,44,45,46,47,52,53,54,55,60,61,62,63
450 DATA 8,9,10,11,12,13,14,15,24,25,26,27,28,29,30,31,40,41
460 DATA 42,43,44,45,46,47,56,57,58,59,60,61,62,63
470 DATA 16,17,18,19,20,21,22,23,24,25,26,27,28,29,30,31,48,49
480 DATA 50,51,52,53,54,55,56,57,58,59,60,61,62,63
490 DATA 32,33,34,35,36,37,38,39,40,41,42,43,44,45,46,47,48,49
500 DATA 50,51,52,53,54,55,56,57,58,59,60,61,62,63
510 END
    
```

I'VE GOT IT!..



...HAVE YOU?

8 FEB 81

HARDWARE MANUAL FOR THE TI 99 / 4A

IT DESCRIBES:

- CONSOLE DESIGN
- CUSTOM CHIP OPERATION
- TMS 9900 H/W ORGANIZATION
- TMS 9900 INSTRUCTION SET
- INTERFACING PITFALLS
- CONSOLE SCHEMATICS
- PEB CARD DESCRIPTION
- GROM SIMULATOR DESIGN
- EXTENDED BASIC MODULE DESCRIPTION & SCHEMATICS

WEEKEND HARDWARE SEMINAR (INFORMATION AVAILABLE ON REQUEST)

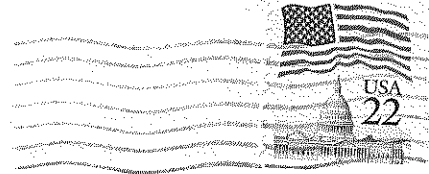
Send \$19.95 Check or Money Order To: (CANADA & FOREIGN SEND \$21.50 U.S. FUNDS) (VOLUME RATES AVAILABLE... ON REQUEST)

THE BUNYARD GROUP PO BOX 53171, LUBBOCK, TX 79453



THE WEST PENN 99'ERS

% JOHN F. WILLFORTH R.D. # 1 BOX 73A JEANNETTE, PA 15644



CHECK THE MEETING DATE!!!! THIS COMING TUESDAY OCT 20 7:00 PM COME EARLY!! DON'T MISS IT!

MICKEY SCHMITT 196 BROADWAY AVE. LOWER BURRELL PA 15068