



Newsletter

APRIL 83

Issue 4 Vol. 2

Price \$1.00



**NEXT MEETING APRIL 5, 1983
7:30 PM**

PRODUCT REVIEW

For those who want a wordprocessing program that uses the minimum in hardware; TYPWRITER by Extended Software may be the answer. The minimum requirements are TI-99/4A console, monitor (or tv), extended basic module and of course, for hard copy, a printer with RS232 interface. One limitation however, with this minimum configuration, is limited memory (if later you add the memory expansion directions are given for minor changes in the program). The program can hold and save approximately 6 screens or one full typewritten page. So for each document you can alternately add data, print, and save each page separately. The new version does have a chaining command that signals your cassette or disk drive to input the next page of text.

The following are the choices on the main menu:

- 1) Document Mode
- 2) Input Mode
- 3) Continue Mode
- 4) Save Document
- 5) Print Document
- 6) Leave program*
- 6) Catalog disk
- 7) Leave program

disk version includes:

The main functions within the program are:		
text centering	right justification	tab sets
margin sets	prompt set for input	edit(10 functions)
repeat text	additional copies	line feed
underlining	special characters	error handling

This program sells for \$32, which is a lot less than most word processing programs. It's fun!! It's functional!!

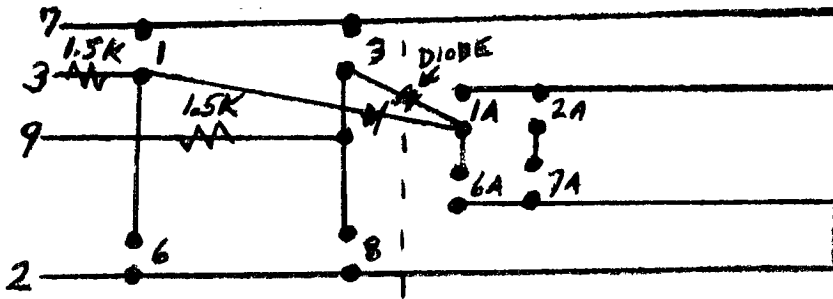
by Lynn West

JEWELS AND JUNK

BY JIM W.

As promised, here is the way to add 8 more sockets to the circuit of last month. Eight diodes are required (Radio Shack #276-16-20 50/\$.99). Sockets 5 and 10 cannot be expanded due to internal programming.

LAST MONTH : ADDED SOCKETS



SOCKET#

WIRE#

1A/6A

3/9

2A/7A

8/9

3A/8A

3/5

4A/9A

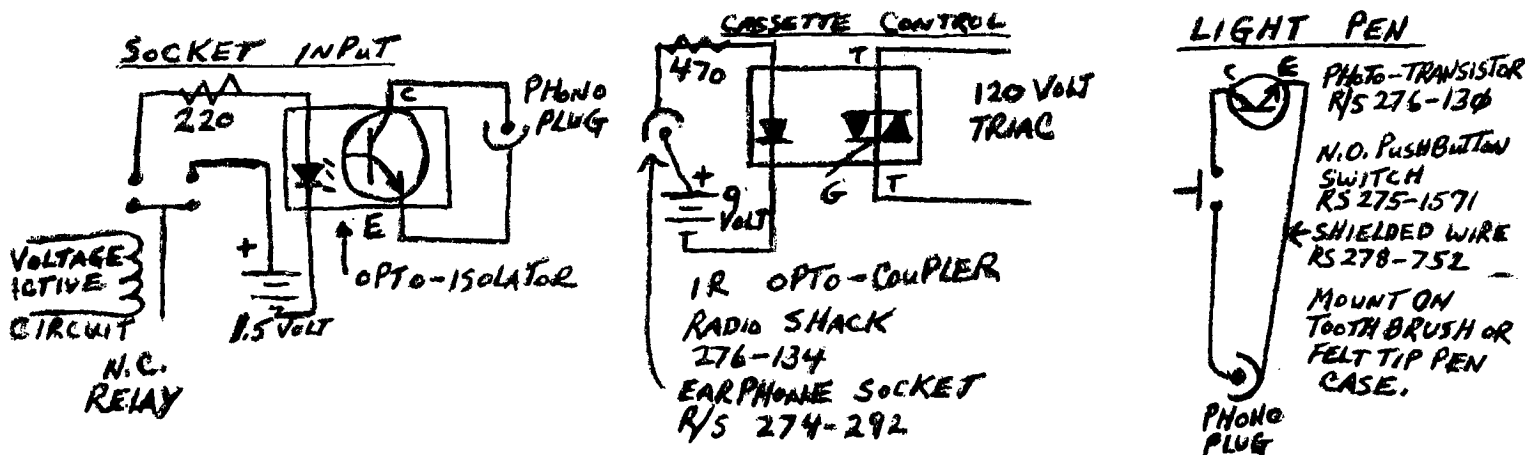
8/5

The black stripe on the diodes should be toward the new sockets.

Notice by numbering the sockets the same as last time but by adding an "A" we can use the same program to test the new sockets. This time, however, you get both an "X" and "Y" value. The additional sockets require the use of the IF X = "?"*Y="?" THEN - statement in your programs.

By rearranging the layout and using data entry keyswitches you can have an 18 key pad. Ten keys are used for the numbers 0-9 and the remaining keys are used for operator inputs(+,-,*,/, etc.). Don't forget an "ENTER" key. By testing X and Y we can set a string variable to the value of the key that was pressed. Concatenation (Page II-15) to a second string variable allows building a large number. Use "ENTER" to stop input to that number. Input the operator sign to another variable and build a second string variable. When "ENTER" is pressed this time test the operator variable and jump to a statement that uses the VAL(PageII-103) of the string variables to give the right answer.

Presto - a ten key pad just like the expensive machines.



A.K. MARKETING INTERNATIONAL
SAYS HELLO TO P.U.N.N. WITH OUR APRIL SPECIAL FOR

CLUB MEMBERS ONLY:
OKIDATA MICROLINE 80
DOT-MATRIX PRINTERS FOR \$385
(RETAILING AT \$499).

WE CARRY A WIDE VARIETY OF HARDWARE/PERIPHERALS
(NEC MONITORS; OKIDATA & EPSON PRINTERS), SOFTWARE,
& ACCESSORIES (DISKETTES, HEAD CLEANING KITS,
ETC.). FOR MORE INFORMATION, CALL 241-9171.

KNOCK, KNOCK ... WHO'S THERE?

ALPHAGISTICS!

We've got a unique opportunity for P.U.N.N. members. Get discounts on hardware, software, peripherals, and accessories! We offer helpful hints on how to start up, maintain and expand an income-producing business which takes advantage of the booming computer/software market. We offer knowledge, support, and an exciting approach. Get involved today by calling us at (503)246-3181.

COMPUTER MESSAGE CENTERS

The following are local access numbers for computer bulletin board services. Each is free and have a variety of uses. Leave a message for a friend, find a good deal on computer equipment, receive updated computer information and club news.

Atari.....245-9405
BWMS.....230-1041
Bits Bucket.....761-6345
PMS.....245-2536
CBBS.....284-5260 and 646-5510
Dre.City NW.....655-6009
VBBS.....206-696-0723
RCPM.....641-7276

(the above numbers have been obtained from various sources and may not always be available)
by Berry West

**WANTED DEAD OR ALIVE
NEWSLETTER ARTICLES!!**

All you would be writers please submit articles for our monthly newsletter. Articles need to be submitted by the 10th of each month. Please submit to:
Stan Stone
12208 NW Barnes RD #219
Portland, OR., 97229

COMMENTS

Effective March 1,1983 the dues are now \$15.00 per year.
All of you look at the code of numbers at the bottom of the mailing label and if this number is over a year old than your dues are now due.
Cards are on the way. By next meeting we hope to have them for all the members.

AMENDMENT PROPOSAL

One vote per membership. Members-only may vote or make proposals. Members-only may attend workshops. Subscription to the newsletter be at \$8.00 yr. For non-members (25% off cover price). A maximum of only two family members may attend any workshops due to the amount of space we have. This will be changed when larger space is found.
Submitted by Chris Gray

Ted Peterson
will print programs
for any member



INNOVATIVE ELECTRONICS AND COMPUTING

TI compatible cables now available from IEC directly to you for TI home computer.

<u>Stk.#</u>	<u>Description</u>	<u>Price</u>
1111	Dual Cassette	\$11.95
1112	Single Cassette	\$ 9.95
1121	Serial "Y"	\$24.95
1122	Serial "Y" TI modem*	\$34.95
1123	Serial "Y" non TI modem*	\$34.95
1131	Monitor	\$15.95
1154	Serial Printer	\$19.95
1155	Modem	\$19.95
1156	Parallel Printer	\$24.95
2112	RS232 Extension	\$19.95
2141	Atari Joystick Adapter	\$19.95

*Cable #1122 and 1123 are 6 ft. cables specially designed to eliminate extra costly modem and printer cables (no other cables are necessary).

All IEC cables carry a one year warranty. To order send check or money order to:
IEC, P.O. Box 11532, Denver, CO 80211
Enclose \$2.50 postage and handling for first item and \$1.00 for each additional.
Colorado residents add 6-1/2% Sales Tax.

Edmonton User's Group
P.O. Box 11983 Edmonton
Alberta, CN T5J 3
UG

P.O. BOX 15037
EAST PORTLAND STATION
PORTLAND, OR. 97215



Calendar of Events

NEXT MEETING APRIL 5, 1983

Future meetings

May 3, 1983
Jun 7, 1983
Jul 5, 1983
Aug 2, 1983
Sep 6, 1983
Oct 4, 1983
Nov 1, 1983
Dec 6, 1983

Future Workshops

May 14, 1983
Jun 11, 1983
Jul 9, 1983
Aug 13, 1983
Sep 10, 1983

Nov 12, 1983
Dec 10, 1983

All general meetings are held on the first Tuesday of each month, at the P.G.E. Bldg at 3700 SE 17th, at 7:PM for a 7:30 start

All workshops are held on the second Sat. of each month. These will start at 10:AM to 5:PM at the P.G.E. Bldg (Willamette Center), 121 SW Salmon in conference rooms A & B.