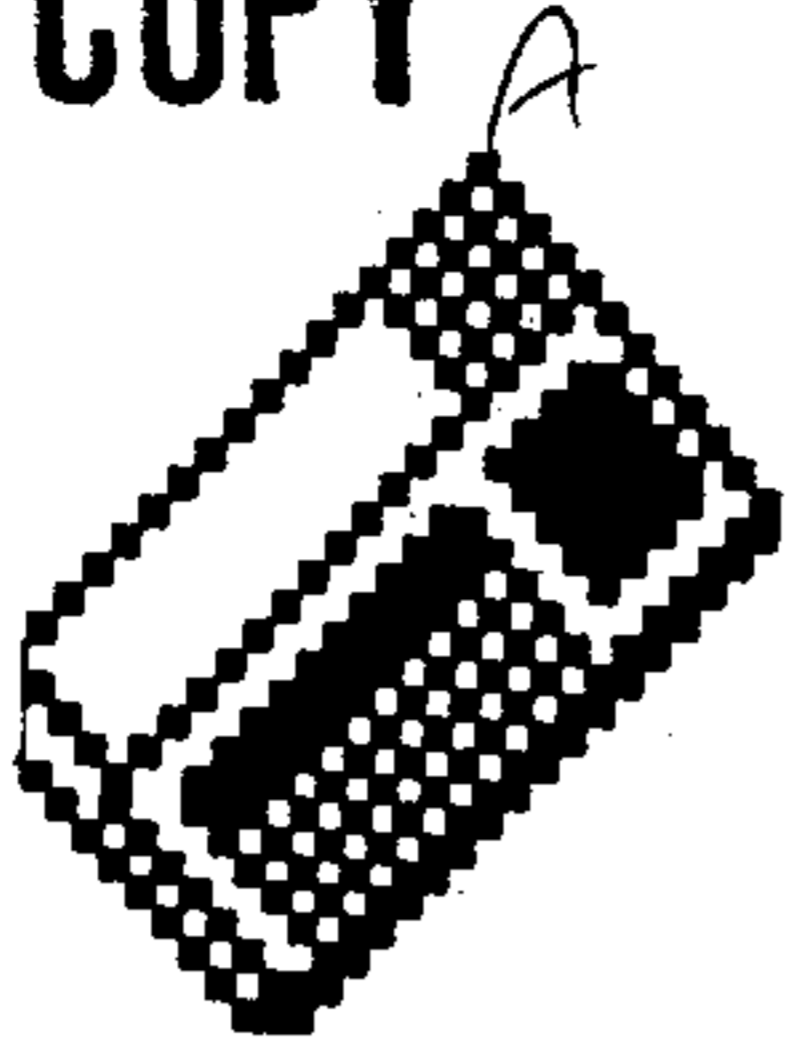


JUNE 1983

FILE COPY

PROP. of HUG  
SET "A"  
c/o R. Lumpkin  
Houston Texas  
713-469-5089



# HUG

HOUSTON USERS GROUP

FIRST SUNDAY OF EVERY MONTH

2PM

NEXT MEETING: SUNDAY,

#### PRESIDENT'S COMMENTS

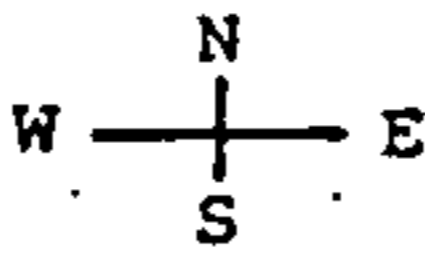
Well, June is almost here and we have had five meetings of our group already this year. Time is really passing fast. I hope that as the time goes along, we continue to make progress in offering the type of programs that are needed and wanted by our members. Again, I ask for your comments and suggestions to help us realize this goal.

As many of you know, we have received an offer that was very hard to refuse... and we didn't. St. John's School has made available to us their computer facilities for our meetings. They have had an active computer programming course being taught for quite some time and relatively recently have purchased a number of TI-99/4A's (more than 20 systems) to expand their computer training facilities. Tom Jay, one of our members and a member of the faculty at St. John's, has offered us the use of their equipment in an air conditioned meeting room. This should be a real help to us in our efforts to offer members as much as possible in learning and using the powerful and low cost computer that we are all enthusiastic about (I hope). Thank you very much St. John's and thanks to Tom Jay for his help in making this possible.

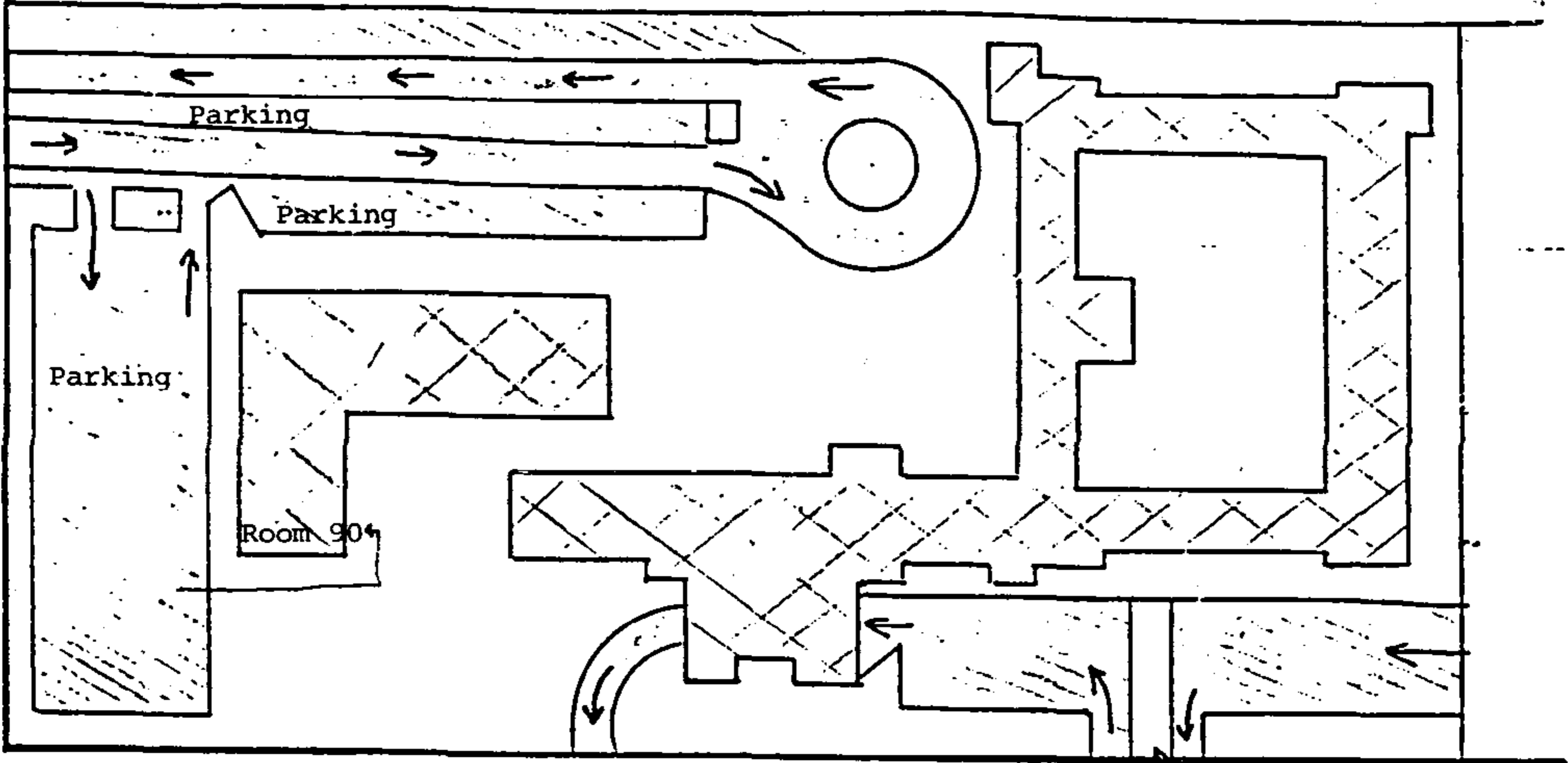
I also want to thank the Bechtel Corporation for the great meeting facilities that they have provided for us. Don Thorpe and Barton Wood have put in a lot of time getting everything set for our meetings. We may still have the need to occasionally use the Bechtel facilities and we want everyone involved in making them available to us to know just how appreciative we are.

There are rumors of exciting things about to happen concerning TI's home computers. Be at our next meeting on June 5 and get the first-hand information about just what is going on. See you there.

Wayne Wright



C  
L  
A  
R  
E  
M  
O  
N  
T  
  
L  
A  
N  
E



WESTHEIMER

(Tunnel)

B  
U  
F  
F  
A  
L  
O  
  
S  
P  
E  
E  
D  
W  
A  
Y

West Alabama

Richmond

SW Freeway



# DEFINING CHARACTERS

by Tom Dasenbrock

Characters are given a shape by the command `CALL CHAR(NUM,STRING)` where `NUM` is the number of the character to be defined and `STRING` is a special list of `HEXADECIMAL` numbers enclosed in quotes.

`HEXADECIMAL` (`HEX` for short) numbers are the numbers 0-9 which represent themselves and the letters A-F which represent 10-15.

`HEX` is a more efficient way of writing `BINARY` (which consists of only 1's and 0's) which is what the computer actually uses. 1 `HEX` is made up of 4 `BINARY` digits. Examples

HEX	BINARY	HEX	BINARY	HEX	BINARY
1	0001	2	0010	3	0011
4	0100	5	0101	6	0110
7	0111	8	1000	9	1001
A	1010	B	1011	C	1100
D	1101	E	1110	F	1111
		0	0000		

The `STRING` will consist of 16 hex characters which will tell the computer which dots will be the foreground character and which will be the background color. 1's will be the foreground and 0's the background

The character is made up of 8 rows of 8 dots. Each row will be represented by 2 `HEX` digits (which in turn represent 8 binary digits). Example:

BINARY VALUE	BINARY VALUE	HEX REPRESENTATION
0 0 0 0 : 0	0 0 0	0 0
0 0 1 1 : 1	1 0 0	3 C
0 1 0 0 : 0	0 1 0	4 2
0 1 0 0 : 0	0 1 0	4 2
0 1 0 0 : 0	0 1 0	4 2
0 1 0 0 : 0	0 1 0	4 2
0 0 1 1 : 1	1 0 0	3 C
0 0 0 0 : 0	0 0 0	0 0

This character will be a capital 'O' shape and the `STRING` would be represented by "003C424242423C00". If the `NUM` of the character was 70 the command would be `CALL CHAR(70,'003C424242423C00')`.

Try this short program to see.

```
10 CALL CLEAR
20 CALL CHAR(70,'003C424242423C00')
30 PRINT CHR$(70)
40 GOTO 30
```

You must use 'BREAK' to stop the program. When the program stops all the O's will go back to being F's which they were before they were redefined by the program.

MAY MINUTES

Our treasurer, Jane Rowland reported that as of May 1, our treasury held \$1001.00.

Jane McAshan announced that Steve Davis, Author of "Programs for the I.I. Home Computer" would be at Computer Age on June 4th, between 3 and 5 P.M. (The book is well worth the \$14.95 it costs. E0)

Also, the new book: "Smart Programming Guide for series" was reviewed. The May issue of 99'er contains the ordering information.

A new HUB Library listing was distributed to the attending membership. Those unable to attend should contact Ralph Arnold for copies.

As summer is upon us, the lack of airconditioning in our present meeting location became a more pressing problem. One of our members has arranged for our future meetings to be held at St. Johns School on Westheimer. Not only does the school have airconditioning but, the school's computer science room is equipped with 59/44's, which were also made available for our use. The facility will accommodate 70, which should cover our average meeting. A motion was taken and approved to move our meetings to St. Johns School starting with the June meeting. (See enclosed map. E0)

It was decided by the membership, that annual dues be prorated for members joining after June. New members joining between January and June will pay the \$10.00 annual dues plus the one time assessment of \$10.00. Those joining after June (July) will pay only \$5.00 plus the assessment. Don't forget the assessment entitles you to six free programs from the club library. (You furnish the tape or disk)

The meeting was divided into various groups of different interests, Basic, Logo, Extended Basic. These groups were of great help to all who attended them.

FROM THE EDITOR

At the May meeting an EXTENDED BASIC command module was misplaced. If you found it, please contact Jane McAshan.

While our June meeting is in progress Jane McAshan will be in Chicago attending the Summer Consumer Electronic Show. She plans to try and call us and let us know what T.I. has that we can't live without. I'm sure we are all going to be waiting to see if they introduce the new as we are hoping they will.

GIBBS LAWS OF RELIABILITY

- 1. Computers are unreliable, but humans are even more unreliable.
- 2. Any system that depends on human reliability is unreliable.

At the source of every error which is blamed on the computer you will find at least two human errors including the error of blaming it on the computer.

**Computer Age**

**PRESENTS**

**MOONBEAM SOFTWARE**

**FANTASTIC**

**ARCADE ACTION, CHALLENGE AND ADVENTURE**

**FOR YOUR HOME ENTERTAINMENT**

**CAVERN QUEST**

**MOONBEAM EXPRESS**

**\*\*\*\*\* SPECIAL OFFER \*\*\*\*\***  
**\*\*\*\*\* BUY 2 GET 1 FREE \*\*\*\*\***

**\*\*\*\*\* COMING SOON \*\*\*\*\***

**ANT EATER BY ROMOX**  
**ARTHROPOD BY BILL BIES**  
**TAKE A GAME HOME TODAY.**

160 Sharpstown Center  
Houston, Texas 77036  
(713) 270-1257