

Bayou 99 Users Group, P.O. Box 921, Lake Charles, La. 70602

# BAYOU BYTE



Price One Dollar

Distribution: 250 copies

## NEW MEETING PLACE !

\*\*\*\* SAME TIME ! SAME DATE ! \*\*\*\*

Beginning with the April 21th meeting, we will be meeting at a new location:

### HENERY HEIGHTS RECREATION CENTER

801 E. SCHOOL ST. (See map on back)

Along with the new meeting place will be a new meeting format. The schedule will be:

7:00 PM.....Call meeting to order and conduct old and new business.

7:40 PM.....Present Disk of Month and Fairware of Month

8:10 PM.....Present Program for meeting

9:00 PM.....Adjourn for refreshments and informal discussions. (This will become the time for any SIGS that will be established---NEXT STEP, BASIC, ASSEMBLY, etc.)

10:00 PM....Turn out the lights, lock the door, and go home!

Now after setting this schedule, I'm going to make an exception for this month's meeting because of the nature of the program!

RICHARD MITCHELL IS GOING TO DEMONSTRATE THE NEW TRITON TURBO XT !!! If the demo takes until 10:00 PM that will be OK as I'm sure everyone will be interested to see how the TI99/4A makes the TURBO connection! *If you have not been coming to the meetings, you'll not want to miss this one!*

The executive committee has been working to introduce some surprises in the meetings to help keep the members interested and on their toes. You'll not want to miss any future meetings. The "out of towners" will be in for a pleasant surprise also.

DON'T FORGET... NEW MEETING LOCATION! SAME DATE... 3rd TUESDAY OF THE MONTH. SAME TIME... 7:00 PM.

SEE YOU THERE!!

MONTHLY MEETING MINUTES  
by SONNY HOFFPAUR

A little talk with a few of the members who had gotten to the meeting a little early brought some interesting comments. One of these was from Barry York, he told the group that it was possible that he would be able to acquire some programs from the JOHNSON Space Center computer club. It will be possible to get some 40 plus disks of software from them.

Roger Hickerson said that he had called the Sulphur Library for a meeting room. We have an opportunity to move if we have too. Pete Still is leasing a building in Westlake in the near future and said we will be able to use this building also.

1. John Singleton opened the meeting at 7:18 P.M.
2. Pete Still told the club about the disk of the month; what he had been doing in the past and what he plans to do in the future. Most of the programs are in basic. This month's newsletter has the disk of the month that he has already gotten into the system.
3. Noel Moss said Henry Heights is available at no charge. Roger Hickerson suggested that we get the Henry Heights building for the next meeting. A motion was made by Noel Moss to go to Henry Heights, seconded by Sonny Hoffpaur. Motion was carried. The meeting date will still be the same. The Third Tuesday of each month.
4. John started a discussion on what would the membership like to have at the meetings. John talked about the out of town meeting and also a TI Faire. He also told us that some Dallas user groups are talking about having a TI Faire in Dallas.
5. Roger Hickerson told the club that we now have \$683.30 in the treasury. We also need the members to start checking out the library to see if any of the programs would be useful to them. These purchases will help the group tremendously.
6. Roger Hickerson suggested that we have some SIG meetings on "the next step". Everyone is ready for a next step in their computing. Bring your next step to the meeting and share. He also talked about the XT-turbo and the new Myarc computer.
7. Meeting adjourned at 9:00 P.M.

\*\*\*\*\* THE LIBRARY SOAPBOX \*\*\*\*\*  
By Pete Still

Don't quite know why, but it seems like I couldn't really get started on this month's soapbox without something interrupting me every time I sat down at the keyboard and started to type. Nothing malicious, nothing planned, but even if it was the middle of the night, something was just bound to come up. I think I'll move the computer into a closet with a lock on the inside of the door so I can get my columns done BEFORE the newsletter deadline. (I really would hate for our editor to either have a nervous breakdown or go to jail for strangling me.) (JUST A JOKE JOHN!!!!!!!!!!)

Have all of our members DIED out there or something?????? John, Myself, and various others go to a fair amount of trouble to try to put interesting things into the BAYOU BYTE, and we spend a considerable amount of time and energy doing so. Why is

it that we never seem to get ANY suggestions, questions, comments, etc. I am referring not only to our newsletter but to our group's affairs in general. We, as officers and committee chairmen, can only do so much on our own initiative. We NEED input from the members both local and out-of-town. (You out-of-towners SPEAK UP. It's YOUR group too.) I can't speak for the other officers and committee chairmen, but it really gets discouraging when you spend a considerable amount of time trying to improve things for the group and you don't even get one single comment (for or against) in return.

WAKE UP OUT THERE BEFORE IT'S TOO LATE! THE NAME OF THE GAME IS PARTICIPATION!

We WILL NOT have a new library catalog in time for this month's meeting as I have simply not had the time to get it done. I am fairly close to getting a preliminary catalog done but what with trying to run two businesses and take care of other matters there was not enough time to do the terrific amount of typing involved, let alone check all of the programs involved. It will be done sometime BEFORE the May meeting. The new catalog will be available two ways. You may request a catalog on disk which will cost you \$1.00, or you may request a hard copy catalog. (policy yet to be determined on hard copies) I will issue updates periodically for both varieties. Watch this column for further details and date of availability.

Enough ranting and raving. On with the show.....

If I remember correctly, I promised to do a review of Marty Kroll's "Library Catalog" Program this month so here it is.

The following is a sample of the main operations screen for the program:

```
A ADD DISK TO CATALOG
B DELETE DISK FROM CATALOG
C LIST DISK SUMMARY
D LIST ALL PROGRAMS
E SEARCH FOR AND LIST A DISK
F SEARCH FOR AND LIST A PROGRAM
G PRINT CATALOG DISK BY DISK
H PRINT DISK SUMMARY
I PRINT ALL PROGRAMS
J PRINT ALL PROGRAMS-NO PAGE DIVISION
K SEARCH FOR AND PRINT A DISK
L CHANGE PRINTING OPTIONS
M SORT AND SAVE DATA
N CHANGE FOREGROUND/BACKGROUND COLORS
O SELECT ANOTHER SET OF DATA FILES
P TERMINATE PROGRAM
```

YOUR CHOICE:

FILES IN USE: DISKDATA01 AND FILEDATA01

TOTAL DISKS= 51 TOTAL FILES= 879

Some notes about the program:

1. Catalogs up to 123 disks and 900 files
2. Saves data for later listings, additions, or deletions.
3. Reload data files without rebooting.
4. For single drive systems: No need to switch disks until all additions/deletions are made.
5. For multiple drive systems: Catalog from any drive.
6. When adding disks, catalog is listed on screen. You have choice to add it or not.
7. When adding disks, you are informed if diskname is already on file. If so you can: Replace old listing with new. or: Give new listing temporary name.
8. Catalogs these "funny sectored" disks: Those that appear not initialized. Those that appear empty because of sector #1.
9. Eliminates all non-printable characters from file and disk names and replaces them with a period. Since no legal filename uses it this eliminates sending unwanted control codes to your printer.
10. Print a standard format catalog of any disk on file including "funny sectored" disks.
11. Outputs the following to screen or printer: Summary of disks; Complete listing of files; Conventional catalog listing of any disk in the library; Complete catalog of all disks, disk by disk.
12. Choose one to three columns of printer output.

NOTE: TO USE THIS PROGRAM YOU MUST HAVE ONE OF THE FOLLOWING COMBINATIONS.

1. EDITOR/ASSEMBLER, MEMORY EXPANSION, DISK DRIVE.
2. MINI/MEMORY, DISK CONTROLLER, DISK DRIVE.
3. EXTENDED BASIC, FUNLWRITER(Freeware), MEMORY EXPANSION, DISK DRIVE.

There is very little that I can add to the above except that I consider this program FANTASTIC, and an absolute necessity for anyone who has over 10 disks. Many thanks to Marty Kroll for having the list of features I used already on disk so that they could be used in this review.

**FREWARE OF THE MONTH:**

This month's offering is "PRBASE" by William Warren. PRBASE is a very fast access data base which I will review in next month's column. I will be doing a demo of PRBASE at the meeting this month.

**APRIL DISK OF THE MONTH**

Following is a listing of this month's Disk of the Month (# 6) and a brief description of each program. These disks are available for \$4.00 each and may be obtained at the meetings or by sending a request to:

BAYOU 99 USERS GROUP  
ATTN: LIBRARIAN

99ERDOM/6 Free:005 Used:355

FILENAME	SIZE	TYPE	P	COMMENTS
01 2/TEST/ANS	8	DIS/VAR	N	Answers to test in FEB. BAYOU BYTE
02 @@__@	2	DIS/VAR	N	File for LOAD/1.
03 ARROW	4	PROGRAM	N	Color Sprite Demo in DEC. BAYOU BYTE by Danny Cox.
04 ARROW/MOD1	4	PROGRAM	N	Sprite Demo Modification 1.
05 ARROW/MOD2	4	PROGRAM	N	Sprite Demo Modification 2.
06 ARROWZAP	43	PROGRAM	N	Electronic pinball game.
07 BYTE-PGMS	5	PROGRAM	N	Load program created with Menu Builder.
08 CANT/HELP	13	PROGRAM	N	Music program plays Can't Help Falling In Love.
09 CHAINLINK	34	PROGRAM	N	Master Solitaire Game. A real Brain Teaser.
10 CHORES	6	PROGRAM	N	Chore assigner. End arguments forever.
11 FAMILYTREE	44	PROGRAM	N	Genealogy Program.
12 GRAPHSHEET	6	PROGRAM	N	Dec. Bayou Byte Program. PRINTS GRAPH PAPER.
13 INSANITY	6	PROGRAM	N	Dec. Bayou Byte Game.
14 LET/IT/BE	29	PROGRAM	N	Music. Plays the Beatles song Let It Be.
15 LOAD	28	PROGRAM	N	Same Load Pgm. as previous DOM
16 LOAD/1	31	PROGRAM	N	Same as load but modified by Barry Traver.
17 METRICS	17	PROGRAM	N	Educational Quiz on metrics.
18 OWHAT/XB	18	PROGRAM	N	Music. Plays O what a Beautiful Morning.
19 READ/FAST	32	PROGRAM	N	Educational Program to improve reading speed.
20 TINYCAMEL	4	PROGRAM	N	Feb. Bayou Byte Game.
21 TINYCAT	4	PROGRAM	N	Feb. Bayou Byte Cataloger.
22 W/WATER	11	PROGRAM	N	Game. Run the White Water Rapids.

Back issues of both DISK OF THE MONTH, and FREEWARE OF THE MONTH, are and will be available through the library.

Happy Computing.

#### TREASURER'S REPORT

By R. Hickerson

A Treasurer's Report will be published approximately four times each year coinciding with the calendar quarters. The following report is for the period January 1, 1987 to March 31, 1987

Balance January 1, 1987.....	\$502.36
Income	
Dues.....	132.00
Library.....	20.00
	-----
	152.00
Expense	
Disks .....	56.00
Advertising.....	20.00
Software.....	18.00
	-----
	94.00
Net Change	58.00
	=====
Balance March 31, 1987.....	\$620.36

\*\*\*\*\* DUES NOTICE \*\*\*\*\*

As a special reminder to our members whose memberships are about to expire, the following list has been prepared.

EARL JONES	3/1/87
CHARLES PETEE	4/1/87
CHARLES FOSTER	4/1/87
ED ROACH	4/1/87
GENE ADAMS	4/1/87
MARK HAMMON	4/1/87

Please mail your tax deductible dues to the Bayou 99 Users Group, Box 921, Lake Charles, LA 70602. Don't take a chance on missing a single issue of the BAYOU BYTE with all the news of current changes including the NEW Myarc computer and the Turbo Connection.

**IF...THEN...ELSE**  
By R. N. Hickerson

The IF...THEN...ELSE statement in TI Extended Basic is very useful in numerous ways. Proper use of this statement allows the computer to make decisions based on conditions the programmer has established. Using an absurd example, you can shut a door only if it is open. This translates, using our BASIC IF...THEN...ELSE statement to, IF the door is open THEN shut it ELSE do nothing.

The syntax for this statement is: IF(Condition1) THEN(Sequence1) ELSE(Sequence2). If (Condition1) is true then execution proceeds with the action in Sequence1. Sequences may be a line number or a statement, if a line number, a jump (GOTO) to the line number takes place, and if a statement, the statement is executed. If, however, our Condition1 is false, execution proceeds with Sequence2 following the ELSE part of the statement. In the following example:

```
200 IF A=10 THEN PRINT "A=10" ELSE 400
```

If the condition,  $A=10$ , is true,  $A=10$  will be displayed on the screen. If  $A$  is not equal to  $10$  the program sequence jumps to line  $400$ .

Logical operators can also be used. The above statement could be written:

```
200 IF NOT(A=10) THEN 400 ELSE PRINT "A=10"
```

The two statements are exactly equivalent in a program. The reason for this is easier to infer than it is to explain. Simply stated, IF checks the condition,  $A=10$ , and determines whether it is true or false. The logical operator is then invoked and when  $A=10$  is not true the sequence followed is that following the THEN statement.

Another example may serve to clarify and demonstrate one use of this form of our IF...THEN...ELSE statement. First, just to remind everyone, if the condition which follows the IF is not true and ELSE has been omitted, program execution continues with the next line number following the IF...THEN. This permits us to simulate a WHILE loop such as found in some other versions of BASIC. The purpose of a WHILE loop is to continue a set program sequence WHILE a condition remains true and to jump out of the loop as soon as the condition becomes false. A FOR...TO statement could also be used, but jumping out of a loop can cause unwanted results on occasion. Let's assume we need to know how many lineal feet of driveway we can pour with each 9 cubic yard load of concrete. We can then build our forms just large enough for one load at a time. The driveway is to be 8 inches thick and 10 feet wide. You can trust me if you don't want to work out the arithmetic.

The amount of concrete (AMT) equals the length (LF) times 10 divided by 54. The program can then be written as follows:

```
100 IF NOT(AMT<=9) THEN 140 ! IF AMT IS NOT LESS
                             ! THAN OR EQUAL TO 9
                             ! GOTO 120
110 LF=LF+1                   ! INCREASE THE VALUE
                             ! OF LF BY ONE EACH
                             ! TIME
120 AMT=LF*10/54              ! COMPUTE AMT FOR
                             ! EACH VALUE OF LF
130 GOTO 100                  ! CHECK VALUE OF AMT
140 PRINT "LENGTH=";LF-1     ! PROGRAM SEQUENCE
                             ! WHEN (AMT<=9) IS
                             ! NOT TRUE
```

The result tells us 48 feet will be all we can pour, so to be safe we will only form 48 feet today and finish it tomorrow. We can make a few stepping stones with the left over concrete for a path in the garden.

Pursuing this train of thought a little farther, we could have constructed a "REPEAT...UNTIL" loop to solve problems of this type. The previous example could have been solved with the

following sequence:

```
100 LF=LF+1           ! INCREMENT LF BY ONE
                       ! EACH TIME
110 AMT=LF*10/54      ! COMPUT
                       ! E AMT
120 IF NOT(AMT<=9) THEN 100 ! IF (AMT<=9) IS NOT
                       ! TRUE PASS TO NEXT
                       ! LINE
130 PRINT "LENGTH=";LF-1 ! SEQUENCE WHEN
                       ! CONDITION IS NOT TRUE
```

We can look at a few more ways to use IF...THEN...ELSE statements the next time and maybe start on the FOR...NEXT loops.

### SUPPORTERS OF T. I. HARDWARE AND SOFTWARE

This is just a partial list some of the major TI 99/4A suppliers (both TI and third party). For a "dead" computer, it's not bad! If I've over looked anyone, my appologies! Let me know and I'll add to my list. This is NOT an endorsement of these companies but just a list made for the convience of our user group members.

ASGARD SOFTWARE  
P.O. Box 10306  
Rockville, MD 20850  
(301) 345-2492

PILGRIM'S PRIDE  
P.O. Box 2  
Mathboro, PA 19040  
(215) 441-4262

DATABIOTICS INC.  
P.O. Box 1194  
Palos Verdes Estates,  
CA 90274

QUALITY 99 SOFTWARE  
1884 Columbia Rd. #1021  
Washington, DC 20009  
(202) 667-3574

DISK ONLY SOFTWARE  
P.O. Box 4170  
Rockville, MD 20850  
Touchtone order line:  
(800) 446-4462 + 897335 (at tone)  
Alternate order line:  
(301) 369-1339  
or for info only:  
(301) 340-7179

RAVE 99 CO.  
23 Florence Rd.  
Bloomfield, CT 06002  
(203) 242-4012

GREAT LAKE SOFTWARE  
804 E. Grand River Ave.  
Howell, MI 48843

RYTE DATA  
210 Mountain St.  
Haliburton, Ontario, CANADA  
KOM 1S0  
(705) 457-2774

MG (MILLER'S GRAPHICS)  
1475 W. Cypress Ave.  
San Dimas, CA 91773  
(714) 599-1431

TENEX COMPUTER EXPRESS  
P.O. Box 6578  
South Bend, IN 46860  
(800) 348-2778 -order line  
(219) 259-7053 -order status  
(219) 259-7051 -general info



TEX-COMP  
P.O. Box 33084  
Granada Hills, CA 91344  
(818) 368-8631

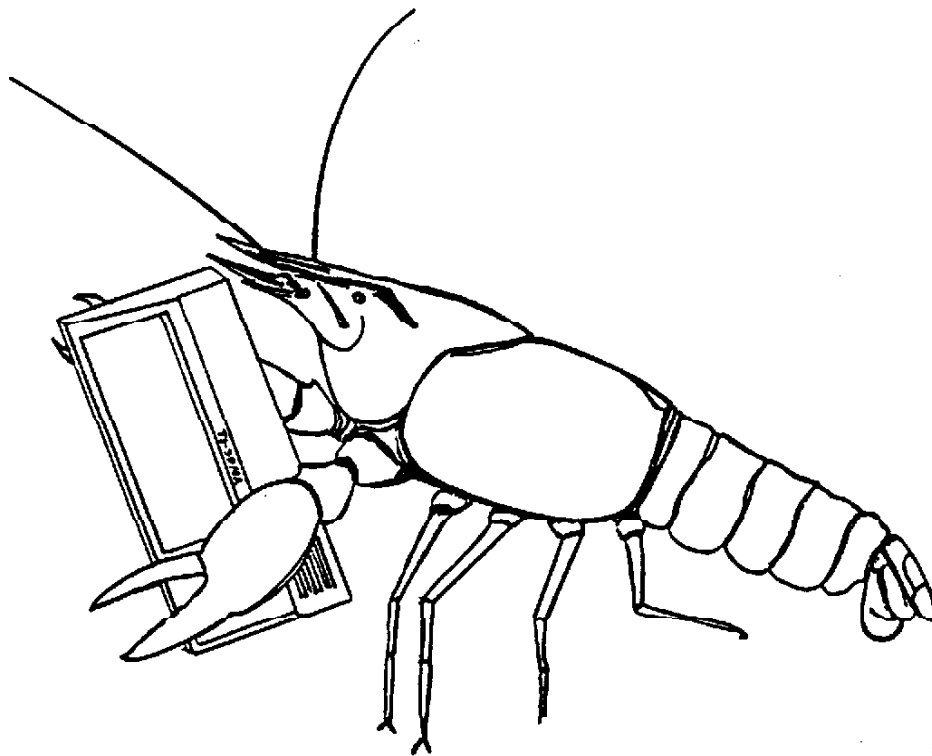
TRITON PRODUCTS CO.  
P.O. Box 8123  
San Francisco, CA 94128  
(800) 227-6900

#####

\*\*\*\*\* LAGNIAPPE \*\*\*\*\*

- \* MG (Miller's Graphics) has discontinued production of the GRAM Kracker. There was rumor of another company interested in taking up production but that seems to have fallen through. If you are like many others, you'll have to really do some hunting to find one to buy (new or used). Also, another MG product that has been discontinued by them is the excellent MG Explorer. But the good news is that it has been picked up by BYTEMASTER Computer Services (publisher of THE SMART PROGRAMER), 171 Mustang St., Sulphur, LA 70663. Explorer will remain in the \$25 price range, but unlike previous releases, Explorer will include documentation on diskette and no copy protection allowing users to load the program from floppy, RAM, or hard disk and to update the manual in accordance with personal needs. The program also has more loaders to allow running from different environments.
- \* MYARC ,241 Madisonville Rd., Basking Ridge, NJ 07920, is now offering an 80 track option for their Disk Controller Card. This, combined with the existing DSDD, would allow the user to format up to 2880 sectors (720K bytes) on one one diskette. You would need an 80 track drive and a quality diskette able to handle this higher density. They also offer a "Hard Disk" option for the same card. Either option is priced at about \$50.
- \* GEMINI 10X owners may now obtain the final instruction manual for their printer. The 10X was initially sold with a Xeroxed copy of the manual, stapled together. This new manual has slick covers with a spiral wire binding and is about 1/2" thick and very informative. The price is \$5 plus shipping. Write to STAR MICRONICS, INC., P.O. Box 1830, El Toro, CA 92630. Be sure to request the TI 99/4A addendum for specific use with our computer.
- \* Did you know most IBM PC periferial hardware works fine with your 99/4A? (i.e. disk drives, modems, printers, etc.)
- \* TEXAS INSTRUMENTS will no longer service the TI-59 or SR-52 programmable calculators due to the unavailability of some internal replacement parts. However, typical of the outstanding effort TI makes regarding consumer support; they are offering a "trade in" program. They will accept your old TI-59 or SR-52 plus an exchange fee for either their TI-74 (Basicalc) or TI-95 (Procalc) both "new" combination computer/calculators. For more information, write or call TI (P.O. Box 53, Lubbock, TX 79408, 1-800-842-2737).
- \* Also, TI is still trading 99/4A consoles for \$30.50 plus tax and shipping. Check for pricing on any other parts (RS232, 32K, etc.).

- \* RAVE 99 CO. has announced that they will phase out the model 99/84 keyboard by April 1987 and that the model 99/101 is no longer available. Now the good news. They now offer a model 99/105 in kit or fully assembled form. Some major features: 105 key keyboard with 24 function keys, single key entry of all TI-Writer, Multiplan, and E/A commands, dedicated numeric keypad with numeric operations, dedicated cursor control keys, enlarged <Return>, <Shift>, and <Control> keys, and user RESET and LOAD INTERRUPT from keyboard.
- \* CREATIVE FILING SYSTEM (Mark Beck, 166 Delaware Circle, Jacksonville, AR 72076) is now available in version 6.0. This is a database filing system that is extremely versatile and user friendly. It is a very powerful program that has many features other database programs don't provide. This is one of the best fairware programs available. To get a copy, send: 1) 1 disk mailer with return postage, 2) 3 SSSD or 2 DSDD disks and 3) a \$10 donation to Mark. The utilities are a fantastic program in addition to the main data base program. (Requires 32K, XB, and disk drive)
- \* MEI/Micro Center (1555 West Lane Ave., Columbus, OH 43221) has their 5 1/4" DSDD disks in lots of 100 for \$27.00 per 100 with a \$4.00 per 100 shipping charge. That's 31 cents each and includes sleeves and tabs! Act now as offer expires 4/30/87. (phone 1-800-634-3478)



## BAYOU 99 USERS GROUP

# "NOTICE"

## BAYOU 99 USERS GROUP

## DUES

### OFFICERS

PRESIDENT	John Singleton
VICE PRESIDENT	Richard Mitchell
SECRETARY	Sonny Hoffpauir
TREASURER	Roger Hickerson

### COMMITTEE CHAIRMAN

NEWSLETTER EDITOR	John Singleton
PROGRAM	Richard Mitchell
LIBRARY	Pete Still
EDUCATION	John Singleton
RECRUITING	Pete Still
& EQUIPT.	
TIBBS (SYSOP)	Roger Hickerson
TIBBS PHONE #	318-474-6144

\*\*\*\*\*

ARTICLES AND OTHER MATERIAL APPEARING IN THE BAYOU BYTE MAY BE COPIED BY OTHER USER GROUPS OFFERING RECIPROCAL PRIVILEGES IF BOTH BAYOU BYTE AND BYLINE CREDIT ARE GIVEN.

THE OPINIONS AND VIEWS EXPRESSED IN ARTICLES PUBLISHED ARE THOSE OF THE AUTHORS AND DO NOT NECESSARILY REFLECT THE VIEWS OF THE OFFICERS OR MEMBERS OF THE Bayou 99 Users Group OR THE EDITOR OF THE BAYOU BYTE.

MENTION OF A COMPANY OR PRODUCT IN THE BAYOU BYTE DOES NOT CONSTITUTE AN ENDORSEMENT BY EITHER THE Bayou 99 User Group OR THE BAYOU BYTE.

\*\*\*\*\*

### ADVERTISEMENT RATE SCHEDULE

FULL PAGE.....	\$14.00/ISSUE
HALF PAGE.....	8.00/ISSUE
QUARTER PAGE.....	6.00/ISSUE
EIGHTH PAGE.....	4.00/ISSUE
MINIMUM CHARGE....	3.00/ISSUE

MEMBERS are entitled to three lines free each month for non-commercial personal ads or notices.

\*\*\*\*\*

INDIVIDUAL OR FAMILY--- \$12.00/yr.  
CHECK YOUR MAILING LABEL TO SEE YOUR EXPIRATION DATE. IF YOU THINK THERE IS AN ERROR, NOTIFY ANY OFFICER.  
OUT OF STATE NEWSLETTER SUBSCRIPTIONS ARE \$6.00/yr. (INSTATE IS \$12.00/yr.)

### MEETING DATES

MEETINGS ARE HELD THE THIRD TUESDAY OF EACH MONTH AT 7:00 PM IN THE **HENRY HEIGHTS RECREATION CENTER**, 801 E. SCHOOL ST. (JUST WEST OF LOUISIANA AVE. BEHIND HENRY HEIGHTS ELEMENTARY SCHOOL, ON THE NORTH SIDE OF THE ROAD.) ALL VISITORS WELCOME!

```

*****
***** 1987 *****
* ***** *
* *          APRIL          * *
* * S  M  T  W  T  F  S  * *
* * -  -  -  -  -  -  -  * *
* *          1  2  3  4  * *
* * 5  6  7  8  9  10 11 * *
* * 12 13 14 15 16 17 18 * *
* * 19 20 21 22 23 24 25 * *
* * 26 27 28 29 30          * *
* *                               * *
* ***** *
* ***** *
* *          MAY          * *
* * S  M  T  W  T  F  S  * *
* * -  -  -  -  -  -  -  * *
* *                               1  2 * *
* * 3  4  5  6  7  8  9  * *
* * 10 11 12 13 14 15 16 * *
* * 17 18 19 20 21 22 23 * *
* * 24 25 26 27 28 29 30 * *
* * 31                               * *
* *                               * *
* ***** *
*****
    
```

**BAYOU 99 USERS GROUP**  
**P.O. BOX 921**  
**LAKE CHARLES, LA. 70602**