

306 3407

VOLUME NO. 2 ISSUE 8

SEPTEMBER 1984

Bayou 99 Users Group, P.O. Box 921, Lake Charles, La. 70602

# BAYOU BYTE



Price One Dollar

Distribution: 150 copies

## MEETING NOTICE

The September meeting of the Bayou 99 Users' Group will be at 7:00 P.M. September 13th at the Nelson Elementary School. Anyone interested in learning to use the capabilities of the 99/4A is invited.

## MEMBERSHIP RENEWALS

Your membership status is being indicated by markings on the mailing label of your copy of the Bayou Byte. A red check indicates one month remaining, a solid color orange indicates your membership has expired and the copy received will be the last copy mailed until your membership has been renewed. You may renew your membership by payment of the \$12.00 dues to any of the Group officers or by mail to:

Bayou 99 Users' Group  
P. O. Box 921  
Lake Charles, LA 70602

Please get your membership renewals in promptly to avoid any interruption in delivery of the Newsletter.

## MEETING MINUTES

The B99UG's August meeting was held in the Nelson School Library in air conditioned comfort. The planned software catalog was discussed in light of recent suits and threatened suits for software copyright violations. The Library Committee is in the process of reviewing the Library selections. Members may be requested to change program titles if identical to titles appearing in copyrighted publications.

Our thanks to Steve Manuel and Investment in Knowledge for donating an Imagic Microsurgeon (1) for a door prize. Steve also demonstrated Copy-Cat (2) by John Brown. Only four passes were necessary to copy a full disk.

Richard Mitchell discussed the features of his CorComp Disk Controller Card. Other topics were the use of modems for BBS and Information Network access.

Door prizes were won by Thomas Webb and William Gutekunst.

A tutorial on TI-Writer will be presented by Steve Manuel at our next meeting - September.

- (1) Trademark of Imagic, Inc.
- (2) Trademark of C & R Distributing

## PRESIDENT'S LETTER

A measure of how well a Users Group is meeting the needs of its membership is the number who renew their membership for the following year. As President, I am pleased to report very few of our members are failing to renew. Also, we are still gaining in number with new members who have joined our Group.

As we enter the second year of our existence, our purpose continues to respond to the needs and wishes of our members. With the number of third-party products for the TI Home Computer increasing, keeping up-to-date with these products becomes more difficult and rewarding. Where once we need only look to Texas Instruments for accessories, peripherals and software, we now have Ultracom, Multicom, Mikel, CorComp, and Myarc peripherals and Imagic, Atarisoft, Sierra-On-Line, Parker Bros., and Tigervision software to name a few. Add to this list, FORTH Programming Language, Assembly Language De-Debugger, BASIC Compilers and Printers, Modems, DSDD Disk Drives and Controllers and you can now believe the 99/4A is indeed alive, well and gaining strength.

We are privileged to have our 99/4A computers with the versatility of applications matched by only a few of the biggest names (and price) computers on the market today. As with any product of technology it will become obsolete in terms of comparative capability, but it will never lose any of its present capabilities and can be expected to add a few more before we replace it with our "next" home computer.

Your Users Group's officers and your fellow members are committed to continue to explore new ways home computers can serve, educate, and entertain and to communicate the results. However, we can only be sure to cover your areas of interest if you let us know where they lie.

## PROGRAM POINTERS

A number of BASIC subroutines have appeared in various newsletters and magazines to perform the DISPLAY AT available in Extended BASIC. One of these prints your message as HCHAR's one character at a time starting with the screen column number on the row number designated in your program. This does perform a DISPLAY AT function, but it is also slow. This routine has been printed in a previous issue of the BAYOU BYTE.

There are other ways to have a message appear on the screen without the message scrolling up from the bottom of the screen. Two methods are shown below which make the message appear on the screen at a position you select. Both methods conceal the scrolling action until the message reaches the position selected.

The quickest of the two alternatives changes the screen color to the color of the printed character which in BASIC is black (color number 2), then changing the screen color back to the BASIC light green (color number 4) screen.

```
100 CALL CLEAR
110 CALL SCREEN(2)
120 PRINT "      MESSAGE" :::::::::::
130 CALL SCREEN(4)
140 GOTO 140
```

In the above routine MESSAGE will scroll up an additional 9 lines (count the colons) in black letters on a black background and the background will change back after the message is in position. The number of spaces between the quotation mark and MESSAGE determines the horizontal positioning.

Another method is to change the color of the characters to the screen color. For the light green BASIC screen:

```
100 CALL CLEAR
110 C=4
120 GOSUB 1000
130 PRINT "      MESSAGE":::::::::
140 C=2
150 GOSUB 1000
990 STOP
1000 FOR S=1 to 8
1010 CALL COLOR (S,C,1)
1020 NEXT S
1030 RETURN
```

When your program contains a large number of numerics such as you would have in data statements, an easy way to check for I's in place of 1's or O's in place of 0's, the following lines should be entered as the very first lines in your program:

```
1. For J=3 to 6
2. CALL COLOR(J,16,1)
3. NEXT J
4. GOTO 4
```

List the program lines you wish to check. Interrupt listing (FCTN4), then enter RUN. The normal screen colors are green (BASIC) or cyan (XB) with black letters. When the program listed is run, a program execution stops at the infinite loop in step 4 and all numbers on the screen change in color from black to white. You can quickly detect any I's or O's by looking for black characters where the white numbers should be.

Don't forget to erase lines 1 through 4 after editing is complete.

#### LIBRARY PROGRAMS

A partial listing of Library Programs has been included this month. Programs are included under the appropriate subject headings. Programs listed under special programs include programs purchased by the Group at discount prices. These are all original purchase modules, tapes or disks (no pirated material), so supplies are limited and some may be out of stock. Also, special utility programs received from TI in recent months are included, such as TI FORTH, Super Bug, etc.

Take advantage of the low, low prices of the Library's programs. They also can supply tapes, disks, printer paper and other items at significant savings to members.

## PRODUCT REVIEW

Super Sketch gives one the ability to draw pictures, designs, maps or any other graphics on the computer's screen. This Personal Peripherals, Inc. product consists of a graphic tablet wired to a command module and the user can begin creating his own graphics immediately as no programming is required. Your graphic designs, drawings, maps, etc. can be saved on cassette tape or disk for viewing again at any time.

The graphics tablet has a clip board surface, clamps to hold your drawing paper, a control box and control arm. A pencil or other drawing implement is inserted through the control arm and the pencil is used to draw or trace your graphic creations, and the movement of the pencil is reproduced exactly on your screen.

The control box on the graphic tablet includes a Menu button to select draw, erase, fill, show, swap (change colors) - your choice of 15 colors and more including Save and Load. Use of Super Sketch was no problem with only a preliminary glance at the instruction manual. The manual is very well written and easily understood.

Super Sketch will provide many hours of enjoyment in the exercise of your artistic talents and creativity. The complete system has a suggested retail price of \$60.00.

## AGNIAPPE

- \* King of the Castle is available from the Library. This is a very good "invaders" game with 8 levels of difficulty. Requires MiniMemory for cassette version and 32K Memory Expansion and either Ed/Assembler or XBASIC for disk.
- \* IBM has reduced the price of their PC"Jr" to under \$1,000 and will be offering a new keyboard option to the present chicklet keys.
- \* Dow Gazelle 4 Flight Simulator and other products have been offered to User Groups at discounted prices when an order totals \$100 or more.
- \* The Library has a few Editor/Assemblers in stock. These may become as scarce as the XBASIC module. The only confirmed source of XBASIC cartridges presently is Triton.
- \* The TI-Writer will be demonstrated during our September meeting. The demonstration will be conducted as a tutorial for those who have or plan to acquire this excellent word processor package.
- \* Plans have been made to demonstrate Super Sketch which reproduces the movement of a stylus on a peripheral scratch pad on the computer's screen. The user will be able to combine different colors and then save the screen to tape or disk. The screen can also be dumped to a printer.
- \* A number of our members are now equipped with modems and the Library still intends to provide program transfers by modem. In the interim, by prior arrangement, the service can be obtained at 318/477-3687 or 318/433-9604.

- \* Centering text on the screen can be performed simply. To print a string called MSG\$ centered on your screen include the following statement:

```
100 PRINT TAB((28-LEN(MSG$))/2);MSG$
```

PRINTER'S - Part 3

R.N. Hickerson

As we continue expanding the program started to show some of the techniques used to format the printer output, our purchase order form is taking shape. However, the techniques are equally applicable to form letters, invoices, advertising copy, statements or any other repetitive requirement. If a single copy were required, we would have been much better served by a Word Processing program such as TI-Writer.

In previous issues we located the printing at selected positions on our form using TAB statements, varied column positions for 80 column wide and 132 column wide printing as well as adding spaces to keyboard input to fill space and start the next printed character at a predetermined location. Vertical line spacing was also changed to provide underlining and to format information blocks.

The program continuation this month starts at Line 1240.

- Line 1240: W is used to assign line spacing in 1/72nd inch increments.
- Line 1250: Enters the subroutine that uses "A" or CHR\$(65) and CHR\$(W) to control the spacing from a line feed.
- Line 1260: WP is used to assign the column width.
- Line 1270: Accuses the subroutine for page width using the "Q" or CHR\$(81). Either would provide the same result.
- Line 1280: Resets the CHR\$(9) or T\$, TAB positions for the horizontal columns.
- Line 1290: Switches back to compressed (condensed in some manuals) print size.
- Line 1300: The first of the program lines for printing the information from inputs in Lines 1180 through 1230.
- Line 1330: The CX\$ on this line cancels compressed print size.
- Line 1340: Starts change to 80 column wide page.
- Line 1470: Change back to regular line spacing.
- Line 1490: Print headings for main body of Purchase Order.
- Line 1500: Print second line of heading. Location of heading print is obtained by the number of spaces and characters used.
- Line 1510: Change line spacing again for underscoring. With the TI-Printer careful spacing to fill out the line to the last column would allow an automatic underscore, but changing line spacing is more reliable.
- Line 1540: Start setting everything back to normal. WP=page width, W=line spacing and CX\$ turns off compressed print.
- Line 1600: Dimensions of an array for description text if the text is longer than the space allotted in the line.
- Line 1610: FOR...NEXT loop for purchase order quantities, units, descriptions, costs, etc. input.
- Line 1630: A, is the maximum length for the entry requested.
- Line 1640: J will print item number successively for each item on the purchase order.

```

1240 W=3
1250 GOSUB 2160
1260 WP=132
1270 GOSUB 2220
1280 GOSUB 2250
1290 PRINT #1:CS
1300 PRINT #1:CR$;T$;"I";T$;"I";T$;"I";T$;"I";T$;"I";T$;"I";
CR$
1310 PRINT #1:T$;"I";" REG.NO. ";T$;"I";"DATE REQ'D. ";T$;"I";
;" TERMS ";T$;"I";"
SHIP VIA ";T$;"I";"CHARGE NO. ";T$;"I";" P.O. DATE";CR$
1320 PRINT #1:T$;"I";T$;"I";T$;"I";T$;"I";T$;"I";T$;"I";CR$
1330 PRINT #1:T$;"I";T$;"I";T$;"I";T$;"I";T$;"I";T$;"I";CR$;
CX$
1340 WP=80
1350 GOSUB 2220
1360 GOSUB 2190
1370 PRINT #1:T$;L1$;T$;L2$;T$;L3$;T$;L4$;T$;L5$;T$;L6$;CR$
1380 WP=132
1390 GOSUB 2220
1400 GOSUB 2250
1410 PRINT #1:CS;T$;"I";T$;"I";T$;"I";T$;"I";T$;"I";T$;"I";C
R$;CX$
1420 SS$="-----"
1430 PRINT #1:S$;CR$
1440 WP=80
1450 GOSUB 2220
1460 GOSUB 2190
1470 W=12
1480 GOSUB 2160
1490 PRINT #1:" ITEM ";;"I";" QUANT. ";;"I";" UNITS ";;"I";T$;"
DESCRIPTION
";T$;"I";" UNIT ";;"I";"TOTAL ";CR$

```

```

1500 PRINT #1:" NO. ";;"I";" ";;"I";" ";;"I";T$;"
";T$;"I";" COST ";;"I";" COST "
1510 W=2
1520 GOSUB 2160
1530 PRINT #1:SS$;SS$;CR$
1540 WP=80
1550 W=12
1560 GOSUB 2160
1570 GOSUB 2220
1580 GOSUB 2190
1590 PRINT #1:CX$
1600 DIM DD$(20)
1610 FOR J=1 TO 15
1620 CALL CLEAR
1630 A=5
1640 PRINT "ITEM NO. ";J
2150 REM SET LINE FEEDS
2160 PRINT #1:X$;"A";CHR$(W);CR$
2170 RETURN
2180 REM SET TABS FOR 80 COL
2190 PRINT #1:X$;"D";CHR$(5);CHR$(15);CHR$(25);CHR$(35);CHR$(
51);CHR$(63);CHR$(7
0);CHR$(78);CHR$(0)
2200 RETURN
2210 REM SET PAGE WIDTH
2220 PRINT #1:X$;"Q";CHR$(WP)
2230 RETURN
2240 REM SET TABS FOR 132 COL PAGE
2250 PRINT #1:X$;"D";CHR$(5);CHR$(23);CHR$(40);CHR$(64);CHR$(
85);CHR$(105);CHR$(
123);CHR$(0)
2260 RETURN

```

-XXXXXXXXXXXXXXXXXX-

NOTICE

Members are urged to patronize the firms whose advertisements appear in our Newsletter. All ads published have been paid by cash or services.

ADVERTISEMENT RATES

FULL PAGE.....\$12.00  
HALF PAGE..... 8.00  
QUARTER PAGE..... 6.00  
EIGHTH PAGE..... 4.00

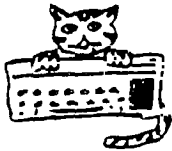
OFFICERS

Roger Hickerson - President  
Richard Mitchell - Vice-President  
Sonny Hoffpauir - Secretary  
Bob Nordan, Jr.- Treasurer

COMMITTEE CHAIRMEN

Tom Ahrens - Program  
Steve Manuel - Education  
Bob Nordan, Jr. - Recruiting  
Tim Hill - Equipment  
Ted Baehr - Library

## TIPS FROM THE TIGERCUB #9



### \*\*\*\*\* TIGERCUB SOFTWARE \*\*\*\*\*

156 COLLINGWOOD AVE.  
COLUMBUS, OHIO 43213  
(614) 235-3545

130 DIFFERENT PROGRAMS ON CASSETTE OR DISK, ONLY \$3.00 EACH!! GAMES, EDUCATIONAL, PROGRAMMER'S AIDS, ETC., ETC. NOT PUBLIC DOMAIN, NOT TRANSLATIONS. NOT PIRATED, NOT THE BRIEF ROUTINES OR JUNK YOU MAY HAVE RECEIVED ON SOME BARGAIN OFFERS - THESE ARE ABSOLUTELY ORIGINAL PROGRAMS OF GOOD QUALITY UTILIZING THE FULL GRAPHICS, COLOR AND SOUND CAPABILITIES OF THE TI-99/4A.

CATALOG \$1.00, REFUNDED ON YOUR FIRST ORDER.

THESE TIPS ARE CIRCULATED TO NON-PROFIT USER'S GROUPS FOR PROMOTIONAL PURPOSES, AND MAY BE REPRINTED WITH CREDIT TO TIGERCUB SOFTWARE.

No, I'M SORRY, THE TIPS ARE NOT AVAILABLE BY SUBSCRIPTION. I COULDN'T JUSTIFY CHARGING ENOUGH TO BREAK EVEN, AND I'M ALREADY LOSING ENOUGH MONEY TRYING TO SELL SOFTWARE! MAYBE I'LL PUT THEM ALL IN A BOOK ONE OF THESE DAYS.

A WORD OF ADVICE TO AMATEUR PROGRAMMERS WHO ARE DREAMING OF SELLING THEIR PROGRAMS - FORGET IT! I HAVE SPENT OVER 3000 HOURS IN THE LAST TWO YEARS WRITING AND TRYING TO SELL PROGRAMS, AND I HAVEN'T CLEARED A DOLLAR AN HOUR FOR MY EFFORTS! FOLKS JUST AREN'T BUYING!

LAST MONTH'S CHALLENGE WAS TO WRITE A PROGRAM IN TWO LINES OF BASIC, OR ONE LINE OF EXTENDED BASIC, TO COMPOSE AND PLAY RANDOM MUSIC IN 2-PART HARMONY IN THE KEY OF C. I DIDN'T HEAR FROM ANYONE ELSE, SO HERE'S MY SOLUTION -

```
100 REM - TIGERCUB 1-LINE MUSIC COMPOSER
110 CALL SOUND(-999, VAL( SEGS
("26226229433034939244049452
3587659698784", INT(12*RND+1)
*3-2, 3)), 0, VAL( SEGS("1311751
96", INT(3*RND+1)*3-2, 3)), 5)
120 GOTO 100
```

HERE'S A TIP FOR THOSE WHO HAVE MY TIGERCUB KEYBOARD ORGAN PROGRAM - TRY HOLDING DOWN THE SPACE BAR WHILE YOU PLAY ON THE KEYS. IN MOST OF THE VOICES, THE KEY RESPONSE WILL BE SO GREATLY IMPROVED THAT YOU CAN REALLY MAKE MUSIC!

AND ANOTHER CHALLENGE - CAN YOU WRITE A ONE-LINE PROGRAM IN EXTENDED BASIC WHICH WILL TAKE ONLY 70 SECONDS TO SCRAMBLE THE NUMBERS FROM 1 TO 255 INTO A COMPLETELY RANDOM SEQUENCE WITHOUT DUPLICATION?

WHO NEEDS LINE NUMBERS, ANYWAY? TRY KEYING THIS IN - (IN EXTENDED BASIC)

```
DIM S(36):: F=262 :: FOR N=1
TO 36 :: S(N)=F*1.059463094
^N :: NEXT N (ENTER)
FOR J=1 TO 10000 :: CALL SOUND(-99, S(INT(35*RND+1)), 0)::
NEXT J (ENTER)
```

HERE'S ANOTHER ONE - KEY THIS IN TO YOUR FRIEND'S COMPUTER WHILE HE IS GETTING YOU A BEER -

```
M$="00182430425A667E" (ENTER)
FOR C=128 TO 143 :: FOR L=1
TO 6 :: C$=C$&SEGS(M$, INT(8*
RND+1)*2-1, 2):: NEXT L :: CA
LL CHAR(C, "00"&C$):: C$="" :
: NEXT C :: CALL CLEAR
```

NOW, WHEN HE GETS BACK WITH THE BEER, REST YOUR LEFT PINKIE ON THE CTRL KEY WHILE YOU TYPE IN ANY OF THE LETTERS A THROUGH O, AND SHOW HIM THAT HIS COMPUTER HAS A BUILT-IN MONGOLIAN ALPHABET!

ONE MORE -

```
FOR CH=65 TO 79 :: CALL CHAR
PAT(CH, CH$):: FOR J=1 TO 16
STEP 2 :: X$=SEGS(CH$, J, 2)&X
$ :: NEXT J :: CALL CHAR(CH+
64, X$):: X$="" :: NEXT CH (ENTER)
CALL CLEAR (ENTER)
```

AGAIN, HOLD DOWN THE CTRL KEY WHILE YOU TYPE LETTERS BETWEEN A AND O. YOU CAN ALSO CHANGE THAT TO READ FOR CH=33 TO 90 AND CALL CHAR(CH, X\$), OMIT THE CALL CLEAR, AND WATCH THE FUN ON THE SCREEN.

IF YOU ARE PROGRAMMING FOR SPEED, DON'T USE DEF! PUT A STOPWATCH ON THIS ROUTINE AND SEE WHY -

```
100 DIM N(100) 160 FOR J=1 TO 100
110 FOR J=1 TO 100 170 N(J)=RD
120 N(J)=RND*10 180 NEXT J
130 NEXT J
140 INPUT DUMMYS
150 DEF RD=RND*10
```

HERE'S A ONE-LINE GOSUB FOR YOUR BUSINESS PROGRAMS, TO GIVE YOU THE NUMBER OF DAYS (D) IN ANY MONTH (M) OF THE YEAR (Y) INCLUDING THE EXTRA DAY IN FEBRUARY OF LEAP YEAR -

```
100 D=VAL(SEGS$("312831303130
313130313031",M*2-1,2))+(ABS
(M=2)*ABS(Y/4=INT(Y/4)))
```

IF YOU ACCIDENTALLY HIT A LETTER KEY IN RESPONSE TO AN INPUT N REQUEST FOR A NUMERIC VARIABLE VALUE, YOU GET A NASTY BUMP AND A SEVERE REPRIMAND - WARNING INPUT ERROR IN .....

THIS IS ANNOYING TO A USER, DISCONCERTING TO A NON-USER, AND EVEN FRIGHTENING TO A CHILD.

IF YOUR PROGRAM INPUT N\$, THE COMPUTER WILL ACCEPT ANYTHING AS THE VALUE OF A STRING VARIABLE, AND THE VAL FUNCTION WILL CHANGE A STRING OF NUMERIC DIGITS TO A NUMERIC VALUE - BUT IF THE STRING CONTAINS ANYTHING NON-NUMERIC, THE PROGRAM WILL CRASH - WHICH IS EVEN MORE ANNOYING, DISCONCERTING, AND/OR FRIGHTENING! THE SOLUTION? THE TIGERCUB PRESENTS -

```
100 REM - THE TIGERCUB POLIT
E COMPUTER!
110 INPUT "TYPE A NUMBER, PL
EASE ":N$
120 FOR J=1 TO LEN(N$)
130 IF POS("1234567890",SEGS
(N$,J,1),1)<>0 THEN 160
140 PRINT "THAT IS NOT A NUM
BER"
150 GOTO 110
160 NEXT J
170 N=VAL(N$)
```

IF YOU WANT TO ACCEPT DECIMALS AND NEGATIVE NUMBERS, CHANGE THE STRING IN LINE 130 TO "1234567890.-"

DO YOU LIKE TO WORK THOSE LETTER-SUBSTITUTION PUZZLES IN THE NEWSPAPERS AND PUZZLE BOOKS? WHY NOT LET YOUR COMPUTER MAKE THEM FOR YOU? JUST GET ANYONE TO TYPE IN A MESSAGE TO BE ENCODED.

```
100 REM - TIGERCUB CRYPTOCOD
ER BY JIM PETERSON
110 CALL CLEAR
120 T$="THIS PROGRAM WILL CR
EATE A CRYPTOGRAM BY SUBSTI
TUTING ONE LETTER FOR ANOTH
ER."
130 GOSUB 450
140 DIM A$(26,2)
150 M$="ABCDEFGHIJKLMNQRST
UVWXYZ"
```

```
160 FOR T=26 TO 1 STEP -1
170 A$(T,1)=CHR$(T+64)
180 RANDOMIZE
190 X=INT(T*RND+1)
200 A$(T,2)=SEGS$(M$,X,1)
210 IF A$(1,2)="A" THEN 150
220 IF A$(T,2)=A$(T,1) THEN 1
90
230 M$=SEGS$(M$,1,X-1)&SEGS(M
$,X+1,LEN(M$))
240 NEXT T
250 FOR J=1 TO LEN(T$)
260 D=ASC(SEGS$(T$,J,1))-64
270 IF (D<1)+(D>26) THEN 300
280 C$=C$&A$(D,2)
290 GOTO 310
300 C$=C$&SEGS$(T$,J,1)
310 NEXT J
320 T$=C$
330 C$=NUL$
340 GOSUB 450
350 IF FL=0 THEN 370
360 GOTO 360
370 FL=1
380 FOR D=1 TO 500
390 NEXT D
400 CALL CLEAR
410 PRINT "TYPE YOUR MESSAGE
- OF NOT": "MORE THAN 4 LINES.
USE EXTRA": "SPACES TO AVOID
- BREAKING A": "WORD AT THE EN
D OF A LINE.": " THEN ENTER"
420 INPUT " (28 BLANK SPACES)
":T$
430 CALL CLEAR
440 GOTO 150
450 R=5
460 C=3
470 FOR J=1 TO LEN(T$)
480 CALL HCHAR(R,C,ASC(SEGS(
T$,J,1)))
490 C=C+1
500 IF C<31 THEN 530
510 C=3
520 R=R+1
530 NEXT J
540 RETURN
```

ALMOST OUT OF MEMORY, 80

HAPPY HACKIN'

JIM PETERSON



## Super 99 Monthly

Explore the exciting capabilities of the TI-99/4A with us. Here are some of the topics covered in our September issue:

### Super 99 Disk Loader

A full program listing for quickly selecting any one of up to 97 programs on a diskette from a numbered catalog. The program can be easily tailored to your own needs. Special preselection utilities enhance program enjoyment. A must for disk users!

### Program Structuring in BASIC and Extended BASIC

Learn to write programs that can be read months later! Discover how easy it is to write efficient program code.

### So You Say You Can't Draw Graphics...

A simple tip on creating screen images.

### Cursor Pizzazz

Do away with your dull black cursor.

### Instant Screen Formatting

Put backgrounds and more on the screen in a flash even in console BASIC!

### Introduction to TI FORTH

This is a useful article for the FORTH beginner. Get in on this exciting programming language.

### Bit-mapped Drawing in FORTH

For those of you who have always wanted a simple way to get into drawing, bit-mapped mode, and computer-assisted design on the TI-99/4A, this is the article you have been waiting for!

### Horse Evaluator Using Multiplan

Multiplan beginners take note! This article gives step-by-step instructions for building a Multiplan spreadsheet. The model adjusts thoroughbred speed ratings for distance (not a wagering system).

### Using ERASE ALL in Extended BASIC

Tells specifically why you should be using ERASE ALL.

### DISPLAY AT in Console BASIC

Are you tired of having tired eyes? Watching lines scroll up from the bottom of the screen is a sure way to get eye fatigue. Learn to place a sentence anywhere on the screen!

### Using the TI-Writer Transliterate Command

Put your printer to work for you! Transliterate is one of the most important points to learn to do serious word processing on the TI-99/4A.

### Playing Tombstone City: 21st Century

Helpful hints on playing this fast-paced arcade-style game.

### Beginning BASIC: RESEQUENCE

Beginning programmers need to understand how to use RESEQUENCE to speed up program entry.

Plus, we cover the latest news that may be of interest to you!

In October, we'll have a special education issue, including an educational game for pre-schoolers in console BASIC! There will be plenty of programs and articles for readers interested in topics other than education, too! And, new subscribers will receive our September issue while back issues last!

Our subscription rate is only \$12.00 per year. Send your check today to:

Bytemaster Computer Services  
171 Mustang Street  
Sulphur, LA 70663

Notes from the Vice-Prez  
by Richard Mitchell, Editor of Super 99 Monthly

After running into several problems, I finally have my CorComp 9900 Disk Controller Card installed and working properly. First, I found out that my CorComp RS-232 would need a factory upgrade. So, I sent it in and managed to borrow a TI card. Then the Controller gave problems with double-density. So, my dealer (our own Steve Manuel) swapped it out for a new one. Now that it is finally working, it is a real pleasure to use. Several new statements are available in both console and Extended BASIC. I'm very impressed with the statements that move memory around. The memory moving statements allow some new options. For instance, both the VDP and 32 K Memory Card are accessible from console BASIC! The same statements also allow displaying screens at the unbelievable rate of 40 screens per second! Also, the Disk Manager (on diskette) is more efficient than the TI Disk Manager, using mostly single keystroke commands and a nifty single operation file utility for copy/delete/rename/change protection.

\*\*\*\*\*

Leo Brodie, the well-known author of Starting FORTH, is in the process of completing a new book, to be called Thinking FORTH. FORTH titles from other authors include FORTH Fundamentals, Volumes 1 and 2 by Kevin McCabe and Discover FORTH by Thom Hogan. For a catalog of books, calculators, etc. send \$1 to EduCALC MAIL STORE, 27953 Cabot Road, Laguna Niguel, CA 92677. I have seen their catalog, but know nothing about the company.

\*\*\*\*\*

The July/August issue of Enthusiast '99 is due to be mailed in the first week of September. Due to TI's withdrawal of advertising and the IUG's decreasing revenues from product sales (IUG is no longer able to obtain the quantity or variety of products they once sold), the magazine is changing from 4 color to 2 color and will be on a less expensive grade of paper.

\*\*\*\*\*

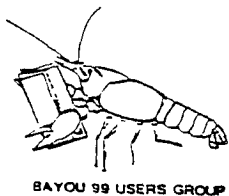
Western Washington Computer Club asks that users groups write to Compute to protest the magazine's decreased coverage of TI. WWCC reports that some users groups sent material to Compute as much as 8 months ago and Compute says the material is still under review. Compute's address is P.O. Box 5406, Greensboro, NC 27435-0406.

\*\*\*\*\*

Johnson Space Center TI Users Group reports that the game Galaxy, by Avalon Hill, receives an A rating. The game is available for the Commodore 64, TRS-80, Atari, IBM-PC, and TI-99/4A but the TI is the only one that allows the computer to play as an active player and launch attacks.

\*\*\*\*\*

It is becoming increasingly difficult for advertisers to properly advertise products for the TI-99/4A. Magazines are phasing out TI, de-emphasizing advertising, not meeting deadlines, etc. I began searching for ad space for Super 99 Monthly in April, submitted an ad in June, and will finally see it in print in September. With this amount of lead time, you will likely see some ads for products that have changed prices and/or availability. This may be beyond the control of the advertiser.



**"NOTICE"**  
**BAYOU 99 USERS GROUP**  
**P.O. BOX 921**  
**LAKE CHARLES, LA. 70602**

**MEETING 2nd. THURSDAY EACH MONTH AT 7:00 P.M.**  
**A. A. NELSON ELEMENTARY, 1001 COUNTRY CLUB**  
**ROAD, WEST OF LAKE STREET ABOUT 2 BLOCKS ON**  
**SOUTH SIDE OF COUNTRY CLUB ROAD.**

**Learn More About Your Texas Instrument Computer**  
**Join A Users Group Now**

**1984 MEETING DATES**

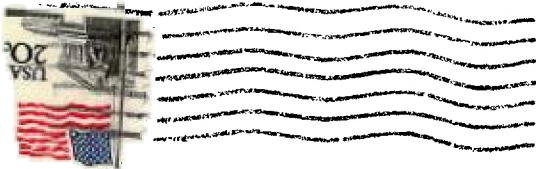
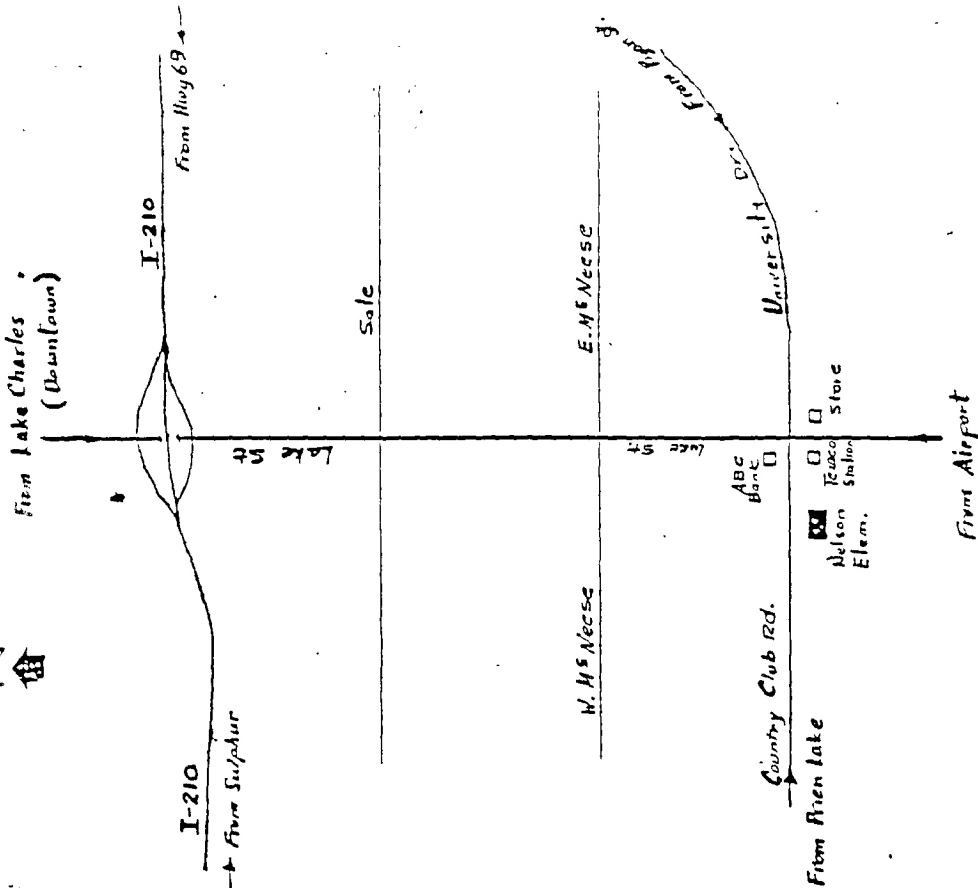
<b>JAN</b>	<b>FEB</b>	<b>MAR</b> 8	<b>APRIL</b> 12
<b>MAY</b> 10	<b>JUNE</b> 14	<b>JULY</b> 12	<b>AUG</b> 9
<b>SEPT</b> 13	<b>OCT</b> 11	<b>NOV</b> 8	<b>DEC</b> 13

BAYOU 99 USERS GROUP

MEETING LOCATION

A. A. NELSON ELEMENTARY

1001 COUNTRY CLUB ROAD



EDMONTON USER'S GROUP  
P.O. BOX 11983  
EDMONTON-ALBERTA, CANADA T5J-2

BAYOU 99 USERS' GROUP  
POST OFFICE BOX 921  
LAKE CHARLES, LA 70602