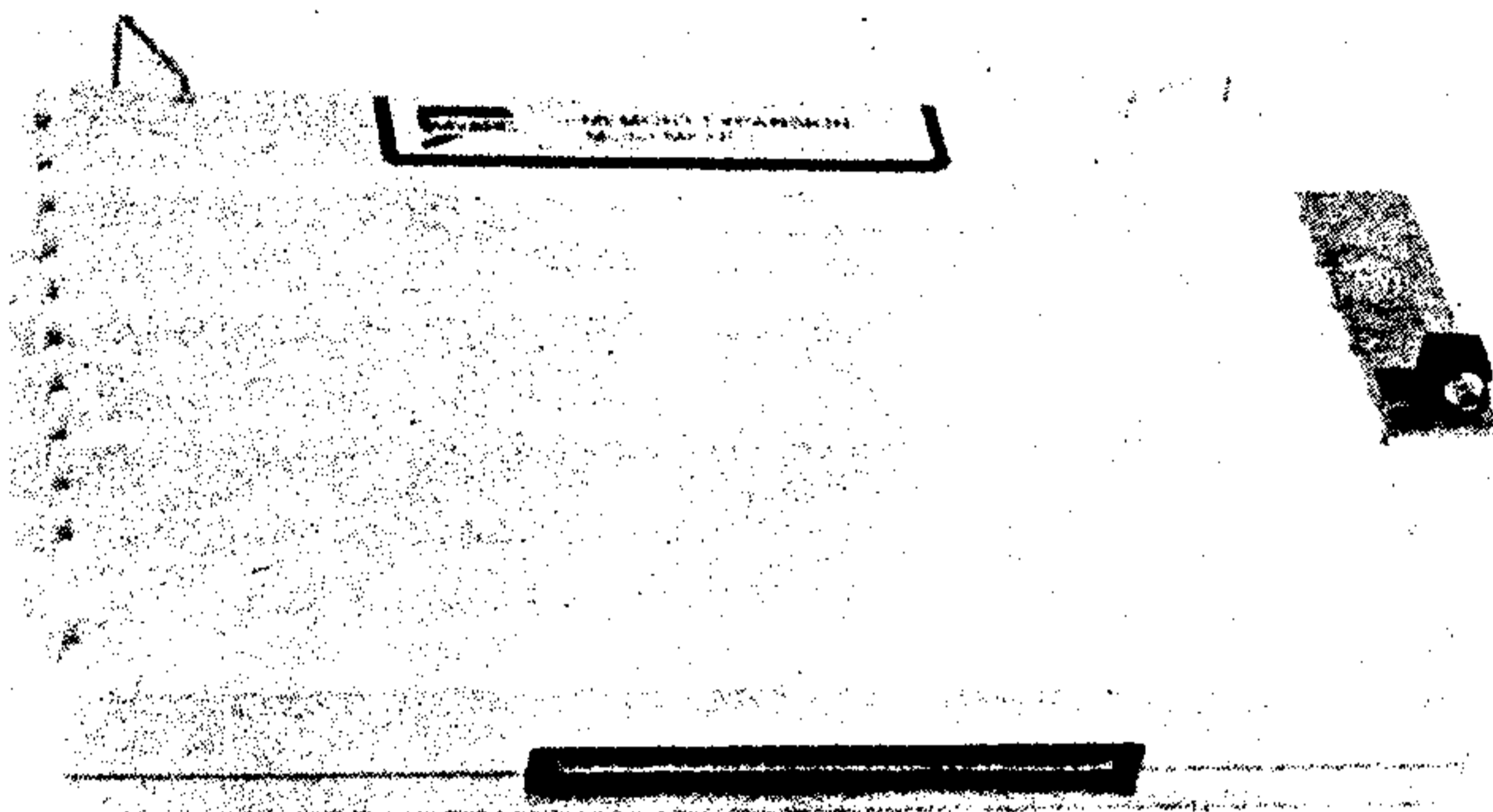


# MYARC

## 128K Memory Expansion and Real RAM Disk



- **PS/1 or 2** - Print spooler device name allows print spool (buffer) operation to an RS232 serial printer.
- **SPPIO** Same operation as above except with a parallel printer. (Example: OPEN #1:"SPPIO")
- **Call ABPS** - Aborts spool operation.
- **Call RDTEST** - Allows user to test all memory banks.
- **Call RDDIR** - Allows complete cataloging of RAM disk files (similar to cataloging disk drive).
- **Call EMDK(X)** - Where X allows the RAM disk to emulate any drive from 1 through 5, or no drive when X is 0. This command is necessary for auto boot programs, such as TI\*Writer.
- **Call PART(X,Y)** - Allows user to format RAM disk and print spooler.
- **Call VOL ("DISKNAME")** - Allows the RAM disk to be named for programs that require volume seeking. Example: Texas Instruments Multiplan.\*
- **Manufactured in the U.S., to strict quality levels. This will insure high system reliability unmatched in the industry.**
- **The only true RAM disk available for the TI 99/4A computer, offering high speed program load and execution, mass data and file storage. Complete high speed file manipulation plus 100% compatibility, make this unit the most sought-after peripheral ever offered.**
- **This unit may be purchased as a normal 32K memory expansion card and upgraded to RAM disk at a later time.**
- **The card includes 32K bytes of memory expansion RAM that is 100% compatible to all Texas Instruments software.**

Compu-Shop  
1747 Burwell Street  
Bremerton, Wa 98310  
(206) 373-4433

\*Trademark of Texas Instruments, Inc.