

The **GENEVE 9640** by MYARC, Inc.

It was a long time coming, but we think you will agree, the wait was worth it. MYARC listened when you told us what you wanted, took your ideas, added many of our own, and engineered the **GENEVE 9640**. Take a close look at **The GENEVE 9640**, and see, if you don't agree.

The **GENEVE 9640** has composite video output, to connect to a TV or computer monitor, like the T199/4A, as well as both high resolution (512 x 212 pixel's), and very high resolution (512 x 424 pixel's) RGB video output. In addition, up to 256 colors can be displayed on the screen at one time.

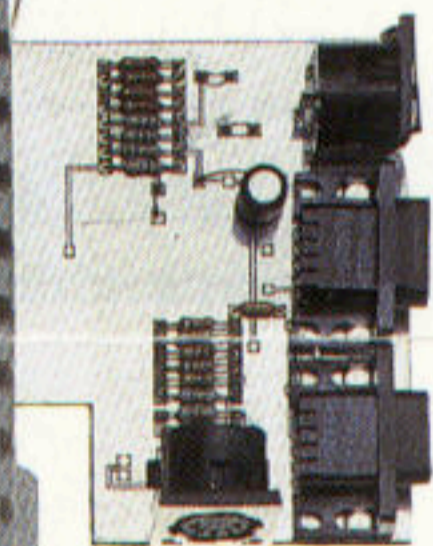
A PC style keyboard with input buffer is included with the **GENEVE 9640**. The RGB High Resolution Monitor with Sound, Monitor Cable, Mouse, and Enhanced Keyboard are optional.



*mailed 9/14 (actually 9/29/87)
to Geneve warranty, PO Box 140, Basking Ridge NJ 07920-1014*

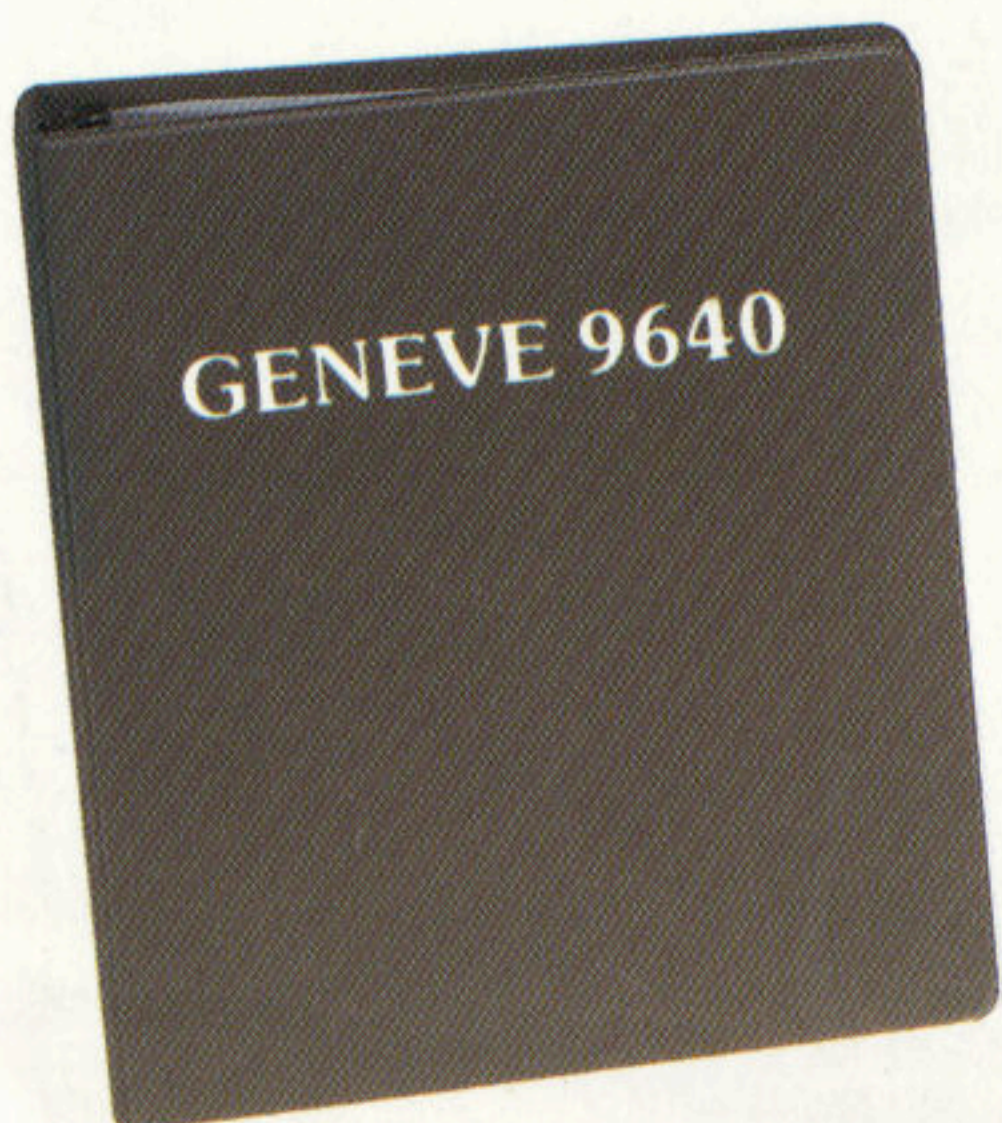


TI PEB required



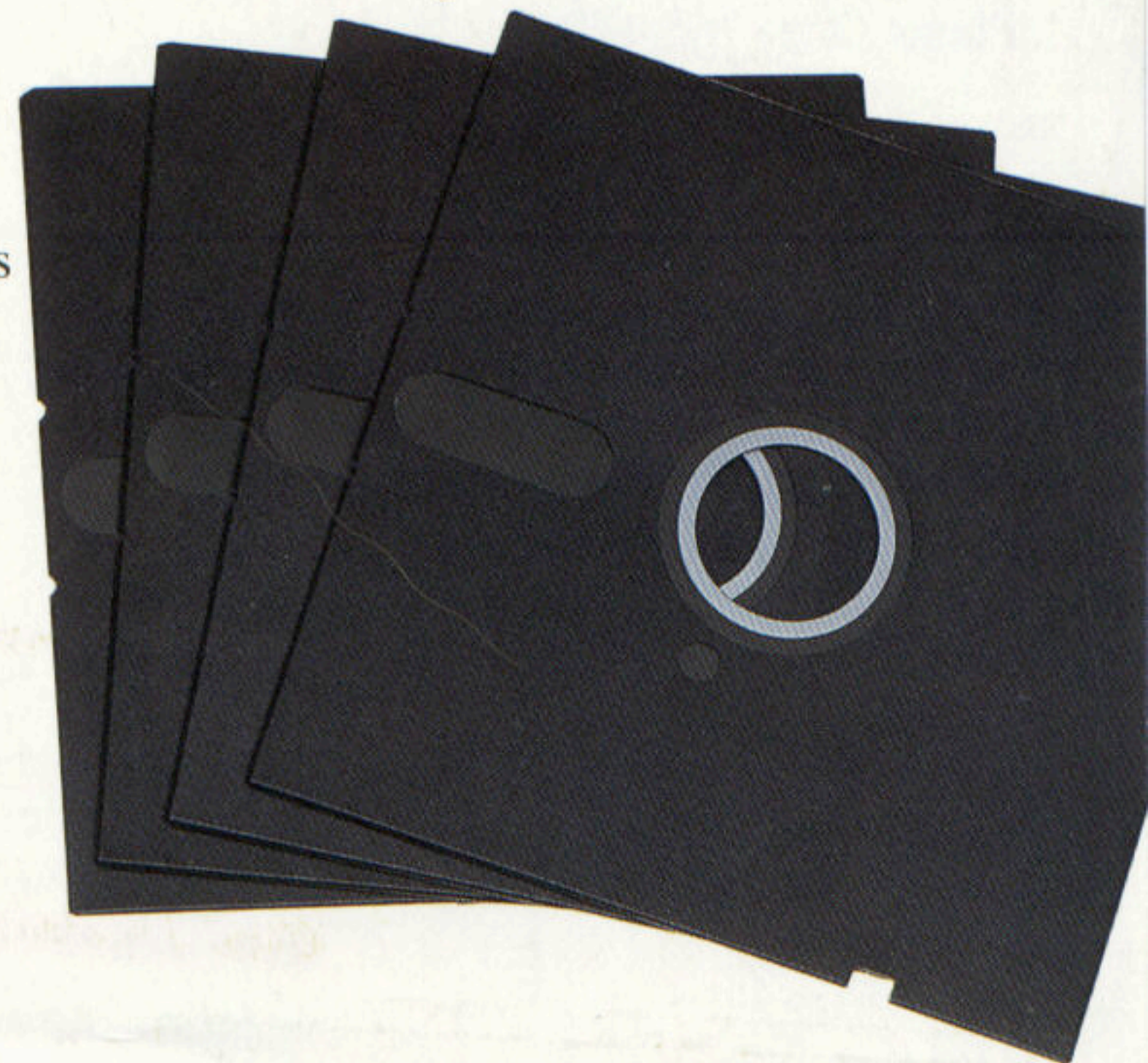
The **GENEVE 9640** comes in a protective shell ready to plug into the TI PEB. Connections are provided for Monitor with audio, Joy Stick, Mouse, and Keyboard.

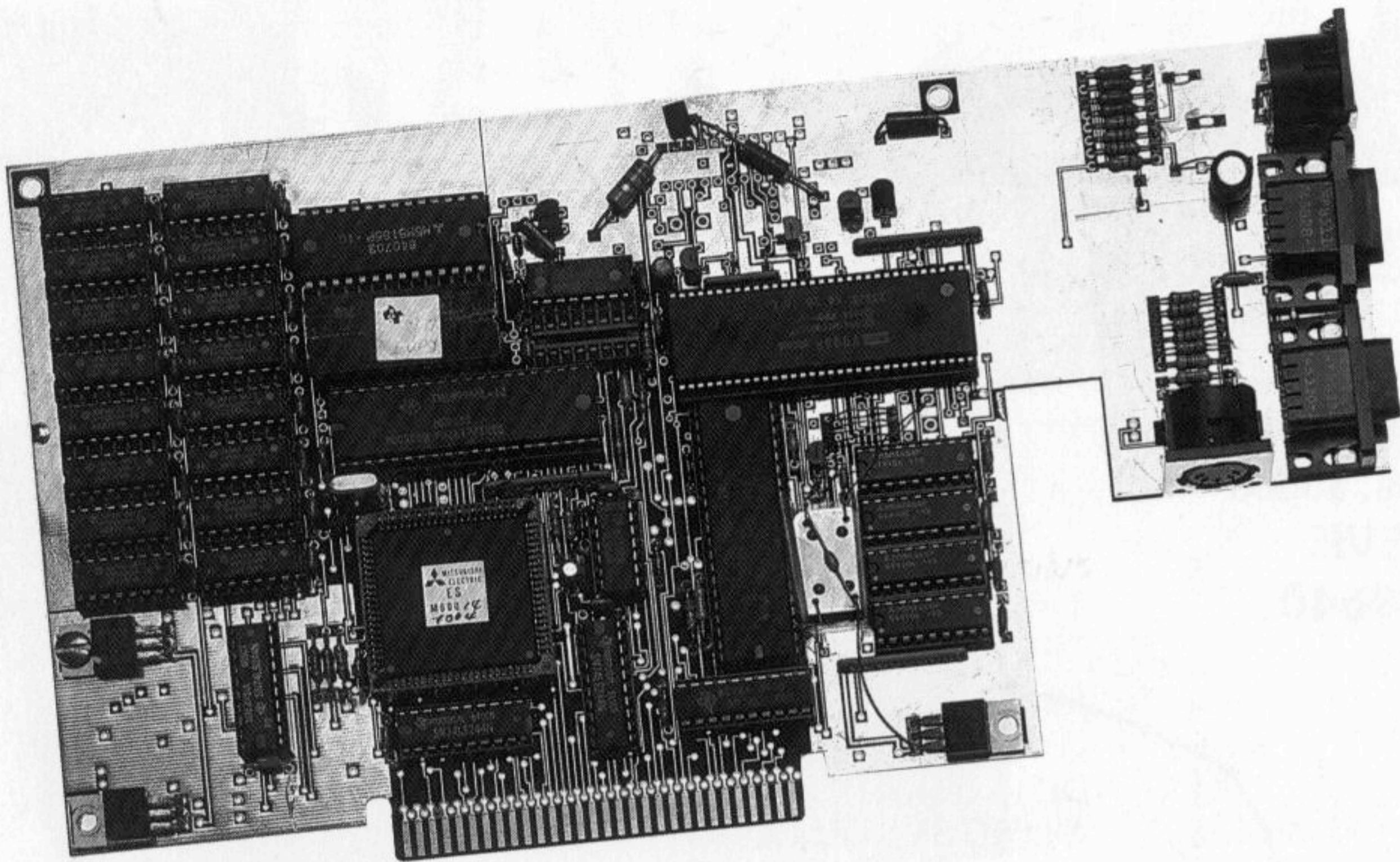
An outstanding 350 page manual with sections covering the introduction to and setup of the **GENEVE 9640**, using M-DOS, and Advanced Basic.



The **GENEVE 9640** comes with 6 pieces of software:

1. Cartridge Saver which allows the saving of most cartridge software to disk, then loading and running the saved software from disk.
2. Advanced Basic with new commands like draw and fill, the increased operating speed you always wanted, plus 32, 40, and 80 column display, and yes, it is compatible with T1 BASIC and EXTENDED BASIC.
3. The newest version 4.21 PASCAL run time to allow the loading and running of standard PASCAL software up to the full available memory.
4. T1 Word Processor upgraded to 80 columns, increased operating speed, plus Edit and Format reside in memory at the same time.
5. Microsoft MULTIPLAN upgraded to 80 columns, increased memory, and increased operating speed.
6. The MYARC DISK OPERATING SYSTEM.





There are so many features included in the **GENEVE 9640** we can not list them all in this brochure but three more you will want to know about are: built in real time clock with battery backup, 640K RAM, 12MHz clock speed and the **GENEVE 9640** is compatible with the vast majority of T199/4A software.

The companies listed below are the **MYARC** dealers who are stocking and have available for immediate shipment the **GENEVE 9640**. For more information or to place an order contact:

AMERICAN COMMUNICATIONS
428 Jean Wells Drive
Goose Creek SC 29445
(803) 797-5033

CITRONIC TECHNOLOGIES
981 Townley Avenue
Union, NJ 07083
(201) 686-5619

COMPU MASTER
112 Fairmead Road
Louisville, KY 40207
(502) 896-1935

COMPUTERS & CRAFTS
1418 Biscayne
Little Choot, WI 54140
(414) 788-6656 after 6 PM CST

DHEIN'S TRUE VALUE
7 West Airline Hwy.
Waterloo, IA 50703
(319) 236-3861

DISK ONLY SOFTWARE
P. O. Box 4170
Rockville, MD 20850
(301) 369-1339

EDUCOMP
6516 O'Henry
North Bridgeville, OH 44039
(216) 327-6579

GREAT LAKES SOFTWARE
804 East Grand River Avenue
Howell, MI 48843
(517) 546-0566

HUNTER ELECTRONICS
4N 370 Pine Grove
Bensenville, IL 50106
(312) 766-9503

L & M SYSTEMS
2330 East J-8 #173
Lancaster, CA 93535
(805) 948-1587

LAFLAMME & WRIGLEY WHOLESALE
5480 Canotek Rd., Unit 16
Ottawa, ON, Canada K1J 9B1
(613) 745-2225

LYBROOK INDUSTRIES
P. O. Box 1014
Wolfforth, TX 79382
(806) 866-9892

NOVA COMPUTERWARE
52 Airport Road
Edmonton, AB, Canada T5G OW7
(403) 452-0372

PALACE SIMULATIONS
13 Hill Street
Morristown, NJ 07960
(201) 292-1306

PLAZA COMPUTERS
424 Plaza Drive
Birmingham, AL 35235
(205) 836-7608

QUEEN ANNE SHOPPE
6-1/2 Boston Street, Room No. 4
Seattle, WA 98109
(206) 283-0953

ROBINETTE & ASSOCIATES
2850 Delk Road, Apt. 39A
Marietta, GA 30067
(404) 953-4584

SEEBER COMPUTERS
10668 Kaufman Road, NE
Silverton, OR 97381
(503) 873-3140

SPECIALIST IN
821 Main Street
Hopkins, MN 55343
(612) 938-3161

SUPERSOFT
34 California Drive
Rochester, NY 14616
(716) 663-0397

TENEX COMPUTER EXPRESS
P. O. Box 6578
South Bend, IN 46660
1-800-348-2778 (In Indiana 1-800-225-6838)

TEXAMENTS
53 Center Street
Patchogue, NY 11772
(516) 475-6463

VIDEO ELECTRONICS MARKETPLACE
458 Pleasant Street
Brockton, MA 02401
(617) 559-8935

VIDEOVISION
236 Upton St., P. O. Box 183
Grafton, MA 01519
(617) 839-4134

TI/Reg. TM Texas Instruments Inc.

MULTIPLAN/Reg. TM Microsoft Corp.

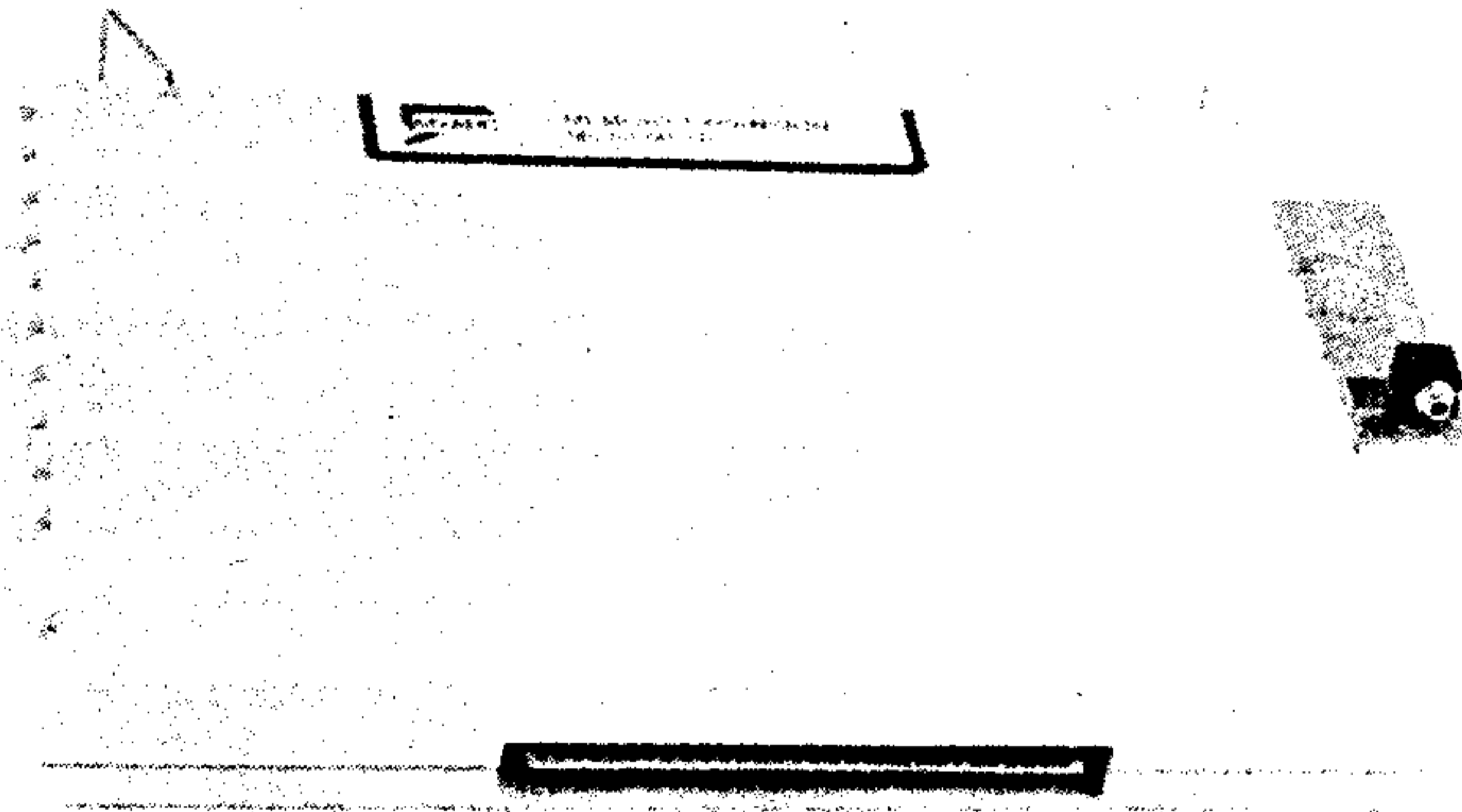
MYARC, Inc.
P. O. Box 140
Basking Ridge, New Jersey 07920
Phone (201) 766-1700

BULK RATE
U.S. POSTAGE
PAID
Permit No. 533
Round Rock, TX

A 0884 E2 T
MUNCH
P.O. BOX 7193
WORCESTER, MA 01605

MYARC

128K Memory Expansion and Real RAM Disk



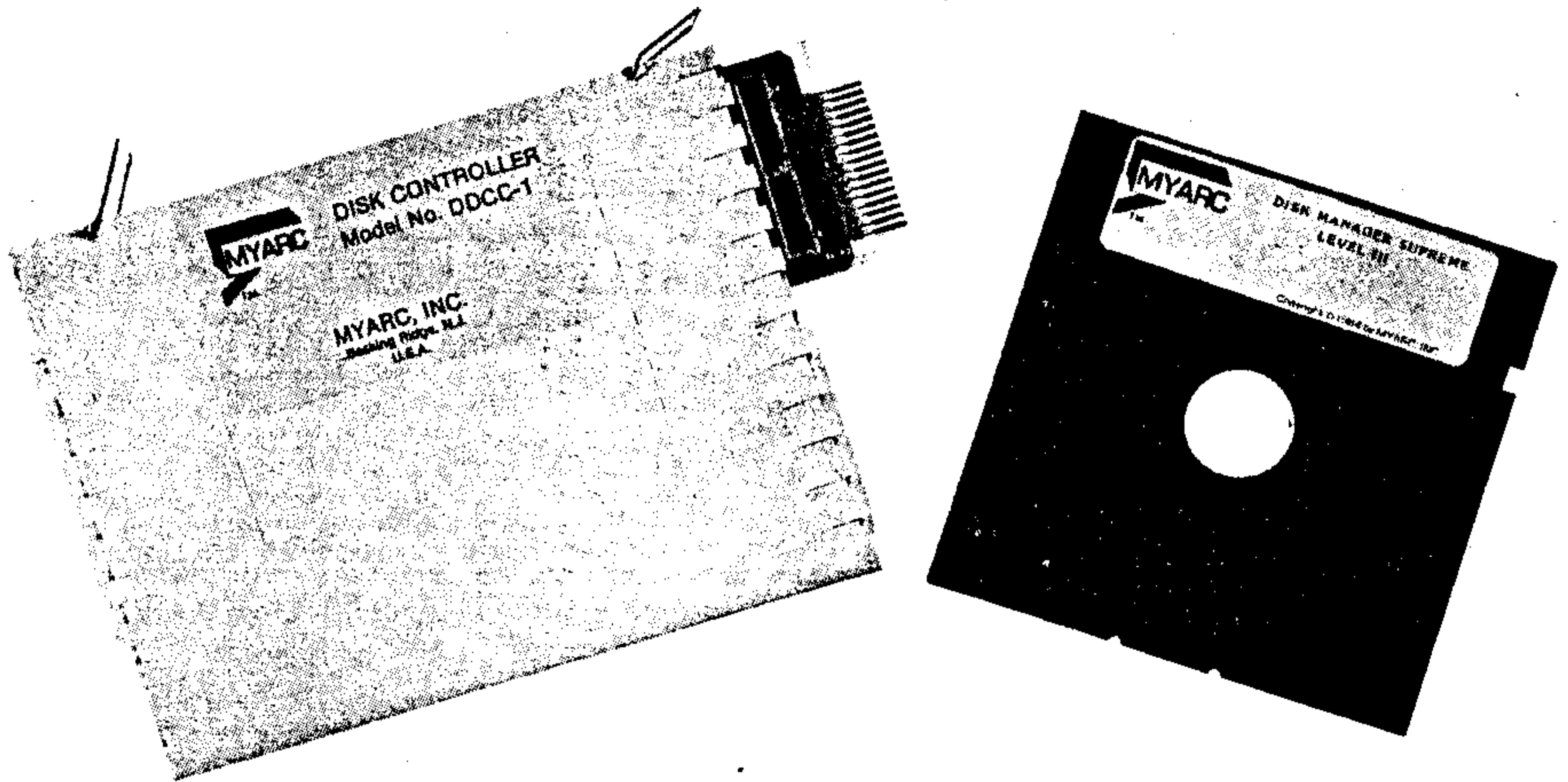
- **PS/1 or 2** - Print spooler device name allows print spool (buffer) operation to an RS232 serial printer.
- **SPPIO** Same operation as above except with a parallel printer. (Example: OPEN #1:"SPPIO")
- **Call ABPS** - Aborts spool operation.
- **Call RDTEST** -Allows user to test all memory banks.
- **Call RDDIR** - Allows complete cataloging of RAM disk files (similar to cataloging disk drive).
- **Call EMDK(X)** -Where X allows the RAM disk to emulate any drive from 1 through 5, or no drive when X is 0. This command is necessary for auto boot programs, such as TI*-Writer.
- **Call PART(X,Y)** - Allows user to format RAM disk and print spooler.
- **Call VOL ("DISKNAME")** -Allows the RAM disk to be named for programs that require volume seeking. Example: Texas Instruments Multiplan.*
- Manufactured in the U.S., to strict quality levels. This will insure high system reliability unmatched in the industry.
- The only true RAM disk available for the TI 99/4A computer, offering high speed program load and execution, mass data and file storage. Complete high speed file manipulation plus 100% compatibility, make this unit the most sought-after peripheral ever offered.
- This unit may be purchased as a normal 32K memory expansion card and upgraded to RAM disk at a later time.
- The card includes 32K bytes of memory expansion RAM that is 100% compatible to all Texas Instruments software.

Compu-Shop
1747 Burwell Street
Bremerton, Wa 98310
(206) 373-4433

*Trademark of Texas Instruments, Inc.

MYARC™

DOUBLE SIDED, DOUBLE DENSITY, DISK CONTROLLER.



- Read or write in three formats.
 - Standard single density.
 - Standard double density.
 - Non-standard double density.
- Lightning fast operation. Much faster than original equipment. Faster than competitive units.
- New commands greatly enhance the operating system.
 - Call DIR (x):** allows the user to catalog any of four disk drives without overwriting memory!
 - Call LR:** Emulates the call load command.
 - Call LLR:** Emulates the call link command.
 - Call ILR:** Emulates the call init command.
- Track access time may be set for any, or all of four drives. This allows the user to take full advantage of the new 6ms units for speed.
- Manufactured in the U.S., to strict quality levels. This will insure high system reliability unmatched in the industry.
- Includes cabling, manual and disk manager.
- Myarc's Level III disk manager allows flexibility and features that are unsurpassed! Full screen editing.
- Single key operation.
- Fast copy for high speed duplicating.
- Single stroke file handling.
- Editor assembler load and run screen.
- Formats in single sided, double sided, double density standard, and double density non-standard formats.

Compu-Shop
1747 Burwell Street
Bremerton, Wa 98310
(206) 373-4433