

TOMPUTER SOFTWARE PRESENTS:

THE CASTLE OF DEATH

BEYOND THIS DOOR LIES DEATH Ψ DARE YOU ENTER?



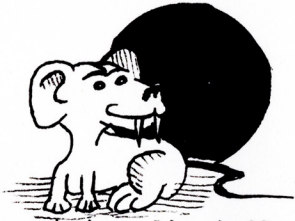
THE CASTLE OF DEATH

By Thomas M. Perkowitz

Copyright © 1983 Tomputer Software

This book and the game THE CASTLE OF DEATH are the property of TOMPUTER SOFTWARE, and may not be reproduced in whole or in part by any means, without written permission.

THE CASTLE OF DEATH



Scenario-

Countless eons ago in a dimension not too dissimilar from our own, the amazing Stone of Power was created from pure mystic energies. So great was the power of The Stone that it developed its own persona and became liken to a demigod. In order to protect itself from outside forces it created a great fortress of despair -- THE CASTLE OF DEATH.

Threatened with the total destruction of his world,, a lone gnome has vowed to find and destroy the cursed Stone. To fulfill his destiny he must gather the nine sets of the octet of keys which will lead him to the Arena of the Darkhold, wherein lies the great Stone guarded by the unstoppable boogie monster. But first he must face threats heretofore unimaginable, with Death constantly looking over his shoulder.

You are that gnome. The only way to save your world and countless others from total annihilation is to find and slay The Stone.



THE CASTLE OF DEATH

PURPOSE- to fight your way through the castle and find the Stone of Power.

MOVING- The gnome is moved using the eight directions of the joystick. When you let go of the joystick it will automatically center the gnome on the nearest space.

BOMBS- Bombs can be picked up from the lower left hand corner of the supply room (the room you start in).

- You get 5 bombs per level.
- You can carry only 3 at a time.

To explode a bomb, move directly next to the object that you want destroyed and press the number '1' key.

ENERGY- You start out with 50 units of energy and lose 10 units every time you bounce off a wall. To recharge just move onto the plug in the lower right hand corner of the supply room. If you run out of energy you lose a life.

LIVES- You start out with 3 lives and lose one every time you die. You can get bonus lives by finding the GOD OF LIFE.

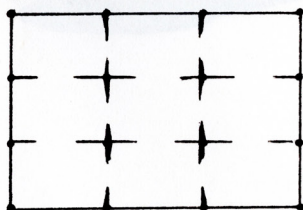
SHIELD- By holding down the button on the joystick you activate your shield. This will protect you from almost any moving object. Using your shield uses up energy.

WHAT IF I TOUCH THIS OR MOVE ONTO THAT?- Try it and find out.

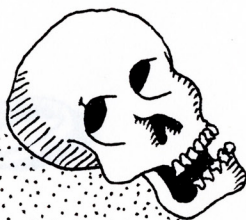
ADVANCING- To advance to the next level you must collect all 8 keys then move onto the plug.

WINNING- You win when you get the Stone of Power.

ROOMS- Each level has 9 rooms. Each room (except the supply room) has one key. To move into the next room just go out a door.



supply room



WHAT'S WHAT IN THE CASTLE OF DEATH



GNOME



KEY



PLUG



BOMB



BAT



AXE



WEB



MOUSE



LIGHT SWITCH



SKULL



SPEAR



CHEESE



PIT



TWIG



SPIDER



HORN



BOOGIE MAN

?

THE STONE OF POWER







Tomputer Software

"software for the TI-99/4(A) Home Computer"

1550 Montgomery Drive
Deerfield, IL 60015