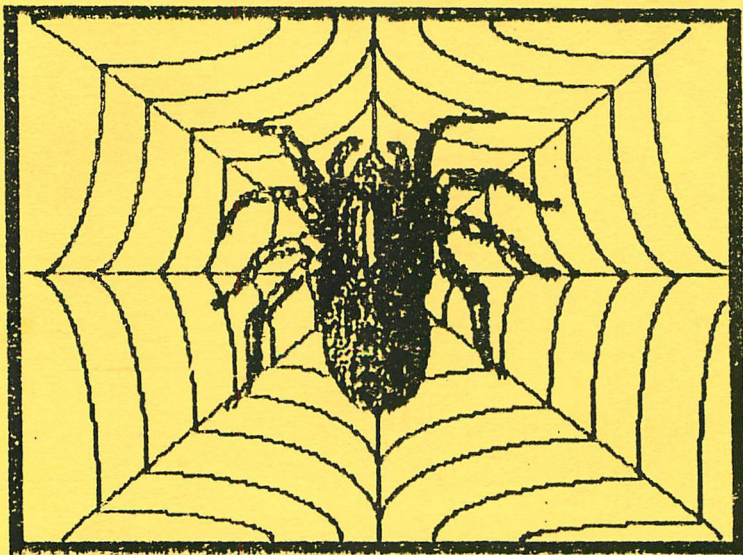


# The Spider's Guide to FUNNELWEB Configuration



by Larry Tippet

## CONFIGURING FUNNELWEB

The purpose of this manual is to take some of the mystery out of configuring FUNNELWEB. It seems as though few people truly understand the way to go about entering in the various programs they wish to load from FUNNELWEB. If you follow these instructions to the letter, you should have no problems in making FUNNELWEB load your favorite programs.

Each screen that you will encounter during the running of CONFIGURE will be displayed in this booklet and the various key presses are explained.

Select "CONFIGURE" from the menu of "FUNNELWEB", or enter "CF" from any 'option 5' loader and it will load. You should have a screen that looks like this:

```

  _____
 | FUNNELWEB Vn 4.40 |
 |                     |
 |   CONFIGURATION   |
 |                     |
 |_____
```

At this point, just press any key. This should be on the screen now.

```

  _____
 | Sysinfo      Quit      Install |
 |_____
```

If you need an explanation on what you should do, press "?" (question mark) on almost any screen and a display is presented with a brief description on what that screen is asking for.

What you want to do when this screen appears is press "S" for Sysinfo and another box will be displayed showing this:

```

  _____
 | Sysinfo      Quit      Install |
 |_____
```

```

  _____
 | Load        |
 | Edit        |
 | Save        |
 |_____
```

What you need to do during most of the screens, is press the first letter of the operation that you wish to execute. You will start with this screen, and just short of completing CONFIGURATION, finish with this screen.

PRESS "L" for Load, and another box will appear on top of

## CONFIGURING FUNNELWEB

the last screen.

Sysinfo                      Quit                      Install

Load  
Edit

DSK1.SYSCON

Enter the drive number of the drive you currently have the FUNNELWEB files on and press <ENTER>. At this point, it will load the SYSCON file, which is a file that contains many of the defaulted information concerning the Funnelweb programs such as colors, and return you to this screen:

Sysinfo                      Quit                      Install

Load  
Edit  
Save

What you want to do now is press "E" for EDIT. This will allow the changing of the menu items that are currently saved in the SYSCON file. This is shown on the screen:

Sysinfo                      Quit                      Install

Load  
Edit  
Save

Loading  
Devices  
Colors  
Menu  
XB List  
UL List

## CONFIGURING FUNNELWEB

**LOADING** is where the primary system files are found, whether or not you have boot tracking on and which of three program segments is to be loaded immediately upon booting.

Press "L" for **LOADING** and this will show you the parameters for loading.

It should look like this:

Sysinfo	Boot	Install
	<b>Loading</b>	
<b>Load</b>	<b>D</b> Boot Tracking	OFF
<b>Edit</b>	<b>C</b> TI-Writer side	1
<b>Save</b>	<b>M</b> Edit /Assm side	1
	<b>X</b> Working Drive	
	<b>U</b> Immediate	DR
	HardDisk Path	OFF
	Dskx.	

You select pressing the first letter of the desired function. In pressing "B", the **BOOT TRACKING** (knowing where the programs were loaded from) is switched from on to off and back on again. Leave it ON, if all the Funnelweb files are together on one disk, so you don't have to tell it where to load other programs segments from.

If you press "T" for TI-Writer side, you tell it on what drive the Text Editor and other files loaded from the Text Editor central menu is found. You can enter the drive number and press <ENTER> If you have Boot Tracking turned on, then this option is not active.

The same for "E" for the Edit/Assm side. Files loaded from the Program Editor central menu are found on this drive. If,

## CONFIGURING FUNNELWEB

again, have Boot Tracking turned on, this option is also not active.

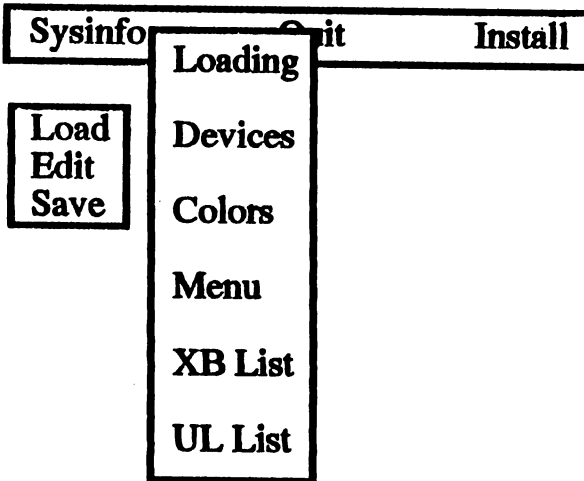
Working drive ("W") is the one that is used in the Text Editor AND the Edit/Assm for the default drive for LoadFile, and SaveFile in the editor and the default drive number when you load the formatter if no device/filename is previously set when you leave the editor. Enter DSK2. or whatever drive you prefer to access. You could enter a hard drive pathname and sub directory if you like, (WDS1.FEB.) and press <ENTER>.

The IMMEDIATE ("I") is for the portion of Funnelweb you wish to load immediately upon entering Funnelweb via the "FW" or "UTIL1" files. The "LOAD", "FW" and "UTIL1" are all pretty much the same file. The only significant difference is in the "LOAD" program. Here, and only here is the first menu given. (The XB MENU). You really don't need all three of these files copied to the drive. You only need either "FW" or "UTIL1" if you are loading through an E/A loader or a program that allows you to load an OPTION 5 program. But extended basic will need the "LOAD". On this display, if you press "I" for immediate, it'll cycle through the choices of immediate loading. ("FW" is the main Funnelweb program file, "UL" is your USER LIST, "DR" is to load DISKREVIEW)

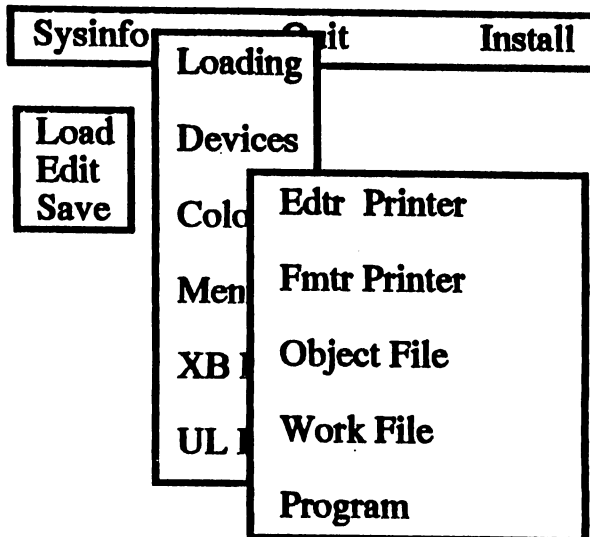
If you press "H" for the HardDisk Path, it will cycle through the various paths available. If you set this to path "ON", then "WDS1.FWB" will be added to the filename you enter on the various menus and it will load the programs from the hard drive under the sub directory "FWB".

After you have made all the changes, press FCTN 9 once to go back to this screen:

## CONFIGURING FUNNELWEB



Now, you can edit the DEVICES. Press "D" and this screen will appear:



Press the first letter of the device you want to change.

"E" will show the default devicename of the editor printer. You can set this to just "PIO" if your printer is parallel, or if you have a serial printer, you could change this to RS232.BA=2400, etc. (Check your printer manual for the appropriate devicename.) Press <ENTER> on the name, or change it to your specifications.

Now press "F" and the default printname is displayed for

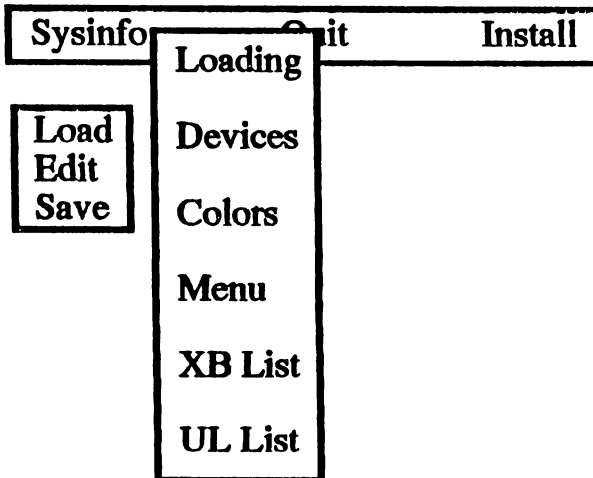
## CONFIGURING FUNNELWEB

the formatter. Notice here that the PIO has an extension of ".LF". The same here for a serial printer. This means that the line feeds are disabled and the printer will only perform a line feed when told to.

The "Object File" is mainly for defaulting an DF80 OBJECT filename for the edit/assembler. If you have a need, enter the object filename, and press <ENTER>. Many people may choose to skip this entry.

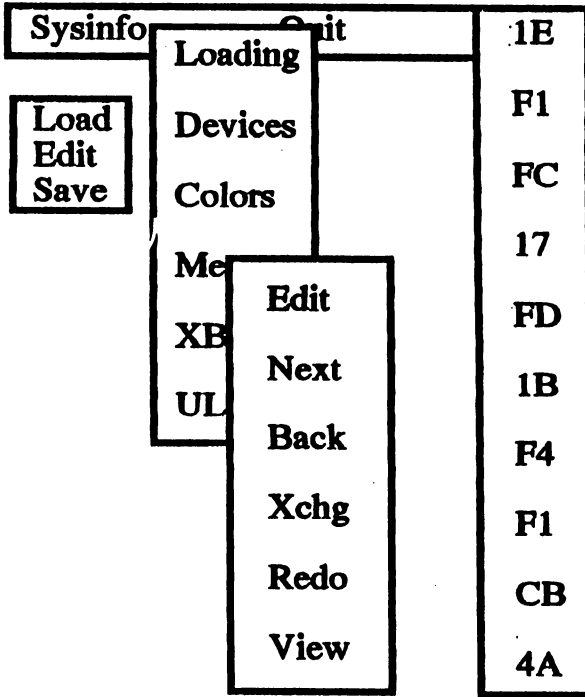
"Work File" is a default for SaveFile in the text editor. You may set it for just DSK2. or WDS1. so you have the path set, or you could also include a filename if you wanted to.

"Program" ("P") will set an E/A program file as a default. This will be displayed as the default filename if you should enter LOADERS on the central menu. Ie; DSK6.AR will be the program filename displayed if you want to run an E/A program from the E/A LOADER. Finished entering in all the defaults, press FCTIN9 and the screen will change back to this:



This time press "C" for COLORS. This is to configure the screen colors to your preference. This menu will appear:

# CONFIGURING FUNNELWEB



The box on the left hand side of the screen are the color combinations. The upper most is highlighted by inverse video.

Pressing "E" for edit will show you the different color codes and will accept the input on the first code. The screen will look like this:



## CONFIGURING FUNNELWEB

Subinfo	Color	
	0 Transp't	1E
	1 Black	F1
I	2 Md / Green	FC
H	3 Lt / Green	17
S	4 Dk / Blue	FD
	5 Lt / Blue	1B
	6 Dark Red	F4
	7 Cyan	F1
	8 Med / Red	CB
	9 Lt / Red	4A
	A D / Yellow	
	B Lt / Yellow	
	C Dk / Green	
	D Magenta	
	E Gray	
	F White	
	View	

Enter the color codes you would like. The first being the foreground color and the second being the background. After pressing <ENTER> the screen will revert back to the screen prior to this one, where you can VIEW this combination. This configuration is for the screen and text colors.

Press "N" for NEXT, will move the cursor down to the next combinations so you can do the same. This set is for the boxes displayed in DISKREVIEW and for the upper command line and lower tab bar in the text editor.

The remaining color combinations are for when you choose to change the colors in the text editor using CTRL3. Pressing control 3 the screen/text colors will take the color set in the 2nd color combination in the list. Pressing CTRL3 again, will advance the colors to the 3rd in the list, etc. The command line at the top of the editor and the tab line at the bottom, will always keep the color combinations of the 2nd configuration in the list.

## CONFIGURING FUNNELWEB

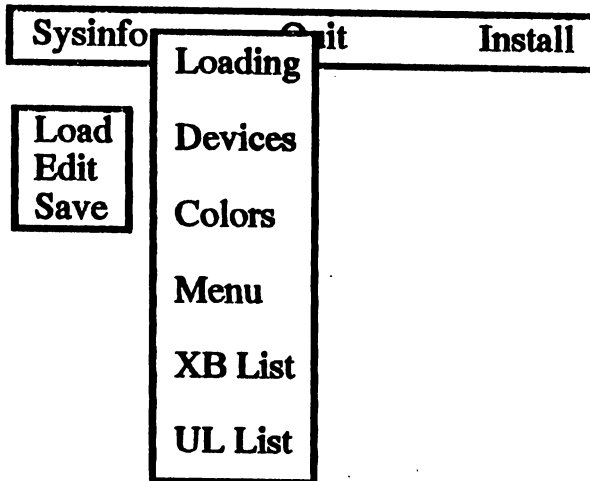
The color combinations also may be changed in DISKREVIEW or from either central menu. They start out as being the 1st for the screen/text color and the second being for the window/window text colors. Each time you press "0" (zero) BOTH colors will advance one combination in the list. ie; 1st being screen/text, second being for the window/window text, press "0", screen/text=2nd in the list, window/window text=3rd in list, etc.

"B" for BACK will move the cursor up one line on the code list.

"X", will XCHANGE the displayed default colors for another set of defaulted choices.

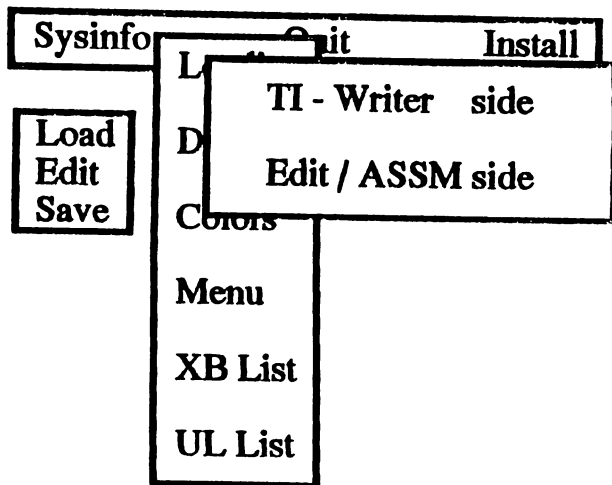
"R" for REDO will return all selections back to their original defaults.

When you have finished with the color configurations, press FCTN9 to go back to this screen:



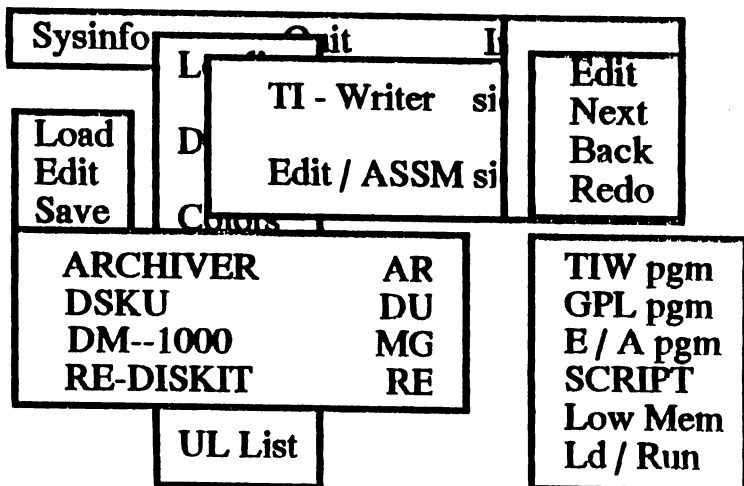
Now, press "M" for the MENU changes. the screen will change and you will be confronted with this next screen:

# CONFIGURING FUNNELWEB



These are the two central menus in the main FUNNELWEB program that you are returned to upon exiting either the Text Editor, Formatter, Program Editor or Diskreview. You can page between these two menus by pressing the spacebar. Press "T" to edit the TI-Writer menu.

This is where it gets fun. The screen gets a little busy from here, so follow along closely and you shouldn't have any problems. When you press "T", the screen will look like this:



Press "E" for edit and the first menu is highlighted and the cursor will be on the "A" in ARCHIVER. THIS is what will be displayed on the menu. You can call it anything

## CONFIGURING FUNNELWEB

you like. It does NOT necessarily have to be the program name. Enter how you want the menu to read and press <ENTER>.

Now, the cursor/highlight, moves over to the "AR" shown in the previous figure. THIS is the filename.

Notice that the program will only allow you to enter a two (2) letter filename. This means if you want to run any assembly programs from this menu, you may have to rename some to a name of ONLY 2 characters.

For instance, SPELLIT \_COULD\_ be run using a two letter filename, if you rename it to "SP". Just remember that if you configure SPELLIT again at a later date, you enter the name of "SP" as the SPELLIT filename to configure. This is also true for any other program that you must rename.

Enter the 2 letter filename and press <ENTER>.

Now the box to the immediate right of the filenames is highlighted. This is a list of the possible LOADERS for the programs. You select the desired loader by pressing "N" for NEXT, or "B" for BACK. Often times, the best way to determine which loader is the right one, is by trial and error. Once you have determined which is the appropriate loader, highlight it and press <ENTER>.

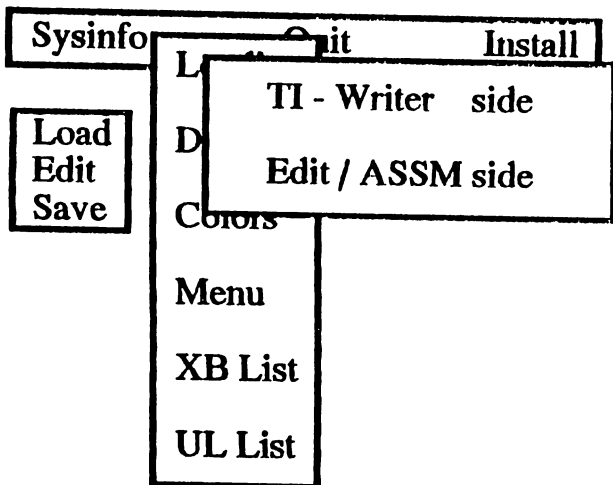
All the files you have listed on this central menu MUST reside in the drives previously specified as the TI-Writer side, UNLESS Boot Tracking or Hard Disk path were turned on.

This will complete THIS filename configuration. To do the remainder of the 4 listed files, press "N" for NEXT and the highlighted bar will move down to the next filename. Proceed in the same manner as you did for the previous program.

REMEMBER, rename whatever you have to, and they can ONLY be assembly programs. NO EXTENDED basic.

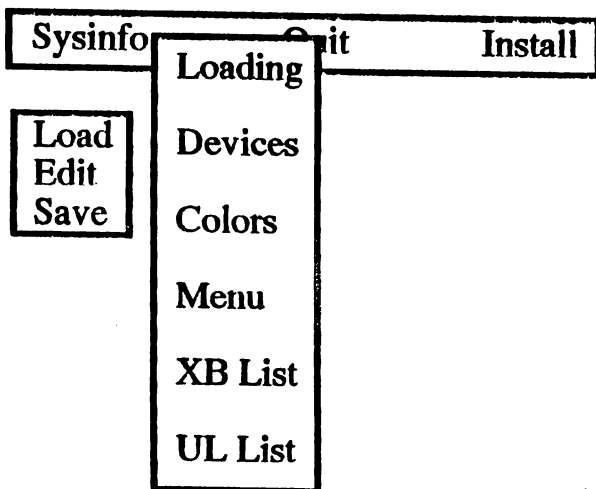
Now that you're done with the configuration of the TI-Writer side, press FCTN9 and the menu on the following page will be displayed again.

# CONFIGURING FUNNELWEB



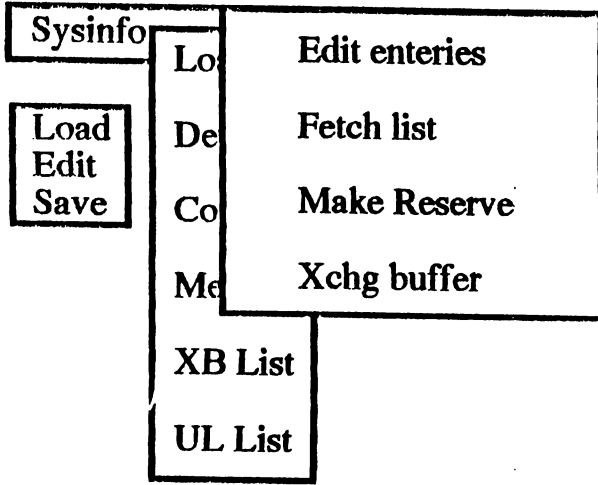
Press "E" for the Edit/assm side. This side is done EXACTLY the same as the TI-Writer side. Again, only 2 letter filenames will be accepted. Refer to the operation described for the TI-Writer side if you have any questions.

When you have completed the configuration of this side, press FCTN 9 to go back to the above screen, then press FCTN 9 once again until this screen appears:

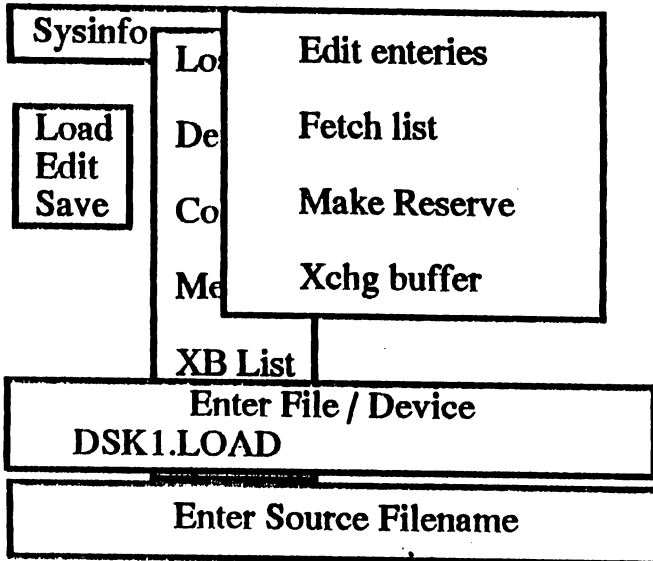


Now, you can edit the XB list of programs. This list is stored in the LOAD program. Press "X" for XB list and you get another window to select from. It will look like the illustration shown on the next page.

# CONFIGURING FUNNELWEB



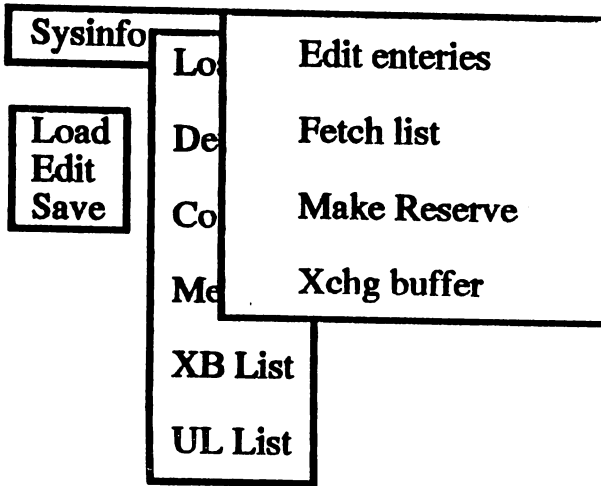
Press "F" to fetch the list. You will then be prompted for the device/filename:



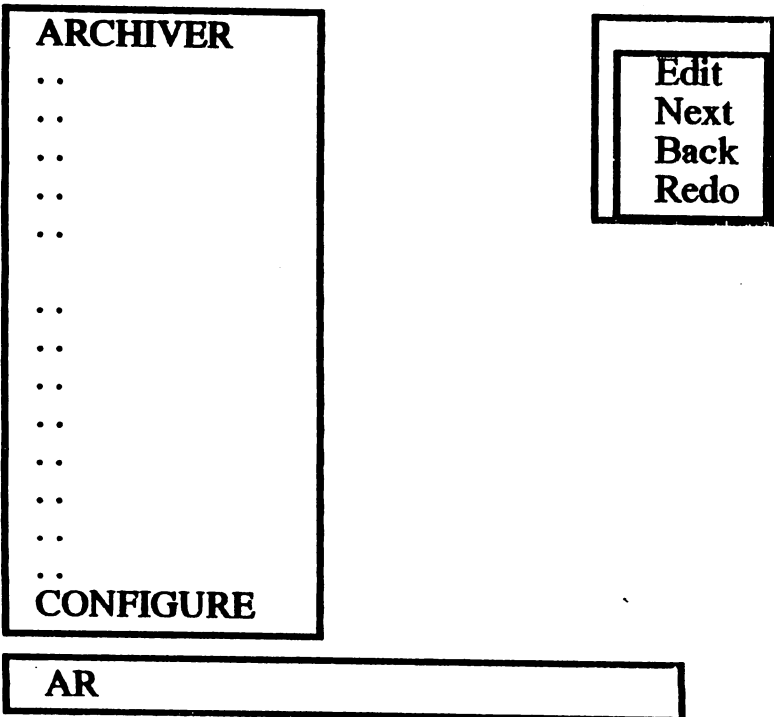
Press <ENTER> on the drive number, or change it to the drive number you have the LOAD program for FUNNELWEB on to load the list.

The screen will return to the next illustration.

# CONFIGURING FUNNELWEB



Now press "E" to edit the entries and you get yet another menu screen to configure. This time you get to put in XB programs to run as well as assembly. This is the **ONLY** area where you can load XB programs. All the rest are **ASSEMBLY ONLY**. The screen will look like this:



The first selection is highlighted and the filename is shown

## CONFIGURING FUNNELWEB

on the bottom of the screen in the box. To edit entries, press "E" and the screen changes once again.

<b>ARCHIVER</b>		TIW	pgm
		GPL	pgm
		E/A	pgm
		Ld /	run
		Script L	
		LowLoad	
		L&R	A/M
		XB	pgm
		XB	retn

Boot Path	Yes
Set Side	T-W
Reminder	NO

AR
----

The cursor is on the menu name at the top of the screen. Change it to whatever filename you would like to have appear on the first location. Press <ENTER>.

The center box is now highlighted. Press the first letter of the item you want to change. It looks like this now:

<b>ARCHIVER</b>		TIW	pgm
		GPL	pgm
		E/A	pgm
		Ld /	run
		Script L	
		LowLoad	
		L&R	A/M
		XB	pgm
		XB	retn

Boot Path	Yes
Set Side	T-W
Reminder	NO

AR
----

Pressing "B" will set the boot path on or off. (This is the same as boot tracking.) If you leave it as "YES", then you don't need to specify the DSK number in the filename on the lower part of the screen in the next prompt. It will load



## CONFIGURING FUNNELWEB

it from the same drive number that the FUNNELWEB files were loaded from.

Pressing "S" will toggle between T-W and E/A sides. This is only relevant if you set the Boot Tracking on this screen to YES and the Hard Path and Boot Tracking for the central menus was turned off.

"R", for REMINDER, means that the program will prompt you to insert the appropriate disk into the drive prior to loading. If, for instance, you had the file you wish to load on another floppy and had to insert the disk before loading.

Now, you edit the filename of the actual program. NOT necessarily what you called it on the menu. The lower box is highlighted and the cursor appears on the "AR".

ARCHIVER		TIW	pgm
		GPL	pgm
		E/A	pgm
		Ld /	run
		Script L	
		LowLoad	
		L&R	A/M
		XB	pgm
		XB	retn
Boot Path	Yes		
Set Side	T-W		
Reminder	NO		
AR			

If you had set the BOOT PATH to NO, then you would now enter the pathname and filename. Like this:

DSK1.AR
---------

But, if you left it YES, then only the filename is needed here. If you had the boot path set to YES, and entered the DSK1. you will get an error when FUNNELWEB attempts to load the program. It will be trying to load, possibly, DSK6.DSK1.AR, because it will automatically add the drive that FUNNELWEB was loaded from, to the filename.

## CONFIGURING FUNNELWEB

Either way, enter the filename and press <ENTER> and the box on the right side of the screen is highlighted .

ARCHIVER

TIW	pgm
GPL	pgm
E/A	pgm
Ld /	run
Script L	
LowLoad	
L&R	A/M
XB	pgm
XB	retn

Boot Path	Yes
Set Side	T-W
Reminder	NO

AR

You can select the appropriate loader using either the arrow keys, or "N" and "B", then press <ENTER>. When you do, you will be returned to this screen:

ARCHIVER  
..  
..  
..  
..  
..  
..  
..  
..  
..  
..  
..  
..  
..  
..  
..  
CONFIGURE

Edit  
Next  
Back  
Redo

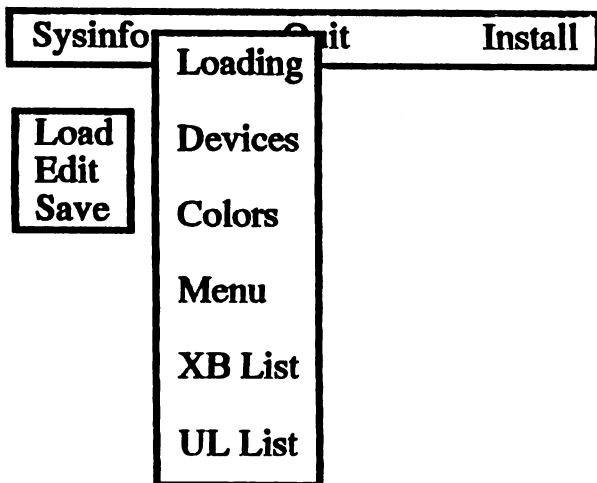
AR

## CONFIGURING FUNNELWEB

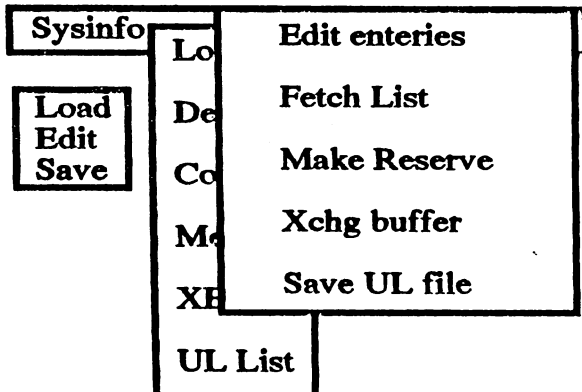
Press "N" to move the cursor down, and press "E" to edit it in the same fashion. Proceed with the rest of the filenames as you did for the first.

If you notice, there are only 6 inputs for the top part of the box, and 9 for the bottom. The top portion is the one that will be shown on the left side of the LOAD menu. This is where TI-Writer is the first selection. These are the NUMBER selections on the menu. The ones at the bottom are the LETTER selections.

When you are finished editing this menu, press FCTN9 (back) TWICE! This will exit to this screen:



From here, you will want to press "U" for USER LIST. When you do, this screen will appear:



## CONFIGURING FUNNELWEB

Press "F" to FETCH the list. Since the filenames on your user list are probably "U1", "U2", and "D1", etc., this will have to be repeated 3 times, or as many times as you have user list files. When you press "F", this screen will appear:

Sysinfo	Lo	Edit enteries
Load	De	Fetch List
Edit	Co	Make Reserve
Save	Me	Xchg buffer
	XB	Save UL file

Enter File / Device  
DSK1.UL

Change the drive number to the number that holds your list, and change the "UL" to "U1", or the filename of the file you wish to edit. Once you have pressed <ENTER> and the file has loaded, the lower box will be cleared. Press "E" for edit enteries.

This screen will be displayed: (filenames are for example only.)

TEXT EDIT TELCO 4A TALK ARCHIVER . . CONFIGURE	Edit Next Back Redo
--	------------------------------

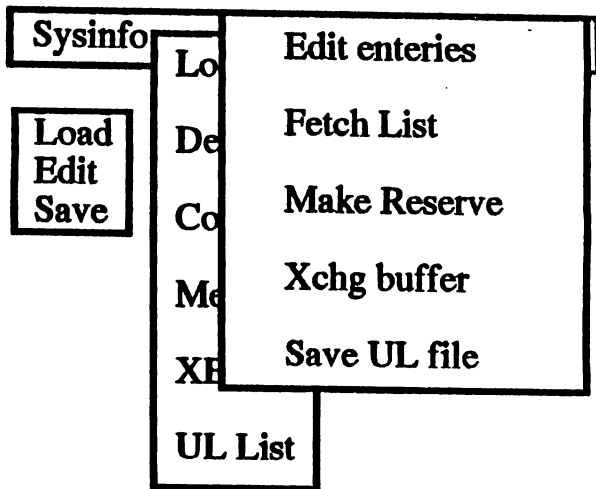
ED

This is pretty much the same as configuring the XB menu.

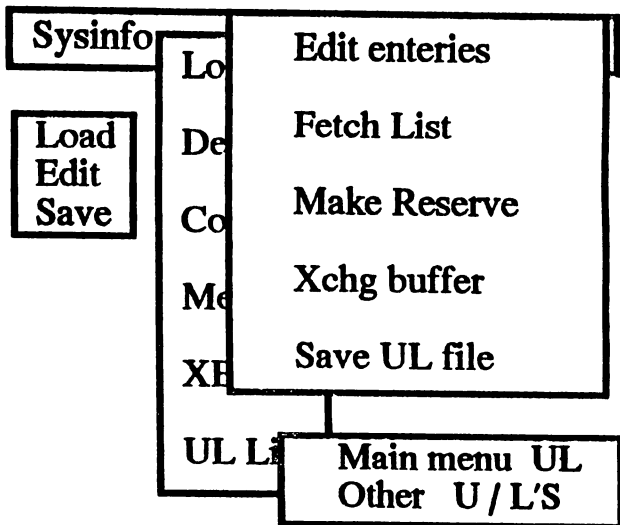
## CONFIGURING FUNNELWEB

You select the filename position to edit using the "N", "B" keys, or the arrow keys. Press "E" to edit, then follow the procedure for XB LIST as described earlier. When you are finished with all the program editing, press FCTN9 to exit.

This screen will reappear:



Now you have to save it back before you go to the next file to edit. Press "S" and this will be the next screen:



Select "M" for MAIN UL and edit the next prompt to

## CONFIGURING FUNNELWEB

reflect the file you loaded, "U1".

Now, after it is saved back to disk, select "F" and load the other UL file. ("U2") Do the same for each user list file, saving each back to disk before loading the next. When you are done, press FCTN9 until you have this screen:

Sysinfo	Quit	Install
---------	------	---------

Load
Edit
Save

Now press "S" to save it ALL back. Enter the device/SYSCON that you loaded it from and press <ENTER>.

After it is saved, the screen will clear to just this display:

Sysinfo	Quit	Install
---------	------	---------

Press "I" to INSTALL.

Even though you are done editing all the menus and user lists, you still have to INSTALL your configuration for future use. What it does is load the three various FUNNELWEB files into the VDP, one at a time, and write the changes to them, then save them back to disk for all future running. Press "L" for LOAD and this will be displayed:

## CONFIGURING FUNNELWEB

Sysinfo	Quit	Install
---------	------	---------

Load Edit S	LOAD - XB / XB II FW / UTIL1 others
-------------------	--

Enter File / Device DSK1.LOAD
----------------------------------

Enter Source Filename
-----------------------

Press <ENTER> on the device that holds the FUNNELWEB loadfile. This will read the file into memory. After it has been loaded, the display at the bottom of the screen will change to this:

Enter Target Filename
-----------------------

Press <ENTER> on the same device and filename to save it back. After it is saved, this will be displayed again:

Sysinfo	Quit	Install
---------	------	---------

Load Edit Save	LOAD - XB / XB II FW / UTIL1 others
----------------------	--

Press "F" for the "FW" file. The same screen as before will appear. Change the filename to "FW".

## CONFIGURING FUNNELWEB

Sysinfo	Quit	Install
Load Edit	LOAD - XB / XB II FW / UTIL1 others	
Enter File / Device DSK1.FW		
Enter Source Filename		

Hit <ENTER> to load the file, then again to save it back, just as you did for the file "LOAD". Now, when the next appears, that will look like the next illustration, press "F" again, only this time, change the filename to "UTIL1" and do the same as above to load and save it back.

Sysinfo	Quit	Install
Load Edit Save	LOAD - XB / XB II FW / UTIL1 others	

**THAT'S IT!!** You can now "Q"uit and all is done. To see the changes that you have made, you **MUST** exit the entire program, reload "LOAD" or "FW" to see the new menus. The changes were made **ONLY** to disk and **NOT** in memory. So turn your computer off, reload and check your configuration. If not everything works like you expected it to, re-enter "CONFIGURATION" and change things until they do. Anything that you do **NOT** edit will remain as it was prior to loading CONFIGURE. So you only have to edit what you need to edit.

Please note that FUNNELWEB is a "FAIRWARE" program, and you should send a donation to the authors for their work. I suggest a donation of \$20.00. (US funds) You should send it to Tony and Will McGovern at the address on the opening screen of FUNNELWEB. These authors have spent a considerable amount of time and effort to



## CONFIGURING FUNNELWEB

bring you this fine operating system, and their efforts should NOT go unrewarded. Donations for Shareware or Fairware programs helps to insure that talented authors, like the McGoverns, will continue to support the TI-99/4a and GENEVE 9640.

*Disclaimer: It should be noted that this booklet is supplied for the informational use of the user, and neither the author, nor the distributor assumes responsibility for any damage to the user's software or equipment as a result of these instructions. The user attempts the recommended procedures outlined in this book at his/her own risk.*

*All information included in this booklet, to the best of the knowledge of the author, is known to be correct at the time of printing. All information is offered in reference to, and was tested on, version 4.40.*

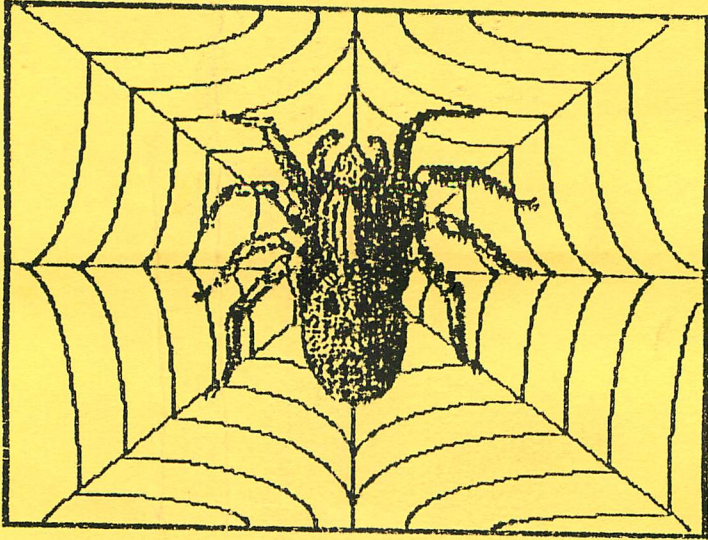
*These procedures were found to be effective on a TI-99/4a using a Mechatronics 80 column card, Horizon ramdisk and/or a Tandon hard drive using a TI disk controller, CorComp disk controller card and/or a Myarc Hard/Floppy Disk Controller. (HFDC) However, the author can not guarantee application of the instructions found in this booklet towards any previous or future releases of FUNNELWEB or on any equipment other than those stated above.*

System files necessary for minimal configuration are as follows:

C1	chara1 file for TEXT EDITOR
CF	part one of CONFIGURE
CG	part two of CONFIGURE
LOAD	LOAD containing XB menu
UTIL1	one of two main program segments
FW	second of two main program segments
DR	part one of DISKREVIEW
DS	part two of DISKREVIEW
EA	E/A loader
ED	part one of TEXT EDITOR
EE	part two of TEXT EDITOR
FO	part one of TEXT FORMATTER
FP	part two of TEXT FORMATTER
UL	USER LIST program
U1	user defined USER LIST
U2	user definer USER LIST
SYSCON	SYSTEM CONFIGURATION file

*With these files on your system disk, you will be able to do many of the BASIC operations that most require from FUNNELWEB. This is only a 'partial' list of the many system files that come with the program. These listed files will fit comfortably on a SS/SD disk.*

(c) Copyright 1993 Larry Tippet



The Spider's Guide to FUNNELWEB Configuration, by  
Larry Tippett, 5826 Buffalo St, Ny. 14132. Extra copies may  
be obtained from the author from the aforementioned address  
for a cost of \$3.50 plus .50 p/h

LARRY TIPPETT  
5826 BUFFALO ST. NY. 14132  
TEL: 716/833-1111 FAX: 716/833-1111