

# VAST NEWS

Monthly Newsletter of the VAST Computer U. G.

Volume 5 Number 6

June 17, 1989

## TI WORLD NEWS

Compiled from MICROpendium Magazine by Jim Ely

### TI-Forth for Geneve

McCann Software has announced the availability of the programming language *FORTH* for the Myarc Geneve 9640 computer. Users may use *FORTH* blocks in either file or sector mode and the MDOS version allows 44K of dictionary space. Included in the package of software is the source code and documentation of the new system calls for MDOS. Contact **McCann Software** at P.O. Box 34160, Omaha, NE 68134 for further information or to order. The price is \$15.

### World Wide User Group Data Base Available

Andi Wise, newsletter editor of the Eugene, Oregon, TI-99/4A User Group has compiled a data base of User Groups from around the world. It is written for the Creative Filing System data manager and is selling for \$5.00. The fee goes to support the

**HAPPY  
FATHERS  
DAY!**



Eugene TI-99/4A User Group and is available from Box 11313, Eugene, OR 97440.

### Checkbook Manager III Posts Higher Price

This fine checkbook manager program from W. Irving Crowley has had a \$2.00 price increase. The asking price is now \$12.00 and represents a significant upgrade in program performance. You can order directly from the author at Lost Canyon Road, Pine Level, AL 36065. The program, incidently, was reviewed in the April, 1989 MICROpendium.

### TI-99/4A Project Manual Compiled

The Chicago TI-99/4A User Group has put together a hardware project manual that has been compiled from articles appearing in various User Group Newsletters. It is available from the Group at a cost of \$6.00 + \$4.00 postage and handling(?) [This is either a mis-print or the group is really making money on postage or the manual is sooooo thick it really does cost that much to ship! -Ed.] You can order from the group at P.O. Box 578341, Chicago, IL 60657.

### Hard Disk Sector Editor Available

Randall W. Moore, 3931 Navaho Drive, North Highlands, CA 95660 has released a sector editor program called *Sector One* which is designed to be used with hard drives. When booted, the program looks for any HD's you might have attached. You can then use it like any sector editor you may be familiar with (Disko, D-Patch, GBS, Disk Utilities etc.) but only with your hard drive. You can do such things as printing a sector to your printer, changing or writing a sector, just reading a sector or moving sectors. You can also do string searches for particular data.

The program is quite user friendly and comes with documentation albeit somewhat "skimpy." The price is \$10 and for what it can do it is extremely reasonable. Order directly from the author.

### Inside Information...

Item	Page
V A S T Information	2
V A S T Minutes	3
Editor's Desk	4
Computer Tutor	5
Printer Characters	6
Using TI Artist	7
Views and Reviews	9

# VAST USER GROUP INFORMATION

The **VAST USERS GROUP** is a support group for Home Computer users. We primarily support the TI-99/4A Home Computer and compatibles, but all computer users are welcome. We will be meeting at the Pyle Adult Recreation Center in Tempe on the 3rd Saturday of this month (June 17). In coming months, the meetings will be scattered between the second and third Saturdays. A two month calendar showing the meeting dates for July and August is included on the Editor's page so you will have some idea of when the next meetings will be. The meetings will start at 10:00 AM and continue until 11:00 AM with socializing starting at 9:00 AM. Please see the address page for additional meeting information. The yearly membership fee is \$15.00 and now includes the newsletter mailed to your door!

All meetings are open and anyone may attend. Only dues paying members may vote in elections and obtain programs from the Users' Group Library.

\*\*\*\*\*

## CURRENT OFFICERS

### President

Mike Grogan.....272-4315

### Vice-President

Bill Wedmore.....998-1821

### Secretary

Mike Marfisi.....491-1552

### Treasurer

Mike Marfisi.....491-1552

### User Group Librarian

Stephanie Bannon..841-5058

### Newsletter Editor

Jim Ely.....921-3375

### BBS SysOp

Sue Miller.....375-8456

\*\*\*\*\*

The date that appears in the upper right hand corner of your mailing label is your membership expiration date. Address renewals to the return address on page 10. Newsletter *ONLY* membership is available for \$12.00/year, First Class Mail.

The User Group's BBS is in operation 24 hours a day. Contact it at (602) 437-4335. There are 3 message bases, a TI specific download section, and a lot of interesting conversation and information available here so why not give it a try.

Deadline for submission of articles or advertising for the Newsletter is the last Saturday of every month. Articles may be submitted in any form, however, the preferred method is by phone transfer directly to the Editor.

\*\*\*\*\*

Advertising rates are as follows:

### COMMERCIAL:

Full Page

\$10.00

Half Page

\$7.00

Quarter Page

\$4.00

### PERSONAL:

Four lines,

30 Characters/line

\$1.00

\$.20 per line over four.

All rates are for *ONE* issue only!

\*\*\*\*\*

Programs are available from the **USERS' GROUP LIBRARY** at the following rates:

SS/SD Disk \$2.00

DS/SD Disk \$4.00

If copying of documentation is required, it will be at the rate of \$.10 per page. If the User Group supplies the disk, please add \$1.00 to the above charges. An exchange program for free programs is also in effect. Please contact the librarian for further information. A complete list of what is in the library is available on 2 disks free of charge if you supply the disks or for \$1.00 per disk if the User Group supplies the disks.

**DISCLAIMER:** Information in this newsletter is gathered from other user group newsletters from around the world and original articles by members of our user group. The information is believed to be correct and accurate as published. Where possible, original sources and authors are stated. Errors should be brought to the attention of the editor of this newsletter. This user group is not responsible for programs and construction projects tried by its members or others. **YOU** try them at your **own risk**. Permission is hereby granted to other user groups to republish articles appearing in the *VAST News*.

# THE SECRETARY'S SLATE

## MINUTES

VAST USER GROUP  
MAY 20, 1989

The May Meeting of the VAST USER GROUP was held on Saturday May 20, 1989 at the Pyle Adult Recreation Center in Tempe. The meeting was called to order by president Mike Grogan at 10:04AM.

The minutes of the April meeting were accepted as published in the May edition of the VAST News.

Earl Bonneau, reporting for the Library Committee, said the the library has as yet not been turned over to Stephanie Bannon. Stephanie was on vacation and did not attend the meeting. Earl will get together with her when she returns.

The Program Committee did not meet this month so there was no report.

Jim Ely had announced in the Newsletter that he would be unable to continue operating the club BBS beyond the next 30 days. Two of our members, Jack Workman and Sue Miller indicated that they would be interested in operating it. After much discussion, it was agreed that Sue would become the Sysop of the VAST BBS. She kindly agreed to absorb the monthly charge for maintaining a central Phoenix number. Sue will make arrangements for the move and get together with Jim.

There being no further business, the meeting was adjourned at about 11:00 am.

Dan Shell presented a demo comparing TI BASE and FIRST BASE, two of the newest and best data bases for the TI.

Respectfully submitted,  
Mike Marfisi, Secretary,  
VAST User Group

This newsletter PRINTED by

*Ely Ink Printing*

Jim Ely  
Owner

Fry's South Point Plaza • 2700 W. Baseline Rd.  
Suite 131

Tempe, AZ 85283 — (602) 431-8228

in consideration for membership dues.

## COMINGS AND GOINGS

We had no new members join us this month but we did have several renewals for the coming year. Thanks to the following members for their continued support:

Leo Baker  
John Cole  
Bill Lage  
Mike Marfisi  
Gloria Randle  
Ralph Rees  
Tom Sharp

We are still waiting to hear from several folks whose membership has expired. We have not dropped them yet, but...How about it...

Stephanie Bannon \$10.00  
Dave Gray \$10.00  
Terry Naddy \$10.00  
Harold Thomas \$10.00

The following members expired in May. May they rest in peace! No, just kidding....

John Clanton \$8.75  
James Cronk \$8.75  
Rene Le Blanc \$5.75  
Robert Peterson \$8.75  
Ike Van Kampen \$5.75  
Gayle Zickefoose \$8.75

And finally, here is the list of those due to renew in June and their renewal cost:

Erik Anderson \$5.25  
Gerry Kennedy \$7.50  
Hazel & Wallace Knight \$8.25  
Bobby Mc Cray \$5.25  
Fred Ruppert \$5.25

In case you are wondering about the different totals due for the same month, the newsletter subscription is included in the total and some members have odd newsletter expiration dates.

This report prepared by Mike Marfisi, Treasurer.

# From The Editor's Desk

Happy Father's Day to all you dads out there!

## VAST BBS Changes Phone Number

I guess the big local news is the **VAST BBS** changing phone numbers. The **NEW** number is **242-9868** so if you have been trying to call up your favorite < cough > < choke > local board and not getting an answer, that could be the reason why. Sue Miller is the new SysOp and the change took place early this week. I have enjoyed running the BBS for the past several years, as a matter of fact, since the group first decided to put a BBS up. It has sure come a long way from the system we started with. I hope Sue enjoys running the board for you folks as I have.

## Meeting Dates Confirmed

The meetings for the next year have been approved by the Pyle Adult Recreation Center in Tempe. As we requested, the meetings for this next year will be on the **SECOND** Saturday of every month **EXCEPT** January, 1990 which will be on the **FIRST** Saturday. As usual, I will publish a 2 month calendar in the newsletter, as below, so you will know when the meetings are going to be. The facility has reserved the time period from 9 a.m. to 12 noon for **ALL** meetings this next year and as usual, there is **NO** charge for using the meeting room.

JULY 1989						
SUN	MON	TUE	WED	THR	FRI	SAT
						1
2	3	4	5	6	7	8
9	10	11	12	13	14	15
16	17	18	19	20	21	22
23	24	25	26	27	28	29
30	31					

AUGUST 1989						
SUN	MON	TUE	WED	THR	FRI	SAT
		1	2	3	4	5
6	7	8	9	10	11	12
13	14	15	16	17	18	19
20	21	22	23	24	25	26
27	28	29	30	31		

## Ely Ink Printing is up and running!

Finally, after all the delays and city inspections, my print shop is **NOW OPEN**. I am located in the Fry's South Point Plaza at the corner of 48th St. and Baseline in Tempe. The suite number is 131 and faces directly on to Baseline Road. I'm real easy to find and I expect to see some of you come and visit and take a look-see. As you may have noticed, I **PRINTED** this issue of the newsletter. You may see some 2-color printing in future issues, too. I have reproduced my business card on page 3 of this issue.

We haven't had a full page ad in our newsletter in quite some time, as a matter of fact, not since the first few issues back 4 years ago. The rates are extremely reasonable, I guess it's just nobody wants to advertise. Except this month and next month!! **Asgard Software** sent me camera ready artwork for the ad you see on page 8 of this issue. Is this a promise of things to come? I sure hope it is. Hope I did up the ad to Asgard's expectations.

Are you interested in placing an ad in the **VAST NEWS**? See the rates on page 2 of this issue.

That's about it for this month. See you at the meeting on the 17th of June.

Jim Ely, Editor



# BUGS!

As closely as I tried to watch everything in last month's newsletter, one thing did slip by. Most of you had your issue corrected and probably didn't even notice the correction. In the **TINYGRAM** on page 7, **Tiny Lotto**, line 6 was incorrect as it was published. Here is the line as it should have appeared:

```
6 F=0 :: FOR K=1 TO U :: IF
N(K) < N(K+1) THEN 8
```

If you bought the **Disk Of The Month** last month, the program was on it and was correct.

Sorry for the inconvenience. Jim

# COMPUTER TUTOR

## THE ELEMENTS OF BASIC

by Dave Howell

(Courtesy Erie 99er User Group Newsletter)

- Part 22 -

### CALL SOUND - Part 2

In last month's installment, using CALL SOUND to produce one musical tone or one noise was explored. Actually, a single CALL SOUND statement can be used to generate up to 3 tones plus one noise simultaneously. The format looks like this:

```
CALL SOUND(duration, tone1, vol1, tone2, vol2, tone3, vol3, noise, vol)
```

The duration or time applies to all tones and noises in the statement followed by each tone and its volume. The following statements illustrate how the CALL SOUND statement is used for 1, 2 and 3 sounds respectively:

```
CALL SOUND(1000, 262, 1)
CALL SOUND(1000, 262, 1, 330, 1)
CALL SOUND(1000, 262, 1, 330, 1, 3921)
```

Try them on your computer

Remember, the duration can range from 1 millisecond to 4250 milliseconds (.001 of a second to 4.25 Seconds). The 1000 is about 1 second. 4000 is about 4 seconds. Remember also, that the volume can range from 0 (loudest) to 30 (softest). The tones (or frequencies) can start at 110 and continue beyond 40000. Most TI handbooks contain a table of the more popular musical frequencies. The CALL SOUND statement permits the quick programming of notes and musical chords. For example, a statement that would play the following notes simultaneously,

Middle C for 2.5 seconds at middle volume  
The tone of A below middle C at low volume  
The tone of A above middle C at low volume,  
would look like this:

```
CALL SOUND(2500, 262, 15, 220, 25, 440, 25)
```

If another sound or chord is to follow immediately after the first is finished, then a second CALL SOUND statement is needed.

```
10 CALL SOUND(4000, 262, 15, 220, 10, 440, 10)
20 CALL SOUND(1000, 440, 2, 659, 2, 880, 2)
```

The computer will wait until the first sound(s) are completed before playing the next sound(s). The TI-99/4A can do other things while it is playing a tone. In the program below, the computer is being asked to play the chord in line 10 as it is counting from one to ten. This feature of the TI-99/4A sets the stage for creating programs that causes motion on the screen while the sound is playing. Most other computers cannot easily do this.

```
10 CALL SOUND(4000, 262, 5, 220, 10, 440, 10)
20 FOR I=1 TO 10
30 PRINT I
40 NEXT I
50 CALL SOUND(1000, 440, 2, 659, 2, 880, 2)
```

Notice, also, that the second chord, in line 50 above, will not be heard until the first chord is finished even though the computer has finished counting from 1 to 10. To correct this, the program can be changed to allow the second chord to cut off the first chord when the computer finishes counting by simply placing a minus sign in front of the duration number in line 50 like this:

```
50 CALL SOUND(-1000, 440, 2, 659, 2, 880, 2)
```

**NOISE.** It was mentioned earlier that "noise" can be mixed with tones. To make noise, choose a tone that is one of these negative numbers:

- 1 periodic noise type 1
- 2 periodic noise type 2
- 3 periodic noise type 3
- 4 periodic noise mixed with tone 3
- 5 "white" noise type 1
- 6 "white" noise type 2
- 7 "white" noise type 3
- 8 "white" noise mixed with tone 3

To review the noises, try this program. As the program plays, follow each noise with its description listed above.

```
10 FOR I=-1 TO -8 STEP -1
```

*Continued on page 6 >>>*

*Computer Tutor*  
Continued from page 5...

```
20 CALL SOUND(4000,I,0)
30 NEXT I
```

As indicated above, noise -4 and -8 are the ones to be used in combination with one, two, or three other sounds. Change line 20 to read as follows to see how this works.

```
20 CALL SOUND(4000,500,10,60
0,10,700,10,I,0)
```

Notice that the noise is "I" in line 20. The noise and its volume (0) is last just as it was explained earlier in the standard format. Actually, the noise and its volume can be located in any tone-volume position. Experiment with the various combinations of tones, noises and volumes to see the infinite variety of different sounds possible on the TI-99/4A. The following program will help.

```
10 REM TONE GENERATOR
20 INPUT "ENTER DURATION(1 T
0 4250). 1000 IS 1 SECOND":
D
30 PRINT
40 INPUT "ENTER TONE (110 TO
44733 BUT PEOPLE CAN'T HEAR
MUCH ABOVE 11000) OR ENTER
NOISE (-1 TO -8)":T
50 PRINT
60 INPUT "ENTER VOLUME (0 TO
30). ZERO IS LOUDEST":V
70 CALL SOUND(D,T,V)
80 GOTO 20
90 END
```

Tune in next month for more sounds including noises and music!

d.h.

*The Vast User Group*  
Bulletin Board System

**NEW PHONE NUMBER!**

**(602) 242-9868**

24 Hours a day - 7 days a week

File sections for Geneve, TI-99/4A & IBM

**New SysOp!**

*Sue Miller*

## ANOTHER 96 CHARACTERS?

From the CHARLOTTE TI 99 Users Group Newsletter

By Jim Folz

(Reprinted from the *Data Bus*, Newsletter of the Delaware Valley Users Group)

Many Gemini printer users don't realize that they can access another 96 characters in their printers. The 99/4A uses seven data bits to send characters to be printed. The additional characters in the Gemini printer (and some others) become active when the eighth bit is turned on. Gemini engineers have provided an escape sequence that turns the eighth bit on and off "manually." In TI Writer's Formatter, .TL 60:27,62 will make the eighth bit go on when a > is found in the text. If you also put in a .TL 62:27,60, then < will turn the eighth bit off. (Check your printer to make sure your codes are not different.) [Editor's Note: Many users will find that it is easier to use the CTRL-U sequence to access these codes, when working from EDITOR, so as not to have to use the FORMATTER. In that case, the sequence would be: CTRL-U,FCTN-R,CTRL-U,>, to turn the bit on, and CTRL-U,FCTN-R,CTRL-U,<, to turn it off.]

When the eighth bit is turned on, the characters change as follows: The eighth bit simply adds 128 to the ASC of the character you type. Consult your printer manual for characters you want to print, subtract 128, and use the ASCII character of the resulting number.

For a complete print out, enter and RUN the following program by Robert Simms.

```
100 REM PRINT CHARS 128+
105 OPEN #1:"PIO" :: PRINT #
1:CHR$(15)
110 FOR X=32 TO 80 :: PRINT
#1:"ASCII ";X;"is now ASCII"
;X+128;" : ";CHR$(X+128);
120 PRINT #1:TAB(35);"ASCII"
;X+48;"is now ASCII";X+48+12
8;" : ";CHR$(X+48+128)
130 NEXT X
140 CLOSE #1 :: END
```

j.f.

# TI ARTIST...for the beginner

## PART 1

by Don McCalla - Evelyn Pacinda

(From the *PUG Peripheral*,  
Newsletter of the Pittsburg User Group)

If you are slipping TI Artist into disk drive #1 for the first time, you will probably want to do more than just draw squiggles on the monitor screen. Thank God TI Artist is XB autoloading! Just press ENTER at the intro screen for the main menu. You will most likely want to PRINT something productive that says, "I DID Something!" To do that you will need to know the difference between Fonts, Slides, Instances and Pictures.

A Font is usually an enhanced character set which is accessed by choosing #2 at the Main Menu - Enhancements. Slides and instances are also accessed here, using the same option. Slides are usually portions of your working picture, not to be confused with a slide show. You define the slide. We'll discuss slides later (when we figure them out well enough). Instances are pre-made pictures which vary in size. There are plenty of them on the market. We'll deal with them shortly. Pictures are pre-made pictures which are saved in 2 portions; they are actually 2 programs which end in " C" for the color portion and " P" for the picture portion. Think of the Picture as a backdrop for your smaller figures, which are Instances. Now to the nitty-gritty.

To load Fonts, use option #2 (Enhancements) at the Main Menu. You will next see a set of boxes with electronic squiggles bordering the screen - these are Slides. Ignore these for the moment. Go to Alpha Numeric Entry, using Joystick #1 or by typing the letter "A". The next menu requires an input "1" to load character Font. Pressing "1" will cause the cursor to move to the bottom of the screen, at: Load Filename DSK2. Input the filename wanted (for fonts, it is a D/V 80 file which ends in " F". Ignore the " F" when typing in the filename. DSK2 is accessed, the font set is loaded into memory, and you must press "2" for "Type Text on Screen". The next prompt is "Should characters be Outlined?" "N" is the default, press "Y" if you just want the outline of the character on the screen. Press or leave "N" if you want the whole letter to be present. If you're only using one drive, or if you don't have an extra disk of character fonts, you'll have to access DSK1.

You can only enter up to one line of text at a time, sometimes even less if you have loaded a large character font. You will then see a blank screen with a flashing box which is self-centered - this is your text!

Press "T" to Test the placement of your text. It is moveable using the arrow keys or Joystick #1. Be careful using the Joystick because the fire button, or ENTER on the keyboard, will set your text in place. The blinking box re-appears so that you may re-enter the same text a number of times.

To enter another text string, use the space bar and reload through the Alpha Numeric screen. At the Enhancements screen you can hit the space bar to see your working picture. You can access your picture in this manner thru most of the menu screens, even after hitting FCTN Quit to return to the TI Artist Main Menu (Boot) screen.

Now that we have text, we can load something to surround it. To load an Instance, access the Slides box (letter "S" or move the cursor to the spot using Joystick #1). The Slides menu has 7 options; #6 loads an Instance. An Instance is a D/V 80 file ending in " I". Add the disk number and filename at the bottom of the screen - don't add the " I". Beware: if you misspell the filename the screen says "Device Error! Task Aborted." It's not the computer, just the user! Once the Instance is obtained, a blinking box appears on the screen the approximate size of the loaded Instance. Joystick #1 or the arrow keys will move the box around the screen to the chosen spot. Again, "T" will test placement and Fire or ENTER will lock in place. Unlike the Fonts, an Instance must be reloaded each time it is used. It can be duplicated using other options which we will discuss in later segments.

To Print your picture, press FCTN Quit to return to the Main Boot menu. Option #1 takes you to the TI Artist Function screen (the pretty one with all the little boxes and letters). Use the Joystick or press "C" for Hard Copy. Next, choose the appropriate printer type. Epson works with the Star Printers. At the prompt enter the printer device name: PIO.CR.LF is the default. Density Factor controls width of picture, not just darkness of print, so try "1", which is the default, first. Magnification factor controls the size of the picture, with "1" being the default. Increasing the number increases the size of the picture. Line spacing controls the height of the picture, as in vertical characters per inch. "8" is the default, so try that first. After you get your first picture, play around with the print options. Combinations can be very interesting, although not necessarily desirable!

That's all for this month. Next time we'll delve into Slides, and explain some of the Function menu options.

d.m., e.p.

# Page Pro 99

## The Page-Making Software for your TI-99/4A or Myarc Geneve 9640

---

■ **Page Pro 99** is a remarkable program that does one thing and one thing very well - it lets you compose a 66 line page full of text, graphics and lines quickly and easily. There are no formatters, no cryptic commands or functions - just a "what-you-is-what-you-get" screen, and the ability to paste in pictures and type text.

■ **Page Pro 99** will allow you to put up to 28 pictures of any size or shape anywhere on the screen. It will let you type text in a complete large font and a small font of your choice (both with full upper and lower case, along with numbers and symbols), and draw lines anywhere you need them. You can easily create forms, advertisements, flyers, maps, graphs and charts, and even labels, certificates, signs, reports and newsletters. After you've created your page, you can print it out on your Epson or compatible printer in any of three densities, from "rough draft" up to reproduction-quality.

■ **Page Pro 99** has many features to make producing your page as painless as possible. You can literally type in any direction (up, down, left or right), you have a host of text editing functions (insert/delete characters and lines), you can window around the page with ease using the standard TI-Writer keys, you can load in pictures and get rid of them at your option, you can read in a text file and paste it on the page, save a Page-Pro page as a text file, load in new fonts or line patterns, and more.

■ **Page Pro 99** also comes with a collection of artwork and fonts, as well as utilities to convert TI-Artist fonts and instances into Page Pro 99 format, as well as make 2 column justified text for use in Page Pro 99 from your TI-Writer files.

■ **We don't call** Page Pro 99 a "desktop publishing program", but it lets you do more, more easily than many programs that claim to be. Page Pro 99 is so capable we did the manual entirely with the program, TI-Writer and standard TI-Artist fonts and instances.

■ **Page Pro 99** requires 32K, disk and the Extended BASIC, TI-Writer or the Editor/Assembler module, and an Epson or compatible printer (Star, Panasonic, etc.). Some utilities require Extended BASIC. Complete documentation included

**\$24.95 &** Canadian purchasers  
please add \$.50 more

**\$.75 S&H** Europe/Australia/  
Asia, \$4.00 for  
Air Mail Delivery

*Visa and Mastercard Accepted*

**Asgard Software**

**P.O. Box 10306  
Rockville, MD 20850  
(703)255-3085**



## VIEWS AND REVIEW

---

### AUDIO CASSETTE LOG UTILITY

Reviewed by Mike Marfisi

I have a very large collection of audio cassettes including a few hundred music tapes and over 700 old radio programs. That is a lot of cassettes. Most of those cassettes are custom made, ie., they don't have labels listing title or contents. A real hassle! A few years ago, I found a neat little program from Harry Brashear of the Western NY 99ers that solved my problem to a T. The gem is called AUDIO CASSETTE LOG UTILITY. Its main function is to produce a label that can be inserted into a standard cassette box that lists the tape title, its contents and the name of the tape's owner. The program runs in Extended BASIC.

When booted you are asked if you want to enter direct information or retrieve information you had entered earlier. In other words the program has the ability to save labels for later use.

Assuming that you wish to create a new label, you are next asked to enter your name. This is used to print a line stating that the tape is from the library of...

Next you are asked if you want 1 or 2 sides of the tape listed. Now comes the title and artist for one or both sides depending on how you answerd the last question. You may now input up to 18 titles for each side of the tape. If you make an error, have no fear. By hitting enter on a blank line the input will return to the last line entered and you can type over any errors. If you enter less than 18 titles on a side, type "end" and the program will go to the next step. "End" will not appear on the printout.

The next question asks if you want to file or print the label. If you choose file, you are led through a save file routine. If you choose print, the program will produce a great little label that, when folded, will fit inside a standard cassette box thus ending the "boy I sure wish I knew what is on this tape" puzzle.

Get this program on the June edition of our Disk of the Month.

m.m.

## Special Father's Day Program

---

Taken from the May, 1989 Newsletter of the St. Louis 99ERS,  
*The Computer Bridge*

Author was not Stated

This nifty little program, written in BASIC, will print Special Father's Day gift wrapping paper to your Epson compatible printer.

### \* FATHER'S DAY GIFT WRAP \*

```

100 REM SAVE DSK1.DAD/WRAP
110 REM CHANGE LINE 310 TO Y
OUR PRINTER STATEMENT (EX:"P
IO")
120 CALL CLEAR
130 PRINT : "          MAKE YOUR
OWN "
140 PRINT " WRAPPING PAPER
PROGRAM": :
150 PRINT :TAB(7);"*****
*****": :
160 PRINT
170 PRINT " PRESS<ENTER>
AFTER":TAB(8);"EACH REPLY.":
:
180 PRINT :TAB(7);"*****
*****": :
190 PRINT
200 PRINT "GIFT IS FROM?";
210 INPUT FR$
220 PRINT "GIFT IS FOR?";
230 INPUT FO$
240 CALL CLEAR
250 PRINT "WHEN YOUR PRINTER
IS READY,"
260 PRINT "PRESS ANY KEY TO
START PRINTING."
270 CALL KEY(0,KEY,STATUS)
280 IF STATUS=0 THEN 270
290 CALL CLEAR
300 PRINT "TO STOP PRINTING,
HOLD DOWN ANY KEY."
310 OPEN #1:"PIO"
320 PRINT #1:CHR$(27);"1";
330 FOR A=1 TO 8
340 READ T$(A)
350 NEXT A

```

Continued on page 10 > > >

Father's Day Gift Wrap  
Continued from page 9...

```

360 FOR P=1 TO 8
370 PRINT #1:T$(P);T$(P);T$(
P);T$(P);T$(P);T$(P)
380 GOSUB 430
390 NEXT P
400 PRINT #1:TAB(20);"TO ";F
O$;" , HAPPY FATHER'S DAY FRO
M ";FR$
410 PRINT #1:
420 GOTO 360

```

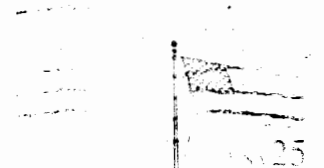
```

430 CALL KEY(0,KEY,STATUS)
440 IF STATUS=0 THEN 460
450 STOP
460 RETURN
470 DATA " 0----- "
480 DATA " /0#####/\ "
490 DATA " /#####/--\ "
500 DATA " ----- "
510 DATA " [=====]= ] "
520 DATA " [=O=O=]=O= ] "
530 DATA " [=====]=O= ] "
540 DATA " "

```

# HAPPY FATHER'S DAY!

VAST News  
c/o 2120 S. Los Feliz Dr.  
Tempe, AZ 85282-2905



First Class Mail

## MEETING NOTICE!

**June 17, 1989**

Pyle Adult Recreation Center  
655 E. Southern Avenue  
- Corner Rural Rd. and Southern Ave. -  
Tempe, AZ

TO:

RALPH REES  
18815 N. 13TH AVE.  
PHOENIX, AZ 85027

09/89

Open - 9 a.m. — Meeting - 10 a.m.  
Ralph Rees is bringing a plotter for the Program  
Demonstration this meeting.

**ALL ARE WELCOME!**

First Class Mail