

TI*MES

Volume 2, Number 4. Summer Issue June 2015



Special Issue of TI*MES for the 30th European TI Treffen

This TI*MES will inform you about the meeting in Crewe, where the TI users of Europe meet to talk about the little home computer. After 29 meetings in different places all over Europe we will come together in the Railway town of Crewe. The program of the Treffen will make it a computer meeting and a social event

You will find here information about the program of the Treffen, where we lodge, where we eat and how to get there. There is also information about the Historic city of Nantwich, five miles from our Hotel.

TI*MES Magazine
A Twice A Year Publication of the T.I.U.G.U.K.
(Texas Instruments User Group Of The United Kingdom)

IN THIS ISSUE

PAGE	ARTICLE	AUTHOR
3	<i>....from the editor.....</i>	<i>David Caine</i>
4	<i>2015 AGM Newark review</i>	<i>Richard Twyning</i>
9	<i>Group Finances</i>	<i>Richard Twyning</i>
10	<i>Module Library (up to date) plus Finances</i>	<i>Francesco Lama</i>
13	<i>Sabre Wolf Module Review</i>	<i>Berry Harmsen</i>
15	<i>TV/Video units for the TI. Review</i>	<i>David Caine</i>
21	<i>Birkenau 2015 Fair Review</i>	<i>Berry Harmsen</i>
23	<i>Rob Templeman Platt Awards</i>	<i>Berry Harmsen</i>
24	<i>Myarc HFDC Review</i>	<i>David Caine</i>
30	<i>Jim Fetzner 2mb Cartridges</i>	<i>Jim Fetzner</i>
31	<i>European Treff Anniversary List</i>	<i>Berry Harmsen</i>
32	<i>Calendar Maker 99 Software Review</i>	<i>David Caine</i>
35	<i>30th European Treff Event in UK.</i>	<i>Berry Harmsen and David Caine</i>
38	HOTEL BOOKING INFORMATION	<i>David Caine</i>
39	<i>Crewe Arms History</i>	<i>Berry Harmsen</i>
41	<i>Crewe and Nantwich Town Review</i>	<i>Wikipedia</i>
45	<i>Restaurants in Crewe and Nantwich</i>	<i>Berry Harmsen</i>
47	<i>Membership Details</i>	<i>David Caine</i>

Layout and Editorial of this issue by David Caine and Berry Harmsen
 The last day for sending articles for TI*MES volume 2, number 5 will be November 20th. 2015. This next issue of TI*MES magazine will appear in mid December 2015.

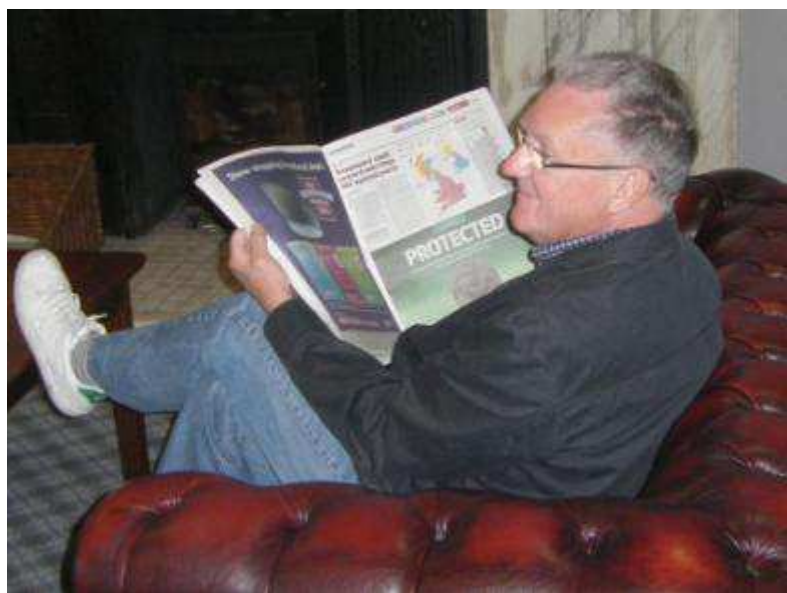


WE WISH ALL USERS A BEAUTIFUL SUMMER

.....from the editor.....

Dear TIUGUK members and other TI users,

This is my fourth addition of TI*MES magazine. After a long period without a newsletter I restarted to collect information about our computer. Even after being a member of our group for about thirty years for me this was a very learning experience, I learned more about Texas Instruments computers, and came into contact with many TI users from all over the world. I now use my PC in a totally different way and I am still learning. I didn't realize that there was so much involved in the production of a magazine and the support of a group of computer users. This year I am also responsible for the organization of the 30th European



TI Treffen. During the last years Treffen in Vienna we proposed to organize the next Treffen in the UK. It was decided to have the meeting in my hometown of Crewe in Cheshire. My first action was to find an appropriate Hotel with the facilities that we needed and a meeting hall, and all for the right price. We had the best

offer from the Best Western Crewe Arms Hotel. This Hotel has the right facilities that we need and is conveniently situated.

I certainly hope that the meeting in Crewe will be a big success with many users and a lot of new computer items. At this moment it looks very promising for a large turnout. There is a revival in our TI hobby..new software made by programmers such as Fred Kaal and Mark Wills, new hardware developed by Gary Smith and Jim Fetzner and new Internet sites maintained by Chris Schneider and Rich Polivka. The future for the TI hobby looks bright. I will be at the Treffen. You too?????...

David Caine

Richard Twyning 2015 AGM. Summer article

I didn't expect at first to be going to the Newark meeting and I therefore certainly didn't expect to be writing this article. I had become disillusioned with a lot of things, including the group, but Newark helped to renew some enthusiasm.

Friday I was excited and looking forward to the trip as I set off on Friday morning. I decided to travel much lighter than I had before. I took a little old laptop I got free from work, my Power Monkey Solar charger, and a new little toy that I call my mobile server. Other than that it was just my essentials, including my sleeping bag.

As you would have read in the previous magazine, for this AGM we were doing a snail and taking the venue with us, namely Trevor's caravan and awning!



I headed to Trevor's first and we would travel together with his caravan. After a compulsory coffee and a bit of terminal time we made sure everything was aboard the caravan before hitching it up and heading to Newark. It seemed to take no time at all to get set up. I was in charge of lowering the legs of the caravan while Trevor was sorting other stuff. Then we both put the awning up together. This is where we would have our meeting, and once it was up, it was surprisingly cosy, despite being a bit breezy outside.

Once we had a venue we had to go and do some shopping for snacks and breakfast for two days and of course the compulsory level of alcohol.

While we were in Newark we had the call from David Caine that he and Berry had arrived by train and we picked them up and took them to their hotel to drop off their luggage.



This of course meant having a further compulsory pint in the hotel bar, which apparently stayed open 24 hours.

Then we headed back to the campsite for the evening and I think Berry was impressed with the setup, despite being initially sceptical about us holding the meeting on a campsite. Trevor's

generator hardly used any fuel while we were there and it was hardly having to work at all running the computers. The only time it revved louder was when Trevor put the kettle on!

On Friday evening we decided to order a takeaway and ordered from a fish and chip shop that delivered to the site. The fish was amazing and the

chips were ok, but despite paying for mushy peas, thanks to the bimbo that

took the order, they didn't arrive! We spent a good few hours putting the world to rights before we ordered a taxi for Berry and David and we walked them to the main entrance to meet the car.



Saturday After a good night sleep and very welcome “train smash” breakfast of egg, bacon, sausages, beans and mushrooms, Trevor went to pick up David and Berry.

David had brought his “portable” TI kit and demonstrated a new cartridge that has hundreds of games on it. I spent a lot of the time helping Trevor trying to set up a TI emulator that also has hundreds of game cartridges. I forget the name of it now, but the problem was that we copied it from David's laptop and it required a setup program to write certain DLL's into System folders. Luckily I managed to get just enough data signal to download the setup program for it which did help a bit, but I still don't think it was working 100%.



Francesco and Claire arrived after lunch and we held the committee meeting mid-afternoon and during the meeting we all decided to carry on in our positions for another year, and we decided to set the group membership to £9 a year. I will let David fit in the

spreadsheet of the balance where he

Can, and also I'll leave it up to him which photos to include as they're all shared on our public folder that I share from my Google Drive.

During the meeting I phoned Mark Wills and he phoned me back to say

he would attend the Treff and try and contact Stephen Shaw to see if he was willing to attend the event. It would be amazing if they can both attend. We need all the support we can get as we will get the meeting room for free if there are enough guests in the hotel attending the meeting.

We closed the committee meeting after some discussion about the Treff and began to get ready for the meal in the evening. David decided to pack his TI stuff away and



just leave his laptop for use on the Sunday. Francesco and Claire went back to their bed and breakfast to get ready and we took David and Berry back to their hotel. David took his case inside whilst myself, Trevor and Berry waited in the car.

Trevor had booked a table at Zizzi's which is an Italian restaurant in a building called the Ossington which is quite prominent as you drive into Newark, opposite Newark castle. It looks much older, but was built in 1881 by Viscountess Ossington as a charity coffee house to generate funds for Newark hospital. When it was originally built it even had a bowling alley!

I must say I really enjoyed the meal. It was the most amazing pizza I've ever tasted. I wish I lived a little bit closer to Newark so I could justify going back again!



After the meal we took Berry and David back to their hotel before heading back to the camp site. Luckily the camp site issues you with a key card for a £5 deposit that

allows you to swipe in and out with an automatic barrier.

Trevor and I had a wee dram of whiskey whilst finishing the evening by watching Britain's Got Talent repeated on ITV2!

Sunday morning started as usual with a "train smash" and I did the pots while Trevor went and picked up David and Berry. Sunday was a continuation of demonstrations and trying to get Trevor's TI emulator set up. As I had mentioned earlier, I had a new toy which I called my mobile server. It's not far

from the truth. It's amazing! It's a Kingston Mobile Lite which is a small device not much bigger or heavier than a pack of cards. It is literally a server. It is Network Attached Storage (NAS) which generates its own Wireless hot spot. You can also set it up to connect to a wireless hot spot. The reason for this is that you obviously need to connect your phone or tablet to it, but you still need to receive internet data.



Therefore it passes data through from your router to your phone. It also has a normal network Ethernet socket in case you have a network cable and no wireless internet available.

This could be useful in a hotel room in which you have to pay extra for a wireless key. There can very often be an open wired connection available. You just plug in to the Mobile Lite and it shares the web connection wirelessly. Most importantly it allows you to connect multiple devices to use it has a central hub of data. This is what I was doing on Sunday.

The Mobile Lite really only costs £25, but I paid extra and got the optional 64 Gig SD card. That makes it a self contained portable drive. Not only does it have the SD slot, but it also has a full sized USB socket. It was simply a matter of plugging in Berry's memory stick and being able to use a file manger on my phone to copy the photos onto the SD card. It's obviously



portable, so it's obviously rechargeable. It charges via a Micro USB socket. If

You plug it into a PC etc. without powering it on, it defaults to being a card reader. However, both the SD card plugged into the device and the USB

device become visible in the PC's file system. I also made a point of testing that it will power a small USB hard disk, but then again the built in battery is quite powerful as it will run the device for about 10 or 12 hours and therefore the bonus feature is being able to use it as an emergency battery for your phone!

Anyway, I've waffled long enough about that. I should be on

commission! ;-) I am sure this year AGM was a success. We began wrapping the meeting up just after lunch time. Luckily Francesco and Claire offered to take David and Berry back to their hotel. They would be staying in Newark for another evening.

I had originally intended that Trevor and I would also be spending Sunday night and travelling back on Monday, but Trevor had to get back for



a party. However, it meant I could get back and spend the evening with Gill and have another nice meal! We ended up having an amazing takeaway curry.

And that was it, the AGM had come round quickly and it was over for another year. However, there was something more significant. It was the end of an era. Trevor informed us that he had already sold his car, caravan and awning as a complete unit, so never again could we use it as a venue for a meeting. For those of you who don't know, Trevor is following in the footsteps of Ross and Christine Bennett and moving onto a narrow boat full time. Who knows, it could be the start of a new era for the group.

We will be attending the Treff in October. Gill and I will be spending a



few days on the boat with Trevor and Sue prior to the Treff. It will be good to have a break for a few days. Judging from the people who have booked rooms and expressed an interest in attending, it's shaping up to be an amazing meeting, but hopefully a

fair few demonstrations.

We keep saying that funds are low, but we seem to be able to keep going. I don't think this will be the last major meeting held in the UK. I certainly think we have the funds to do it again, but it's up to you "the enthusiast" to give your support for our amazing and unique computer and make this and future meetings a success. J.F.K. had the right idea. Ask not what your group can do for you, but ask what you can do for your group!

That's all from me for now. I hope you enjoy reading my little account of the meeting, and I look forward to seeing you all in October.

TIUGUK Yearly Accounts For 2014/2015

<i>30/06/2014.....PreviousBalanceCarriedForward.....</i>	<i>£220.00</i>
<i>01/07/2014 Subscriptions @ Oxford Annual General Meeting</i>	
<i>.....Group Member.....</i>	<i>+£5.00</i>
<i>.....Group Member.....</i>	<i>+£5.00</i>
<i>.....Group Member.....</i>	<i>+£5.00</i>
<i>.....Group Member.....</i>	<i>+£5.00</i>
<i>.....Group Member.....</i>	<i>+£5.00</i>
<i>.....Group Member.....</i>	<i>+£5.00</i>
<i>.....Group Member.....</i>	<i>+£5.00</i>
<i>.....Group Member.....</i>	<i>+£5.00</i>
<i>.....Group Member.....</i>	<i>+£5.00</i>
<i>.....Group Member.....</i>	<i>+£5.00</i>
<i>.....Group Member.....</i>	<i>+£5.00</i>
	<i>= £60.00</i>
<i>SubTotal.....</i>	<i>£60.00 + £220 = £280.00.....</i>
<i>16/05/2015.....Newark Annual General Meeting Total.....</i>	<i>£280.00</i>

TIUGUK.Paypal Account June 2015

<i>2014.....Balance Carried over from last year.....</i>	<i>£55.39</i>
<i>Members Subscriptions to Group Funds after Newark AGM.</i>	
<i>23/05/15.....David Caine for 2015/16.....</i>	<i>+£10.00</i>
<i>24/05/15.....Fransesco Lama for 2015/16.....</i>	<i>+£4.63</i>
<i>29/05/15.....Sam Castledene for 2015/16.....</i>	<i>+£8.49</i>
<i>01/06/15.....Stuart Conner for 2015/16.....</i>	<i>+£9.00</i>
	<i>= £32.12</i>
<i>Sub Total.....</i>	<i>£32.12 + £55.39 = £87.51.....</i>
<i>15/06/2015.....Paypal Account Total.....</i>	<i>£87.51</i>

MODULE LIBRARY JUNE 2015

<i>TITLE</i>	<i>QTY IN STOCK</i>	<i>PRICE</i>
<i>ADDITION AND SUBTRACTION 1</i>	<i>2</i>	<i>£3.00</i>
<i>ADVENTURE COMPLETE WITH PIRATE TAPE</i>	<i>6.....</i>	<i>£5.00</i>
<i>ADVENTURE MODULE</i>	<i>7</i>	<i>£3.50</i>
<i>ALIENADDITION.....</i>	<i>1.....</i>	<i>£3.00</i>
<i>ALPINEER</i>	<i>4</i>	<i>£8.00</i>
<i>A-MAZING</i>	<i>11</i>	<i>£3.00</i>
<i>BEGINNING GRAMMAR</i>	<i>3</i>	<i>£3.00</i>
<i>BLASTO</i>	<i>2</i>	<i>£4.50</i>
<i>CAR WARS</i>	<i>2</i>	<i>£4.00</i>
<i>CHISHOLM TRAIL</i>	<i>2</i>	<i>£3.50</i>
<i>CONNECT FOUR</i>	<i>4</i>	<i>£3.50</i>
<i>DEFENDER (NOT FOR MARK II CONSOLES)</i>	<i>1</i>	<i>£4.50</i>
<i>DISK MANAGER</i>	<i>6</i>	<i>£2.00</i>
<i>DISK MANAGER 2</i>	<i>3</i>	<i>£4.50</i>
<i>DIVISION 1</i>	<i>2</i>	<i>£3.00</i>
<i>EARLY LOGO LEARNING FUN</i>	<i>1</i>	<i>£3.00</i>
<i>EDITOR ASSEMBLER (WITH MANUALS & DISKS)</i>	<i>5</i>	<i>£25.00</i>
<i>EXTENDED BASIC (WITH MANUALS)</i>	<i>4</i>	<i>£22.50</i>
<i>EXTENDED BASIC MODULE</i>	<i>10</i>	<i>£15.00</i>
<i>EXTENDED BASIC (BOXED)</i>	<i>1</i>	<i>£40.00</i>
<i>FRACTIONAL NUMBERS</i>	<i>1</i>	<i>£3.00</i>
<i>HANGMAN</i>	<i>1</i>	<i>£3.00</i>
<i>HOUSEHOLD BUDGET MANAGEMENT</i>	<i>6</i>	<i>£3.50</i>
<i>HUNT THE WUMPUS</i>	<i>1</i>	<i>£4.00</i>
<i>HUSTLE</i>	<i>1</i>	<i>£3.00</i>
<i>INDOOR SOCCER</i>	<i>3</i>	<i>£4.00</i>
<i>JAWBREAKER II</i>	<i>1</i>	<i>£4.00</i>

TITLE	QTY IN STOCK	PRICE
<i>MICROSURGEON</i>	1	£4.50
<i>MINI MEMORY (LINE BY LINE ASSMBL & MANUAL)</i> ..4.....		£15.00
<i>MINI MEMORY (AS ABOVE + MINI WRITER)</i>	2	£18.00
<i>MINUS MISSION</i>	4	£4.50
<i>MOONPATROL</i>	2.....	£4.00
<i>MULTIPLAN (SOFTWARE & MANUALS, BOXED)</i>	1	£40.00
<i>MULTIPLAN (SOFTWARE & MANUALS)</i>	2	£20.00
<i>MUNCH MAN</i>	3	£3.50
<i>MUSIC MAKER</i>	3	£4.50
<i>NUMBER MAGIC</i>	2.....	£3.50
<i>PAC MAN</i>	1.....	£3.50
<i>PARSEC</i>	3.....	£4.00
<i>PERSONALREALESTATE</i>	1.....	£3.00
<i>PERSONAL RECORD KEEPIN</i>	9.....	£3.50
<i>PERSONALREPORTGENERATOR</i>	2.....	£5.50
<i>COMBI PRK+PRG SWITCHABLE</i>	1	£12.00
<i>PHYSICAL FITNESS</i>	1	£4.00
<i>PROTECTOR II (NOT MARK II CONSOLES)</i>	4	£5.00
<i>PROTYPER</i>	1	£20.00
<i>RETURN TO PIRATE'S ISLE</i>	1	£3.50
<i>SHAMUS (NOT MARK II CONSOLES)</i>	4	£3.50
<i>SPEECH EDITOR</i>	1	£3.50
<i>SUPER DEMON ATTACK</i>	1	£4.50
<i>TERMINAL EMULATOR II</i>	7	£5.00
<i>THE ATTACK</i>	2	£4.00
<i>TI INVADERS</i>	4	£4.00
<i>TI LOGO WITH ORIGINAL FOLDER & MANUAL</i>	1	£15.00
<i>TI WRITER</i>	2	£8.00
<i>TOMBSTONE CITY</i>	7	£4.00
<i>TUNNELS OF DOOM (WITH CASSETTE)</i>	1	£3.50
<i>VIDEO CHESS</i>	3	£5.00
<i>VIDEO GAMES 1</i>	2	£3.50
<i>YAHTZEE</i>	2	£3.00

MODULE LIBRARY BALANCE as at June 2015

Below I give a brief account of what has been happening on the module library front during the last few years. In practice there has been very little activity since December 2013, except for some expenditure.

Total (29th September 2007) £372.27

Sale SUPER EXTENDED BASIC + £30.00
To Eamon Doran, Calle del Borallo'n 4-6 2A,
15007 La Coruna, Spain. Total (19th May 2008) £402.27

Purchase:-

THE ATTACK, EARLY LEARNING FUN, DIVISION 1, VIDEO CHESS, NUMBER MAGIC, READING ON, FRACTIONAL NUMBERS, ALPINE, STORY MACHINE, CHISHOLM TRAIL, TOMBSTONE CITY, EARLY LOGO LEARNING FUN, MUSICMAKER, FACEMAKER, INDOOR SOCCER, ADDITION & SUBTRACTION 1, CONNECT FOUR, PARSEC, ADVENTURE, BLASTO, HANGMAN, ALLIGATOR MIX, HOUSEHOLD BUDGETMANAGEMENT, TERMINAL EMULATOR II, PERSONAL REAL ESTATE

from supeysue on ebay for £50 incl. P&P -- £50.00

Total (21st June 2008) £352.27

Sale EXTENDED BASIC MODULE +£15.00

DISK MANAGER 2 +£4.50

FACE MAKER +£3.00

STORY MACHINE +£3.00

To D. Caine, 18 Marebank Rd, Crewe CW2 8AS. -----

Total (7th August 2009) £377.77

Sale ADDITION & SUBTRACTION 1 +£3.00

ALLIGATOR MIX +£3.00

BEGINNING GRAMMAR +£3.00

EARLY LEARNING FUN +£3.00

MULTIPLICATION 1 +£3.00

NUMBER MAGIC +£3.50

To K Lewis, 23 Larch Av., Whitburn, Sunderland SR6 7DS. -----

Total (19th December 2013) £396.27

Village Hall hire for 3 day AGM in Stanton St John

(July 2014) -- £150.00

Total (July 2014) £246.27

Subscription/Donation from Francesco Lama +£10.00

Total (June 2015) £256.27



A NEW E/A GAME FOR THE TI-99/4A BY RASMUS MOUSTGAARD

ANOTHER GAME BY RASMUS

The Danish programmer Rasmus Moustgaard has written four attractive games for the TI-99/4A in a very short period. The next game of Rasmus is ready. This time he has translated a famous game for the TI-99/4A, previously written for another machine. Sabre Wulf is a ZX Spectrum video game developed and released by Ultimate Play The Game in 1984. The game is the first in the Sabreman series. It was written originally by Tim and Chris Stamper, and later ported to many other computer platforms. In 2004 a new Sabre Wulf game, with completely different gameplay, was released for the Game Boy Advance.

PLOT

A traveller falls into a deep chasm and must battle the creatures that live within in order to make his escape. He is in the beautiful surrounding of a tropical forest.

GAMEPLAY

The Wulf can be seen towards the upper-left of the screen. Taking on the role of Sabreman, players must navigate an intensely colourful flip-screen jungle maze (256 screens) to recover four pieces of a lost amulet (which depicts the titular Wulf). Once all four have been collected and assembled, the Keeper guarding the maze exit can be safely passed. However, between the entrance and exit, Sabreman must fend off a constant army of tropical foes that emerge regularly from the undergrowth with his sabre. Some enemies such as scorpions, snakes and spiders are easily dispatched, but larger adversaries such as hippos, rhinos and natives can only be made to run away by fencing. Furthermore, if the player remains in one screen for too long, an invincible and lethal bushfire appears and moves around the screen, visiting all space the player can occupy, forcing the player to leave the screen. The appearance of the bushfire effectively prevents the player from 'camping', or placing Sabreman in a corner with the fire button depressed and amassing points from dispatching the constant stream of jungle creatures that appear. Along the way, the player also encounters the Wulf's territory at the bottom of the map. Unlike other guardians, the wulf is unaffected by Sabreman's sword and so must be avoided.

COLLECTABLES

As well as searching for the amulet, players can collect treasure for bonus points and extra lives to prolong their jungle adventure. Also available are jungle orchids that periodically grow and flower in forest glades and just need to be run over. There are several varieties of these each in a different colour and with a different effect on the player. Some give immunity to the jungle beasts or increase movement speed, while others cause negative effects such as paralysis or disorientation (reversed controls). Used wisely, they can make progress through the jungle much easier.



THE WARNING

THE PATH IS LONG SO THERE LIES DARK
 THROUGH THE THICK AND DEEP, HAS JUNGLE
 COULD BE THREATENED ALL MOUNTAIN
 SO YOU'VE FROM THE MOUNTAIN ROAD
 TO FIND THE END THIS MOUNTAIN DATE
 BY ONE OF DARK OR REEPLY PATH
 SO ABOUT TO BEET THROUGH
 YOUR FEET BY DARK AND MOUNTAIN STILL
 FROM THE MOUNTAIN MOUNTAIN WITH MOUNT
 YOU WILL FEEL THE END OF THE MOUNTAIN
 THE MOUNTAIN LOST BUT THERE MOUNT
 FOR IN NO DARK THEN YOU SHALL PASS

THE CAST

AMATE MAN - SPY MAN

Monsters

GOATY BATHY PAFYU BOMU
 BAI BUI PINE JOKKI
 BOOM BIRAN

Indestructible Monsters

WATYU MUDGARD
 MUDY THE WOLF
 MUDY
 MUDY
 Fire - Burny 10

Collectibles

Star Life
 GOAL BOMB EXPLOSION WEAPON
 JEWEL MONEY


Orchids

WATYU BATHYU BOMU BOMU
 Core 40

Your Goat

Find The Great
 GREAT AND FOUR PART

The Guardian





TI-99/4A CONVERSION BY
 RASMUS MOUSTGAARD 2014

LIFE 4★ 000000
 HI 001000
 LAST 000000

SABRE WOLF

1 JOYSTICK
 2 KEYBOARD

PRESS FIRE TO START

LIFE 4★ 000000
 HI 001000
 LAST 000000



VIDEO DISPLAY UNITS for my TI HOME COMPUTER since April 1983

In 1983 I purchased my first 994a home computer and accessories, on getting it home I plugged it into the modulator RF aerial socket of a Philips 22 inch colour analogue TV which at that time was our main TV in the living room, and it worked first time, it had only 625 lines scan but looking back worked just fine. At the same time we had a Bush 13 inch portable B&W TV which I then used only for my TI through the modulator RF box and once again 625 lines. A year later in 1984 I purchased a Sharp 14 inch B&W portable again 625 lines TV and again through the modulator RF aerial socket and specifically for use with my TI even in black and white a pretty good picture and sound.



Bush 13 inch portable RF only Shortly after in 1985 I Purchased a B&O 24 inch colour for our main TV, and this again was a good picture through the modulator RF aerial socket. In 1990 I purchased two Philips 14 inch 17 inch TVs and these again produced a

reasonable colour picture through the modulator RF socket. My first monitor was purchased in 1995 from a car boot sale, it was a TATUNG TM01A 14 inch YUV /RGB made specifically for the EINSTEIN 1984 British home computer which uses the same Texas



Phillips 21 inch colour RF/only

My resident hardware guru Mike Goddard, the 6 pin din comes out of the TI video socket then goes into the speaker socket with volume control, then out of the

Sharp 14 inch portable RF only Instruments Graphics chip as the 994a which makes the TM01A MONITOR compatible with the TI. The 994a is connected to the Monitor with a 6 pin to 6 pin cable, the only down side is that the EINSTEIN computer has its speaker built into the console and not into the Monitor, so I purchased a speaker especially made for the TATUNG MONITOR from our TIUGUK as was then our

speaker and into the YUV/RGB 6 pin din socket at the back of the Monitor, there are two 6 pin din sockets at the back of the Monitor, one for YUV/RGB



LINEAR and the other RGB/TTL and also a three way switch to switch between these two plus GREEN SCREEN which cuts out the Red and Blue colours so you get a better resolution with white letters on green background for word-processing and the like. In 2000 I had three 994a's up and running and had the chance to purchase my first LCD TV/MONITOR, this I did a CELLO 14 inch at 4:3 ratio and with only an analogue tuner but has slight colour

Phillips 17 inch TV with RF/Composite bleed through the modulator RF for the TI even though good sound, it also sports an S-VIDEO and VGA with PC left and right sound inputs and AUDIO left and right channels with separate



YELLOW VIDEO inputs and this is known as COMPOSITE AV, I kept this unit as it is easy to transport to AGM meetings on the train in a suitcase, I still have this unit to this day. In 2008 we purchased a SAMSUNG 40 inch LED as our main living room TV high definition with two tuners, digital and analogue decoders, and with the modulator RF the picture and sound are

Tatung CRT Monitor with YUV input advert on ebay UK for a COMPONENT LEAD for vintage 80s. Home computers to work with large screen TVs. and the TI was one of them, this I purchased and right away it worked first time and quite an improvement in



picture as well as sound quality, the cable has on one end a 6 pin din for insertion into the video output of the TI and on the other end 5 separate RCA type pins, 3 for video, RED/GREEN/ BLUE (Pr/Y/Pb) and 2 for sound, (AV) RED/WHITE for Right and Left channel sound. In 2010 I purchased my second LCD TV to use specifically with my TI an ALBA

Rear Connections of A Tatung Monitor. LCD 16 inch high definition with two tuners, digital and analogue decoders.

very easy to tune the TI through the analogue modulator RF with slight bleed on the colour, it also sports an HDMI and SCART and VGA and AUDIO



Rear Connections of A Chello TV/Monitor

channel and WHITE for left and to get a picture. Through the YELLOW VIDEO socket I had to use the GREEN pin inserted into the yellow socket and as this is a COMPONENT lead I could not use the other



Chello TV/Monitor In VGA Mode.

connections, this I found very strange but when this was mentioned at our TI TREFF in Eindhoven in 2013 I was told by Jens-Eike Hartwig that the problem is that there is no international standard for COMPONENT connections as there is with VGA why? No one



Alba TV In Composite Black/White Mode

sometimes extensive modifications, I thought all this was a thing of the past in this the 21st. century, but it seems not, as one TV/MONITOR works with COMPONENT or YUV and the other does not, In 2012 I had another chance to purchase my second

left and right with one pin for VIDEO and this is known as COMPOSITE/ AV. and the image can be adjusted anywhere between 4:3 to 14:9 to 16:9 wide screen and as I already had a COMPONENT CABLE, I tried this through the COMPOSITE sockets

on my ALBA. RED for right channel and WHITE for left and to get a picture. Through the

YELLOW VIDEO socket I had to use the GREEN pin inserted into the yellow socket and as this is a COMPONENT lead I could not use the other

two coloured pins and picture is in COMPOSITE black and white only,

but a good quality picture and sound all the same. In 2011 I tried my COMPONENT

lead on two small LED LCD TV/MONITORS, one was a LUXOR 16

inch from ASDA with a YUV connection and the other was ESSENTIALS 15

inch sold through Curries with a COMPONENT connection and neither of them worked through their respective

connections, this I found very strange but when this was mentioned at our TI TREFF in Eindhoven in 2013 I was told

by Jens-Eike Hartwig that the problem is that there is no international standard for COMPONENT connections as there is with VGA why? No one

knows, a bit of a mystery. In the 1970s and 80s there were quite a few

electronic companies about and not all but most had their own standards for chips, controllers,

RS232, joysticks, mice, printers, plotters, disk drives, etc. and hardware from one company would

not necessarily work with another companies computer without

sometimes extensive modifications, I thought all this was a thing of the past in this the 21st. century, but it seems

not, as one TV/MONITOR works with COMPONENT or YUV and the other does not, In 2012 I had another chance to purchase my second

TATUNG TM01A MONITOR this I did and used this on one of my three TI



consoles, and once again, very happy with the quality of picture and sound through the YUV socket, and later given the chance of purchasing my second small screen LCD ALBA TV the very same model as the first with HDMI, VGA, SCART and AV. With built in digital and analogue decoder and screen ratio

Colour Imbalance with Warfdale Component can be adjusted from 4:3 to 14:9 and 16:9 even through the modulator RF is quite a good picture with minimal colour bleed and very good stereo sound. Also tested was a WARFDAL



LCD TV/DVD/MONITOR at our AGM in Crewe in 2013 and worked pretty good with RF modulator with slight colour bleed, but not so good with COMPONENT, very unstable picture quality. Now early in 2014 I had purchased a VGA CONVERSION CHIP from our user group chairman Trevor Stevens, he had purchased two from Matthew Hagerty in USA. Trevor had

40 inch Samsung Component Video Display demonstrated this hardware modification at our AGM in Oxford in June



2014. On returning home I did my own modification on my beige TI console, it took a few hours but I got there in the end the TI console case had to be modified to accommodate the external VGA connection, in the meantime I had purchased a long and short VGA to VGA lead and on trying it on my 16 inch ALBA and 14 inch CELLO and 40 inch SAMSUNG it worked first time

Samsung VGA Video Display in F18A Mode and boy what a difference in picture quality but as there is no sound through the VGA socket, I used my COMPONENT lead to go from the 6 pin din video output on the TI, but

here is another quirk in the circuitry of the different TV/MONITOR units, the ALBA will accept the COMPONENT AV inputs RED/WHITE plugged into the AV sockets, the CELLO and the SAMSUNG sound will only work if the AV inputs are plugged into the PC SOUND inputs, as regards the PHILIPS portables, as well as RF these will accept AV YELLOW/WHITE only in MONO and BLACK and WHITE, either way if this is done on any of the displays you will get improved quality sound as well as picture. Later in 2014 I had chance to purchase another 16 inch ALBA LCD TV and decided that the picture and sound quality was that good that my idea was to replace the TWO TATUNG MONITORS with my TWO ALBA TV/MONITORS. So to recap it seems that from my experience since 1983 on the video display units I have used VGA is the better quality colour picture for the TI with more colours defined and clearer sound and as far as I know is a universal standard, and the main advantage to PROGRAM and GAMES is that they run and play faster and clearer and all 31 sprites can be



Component Cable with Video (3 pin) and Sound (2 pin) and 6 pin din TI Video Plug visible on one line at the same time, but because of the HARDWARE MOTHERBOARD MODIFICATON to the TI. with the VGA CHIP, a small percentage of programs are not fully compatible with the TI. The one program I know about is MINER 2049er EPROM in a TI cartridge also on disk is that the program is usable but the sprites are not recognised by the program and so unplayable, on the other hand it is a dream to play Data East's BURGERTIME and TI's MUNCHMAN with the F18A installed with a much faster play and music also much brighter screens with all sprites visible on the same line, how they should have been to start with. The COMPONENT and YUV is just as good a quality colour picture as VGA but the down side is COMPONENT is not a universal standard so what works on one display does

not necessarily work with another, the upside to this is that because of NO MODIFICATION to the TI MOTHERBOARD that all programs are still 100% compatible with the TI, so if you can get a TV/MONITOR to work through COMPONENT with the TI, then go for it as there are no modifications AV or (audio/video) RED/WHITE and YELLOW gives a clear quality picture and sound but on the TI European PAL system is in BLACK and WHITE video and sound only. You must remember that when the VGA conversion is done the RF, COMPOSITE and COMPONENT will not work, only when VGA conversion is reversed will you be able to return to these other displays. I have seen on Ebay that there is another way for the TI to display, that is with a EUROCKET connection to a 6 pin din video socket for the TI connection, if anyone has tried this connection please let me know.

VIDEO DISPLAY UNITS for the TEXAS INSTRUMENTS Home Computer

BUSH TV	B&W 13 inch portable RF Only	(mono sound)	1983
PHILIPS TV	COLOUR 22 inch RF Only	(mono sound)	1983
SHARP TV	B&W 14 inch portable RF Only	(mono sound)	1984
B&O TV	COLOUR 24 inch RF/COMPOSITE AV	(stereo sound)	1985
PHILIPS TV	COLOUR 17 inch RF/COMPOSITE AV	(stereo sound)	1990
TATUNG MONITOR TM01A	COLOUR/GREEN 14 inch YUV only	(mono)	1995
CELLO LCD TV/MONITOR	COLOUR 14 inch RF/VGA/AV/PC	(stereo)	2000
SAMSUNG LED TV.	COLOUR 40 inch RF/VGA/COMPONENT/AV/PC	(s)	2008
ALBA LCD TV/MONITOR	COLOUR 16 inch RF/VGA/AV	(stereo sound)	2010
LUXOR LED TV/MONITOR	COLOUR 16 inch RF/VGA/YUV/AV	(stereo)	2011
ESSENTIALS TV/MON.	COLOUR 15 inch RF/VGA/COMPONENT/AV	(s)	2011
TATUNG MONITOR TM01A	COLOUR/GREEN 14 inch YUV only	(mono)	2012
WARFDEALE LCD TV/MONITOR	19inch RF/VGA/COMPONENT/A	(mono)	2013
ALBA LCD TV/MONITOR	COLOUR 16 inch RF/ VGA/AV	(stereo sound)	2014

RF/AIREAL	COLOUR through TV/RF MODULATOR	(sound & video)	1983
PC for use with	VGA RED/WHITE	(sound only)	2000
COMPONENT	COLOUR with GREEN/RED/BLUE	(video only)	2013
COMPOSITE/AV	B/W with YELLOW/RED/WHITE	(video & sound)	2013
A for use with	VGA/COMPONENT (1 connection)	(mono sound only)	2013
V18A MODIFICATION	COLOUR with all VGA/VGA	(video only)	2014
AV for use with	VGA/COMPONENT RED/WHITE	(sound only)	2014
EUROCKET to 6 pin din TI socket		(video & sound)	2015

*This article was conceived in Feb/March of 2015, it was typed onto Microsoft word 2007 for insertion into TI*MES magazine. Do hope you enjoy.*



Report of the TI Treffen of TI Club Errorfree at Gasthof 'Zum Engel' in Birkenau (Bergstrasse) on Saturday April, 25th

TI Club Errorfree

Every year I visit the spring meeting of the German TI Club Errorfree. This group is one of the oldest (and the last still remaining) TI groups of Germany and was founded in 1984 in the area of Stuttgart. For many years the group informed the members by a bimonthly diskette (diskazine). Today you will find the information of the group on their website <http://www.errorfree.de>. The group organizes yearly spring meetings. Till 1998 the group stayed in a hotel in Heppenheim (Bergstrasse). When this hotel closed business the group went to Birkenau.

Birkenau

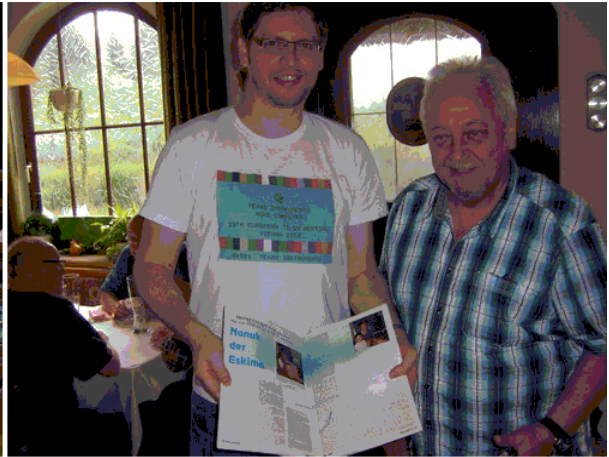
The village Birkenau in the Odenwald is a community in the Bergstrasse district in southern Hesse, Germany. Its nickname is Das Dorf der Sonnenuhren (The Sundial Village). There you will find our Gasthof Zum Engel (inn for angels). Bergstrasse (Mountain Road) is a district in the south of Hesse, Germany. The district is located in the Odenwald mountains, with the 517m high Melibokus as the highest elevation. The Bergstrasse is a tourist route which leads from Darmstadt to Wiesloch; the northern part of this route goes through the district and gave it its name.

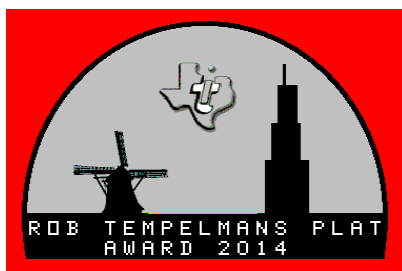
The meeting of 2015

Till 2006 the number of visitors at the Errorfree spring meeting went down. In 2006 there were only 11 users present. But unexpectedly there was a revival of the Birkenau meeting. Last year 25 users visited the Treff. This year we had 32 visitors; a record attendance! And every year we see new faces. There were TI users from Germany (the majority), The Netherlands and Austria. And we enjoyed our TI hobby, but also the wine and beer of the area and the wonderful cooking of the owner of the inn. There were interesting computer demonstrations by Klaus Lukaschek, Wolfgang Bertsch and Michaël Zapf. And there was written information in German about the next European TI Treffen in Crewe, organized by the TIUGUK (of course). Next year there will be another Birkenau meeting of Errorfree don't miss it!

(BH)

TI-99/4A User Group UK – TI*MES Newsletter





THE ROB TEMPELMANS PLAT AWARD

The Rob Tempelmans Plat Award is a combined initiative of the Chicago TI Users Group and the Dutch TI Gebruikersgroep. The purpose of this award is to honour the TI-er who has produced the best internet site for the TI community. This award is named after the Dutch employee of Texas Instruments, Rob Tempelmans Plat, who, in 1983, wrote the first assembler program to allow the TI-99/4A to access VIDITEL, a preliminary version of the web. These are the Award winners:

2004 Ron Reuter	Mainbyte's Home of the TI Computers http://www.mainbyte.com/ti99/
2005 Thierry Nospikel	The TI-99/4A Tech Pages http://www.nospikel.com/ti99/titech.htm
2006 Bryan Roppolo Boulder	TI-99/4A Video Gamehouse http://www.videogamehouse.net/
2007 Walid Maalouli	TI-99/4A Game Shelf http://tigameshelf.net/
2008 Tom Wills and Bill Gaskill	Bill Gaskill's Original Timeline 99 http://www.ti99ers.org/timeline/
2009 Tom Wills	TI99ers Hall of Fame http://www.ti99hof.org/
2010 Fabrice Montupet	TI-99 Forever http://www.ti99.com/zoneti.htm
2011 Ernie Pergrem	TI-99/4A Home Computer Book Archive http://www.hexbus.com/tibooks/
2012 Fred Kaal	My TI99-4A and Geneve Web Pages http://www.ti99-geek.nl/
2013 Stuart Conner	Stuart Conner's Home Page http://www.avjd51.dsl.pipex.com/ti/ti.htm
2014 Ciro Barile	TI-99 Italian User Club http://www.ti99iuc.it/

INTRODUCTION

As you may know the HFDC. card was made to go into the PERIPHERAL EXPANSION BOX of the Texas Instruments 994/a home computer, and was made by a New Jersey company Called Myarc and released on sale in 1988, it was the FIRST and only Peripheral Card that runs



Myarc 1990s HFDC for 40/80 track DS/DD. Version H11. HARD and FLOPPY disks together, it is one of the most useful third party items ever produced for the TI994/a, even though the quality was never up not up to the TI. Standard.

Since I acquired a used early HFDC. Card in 1995 and even though I have had issues with compatibility and connections, I have never looked back and persevered over the years.

ISSUES

The early issues I had with the HFDC card was a matter of compatibility, by this I mean that the Card was advertised as able to control (3) 40meg. MFM Hard Drives, (1) backup Tape Drive and (4) 720k floppy disk drives with a mixture of either (3 1/2") (5 1/4") or (8") Drives of either Hard or Floppy, I soon found out that there was NO provision for a Tape Drive and that the Card would not recognise Hard Drive (3) even though there is a third connection on the Card, but leaving all that aside, when it's working it works well.

DIP SWITCHES

So over the years I have just been working with what I have had at the time. A Seagate ST-125 20meg.(3 1/2") half height Drive came with the original sale, first I had to make sure the select pin on the underside was on (DRIVE 1 PIN 1) and to make sure the RESISTOR PACK was still in place, as this was the only Hard Drive on my system at that time, it also has to have (2) cable leads, cable number (1) a 34 pin DATA lead, and cable number (2) a 20 pin CONTROL lead, and with both leads connected to the HFDC card. I also had to make sure before anything



would work that the DIP SWITCHES on the Card were set to the correct location.

There are two sets of DIP SWITCHES, number (1) (a set of four levers) allows you to set the CRU ADDRESS (I have mine at 1900 so as not to conflict with other Cards. Switch number (2)

This is the rear of my Hard Drives with Tripple Cool Air Fans (a set of eight levers) allows you to set what type of FLOPPY drives you have on your system, the options are (1)(2) for 40 track 360k.fast. (3)(4) For 40 track 360k. Slow. (5)(6) For 80 track 720k. Fast and (7)(8) for future expansion to 80 tracks, 1.44meg. Fast.

POWER SUPPLIES

The power supply, I have learned over the years is very critical, I started off with (1) stand alone 50watt. Supply and (1) 3 ½” hard drive from my original purchase, and two 5 ¼” 80 track floppy drives which I purchased from Ross Bennett, who was our User Group Electronics Engineer in the 1990’s, later I upgraded my power supply to 65watt. And added another hard drive and two 3 ½ “floppy disk drives, but in jan.2012 when I tried installing (3) hard drives, that power supply gave up the ghost and just died, I then tried an old IBM. 200watt. Supply which I had stored away for the last fifteen years and this had been working okay for about twelve months until October of 2013, one morning when I came to switch on there was no life in it at all, and the only spare supply I had was the original 50watt, but that would not run (2) 20meg. Hard Drives, (2) 5 ¼”80 track and (2) 3 ½”80 track Floppy Drives, and failing to acquire a supply locally, I contacted our User Group Chairman Trevor Stevens, and he told me I would need an AT supply and not an ATX which relies on the Motherboard to bring the supply to life, and he suggested a unit at 300watt. on e-bay that had been converted from an ATX to an



My 2013 ATX Converted AT 300watt Power Supply. AT. A SEVENTEAM model ST-300BLP. So I sent for this unit brand new and it worked first time, and still going strong now, fingers crossed.

HARD DRIVES



The hardest part of getting all these drives working together are the connections, and first I had to see if I could defy all odds and get (3) Hard Drives working together, but to do this I wanted to acquire a drive that was compatible with the drives I was Already using and the two in question that have tested well together are the NEC 5 1/4". D5126's.

NEC D5126 20meg. Hard Drives circa 1986

I was given my first NEC. By our User Group Chairman, Trevor Stevens in 2003, which had been used previously on our Bulletin Board, my next NEC drive was purchased from USA in 2010 through e-bay . so in 2011 I purchased my third and final drive from RUMANIA again through e-bay and runs every bit as good as the other two, but not all three together, as I will explain later.

Since working with the MYARC HFDC. I have accumulated a few Hard Drives over the years and they all work fine, but not necessarily well together. They are (1) Seagate 3 1/2" 20meg. ST-125 from 1985. (2) NEC. 3 1/2" 20meg. D3126 from 1988. (2) MINISCRIBE 3 1/2" 20meg. 8425 from 1988. All



Myarc HFDC. 1988 modified Card v.H14 for 40/80 tracks Half height and MFM only, NO MFM/RLL, as they do not work, believe me I have tried.

HFDC CARDS

In the meantime early in 2010, I had received another HFDC card from Trevor, as our Bulletin Board had been long gone, I was able to test the Card on my System, and at the time could only get three Floppy Disks to work and no Hard drives, so as I kept having issues with my original HFDC Card, I decided to send BOTH CARDS off to be fixed and upgraded. Berry Harmsen had put me in touch with Richard Bell of USA and so BOTH cards were promptly sent off for Repair.

I still use the standard TI. FLOPPY DISK CONTROLLER to control all three 40 track double sided, single density floppy drives in the EXPANSION BOX and the HFDC controls my 80 track double density floppy drives as well as the Hard Drives.

CARD MODIFICATIONS While BOTH cards were being attended to in USA, in August of 2011 I purchased another HFDC card from one of our User Group members Mark Wills at Richard Twyning's house while taking part in our TI. AGM. And Workshop in Kirkby-in-Ashfield just outside Nottingham, and This Card is one of the better examples of MYARC workmanship I've seen; I believe it is one of the later versions with GOLD contacts on the BACK EDGE as well as on the BOTTOM EDGE, when testing, it worked first time with all my DRIVES even though this version is H11 and not H14 as are the modified CARDS.

FANS&WIRING I don't use my HFDC Cards with their original clamshell; instead I have installed COOLING FANS either side of the CARD inside the expansion box, a Space has to be left either side. COOLING FANS are also placed at the rear of the TWO HARD DRIVES as they both get mighty hot after a While. There are that many (Molex) electrical power connections at



5 1/4" & 3 1/2" floppy & Hard Disk metal case enclosures.

the back of my system now that things do go wrong from time to time in July of this year, the Hard Drives kept losing power, first I thought it could be the power supply was it still not big enough? Then I spent a couple of hours checking the Molex connections and found the culprit, a connecting wire was faulty, i Rearranged all the

AND AWAY WE GO To start my system now, I FIRST switch on at the wall socket, then the 300watt. Power switch, (wait six seconds for the hard drives to come up to speed) then switch on the EXPANSION BOX (all the lights will come on two hard drives and four floppies) (six seconds later the lights will go out on the four floppies) and then and only then do I switch on my TI. Console, and then with MYARC disk manager V actually preinstalled on the Hard Drive, I type in WDS1.MDM5 from option 5 of Editor Assembler and within three or four seconds were up and running.

CONCLUSION So the moral of this story is, if you're having problems, don't just pack in, give it another go, and another, if you're passionate about something, it could work out for you just as it did for me, I agree it did take longer than expected, but worth it in the end. And The people that helped make it all happen i wish to thank starting



20 meg. MFM. NEC D3126 3 1/2" Hard Drive with 5 1/4" Adapter
with, Ross Bennett, at the time our User Group resident electrical Engineer who fixed and modified my original Card in 1999, Trevor Stevens for providing me with an excellent NEC Hard Drive and a Second HFDC card Berry Harmsen for providing the necessary information for repairs and upgrades of my Cards, Mark Wills for selling to me a third HFDC Card, the better quality one of the three, Richard Twynning and Fred Kaal for providing documentation on the HFDC cards, And last but not least, the two chaps in the U.S of A who fixed and modified the two CARDS for me in 2011, and brought them up to date, Richard Bell and Tim Tesch.

My FIRST HFDC card in 1995 I purchased at a cost of £100 including



a 50watt. Power supply and (1) SEAGATE ST-125 20Meg. Hard drive, including all leads My next spend was in 1999 of £100 for two 5 1/4" 80 track double sided double density. Floppy drives and an upgrade for my

2*20meg.5 1/4" NEC D5126s MFM half height inside TI FULL height Metal Case.

original HFDC card and Power Supply My THIRD HFDC card at a cost of £100 . My next spend was in 2012 for the repair of HFDC card (1) and (2) at a TOTAL cost of £100. And in the meantime the cost of SIX 20 meg. HARD DRIVES at a total COST OF £200.

My next spend was in 2013 for a 300watt. Power supply at £40 Just to give you an idea what lies behind the running of a MYARC HARD & FLOPPY

DISK CONTROLLER card and the overall cost. Not cheap but just over £30 per year over eighteen years, as in 1990 the cost of three new HFDC cards and six new 20meg. Hard Drives and all relevant leads and not forgetting the 5 ¼” and 3 ½” floppy drives would have cost in the region of 3000 English Pounds, and i did it for about one fifth of the price, albeit second hand

Thank you for listening, this review was originally written by me David Caine of the TIUGUK. In August of 2012 on the TI. Using DataBioTics beyond Wordwriter cartridge and Hard Drives for storing the information and boy is it quick with the Cartridge and Hard Drives and even the floppies are twice as fast. So from switching on my TI. To being able to work from the screen I’m up and running in about thirty seconds, wonderful, but as you all know the photographs are difficult if not impossible with the TI.



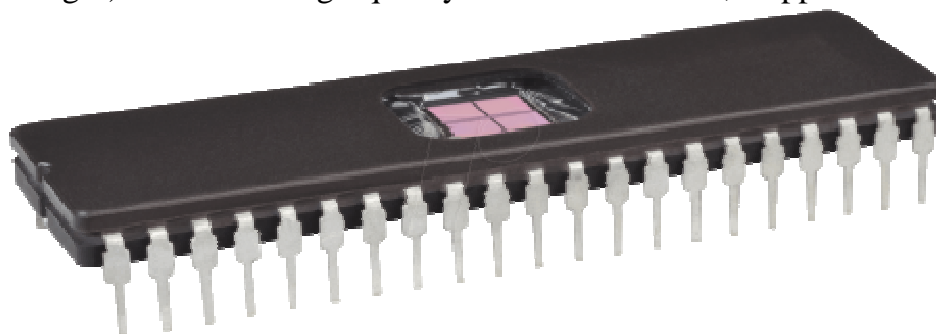
My PEB. With 1990s. HFDC version H11 card with low power cool air fans either side.

This re-write was produced between January and March 2015 on my Laptop with PHOTOGRAPHS and the help of Microsoft Word 2007

NEW 2 Mb CARTRIDGE BY JIM FETZNER

On the TI99/4A Yahoo site Jim Fetzner gave information about a new cartridge with large storage for games and utilities. The cartridge is on in a row of new cartridge boards, designed in cooperation with Tursi and Jon Guidry.

I've been working on a new cartridge board for a while, and it has finally completed testing. The board has two meg of games on it that are loaded into the 32K card and executed. Tony Knerr constructed the game image for it and Tursi designed the bank test program we needed to make sure everything was working as expected. Jon Guidry did some initial beta testing as well-and my thanks go out to all three of them, as this project would not have come to fruition without them. These boards use the 27C160 EPROM chips, which are too large for many of the EPROM burners out there (they are 42-pin PDIP chips), so I'll only be selling these as a complete package for now. A fully assembled cartridge with the two meg Games image (it has all of the games from the first four of Tony's 512K Games images) with a nice high-quality label will cost \$35, shipped to a US address.



The 128Kx4 (Black), 512k (Red), UberGROM (Blue), and 8Kx4 Supercart (Green) boards are also still available. Email me for details on those.

I should also have a PEB splitter board ready by the end of January, so that those of you who cannot fit all of the cards you need into a single PEB can put a second one into the chain and continue to expand your systems. No price on those yet, as I haven't fabricated the boards yet to determine the final parts cost. The board actually allows for a third expansion path (done to allow seamless connection of CF7+ devices when needed instead of the PEBs), but use is either or-if the CF7 is connected, the PEBs have to be turned off.

Jim Fetzner, Alexandria, VA (USA)

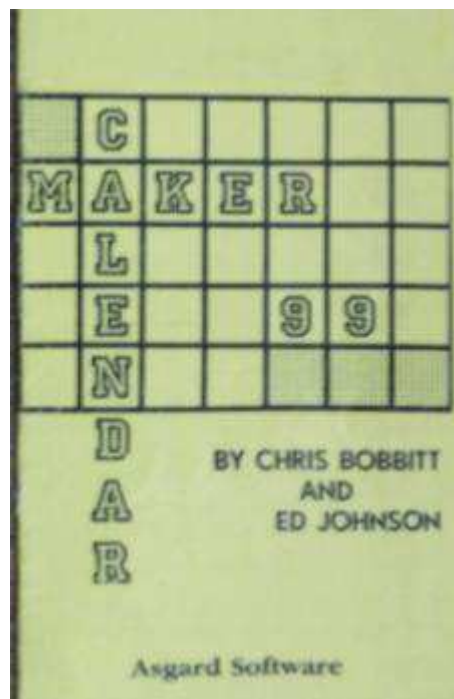
This is the complete list of the 30 European TI Treffen

NUMBER	DATE	CITY	COUNTRY
Treffen # 01	November 29, 1986	Koeln	Germany
Treffen # 02	October 10, 1987	Bremen	Germany
Treffen # 03	October 15, 1988	Duisburg	Germany
Treffen # 04	October 7, 1989	Nijmegen	Netherlands
Treffen # 05	September 29, 1990	Wiesbaden	Germany
Treffen # 06	September 14, 1991	Berlin	Germany
Treffen # 07	October 10, 1992	Wiesbaden	Germany
Treffen # 08	October 9, 1993	Stuttgart	Germany
Treffen # 09	October 15, 1994	Goettingen	Germany
Treffen # 10	September 23, 1995	Wien	Austria
Treffen # 11	November 2, 1996	Wolfsburg	Germany
Treffen # 12	October 25, 1997	Utrecht	Netherlands
Treffen # 13	October 10, 1998	Nottingham	England
Treffen # 14	October 2, 1999	Freiburg	Germany
Treffen # 15	October 7, 2000	Gent	Belgium
Treffen # 16	October 6, 2001	Wuppertal	Germany
Treffen # 17	September 14, 2002	Nottingham	England
Treffen # 18	September 27, 2003	Wien	Austria
Treffen # 19	September 25, 2004	Birkenau	Germany
Treffen # 20	September 17, 2005	Venlo	Netherlands
Treffen # 21	September 30, 2006	Flensburg	Germany
Treffen # 22	September 29, 2007	Hilversum	Netherlands
Treffen # 23	October 4, 2008	Paderborn	Germany
Treffen # 24	September 26, 2009	Wien	Austria
Treffen # 25	September 25, 2010	Nottingham	England
Treffen # 26	October 1, 2011	Rome	Italy
Treffen # 27	September 29, 2012	Augsburg	Germany
Treffen # 28	October 5, 2013	Eindhoven	Netherlands
Treffen # 29	October 4, 2014	Wien	Austria
Treffen # 30	October 3, 2015	Crewe	England

And there are already plans for the Treffen of the next years. In 2016 we will have a meeting in Copenhagen (Denmark). During the Treffen in Crewe we will get additional information about this event. There are also plans for 2017. Then Ciro Barile of the Italian TI Club will organize a Treffen in Rome. You see: the show must go on!

CALENDAR MAKER 99 software pack. : review:

INTRODUCTION Calendar Maker 99 (or CM99) came on TWO 5 ¼” single sided, single density 40 track floppy disks, the PROGRAM disk and WORK disk, and was produced and sold by Asgard Software, Rockville, MD, USA in 1988, for the Texas Instruments 99/4a home computer, the Program and Manual written by the owners of Asgard, Chris Bobbitt and Ed. Johnson, who have been out of the TI Business since about 1993 and as far as I’m concerned they Made a pretty good job in general, especially the graphics side of the program, of which the finished article is excellent, what really let the whole concept down at the end of the day was the lack of error checking, but no doubt Asgard, like most other companies at that time wanted the product out of the door to bring in some profit.



ISSUES It all started off innocently [Original Calendar Maker 99 Manual](#) enough when in 1992 I purchased the CM99 software package direct from Asgard in USA. At a cost of twenty English pounds including p&p. The Manual is well written and fairly easy to understand, and after some time of reading and understanding the Manual, playing around with the program and lining everything up with my Epson Printer. For the first couple of years my calendars were as you say spot on, and so a couple of years later I decided to do FOUR YEAR calendars, all was going well until year 1998 the program would break after the last day in February and as a result a full year calendar could not be used for that year, so I had to print that year with individual months, the paper had to be lined up for printer output on each month separately, and with me doing about ten calendars for friends and family, it was a bit of a pain to say the least, but it worked. There was worse to come, the next set of four year calendars Included the year 2000, now no doubt the programmers at Asgard did not envisage their CM99 Program being used for any more than a few years, as they **had not made provision for a leap year in the year 2000**

And yet the Manual does state that the CM99 Program would print any year from 1600 To 2400, this it does but all years after 2000 are one day out and all leap years are not in line, so you see something vitally important was missing.

So with the correct information I acquired from the Greenwich Laboratory here in England, it looks like it's the year 3000 that doesn't Warrant a leap year and not 2000, so with the knowledge that 2000 was a leap year, the program had to be altered as it was no good for calendar Making or anything else for that matter.

PROGRAM FIX. In May of 1998 I noticed from MICROpendium that Harry Brashear was the last known owner of Asgard Software. So a letter was swiftly sent off to him, at the same time a letter was put together for



MICROpendium to explain about this issue with CM99. MICROpendium wrote back in their July/August Magazine that Harry no longer runs Asgard, but did leave a forwarding address for Ramcharged Computers in Ohio.

Now in the meantime I had been corresponding with Bruce Harrison of Hyattsville, MD. USA. About differences in printer issues for our TI. Between 9 and 24 pin, ink jet, bubble jet and colour printers in general, and lo and behold he had read my article in the Magazine and swiftly wrote to me saying that if the source code was in ASSEMBLY, I would have to get the code from Ron Markus of Ramcharged Computers before the

program could be altered, but when Bruce received the CM99 disks from me he said all files were in EXTENDED BASIC and would stand a good chance of being fixed. Within a few days Bruce had fixed all files.

The fix was done in the **CREATE** section of the **PROGRAM** disk. Lines 910 and 970 fix it for the **Leap year in 2000 and the years thereafter.**

In line 910 (y=2000) + **was taken out**
In line 970 :: IF Y>2000 THEN 990 **was taken out**

Bruce also set up the CM99 program for 24 pin printers as well as our well known 9 pin. **All has been explained in the March / April 1999 edition of MICROpendium.**

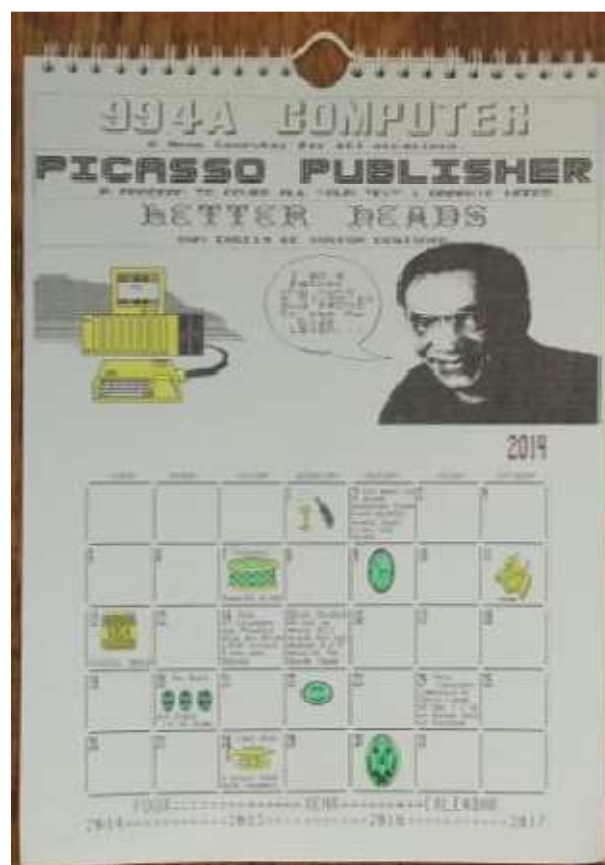
CONCLUSION

Since then the CM99 program has run successfully on my 9, and 24 pin printers, without a hitch until just lately, in May of 2013 while printing my latest set of calendars out, the program broke again after the last day in February 2015, (WHY? Your guess is as good as mine) so that meant once again the next 10 months had to be printed separately and the problem was I was doing ELEVEN FOUR YEAR calendars for our User Group Annual General Meeting Which was being held in August 2013 at the Hough, near Crewe in Cheshire.

I was finally able to complete all calendars, and with all the up's and down's took quite a few hours to complete from start to finish including colouring a few by hand which the original CM99 was not programmed to do, they were then taken to our local Book shop for wire binding.

Anyway I've gone on long enough; I hope you have enjoyed the review of this very fine product no doubt the Beta testing of this product would have taken many hours before marketing but the old English saying of Enough is never Enough, was very true for this product. Thank you for listening if you received a calendar from our 2013 AGM In Crewe, I do hope you enjoy, if not maybe next time, and if it had not been for the foresight and tenacity of our late and Great Mr. Bruce Harrison this Modification of the CM99 program might never have seen the light of day.

This review was originally written WITHOUT the PHOTOGRAPHS in 2013 on my TI with the help of Beyond Wordwriter Cartridge and Hard Drives for of 2015 was produced on Microsoft



This is my latest 2014 to 2017 four year Calendar Backup. This re-write in January of 2015 was produced on my Laptop with the help of Microsoft Word 2007

30th European TI Treffen on 2, 3 and 4 October 2015 at the BW Crewe Arms Hotel on Nantwich Road in Crewe



The next European TI meeting will be held in the railway town of Crewe, in the county of Cheshire and will be organized by the TI-99 User Group of the United Kingdom (TIUGUK). Everyone is welcome, please reserve your room in Best Western Crewe Arms Hotel by June 2015. See you at the Treff!!



The meeting is this year again a three day event and starts on Friday, October 2 and ends on Sunday, October 4. We have a conference hall and rooms at the unique railway hotel 'Best Western Crewe Arms Hotel' in Crewe (Cheshire), which has been completely renovated in the last year.

Prices of rooms:

Single room (including breakfast) £ 40.- per night / per person
Double room (including breakfast) £ 30.- per night / per person
- There are rooms available for wheelchair users -.



Prices for meals.

Lunch (sandwiches and chips) on average £ 6.95 per person.
À la carte lunch from £ 9.95 per person.
TI dinner on Saturday at the hotel restaurant £16.95 per person
- This is a buffet, three-course dinner -.

The meeting room

The Gladstone Hall is in full use by the group from Friday 10am to Sunday evening 10pm. For demonstrations, there is a screen with a projector. The meeting room is closed and locked during our respective absence.



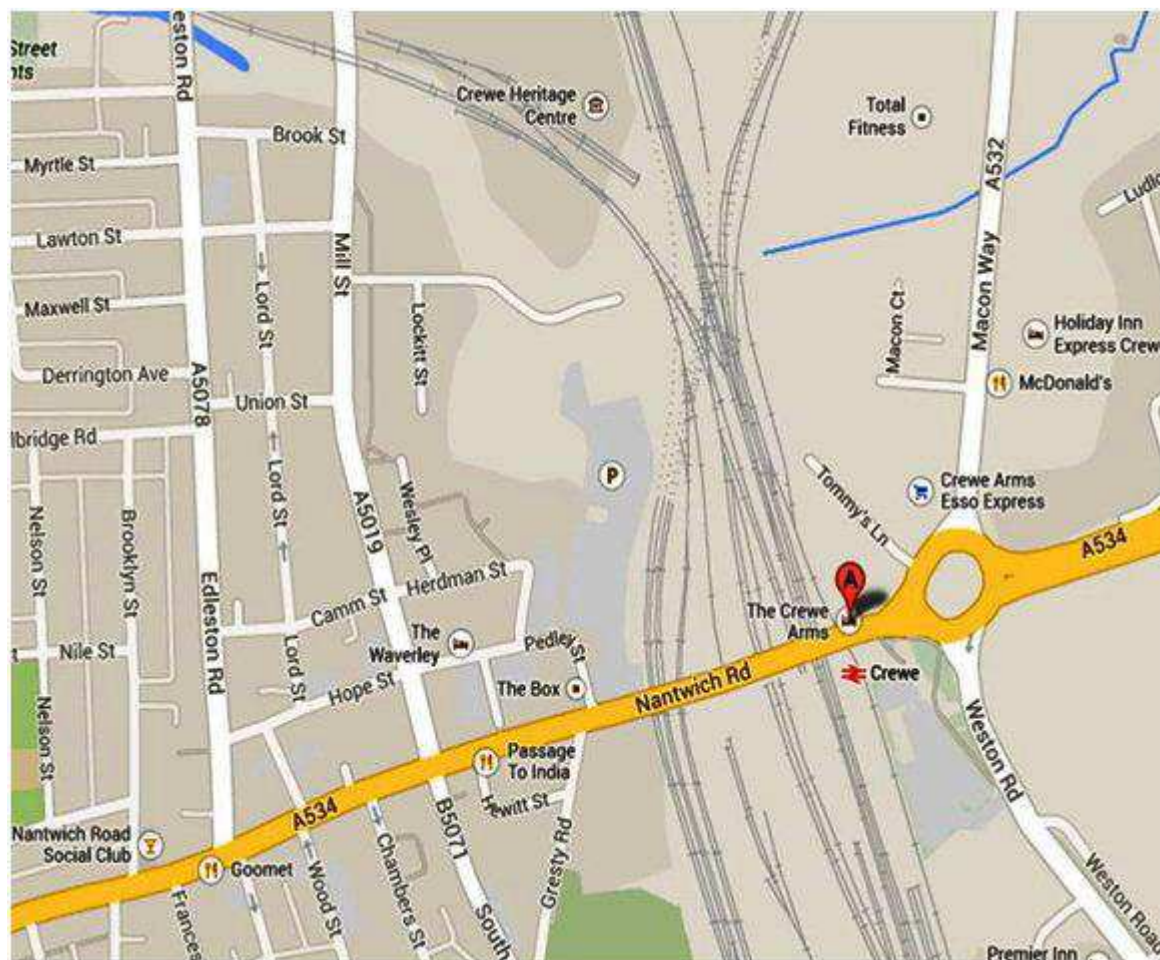
Admission to the meeting:

The TIUGUK requires an entry fee of £ 5.-.per visitor.
The TIUGUK can use the event room free of charge under the condition that at least 15 rooms for 3 nights are rented by the visitors. If this criterion is not reached, the entry fee will be increased to a max of £ 15.-.

Calculation example

If you book the meeting for 3 nights in a SINGLE room, the cost will be between £ 141.95 and £ 151.95, consisting of:

3x £ 40.- (nights) + £ 16.95 (dinner) + £ 5.- or £ 15.- (access)



Connections

Crewe is easily accessible from the airports of Manchester, Birmingham and (possibly) Liverpool. The first two airports have their own rail station, with direct links to Crewe. Trains run every 45 - 50 minutes. The trip costs between £12.- and £20 return and takes about 45 minutes. The Best Western Crewe Arms Hotel is located directly across the entrance of the Crewe railway station.

Motorists drive to Crewe on the motorway M6 (London - Scotland). Take junction 17 and reach in about 5 miles on the A534 the roundabout east of the railway station of Crewe. The Best Western Crewe Arms Hotel is immediately on the right side of the Nantwich Road, opposite the station. AS per MAP.

Reservation and payment

Please **BOOK DIRECTLY** at the hotel. Contact person is **RACHEAL BICKERTON**, General Manager of Best Western Crewe Arms Hotel. Enter the name of the event: **'TEXAS INSTRUMENTS EUROPEAN TREFF'** and the dates of the desired nights. The phone number of the hotel is **+44 (0)1270213204**
CREDIT or DEBIT Card needed for Booking.

Additional Information

Want to know more information contact the Chairman of TIUGUK **TREVOR STEVENS**, on: **+44 (0)7968370586** or e-mail support@taghosting.co.uk Want to know more about the meeting in Crewe contact **David Caine on +44 (0)7752052117** or e-mail cainehd@gmail.com You can also go to the website of TIUGUK: <http://www.ti99ug.co.uk/> then choose the category 'Events'.

Program of the Treffen

Below is the program of the meeting. In the next email of the TIUGUK comes the final schedule, with more information about demonstrations, restaurants and transportation.

Friday, October 2, 2015.

10:00 -13:00 Computer installations in the conference room
13:00 -15:00 Lunch at the hotel
15:00 Official opening of the 30th European TI Treffen
15.00 -19.00 FIRST DEMONSTRATIONS and TI fun
19:00 -22:00 Dinner in the Brocklebank Pub at Weston Road Crewe
22:00 -23.00 Closing of the first day

Saturday, October 3, 2015.

Breakfast at the hotel
10:00 -13:00 Demonstrations and contacts in the conference room
13:00 -15:00 Lunch at the hotel and meeting of the club leaders.
15:00 -19:00 MORE DEMONSTRATIONS and TI fun.
16:00 -17:00 Auction of TI products
19:00 -22:00 Treffen dinner in hotel with the Edgar Mauk Awards
22:00 -23.00 Closing of the second day

Sunday, October 4, 2015

Breakfast at the hotel
10:00 -12:00 DEMONSTRATIONS and contacts in conference room
12:00 -15:00 Visit of the 'Cold War Museum' in Nantwich
15:00 -18:00 Excursion of the city of Nantwich.
18:00 -20:00 Dinner in the Boot and Shoe Pub in Nantwich
20:00 -22.00 Return to hotel and conclusion of the 30th TI Treffen



Our Treffen Place Crewe Arms Hotel Nantwich Road

A Brief History

The Crewe Arms has been a focal point of Crewe since it was built in the 19th century. It is one of the few remaining buildings from the 19th century 'new town'.

Crewe was built and named after the railway station, built in 1837 with the locomotive works at the forefront. Naturally, as a result of the railway, The Crewe Arms was built in 1880, although other records show it was actually built in 1830's.

Whatever the date, The Crewe Arms was one of Britain's first railway hotels with its doors opening up onto the platform and remains an imposing brick red building at the gateway to Crewe. It certainly is a genuine local landmark.



Dancing the Night Away

Until 1983, the Crewe Arms boasted a first floor ballroom which hosted many important events and guests. Food was served from the main kitchen via a dumb waiter between the two floors - not only did the food travel this way - I will leave it to your imagination to what else was transported!

The years 1982/83 saw a quarter of a million pounds spent with the ballroom replaced by a more profitable area at the time - bedrooms. This work was done by Embassy Hotels before it was sold to Jarvis Hotels who continued to operate the hotel until it went into private ownership with the Moon family taking the reins. At this point, The Crewe Arms underwent a much needed multi-million

pound refurbishment, bedrooms were increased to 61, public areas, Sophia's restaurant and the seven conference rooms all brought back up to standard.

The outside was brought back to its imposing best and the car park resurfaced. The Moon family put the hotel back on the map as the place to go in Crewe through hard work and a dedicated team - many rewards and accolades followed.

During the first signs of recession, The Crewe Arms was sold to the present owner, who continues to take the hotel forward. At one point in the past, The Royal Hotel, just along Nantwich Road, was The Crewe Arms sister hotel and anyone who was not able to afford Crewe Arms prices were sent along to The Royal.

A Royal Affair

Arguably, the most famous is Queen Victoria on a stop over on her way to Scotland. A tunnel, which still remains today, was purpose built to protect her from the Cheshire weather and the public eye. This still remains today but is now blocked at either end. With today's weather, it would certainly be used in our modern day. The marble fire place in the lounge which was built still remains today, along with a bust of Victoria. Today's restaurant has Victoria very much in mind, Sophia's, named after Victoria's daughter.



Queen Victoria's visit to the Crewe Arms still leaves its mark on the hotel. From the fireplace in the lounge to the blocked up tunnel that once allowed the Queen to make her way from the station to the hotel in privacy, as well as the royal-named restaurants, Victoria's memory is alive and well.

Who Has Owned the Crewe Arms?

The Crewe Arms is currently in private ownership, this, however, has not always been the case. The Crewe Arms was owned by the railway up until it was sold to Embassy Hotels in 1969. It traded very successfully with a lively cocktail bar, where Sophia's is today, doing a roaring trade opening up onto the railway station. There was also a silver service restaurant on platform 4.

PLACES TO GO IN CREWE AND NANTWICH

CREWE

Crewe is a railway town and civil parish within the unitary authority area of Cheshire East and the ceremonial county of Cheshire, England. According to the 2001 census the urban area had a population of 67,683. Crewe is perhaps best known as a large railway junction and home to Crewe Works, for many years a major railway engineering facility for manufacturing and overhauling locomotives, but now much reduced in size. From 1946 until 2002 it was also the home of Rolls-Royce motor car production. The Pym's Lane factory on the west of the town now produces Bentley motor cars exclusively.

Although the name Creu first appears in the Domesday Book, the modern urban settlement of Crewe was not formally planned out until 1843 by Joseph Locke to consolidate the "railway colony" that had grown up since around 1840–41 in the area near to the railway junction station opened in 1837, even though it was called Crewe by many, from the start Crewe was thus named after the railway station, rather than the other way round.

Crewe was founded in the township of Monks Coppenhall which, with the township of Church Coppenhall, formed the ancient parish of Coppenhall. The railway station was named after the township of Crewe (then, part of the ancient parish of Barthomley) in which it was located. Eventually, the township of Crewe became a civil parish in its own right also named, rather confusingly, Crewe. This civil parish changed its name to Crewe Green in 1974 to avoid confusion with the adjacent town, which had been made a municipal borough in 1877.

The railway station remained part of the civil parish of Crewe, outside the boundary of the municipal borough until 1936. So, throughout its history, the town of Crewe



has neither been part of, nor has it encompassed first the township of Crewe, later the civil parish of Crewe, and later still the civil parish of Crewe Green adjacent to it, even though these places were the direct origin of the name of the town via the railway station which was also not part of the town before 1936. An old, local riddle describes the somewhat unusual states of affairs: "The place which is Crewe is not Crewe, and the place which is not Crewe is Crewe."

Until the Grand Junction Railway (GJR) company chose Crewe as the site for its locomotive works and railway station in the late 1830s, Crewe was a village with a population (c. 1831) of just 70 residents. Winsford, 7 miles (11 km) to the north, had rejected an earlier proposal, as had local landowners in neighbouring Nantwich, 4 miles (6 km) away. Crewe railway station was built in fields near to Crewe Hall and was completed in 1837.

TI-99/4A User Group UK – TI*MES Newsletter

A new town grew up, in the parishes of Monks Coppenhall and Church Coppenhall, alongside the increasingly busy station, with the population expanding to reach 40,000 by 1871. GJR chief engineer Joseph Locke helped lay out the town.

The town has a large park, Queen's Park (laid out by engineer Francis Webb), the land for which was donated by the London and North Western Railway, the successor to the GJR. It has been suggested that their motivation was to prevent the rival Great Western Railway building a station on the site, but the available evidence indicates otherwise.

The railway provided an endowment towards the building and upkeep of Christ Church. Until 1897 its vicar, non-conformist ministers and schoolteachers received concessionary passes, the school having been established in 1842. The company provided a doctor's surgery with a scheme of health insurance. A gasworks was built and the works water supply was adapted to provide drinking water and a public baths. The railway also opened a cheese market in 1854 and a clothing factory for John Compton who provided the company uniforms, while McCorquodale of Liverpool set up a printing works.

During World War II the strategic presence of the railways and Rolls-Royce engineering works (turned over to producing aircraft engines) made Crewe a target for enemy air raids, and it was in the flight path to Liverpool. The borough lost 35 civilians to these, the worst raid was on 29 August 1940 when some 50 houses were destroyed, close to the station.



Crewe crater on Mars is named after the town of Crewe. Crewe was described by author Alan Garner in his novel *Red Shift* as *the ultimate reality*. Bill Bryson described Crewe as *the armpit of Cheshire* in his 1995 book *Notes from a small Island*.

NANTWICH

The origins of the settlement date to Roman times when salt from Nantwich was used by the Roman garrisons at Chester (Deva Victrix) and Stoke-on-Trent as both a preservative and a condiment. Salt has been used in the production of Cheshire cheese and in the tanning industry, both products of the dairy industry based in the Cheshire Plain around the town. "Nant" comes from the Welsh for brook or stream. Wich and wych are names used to denote brine springs or wells. In 1194 there is a reference to the town as being called Nametwihc, which would indicate it was once the site of a pre-Roman Celtic nemeton or sacred grove.

In the Domesday Book, Nantwich is recorded as having eight salt houses. It had a castle and was the capital of a barony of the earls of Chester, and of a hundred (one of the seven sub-divisions of medieval Cheshire). Nantwich is one of the few places in Cheshire to be marked on the Gough Map, which dates from 1355–66. It was first recorded as an urban area at the time of the Norman conquest – the Normans burned the town to the ground leaving only one building standing.

The town is believed to have been a salt-producing centre from the 10th century or earlier. The Norman castle was built at the crossing of the Weaver before 1180, probably near where the Crown Inn now stands. Although nothing remains of the castle above ground, it affected the town's layout. During the medieval period, Nantwich was the most important salt town and probably the second most important settlement in the county after Chester.] By the 14th century, the town held a weekly cattle market at the end of what is today known as Beam Street, and was also important for its tanning industry centred on Barker Street.

This is Church's Mansion, one of the few buildings in Nantwich to survive the fire of 1583. A fire in December 1583 destroyed most of the town to the east of the Weaver. Elizabeth I contributed financially to the town's rebuilding, which occurred rapidly and followed the plan of the destroyed town. Beam Street, one of the main streets of Nantwich, was renamed to reflect the fact that timber (including wood from Delamere Forest) to rebuild the town was transported along it. A plaque marking the 400th anniversary of the fire and of Nantwich's rebuilding was unveiled by the Duke of Gloucester on 20 September 1984.



During the English Civil War Nantwich declared for Parliament, and consequently it was besieged several times by Royalist forces. The final, six-week-long, siege was lifted following the victory of the Parliamentary forces in the Battle of Nantwich on 26 January 1644, which has been re-enacted as Holly Holy Day on its anniversary every year since 1973 by the Sealed Knot, a registered charity devoted to re-enacting English civil war battles for educational purposes. The name comes from the sprigs of holly worn by the townsfolk in their caps or clothing in the years after the battle, in its commemoration.

The salt industry peaked in the mid-16th century, with around 400 salt houses in 1530, and had almost died out by the end of the 18th century; the last salt house closed in the mid-19th century. Nikolaus Pevsner considers the decline in the salt industry to have been the critical factor in preserving the town's historic buildings. The last tannery closed in 1974. The town's location on the London to Chester road meant that Nantwich served the needs of travellers from the medieval era. This trade declined in the 19th century, however, with the opening of Telford's road from London to Holyhead, which offered a faster route to Wales, and later when the Grand Junction Railway bypassed the town.

The Borough Council of Crewe and Nantwich was abolished on 1 April 2009; the civil parish is now administered by the new unitary authority of Cheshire East. Nantwich falls in the parliamentary constituency of Crewe and Nantwich,

TI-99/4A User Group UK – TI*MES Newsletter

Nantwich has the largest collection of historic buildings outside Chester in the county. The listed buildings are clustered particularly in the town centre on Barker Street, Beam Street, Churchyard Side, High Street and Hospital Street, and extending across the Weaver on Welsh Row. The majority are located within the 38 hectares (94 acres) of conservation area, which broadly follows the boundaries of the late medieval and early post-medieval town.

The oldest listed building is St Mary's Church, which dates from the 14th century and is listed at grade I. Two other listed buildings are known to pre-date the fire of 1583: Sweetbriar Hall and the grade-I-listed Church's Mansion are both timber-framed, "black and white" Elizabethan mansion houses. A few years after the fire, William Camden described Nantwich as the "best built town in the county", and particularly fine examples of timber-framed buildings constructed during the town's rebuilding include 46 High Street and the grade-I-listed Crown coaching inn. Many half-timbered buildings, such as 140–142 Hospital Street, have been concealed behind brick or render.

The town contains many Georgian town houses; good examples include Dysart Buildings, 9 Mill Street, Townwell House and 83 Welsh Row. Several examples of



Victorian corporate architecture are listed, including the former District Bank by Alfred Waterhouse. The most recent listed building is 1–5 Pillory Street, a curved corner block in 17th-century French style which dates from 1911. The majority of the town's listed buildings were originally residential; churches, chapels, public houses, schools, banks, almshouses and workhouses are also well represented. Unusual listed structures include a mounting block, twelve cast-iron

bollards, a stone gateway, two garden walls and a summerhouse.

Dorfold Hall is a Jacobean mansion in the nearby village of Acton. It is listed at grade I, and was considered by Pevsner to be one of the two finest Jacobean houses in Cheshire. Nantwich Show, including the International Cheese Awards, takes place in the hall's grounds each summer.

Nantwich Museum is on Pillory Street. It has galleries on the history of the town, including Roman salt making, Tudor Nantwich's Great Fire, the Civil War Battle of Nantwich (1644) and the more recent shoe and clothing industries. There's also a section on the local cheese-making industry. Hack Green Secret Nuclear Bunker, based a few miles outside the town, is a former government-owned nuclear bunker located in the village of Hack Green. It is now a museum. The 82-seat Nantwich Players Theatre is on Pillory Street in the centre of town. It puts on around five plays each year. Jan Palach Avenue in the south of the town commemorates the self-immolation of a student in Czechoslovakia in 1969.

Information from Wikipedia



The restaurants of the Treffen in Crewe

The Brocklebank

<http://www.brewersfayre.co.uk/pub-restaurant/Cheshire/Brocklebank-Crewe.html>



Sophia's Restaurant (in Crewe Arms Hotel)

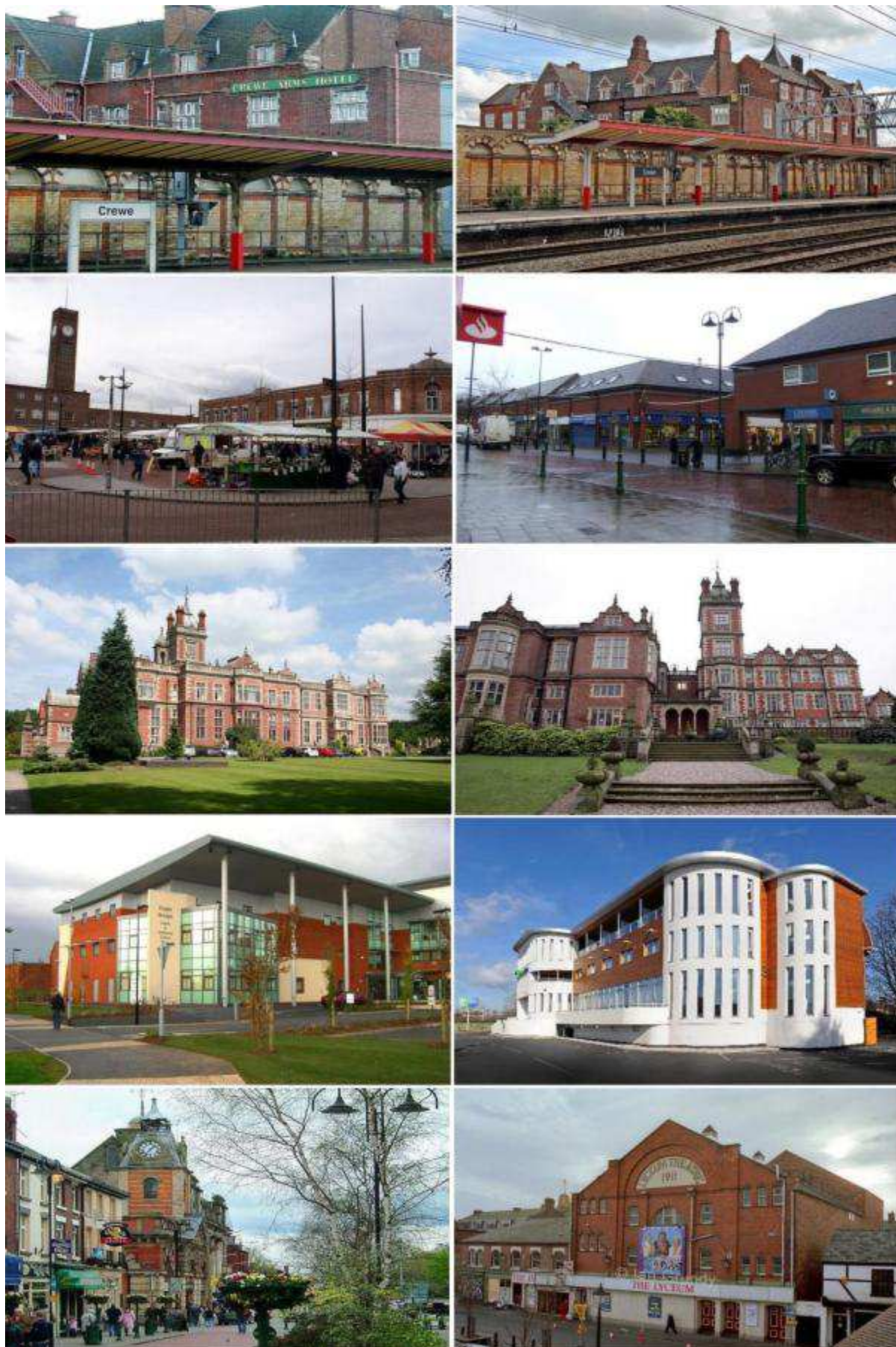
<http://www.crewearmshotel.com/dining/>



The Boot & Shoe (Nantwich)

<http://www.thebootandshoe.com/>





SOME PICTURES OF THE CITY OF CREWE

TIUGUK Membership Update May 2015

Please be aware all users in UK and some from abroad that our group needs your yearly membership fee, as this year it is **£ 9.00** and this goes towards New Software, Hardware, and with us now down to one venue per year such as our **Annual General Meeting** we are able to make it into a **three day event** which is more practical for users from afar, and as a rule these events cost, to hire a Meeting room or hall for three days would be any ware between £200 and £300 per weekend. We were able to get our Meeting room at this year's **CREWE TREFF** for free on condition our group can fill at least **15 b&b bedrooms** over the weekend for three nights. So you see these things have to be well organized in advance, and this is where your commitment comes into play, to say well in advance either you need rooms for the **TREFF** or you will be attending our **AGM** or you will be paying **MEMBERSHIP FEES**. I understand that members have been dwindling and that users have not had a sense of togetherness but now I feel we are now on track and back in business, so please rejoin and pay your subs, and we will do our very best to keep our group going for the foreseeable future. We also now have a regular TWICE per year TI*MES publication which has now been running from August 2013 and is distributed electronically by E-mail to now 136 users worldwide, and if you can attend an Annual General Meeting you will be supplied with an updated A5 paper booklet of the same at no extra cost. We now have a very easy way to pay if you have a **PayPal account**, just go to your account and one option will be to 'SEND MONEY' click on and send £ 9.00 to chairman@ti99ug.co.uk and put in comments box 'this is for MEMBERSHIP May 2015 to May 2016' it may cost about 50pence to send, depends on account. OTHER OPTIONS TO PAY

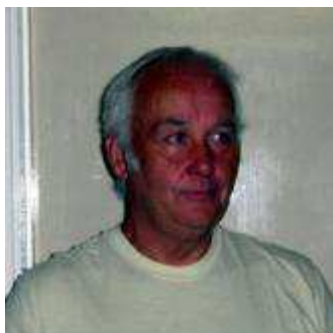
Contact: User Group Chairman: TREVOR STEVENS on +44 (0)1623406133 or cell: +44 (0)7968370589 and E-Mail: [support@taghosting.co.uk](mailto:support>taghosting.co.uk)

Or contact

Richard Twyning on richardtwyning@gmail.com or +44 (0) 7767445658
David Caine on cainehd@gmail.com or +44 (0) 7752052117

THANK YOU..

THE BOARD OF THE TIUGUK



TREVOR STEVENS

GROUP CHAIRMAN

support@taghosting.co.uk

0044 (0)7968 37 05 89



RICHARD TWYNING

TREASURER & SECRETARY

richardtwynning@gmail.com

0044 (0)7767 44 56 58



FRANCESCO LAMA

GROUP MEDIA LIBRARIAN

f.lama@ntlworld.com

Cassette, Disk and Module



DAVID CAINE

USER GROUP EDITOR

cainehd@gmail.com

0044 (0)7752 05 21 17



BERRY HARMSEN

CONTRIBUTING EDITOR

berry.harmsen@wxs.nl

Reporter from the Netherlands