

THE
DATA
BUS

THE DELAWARE VALLEY USERSGROUP

DEDICATED TO T.I. 99/4A HOME COMPUTER USER

P.O. BOX 6240 STANTON BRANCH WILMINGTON DE 19804

(meeting the 4th thur. monthly)

DuPont Country Club Fair

(by Lynn Acquard.)

Just wanted to thank every-
one who came to the computer
fair at the DuPont Country
Club. Once again, we had a
good turnout. Several members
brought their computers and
many others dropped by to chat
and give the others a break.
The show was nicely put
together, although it was not
as crowded as the University
of Delaware fair.
Unfortunately, I understand
there was not a great deal of
advertising of this fair, even
within DuPont. But, we did
have a good time, made some new
friends, and hopefully, gained
a couple of new members. I
also would like to announce
the search for a new
chairperson for the Equipment
Committee. Due to a
promotion, and further
complicated by a transfer, I no
longer feel I can do a good
job. The main problem is the
fact that I work shifts, and
cannot make all our
meetings. If anyone is
interested and would like more
information, please contact
Jack Thorpe, or myself, at
368-0609, or leave a message
on the BBS. Thanks and Happy
Computing!

- [] [] [] [] [] ~inside~ [] [] [] [] [] []
- Video-taping Meetings4.
- Gorilla Guide BBS2.
- Super Extended Basic3.
- Spellin Checkre3.

FOUNDATION 128K MEMORY

(by Stephen Lawless)

Based on comments made at
the last group meeting of
7/26, I feel obligated to
inform people about the 128K
memory. First, let me say
physically the card has been
very reliable. It is well
built and has not given me any
problems in the year I have
owned it.

Now, let me explain how it
works. With the way our
computer is arranged
internally, we can only have
32K of RAM. The 128K card is
actually 4 32K memories.
These "banks" are switched by
software commands (assembly
language). This is where the
problem lies. The software
must be written to use this
memory. For example:
Multiplan COULD use the
128K, but it does not.
Because Multiplan is not
written to use it.

The card does come with some
built in software that will
allow you to use the extra
memory as one 96K or 3 32K
files. This can be helpful if
you are writing programs that
use large amounts of data.
The reason I bought the card
was because of a single piece
of software promised by
Foundation, the Disk Emulator.
This would allow you to use
the extra memory as if it were
an 88K disk.

(Continued on page 2.)

FOUNDATION 128K
(by Steve Lawless)
(Continued from Page 1.)

The data or program could be accessed as a disk, but at Memory speeds. (i.e. instantly) Therefore greatly increasing execution speed on programs with much disk access. Using features in Multi-Plan you could divide a large spread sheet into several smaller ones then link them therefore virtually increasing memory. But, the disk emulator was promised by last summer, however it has not materialised yet. Each nasty letter or call to Foundation is answered with a nebulous "soon". In summary, IF the Disk Emulator software is finally produced, the 128K card will be a very useful asset to any system. Until then, the 128K card is a very well built, reliable piece of hardware, but at the present time it is virtually useless. (It will, of course function just like a 32K memory). At the present time, I would not recommend it to anyone but the very experienced programmer. If you have any more questions see me at the meeting. I will let you know if the emulator ever arrives.

*****VVVVV*****

NEW SOFTWARE LIBRARY

CHAIRPERSON

CHUCK LIGHTFOOT

*****VVVVV*****

The GORILLA GUIDE

(by Barry Boland)
(Continued from Vol. 2. No.8)

The last 'parameter' choice we have to make is "COLUMN WIDTH". Your choices are:

- 1-40
- 2-38
- 3-36
- 4-34

This means how many letters you get printed across the screen, sort of how wide the 'paper' is. Monitors (special TV's made to use just with computers) should have no trouble with a 40 column wide display. Televisions, however, sometimes will leave the first one or two letters at the very edge of the screen under the plastic border which is used around the picture tube. If you're using a TV, you may need to pick 38, or even 36 here to get all of the printing on the screen where you can read it. We'll try 40 first, to see if it works. If it doesn't, I'll tell you how to get back here to fix it at the appropriate time in our 'walk-thru' session. Press "ENTER" to accept 40 columns for now.

The very last choice on the set-up screen is marked "AUTO LOG-ON" and followed by "FILE=LOGON". This is for a file on disk which we will discuss in a later article (maybe), and is best left alone until you are comfortable using the TE II module without this feature. Just press "ENTER" for now. The screen should clear, the disk drive will spin (the little red light on the disk drive should come on) while the system looks for a disk file named DSK1.LOGON, and then you should hear a BEEP.

(Continued next month GORILLA)

99/4 AUTO SPELL-CHECK
(by Jack Thorpe)

A very good spelling checker is here from Dragonslayer American Software Company.

After typing in the name of your file the program goes to work looking through you text for words that aren't in it's Dictionary, but it doesn't stop there it continues to look and then asks for another dictionary, but you may just hit enter and it is off and running again. (20,000 words can't sit on the head of a pin). Finally it stops and asks for your dictionary Yes your very own dictionary with words peculiar to your environment, like "DuPont", "Editor /Assembler", etc.

You will then be shown your errors with multiple choices.

- (D) Disregard
- (A) Add to User Dict
- (C) Type correctly
- (V) View in context
- (P) Previous Word (VIEW)

When all the words are shown to you, it will ask you if you want your user dictionary updated to show the words that have you've added. Slow if you forget it's checking 20,000 words plus your personal dictionary.

\$52.95 including shipping and handling this program is worth it. From DRAGONSLAYER AMERICAN SOFTWARE COMPANY 2606 Ponderosa Dr. Omaha, NE. 68123.

```

{}{}{}{}{}{}{}{}{}{}{}{}{}{}{}{}{}
{}{}{}{}{}{}{}{}{}{}{}{}{}{}{}{}{}
/ \
{} - NEXT MEETING - {}
{} {}
{} AUGUST 23, 1984 {}
\ /
{}{}{}{}{}{}{}{}{}{}{}{}{}{}{}{}{}
{}{}{}{}{}{}{}{}{}{}{}{}{}{}{}{}{}

```

After Extended Basic
(by Jack Thorpe)

If you are a programmer or a would be programmer, you'll want "SXB" SUPER EXTENDED BASIC. from J & K H Software 2820 S. Abingdon St. Arlington, VA 22206

Using SXB will allow you to do integer math, to set up your own data base, convert readable hex to binary and back, swap strings, snip and trim strings, encode your data and decode with your own passwords, make your own Assembly Language Subroutines, and it even does windows.

You write your Extended Basic as before but instead of writing out entire sort routines. You might type in: 600 CALL LINK("DBKEYS",CHR\$(12),CHR\$(1),CHR\$(5))

This command sets up your database to include 12 characters(key), search from the first letter up to 5 letters.

Input your A1\$(I) data then- 610 CALL LINK("DBSORT",A1\$(I),V) NOTE: () is a correct command.

This command sorts the data in all of the A1\$ strings, and in the V is the error check no. 620 CALL LINK("VMWNDW",1,3,24,30)

This sets up a window, with the first Row of 1, the first col. of 3, the last row of 24 and the last column of 30.

There are over 100 such routines in SXB. J & K H SOFTWARE has a very good delivery time. SXB normally sells for \$99.95. Our club can make 1 bulk purchase for \$69.00 EACH. AT OUR NEXT MEETING WE WILL COLLECT THIS MONEY IF YOU WANT IT BE THERE THEN WE WILL SEND THE ORDER IN THE NEXT MORNING.

RAFFLE RAFFLE RAFFLE
FOR PAID-UP MEMBERS -ONLY-

We are planning to raffle of a piece of COR-COMP equipment, the most expensive componet includes the 32k memory expansion and the RS 232 and the Disk Drive controller.

VIDEO TAPING OUR MEETINGS

Our meetings are now being Taped to allow members who live to far away to get to the meetings. We finally have something to offer the many people who have expressed a wish to join our club but live too far from Delaware to actually come to our meetings.

In the past we have discouraged these people as we could not take their money to join and they not be able to attend the meetings. Now they will attend by sending us a blank VHS tape we will send it back with the last meeting on it.

OUR LAST MEETING 84.07.26

At our last meeting we saw the 99/4A disassembled, cleaned by Jim Davis(Program Chairperson) and Tom August (Vice President) this is available on tape (VHS) and has very good close-ups of the inside of the machine.

OUR TI-BBS IS 322-3999

DOWN LOADING FROM OUR BBS

At our last meeting we discussed a program that Barry Boland had from compuserve. I am sorry to report that program has the same problem; gives an error of "LINE TOO LONG IN 100" We still need to write our own

"CALLING CAR 54, WHERE ARE YOU"
DATA BUS has been returned from:

USG OF ORANGE COUNTY
SUITE 172 3941 B.S. BRISTO
SANTA ANA CA 92704

RETURN TO SENDER NOT
DELIVERABLE If you know anything about this send us the word at the address on our mast head.

NEW RADIO PROGRAM ON COMPUTERS

Dr. SANDY WEINBERG
Hosts "COMPUTER TALK"
Every Saturday from:
1:00pm to 3:00pm

at 1210 on your AM RADIO dial
Dr. Sandy Weinberg visited the DuPont Computer Fair and stopped by to see our set-up.

The HOME COMPUTER MAGAZINE

Better know as "when it gets here" will no longer carry advertising in it's regular issues. Instead it will put out a periodical that carries nothing but advertising.

Quartz Mill Computers

ANNOUNCES

***** USED EQUIPMENT *****

Stand-Alone Disk Controller
Stand-Alone Disk Drive

NEW *PE Box System* NEW
(Box)
(32K Memory)
(Disk Controller Card)
(RS232 Card)
(Internal Disk Drive)

ONLY\$ 499.99

(All TI Componets)
(below DEALER COST)

*****NEW NEW NEW NEW NEW*****

WE NOW CARRY MBC PRINTERS

Priced at ONLY... \$262.50

NEW LOW PRICE ON NEC 8023AC

Priced at ONLY... \$360.00

GEMINI 10X PRINTER \$295.00

QUARTZ MILL COMPUTER

25 Quartz Mill Road
NEWARK, DE. 19711
(302) 239-6714

*****COMING SOON!!!!*****

The COR-COMP COMPUTER!!!
*TI Compatible
K RAM
*Super Keyboard

The COR-COMP EXPANSION SYS.
(Built-in RS232, 32K, Disk)
(PLUS 3 MORE EXPANSION SLOTS)

Watch this ad for more detail!

NOW AVAILABLE

The SANYO Computer

IBM Compatible

128K RAM

Printer Port

80 Column

high resolution color

Disk Drive

Call for a home trial

*****SOFTWARE*****

We have new and pre-owned
Texas Instruments Software

USED TI-WRITER \$40

X-BASIC CARTRIDGES IN STOCK

LETTER QUALITY PRINTERS

STAR (GEMINI)POWER TYPE \$410

SILVER-REED # 500 \$450

))))))~))))))

DELAWARE AMATEUR SUPPLY

71 Meadwood Road

New Castle, DE. 19720

(302) 328-7728

Single Sided

Single Density

ONLY

19.95

per box of 10 disks

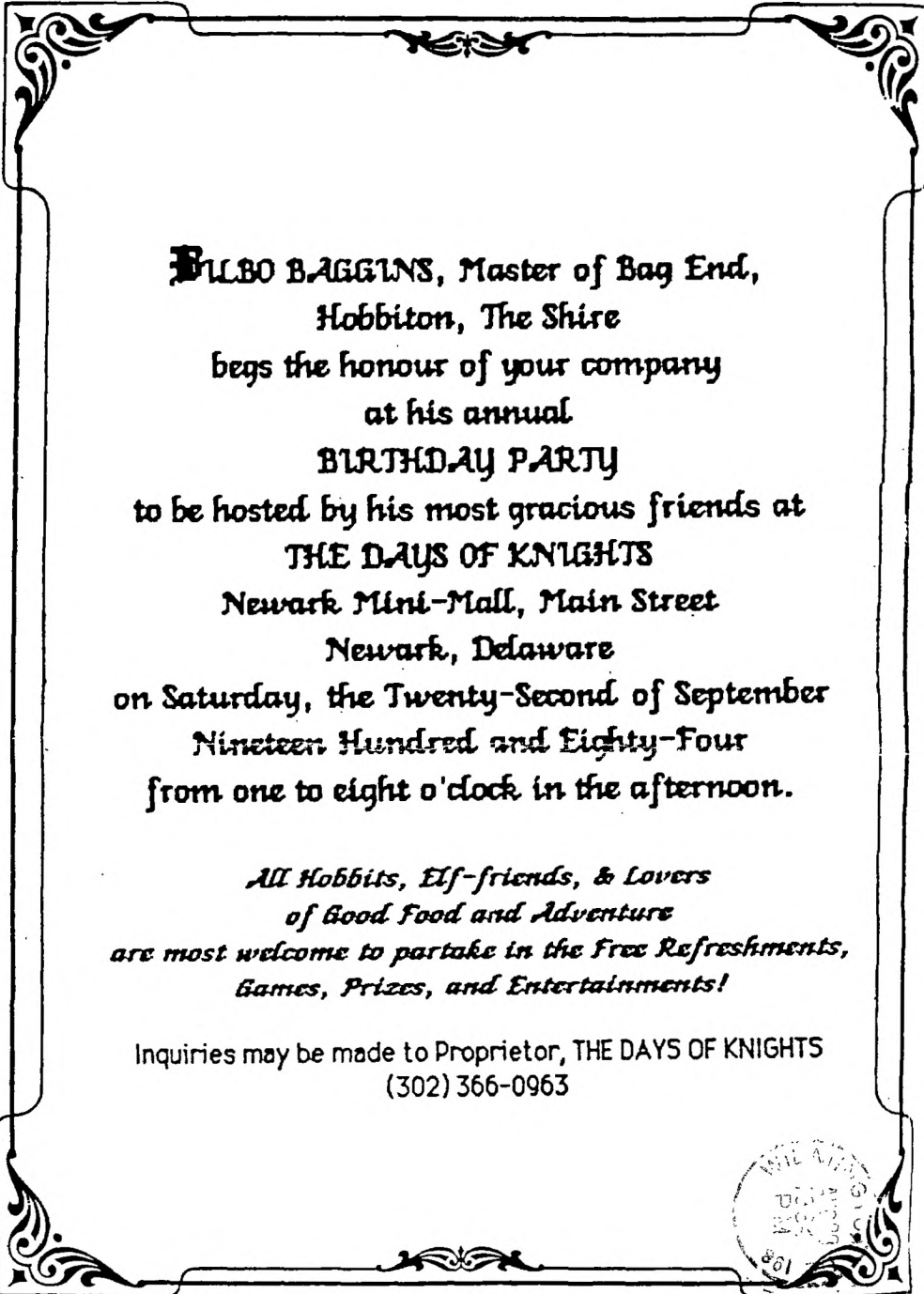
))))))~))))))

DELAWARE VALLEY USG

P.O. BOX 6240

STANTON BRANCH

WILMINGTON, DE. 19804



EDMONTON USER'S GROUP
P.O. BOX 11983 EDMONTON
ALBERTA CANADA T5J-3L1

