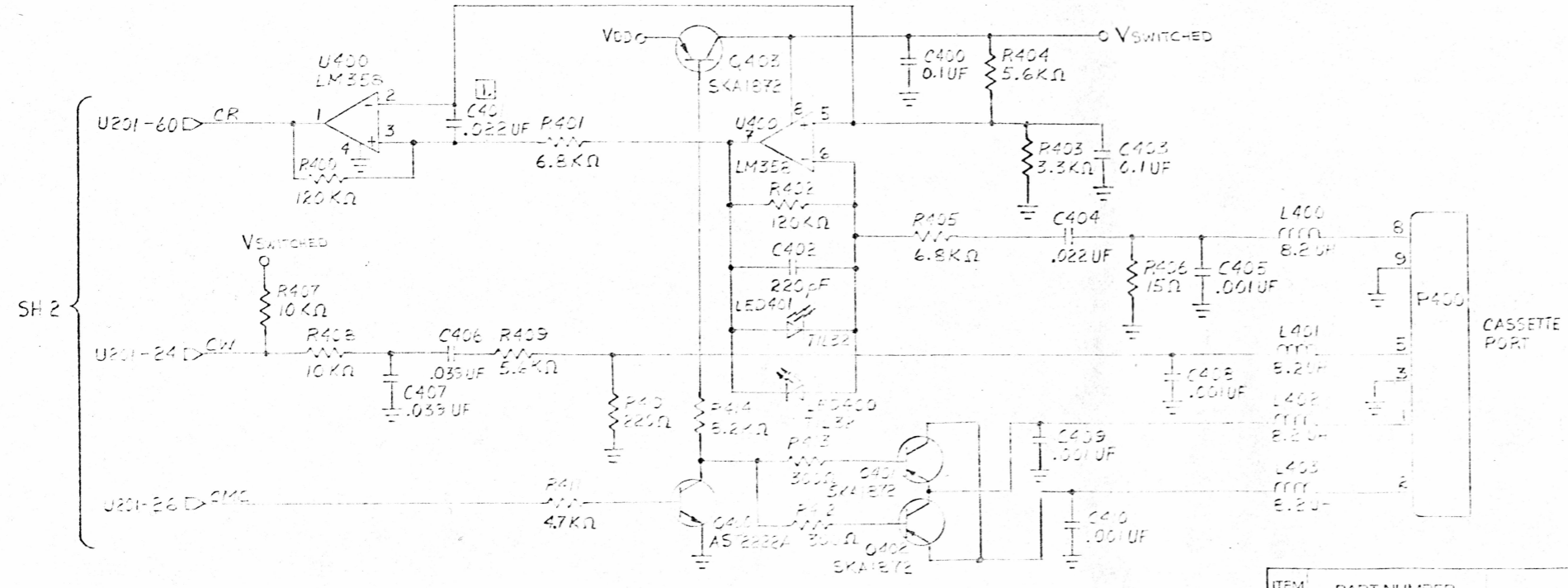
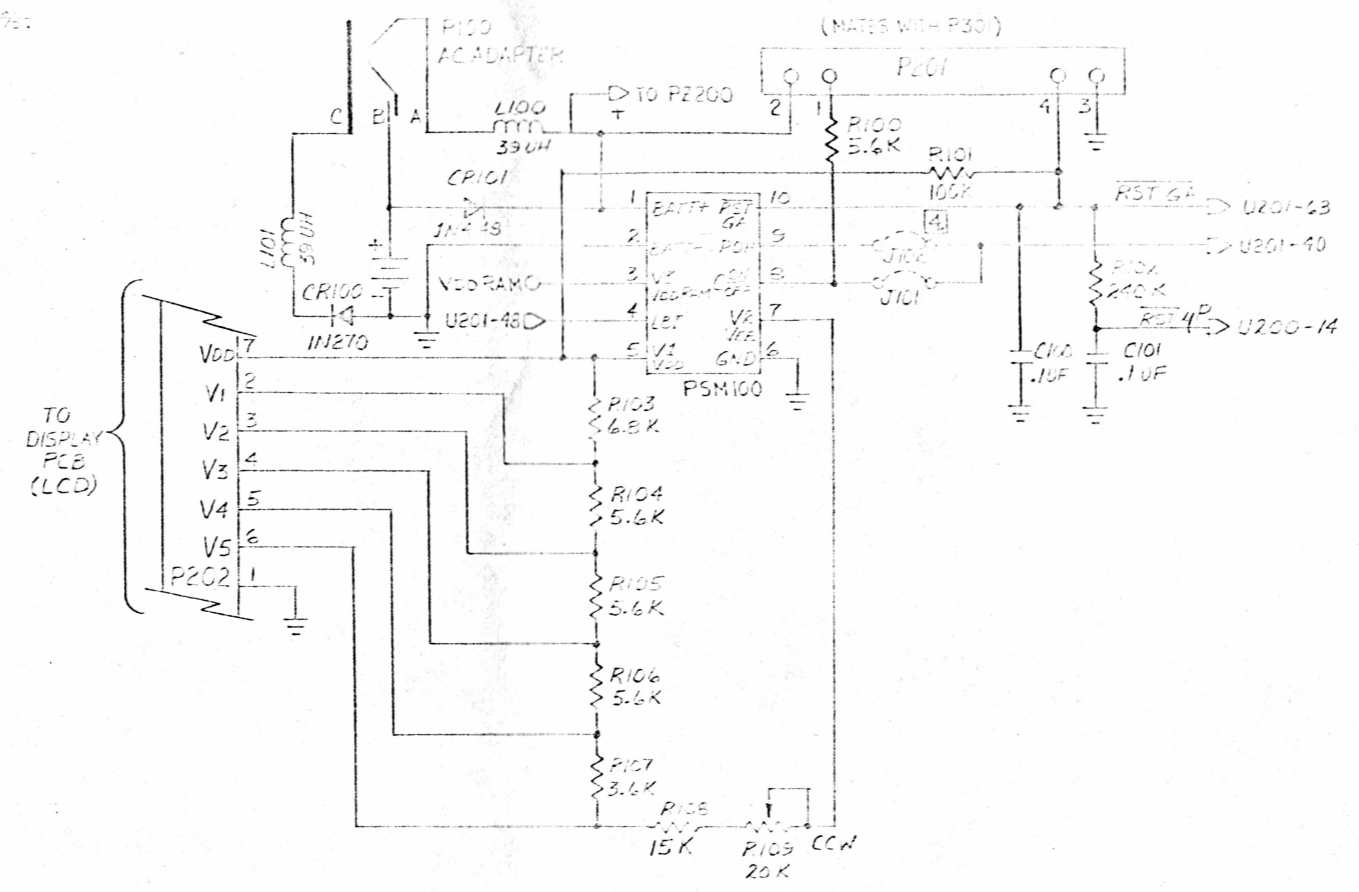


NOTES - UNLESS OTHERWISE SPECIFIED

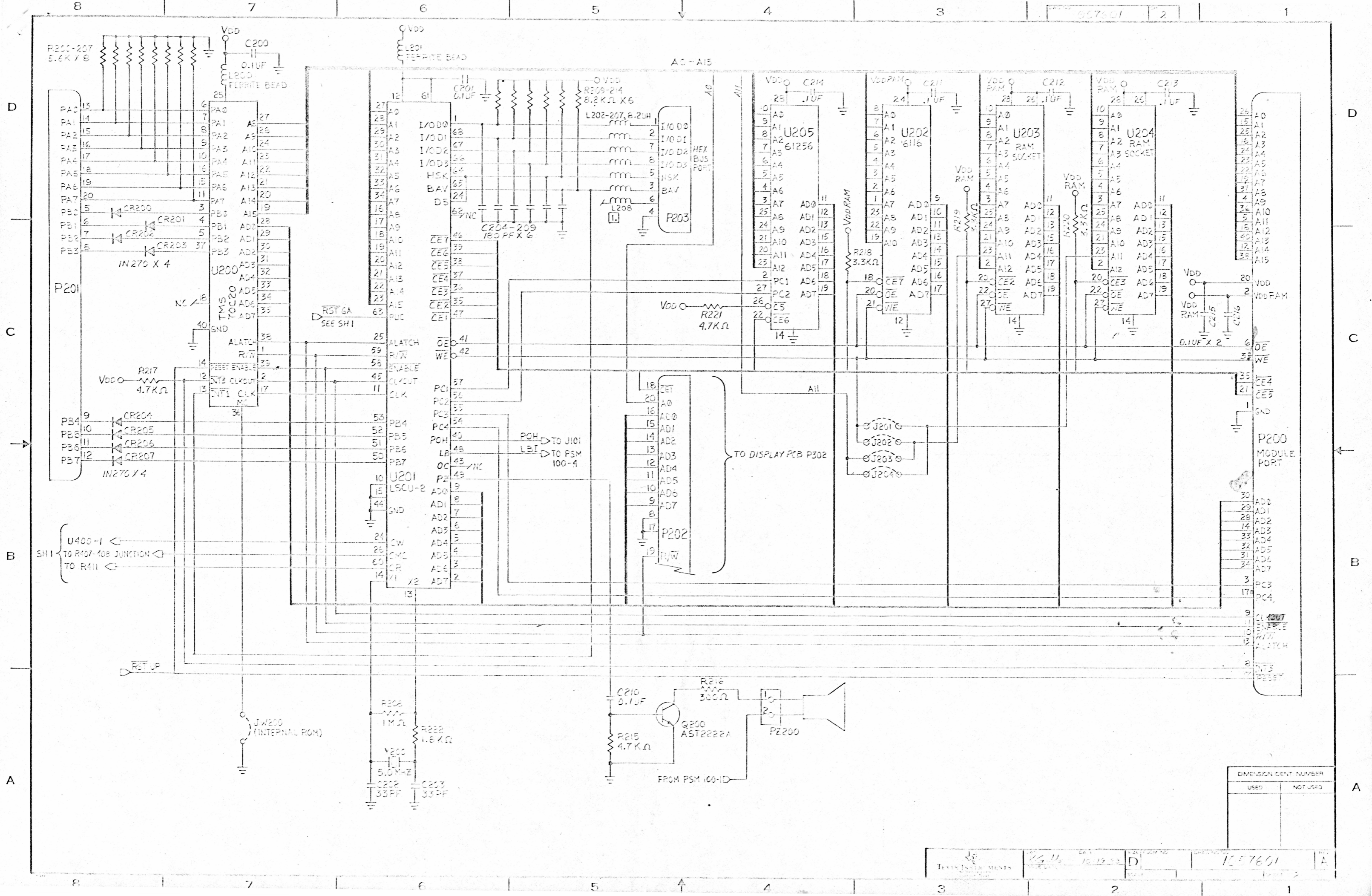
- 1. NOT CURRENTLY INSERTED.
- 2. PCB SPACING VALUES ARE IN CIRCLES. STANDARD VALUES ARE 1/4 W, 1/5 W.
- 3. CAPACITANCE VALUES ARE IN MICROFARADS.
- 4. USE ONLY J101. J102 IS NEVER INSERTED.

REVISIONS			
REV	DESCRIPTION	DATE	APVD
FORMAL RELEASE			
A	PCN 108671 K.G.J. 1-4-84	1-4-84	K.G.J.
SH 1 - DELETE NOTES 2,3; ADD NOTE 4; CHANGE NOTE 1			
SH 2 - REDRAW J201-204 CIRCUIT; MINOR REVISIONS			
SH 3 - LABEL P301 PINS; CHANGE P302 PIN LABELS			

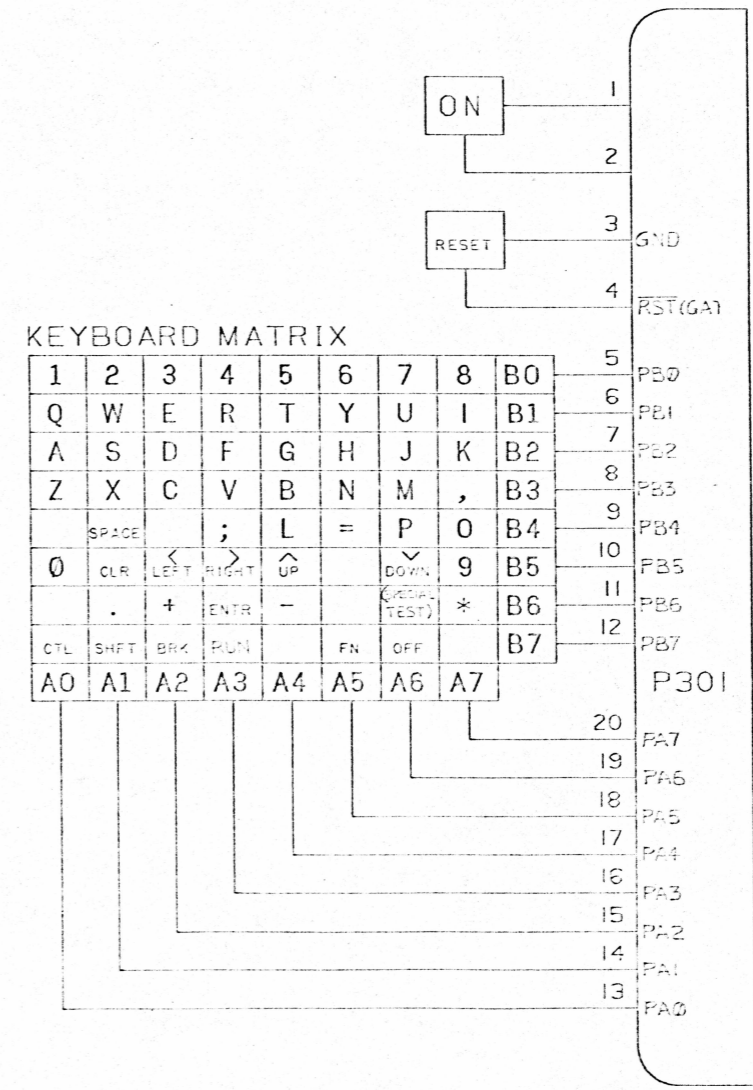
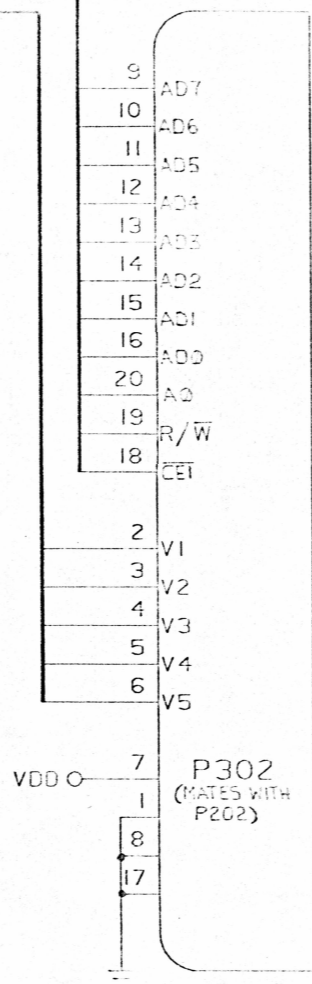
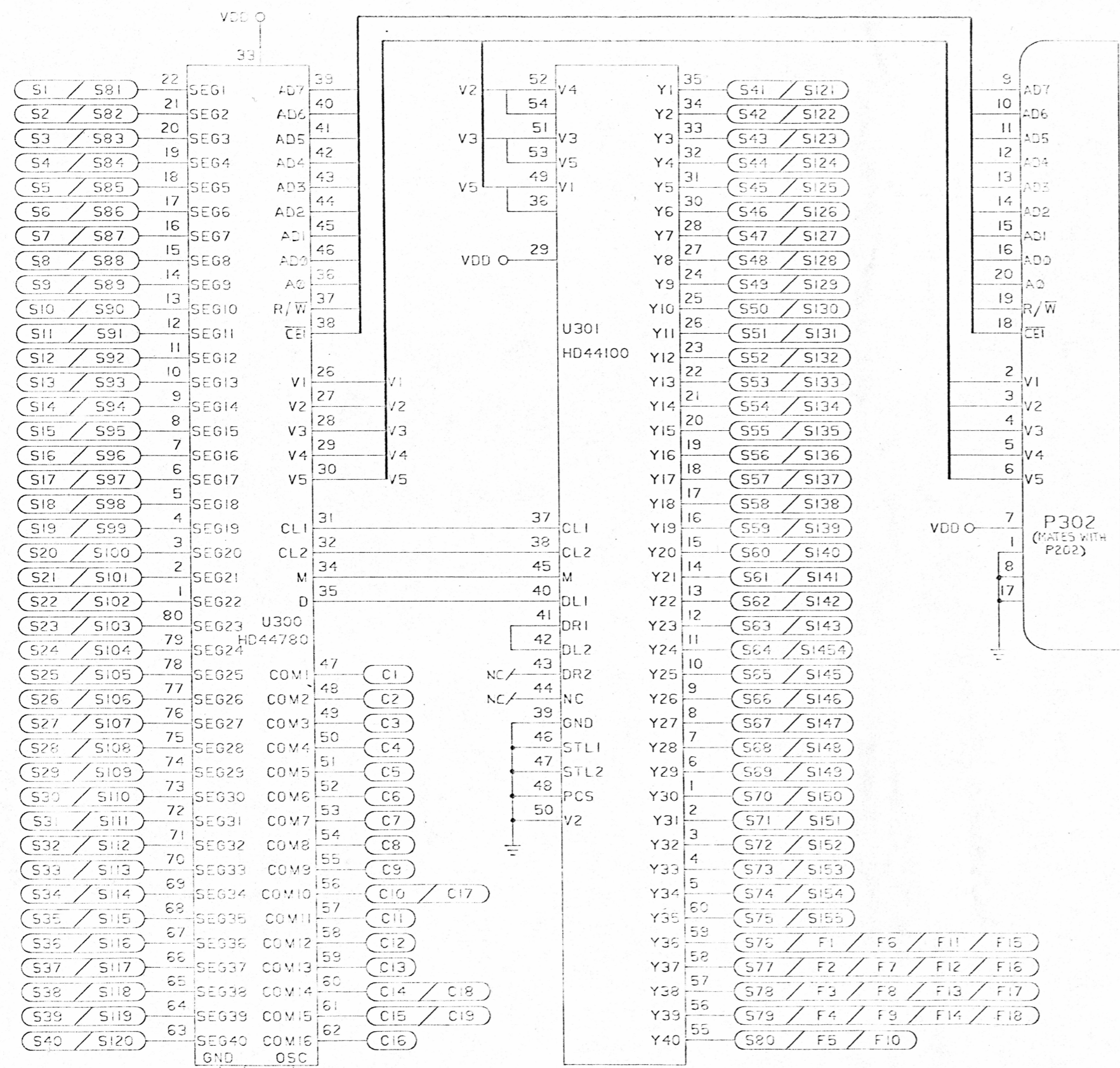


CASSETTE INTERFACE CIRCUIT

ITEM NO.	PART NUMBER	DESCRIPTION	MATERIAL	REMARKS
PARTS LIST				
<div style="display: flex; justify-content: space-between;"> <div> <p>DESIGNER: K.G.J.</p> <p>DATE: 10-20-83</p> <p>10/1/83</p> </div> <div style="text-align: right;"> <p>TEXAS INSTRUMENTS INCORPORATED CONSUMER PRODUCTS GROUP LUBBOCK, TEXAS</p> </div> </div>				
SCHEMATIC PRODUCT 477A				D
1057601				1 OF 3



DIMENSION IDENT NUMBER	
USED	NOT USED



D  
C  
B  
A

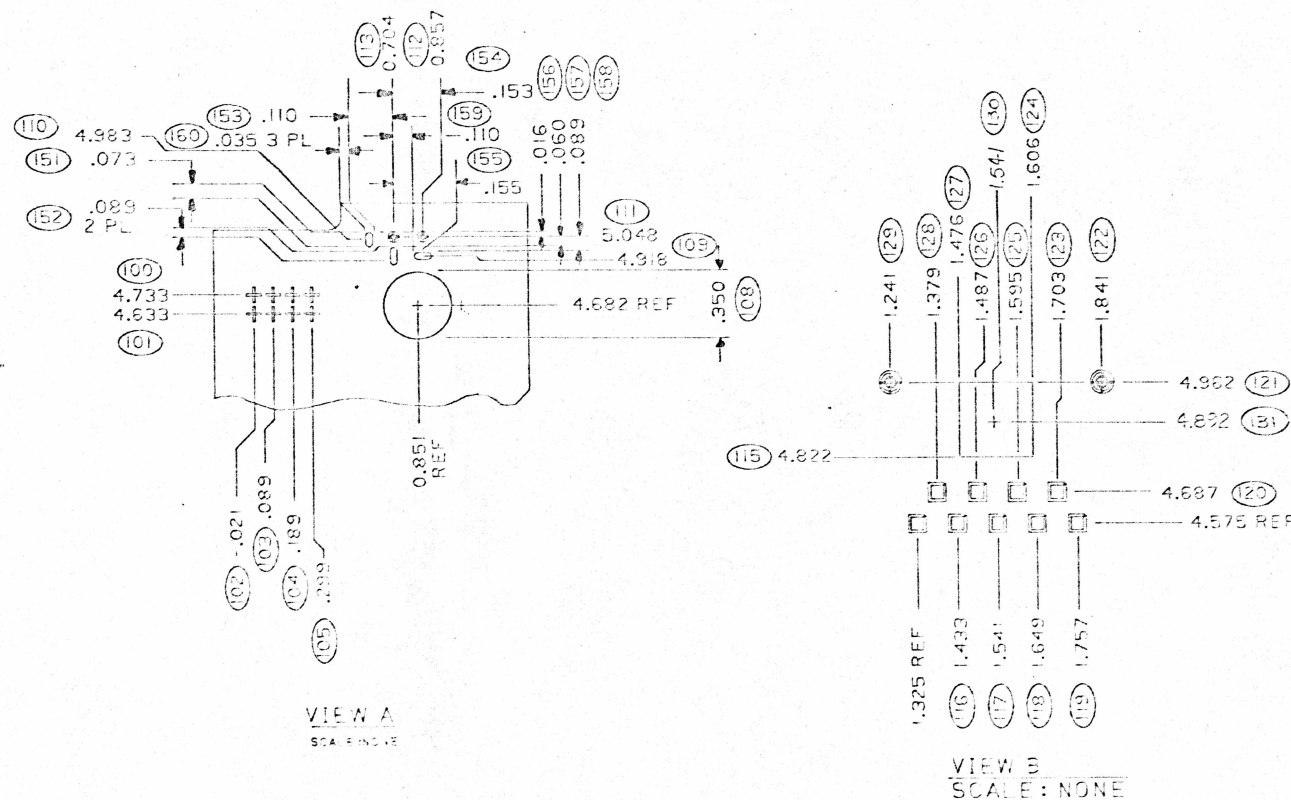
D  
C  
B

UNLESS OTHERWISE SPECIFIED		DATE: <i>KGills 12-1-83</i>	TEXAS INSTRUMENTS INC. CONSUMER PRODUCTS DIVISION LUBBOCK, TEXAS
• DIMENSIONS ARE IN INCHES	• TOLERANCES: ANGLES ± 5°	• DIMENSIONS IN ACCORDANCE WITH ANSI Y14.5	SCHEMATIC PRODUCT 477 DISPLAY PCB
• DIMENSIONS IN ACCORDANCE WITH ANSI Y14.5	• DIMENSIONS IN ACCORDANCE WITH ANSI Y14.5	• DIMENSIONS IN ACCORDANCE WITH ANSI Y14.5	
DO NOT SCALE THIS DRAWING		477	1057601

NOTES: UNLESS OTHERWISE SPECIFIED:

01. NO EXTERNAL TOOLING HOLES THIS DRAWING.
02. MINIMUM ANNULAR RING .001 EXCEPT BREAK OUT PERMITTED ON TRIMMED PADS.
03. MAXIMUM INTERNAL RADIUS - .031. MAXIMUM EXTERNAL RADIUS - .031.
04. NO DEBURR REQUIRED.
05. CRAZING AND DELAMINATION WITHIN A MAXIMUM OF .030 INCH OF BOARD PERIMETER SHALL BE ACCEPTABLE.
06. ALL HOLES TO BE WITHIN 0.012 INCH TRUE POSITION OF DATUM O WHEN PINNED TO PLANES A-A B-B.
07. ALL HOLES NOT DIMENSIONED ARE ON .025 INCH GRID INCREMENTS IN RELATION TO DATUM O.
08. DECIMAL HOLE DIAMETERS AND TOLERANCES GOVERN HOLE SIZE. NUMBERS IN PARENTHESIS ARE FOR REFERENCE ONLY.
09. FINISHED PCB CONDUCTOR WIDTH AND SPACING TO BE AS SHOWN ON MASTER PATTERN WITHIN ±.004. MINIMUM ARTWORK CONDUCTOR WIDTH AND SPACING TO BE .012 INCH.
10. BOARD WARP OR TWIST SHALL NOT EXCEED .020 INCH PER INCH LENGTHWISE AND SHALL NOT EXCEED .018 INCH PER INCH CROSSWISE.
11. NO CLEARANCE REQUIRED FROM CONDUCTOR TO EDGE OF BOARD, SLOTS, OR UNSUPPORTED HOLES.
12. MATERIAL SHALL BE .031 THICK NEMA GRADE FR-4 OR G-10 WITH 1 OZ. COPPER BOTH SIDES.
13. PROCESS: TIN LEAD PLATE, .0001 MIN THK TO .0003 MAX THK. PER QQ-5-5-571. "REFLOWED" BEFORE SOLDER MASK IS APPLIED.
14. SOLDER MASK SHALL BE SCREENED ON BOTH SIDES USING PC401 OR APPROVED EQUIVALENT. COLOR TO BE GREEN.
15. SOLDER MASK PERMITTED TO COVER TIN-LEAD PLATED AREAS GREATER THAN .250 INCH SQUARE.
16. ASSEMBLY NUMBER NOT REQUIRED ON BOARD.
17. FEEDTHRU ALLOWED TO BE BURIED IN GROUND PLANE.
18. FEEDTHRU ALLOWED TO BE COVERED BY SOLDER MASK.
19. MARK PER ANSI Y32, 16-1968, METHOD SILK SCREEN, HEIGHT PER ARTWORK PROVIDED, COLOR CONTRASTING (F100, METHOD 1, CLASS II)
20. REGISTRATION MARKS TO BE USED FOR POSITIONING MARKING AT HOLES SHOWN.
21. 100% ELECTRICAL TESTING REQUIRED OF VENDOR.
22. THE QUALITY OF THIS PRODUCT SHALL SATISFY ALL OF THE PREFERRED OR ACCEPTABLE CHARACTERISTICS FOR CLASS 2 (GENERAL-INDUSTRIAL) PRINTED CIRCUIT BOARDS OF THIS TYPE, DESCRIBED IN IPC-A-600C. SOLDER MASK QUALITY SHALL SATISFY CLASS 2 PERFORMANCE REQUIREMENTS DESCRIBED IN IPC-SM-840.
23. ALL BOARDS ARE TO BE MARKED WITH AN IDENTIFYING CAVITY NUMBER.
24. SOLDER MASK ALLOWED TO BLEED A MAXIMUM OF .005 ONTO THE PAD.
25. INTERNAL INDEXING HOLES MAY BE EITHER UNSUPPORTED OR PLATED-THRU AT VENDOR'S OPTION.
26. REVISION LEVEL TO BE STAMPED IN DESIGNATED LOCATION AS SHOWN "REV."

FORMAL RELEASE	
A	NO ECN <i>San Cam</i>
B	ECN 10557E <i>San Cam</i> 2/23/84 ADD END TO PIN 6 OF I/O CONN; 2) ADD NOTE 26, 2) ADD DIM & DIM. IDENT NUMBERS. <i>2-23-84</i>



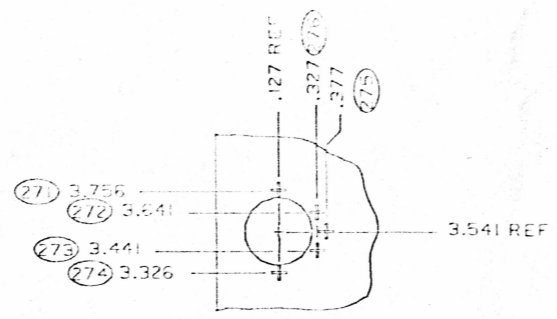
MARKING (SILKSCREEN)	A	B
CONDUCTOR SIDE SOLDER MASK	-	-
COMPONENT SIDE SOLDER MASK	-	-
CONDUCTOR SIDE (LAYER 21)	-	-
COMPONENT SIDE (LAYER 11)	-	-
HOLE CONFIG. DRILL DECK	-	-
DRILL PLAN (THIS SHEET)	-	-
INVENTORY CONTROL (DAS, NOL)	-	-

477A	USED ON APPLICATION
------	---------------------

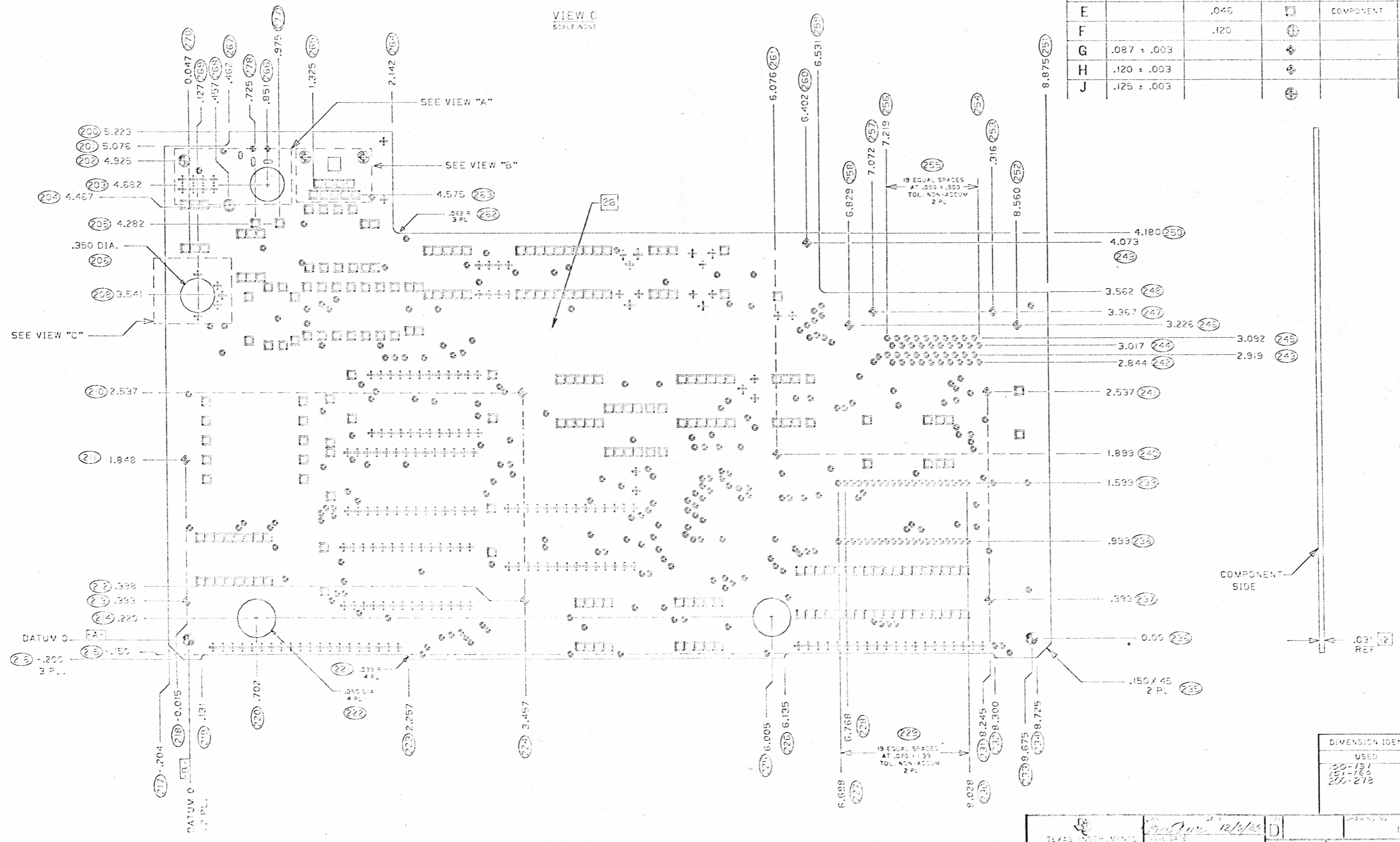
UNLESS OTHERWISE SPECIFIED:  
 • DIMENSIONS ARE IN INCHES  
 • TOLERANCES: ANGLES ± 5°  
 3 PLACE DECIMALS ± 0.005  
 2 PLACE DECIMALS ± 0.02  
 • DIMENSIONS IN ACCORDANCE WITH ANSI Y14.5  
 • NUMBERS IN PARENTHESIS AND DIAMETERS ARE FOR DIMENSION IDENTIFICATION ONLY  
 • DO NOT SCALE THIS DRAWING

W. BOBERVIN  
*Paul Hill 12/6/83*  
*1/1/84*  
*1/1/84*  
*1/1/84*  
*1/1/84*

TEXAS INSTRUMENTS INC. CONSUMER PRODUCTS DIVISION LURBOCK, TEXAS	
PRINTED WIRING BOARD, PRODUCT 477	
D MP/SI	1057604



HOLE SCHEDULE					
HOLE	UNSUPPORTED ±.004 ±.001	PLATED-THRU ±.002 ±.002	SYMBOL	FUNCTION	NOTES
A	VENDOR'S OPTION	VENDOR'S OPTION	⊕	EXTR. INDX	
B	.127 ± .002	.128 ± .003	⊕	INTL INDX	VENDOR'S OPTION
C		.031	⊕	FEEDTHRU	
D		.039	⊕ ⊕	COMPONENT	
E		.046	⊕	COMPONENT	
F		.120	⊕		
G	.087 ± .003		⊕		
H	.120 ± .003		⊕		
J	.125 ± .003		⊕		



DIMENSION IDENTIFICATION NUMBERS	
USED	NOT USED
100-131 151-182 200-212	106, 107, 116, 132- 150 207, 209