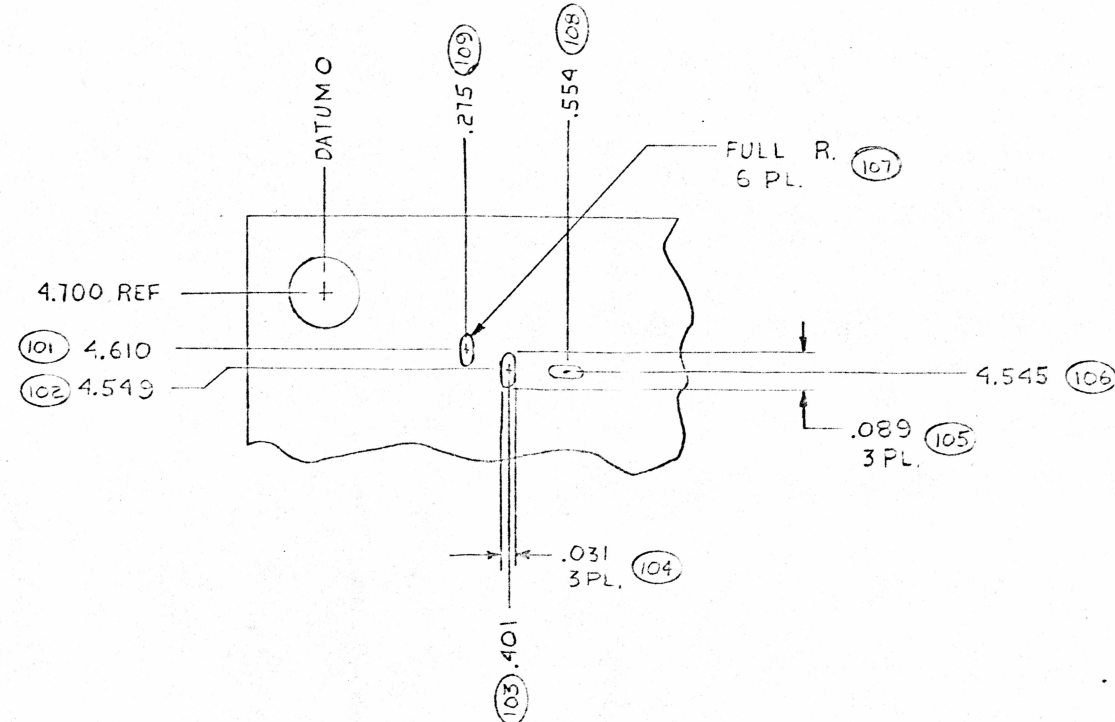


NOTES: UNLESS OTHERWISE SPECIFIED

- 01. EXTERNAL TOOLING HOLE DIMENSIONS
- 02. MINIMUM ANNULAR RING .001 EXCEPT BREAK OUT PERMITTED ON TRIMMED PADS.
- 03. MAX. INTERNAL RADIUS .022 MAX. EXTERNAL RADIUS .063
- 04. NO DEBURR REQUIRED.
- 05. CRAZING AND DELAMINATION WITHIN A MAX. OF .030 BOARD PERIMETER SHALL BE ACCEPTABLE.
- 06. HOLE LOCATION ~~±.014 (S) PPS OR ±.010 (M) (M)~~
- 07. ALL HOLES NOT DIMENSIONED ARE ON .025 INCH GRID INCREMENTS IN RELATION TO DATUM O.
- 08. DECIMAL HOLE DIAMETERS AND HOLE TOLERANCES GOVERN HOLE SIZE. ~~NUMBERS IN PARENTHESES ARE FOR REFERENCE ONLY.~~
- 09. FINISHED ARTWORK CONDUCTOR WIDTH AND SPACING TO BE AS SHOWN ON MASTER PATTERN ± .004.
- 10. BOARD WARP OR TWIST SHALL NOT EXCEED .020 INCH PER INCH LENGTHWISE AND SHALL NOT EXCEED .018 INCH PER INCH CROSSWISE.
- 11. NO CLEARANCE REQUIRED FROM CONDUCTOR TO EDGE OF BOARD AND SLOTS.
- 12. MATERIAL SHALL BE .062 THK NEMA GRADE FR-4 OR G-10 WITH ONE OZ. COPPER BOTH SIDES.
- 13. PROCESSES: TIN LEAD 60/40 PLATE, .0003 THK MIN, PER 00-5-571 "REFLOWED" BEFORE SOLDER MASK IS APPLIED.
- 14. SOLDER MASK SHALL BE SCREENED ON BOTH SIDE S USING PC 401 OR APPROVED EQUIVALENT. COLOR TO BE GREEN.
- 15. SOLDER MASK IS PERMITTED TO BLEED ON PADS OF CONDUCTOR SIDE WHERE PADS ARE TRIMMED AND ON COMPONENT SIDE OF BOARD.
- 16. MARK PER ANSI Y32. 16-1968, METHOD SILK SCREEN, HEIGHT PER ARTWORK PROVIDED, COLOR CONTRASTING (F100, METHOD 1, CLASS 1).
- 17. REGISTRATION MARKS TO BE USED FOR POSITIONING MARKING AT HOLES SHOWN.
- 18. ~~THIS PWB IS AN UL-RECOGNIZED COMPONENT AND, SUCH AS, MUST DISPLAY THE VENDORS MARK RECOGNIZED BY UL IN THE AREA OF THE PWB INDICATED.~~
- 19. SOLDER MASK ALLOWED TO BLEED A MAX. OF .005 ONTO THE PAD.
- 20. ~~NO ANNULAR RING REQUIREMENTS ON OVAL PADS.~~
- 21. SOLDER MASK PERMITTED TO COVER TIN-LEAD-PLATED COPPER AREAS GREATER THAN .250 INCH.
- 22. NOT REQUIRED ASSY NO AND BOARD REF. DESIG.
- 23. SOLDER MASK ALLOWED TO COVER FEED-THRU.
- 24. ALL HOLES TO BE WITHIN 0.014-INCH TRUE POSITION OF DATUM O WHEN TO PLANE A AND PLANE B.
- 25. LINE WIDTH FOR SILKSCREEN ALLOWED TO BE .010.
- 26. SLOTS ARE PLATED THRU.

REVISIONS			
ZONE	LTR	DESCRIPTION	DATE



VIEW A
SCALE: NONE

J	.115 ±.003	
H	.170 ±.003	
G	.060 ±.003	
F	.094 ±.003	
E	.046 ±.003	
D	.039 ±.003	
C	.031	UNLETTERED
B	.125 ±.003	INTL TOOLING
A	SHOP OPTION	EXTL TOOLING
	UNSUPPORTED PLATED THRU	
	±.004	REMARKS
LTR	FINISHED HOLE DIA	

HOLE SCHEDULE

INVENTORY CONTROL NUMBER	1	2																		
THIS DRAWING	-	-																		
HOLE CONFIGURATION	-	-																		
DRILL DECK	-	-																		
LAYER 1 (COMP. SIDE)	-	-																		
LAYER 2 (COND. SIDE)	-	-																		
MARKING	-	-																		
CONDUCTOR SIDE																				
SOLDER MASK																				
COMPONENT SIDE																				
SOLDER MASK																				

REVISION LEVEL CONTROL

DIMENSION IDENTIFIERS	
LAST USED	NOT USED
(223)	110-200

UNLESS OTHERWISE SPECIFIED
 • DIMENSIONS ARE IN INCHES
 • TOLERANCES
 ANGLES ±
 3 PLACE DECIMALS ± .010
 2 PLACE DECIMALS ± .02
 • DIMENSIONS IN ACCORDANCE WITH MIL STD 130

OWN: *William B. ...* 2 DATE: 1-21-83
 BY: *...* B 2/1/83
 CHECKED: *...* 2/2/83
 TOOLING ENG

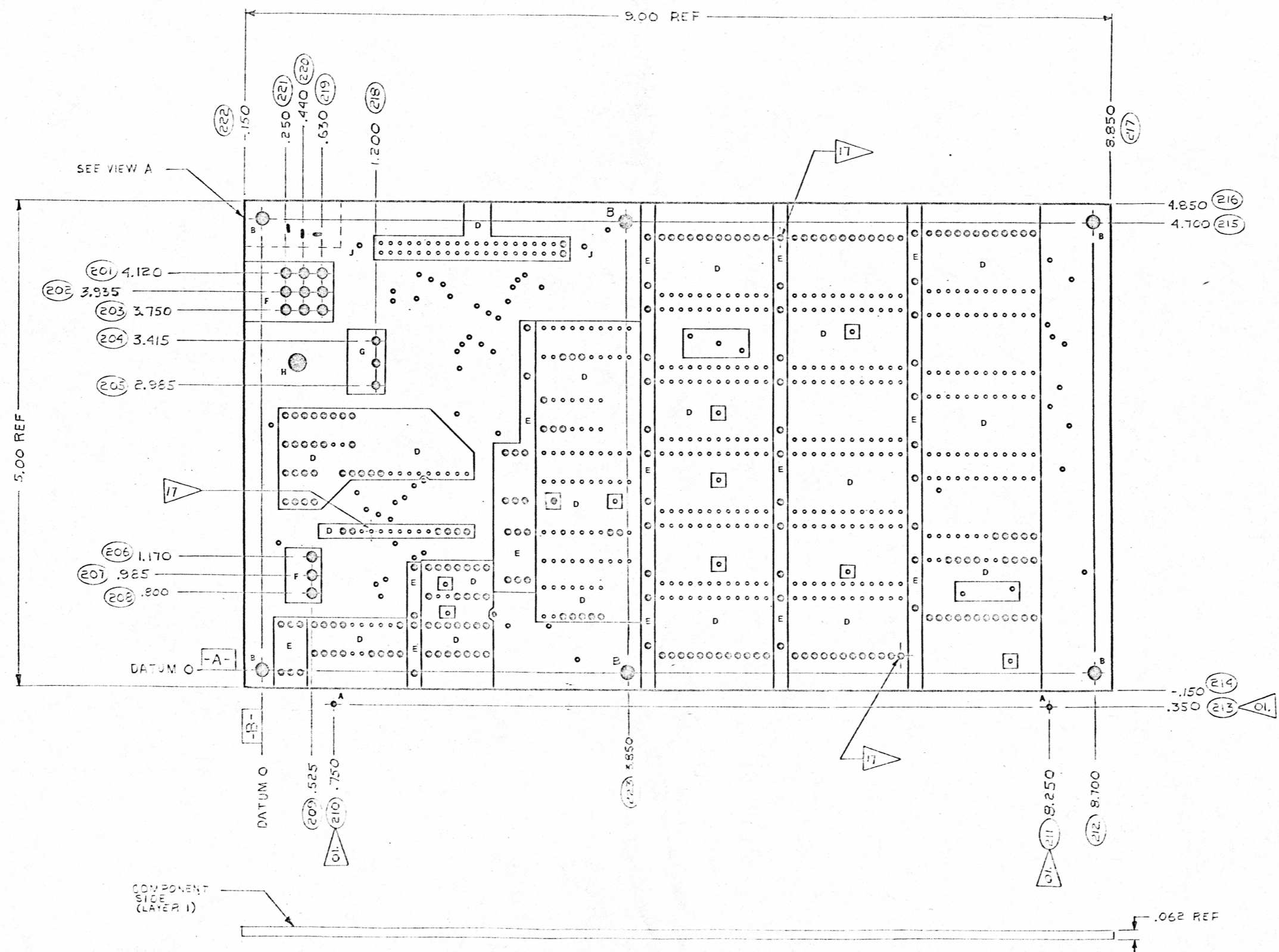
TEXAS INSTRUMENTS
 INCORPORATED
 CALCULATOR PRODUCTS DIVISION

TYPE II

PRINTED WIRING BOARD,
 PRODUCT 477

SCALE: NONE | REV. 19... | SHEET 1 OF 2

D 1055801 B 1085501 A



COMPONENT SIDE (LAYER 1)

DIMENSION IDENT. NUMBER	
USED	NOT USED
201-223	