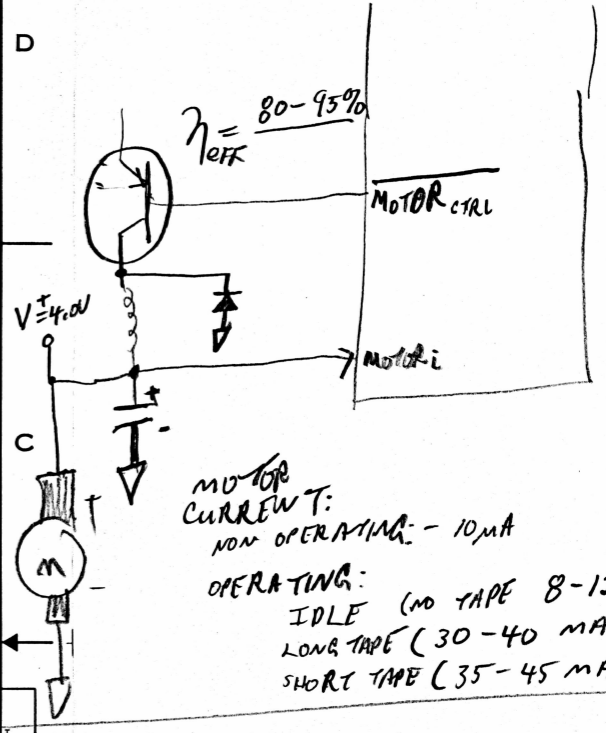
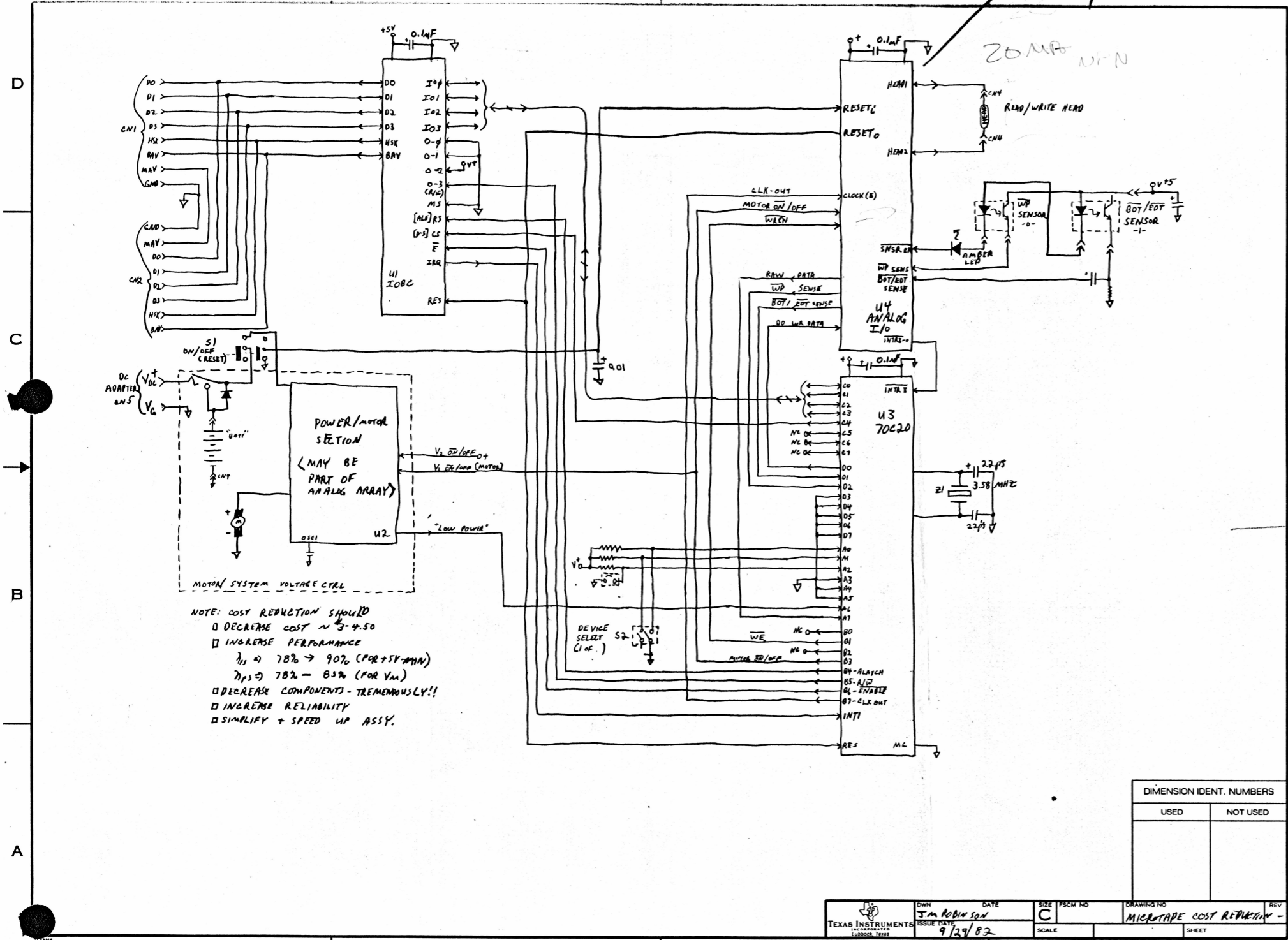




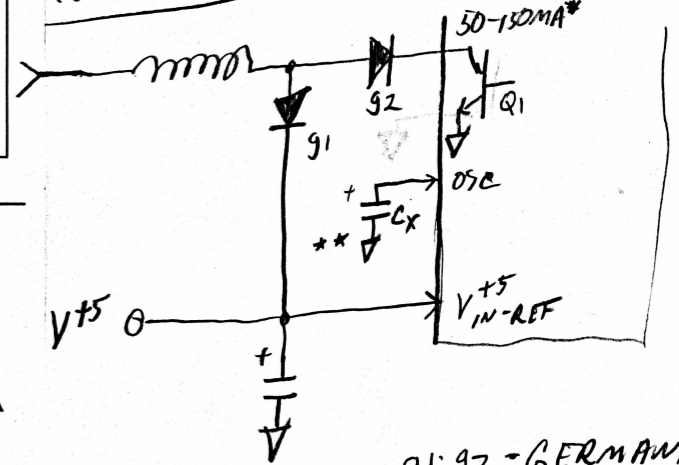


18 PINS / FOR TOTAL SYSTEM CONTROL

MOTOR CONTROL



±5V control (NOT NECESSARILY IMPLEMENTED)



g1, g2 - GERMANIUM  
g2 = REVERSE VOLTAGE PROTECTION

- NOTE: COST REDUCTION SHOULD
- DECREASE COST ~ 3-4.50
  - INCREASE PERFORMANCE
    - $\eta_s \rightarrow 78\% \rightarrow 90\%$  (FOR +5V-MIN)
    - $\eta_p \rightarrow 78\% - 85\%$  (FOR  $V_{in}$ )
  - DECREASE COMPONENTS - TREMENDOUSLY!!
  - INCREASE RELIABILITY
  - SIMPLIFY + SPEED UP ASSY.

DIMENSION IDENT. NUMBERS	
USED	NOT USED

TEXAS INSTRUMENTS LUBBOCK, TEXAS	DWN J. M. ROBINSON	DATE 9/29/82	SIZE C	PSCM NO.	DRAWING NO. MICRATAPE COST REDUCTION -	REV.

\* MAY BE OUTSIDE PACKAGE (Q1)  
\*\* Cx MAY BE DONE INTERNALLY TO CHIP