


NOTES: UNLESS OTHERWISE SPECIFIED

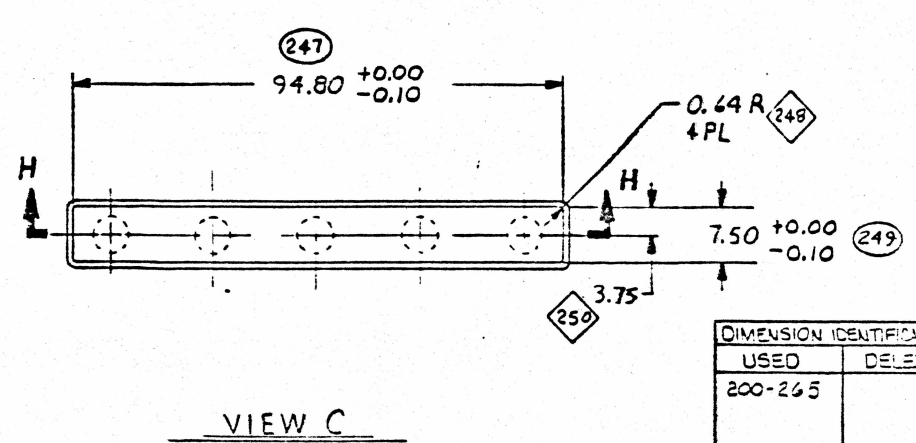
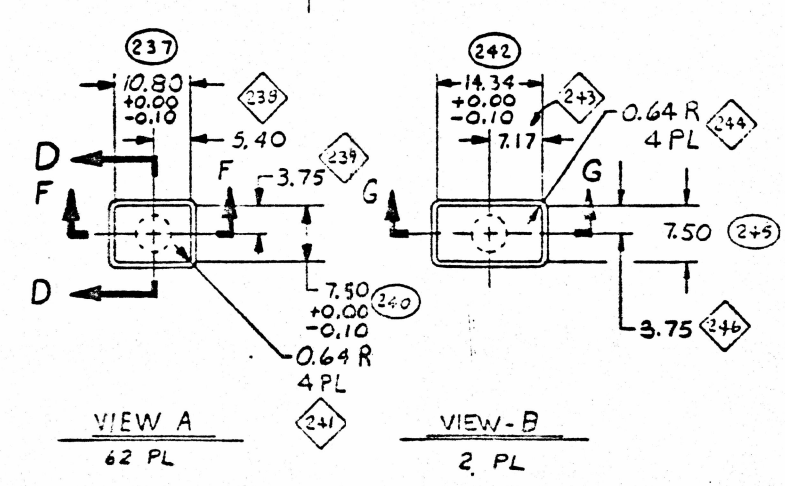
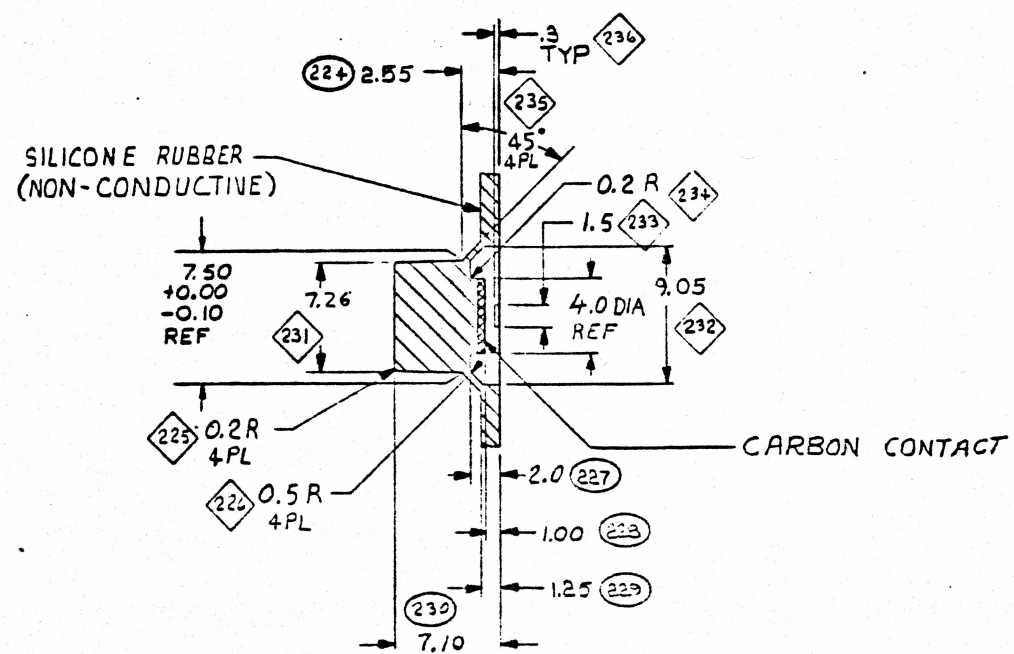
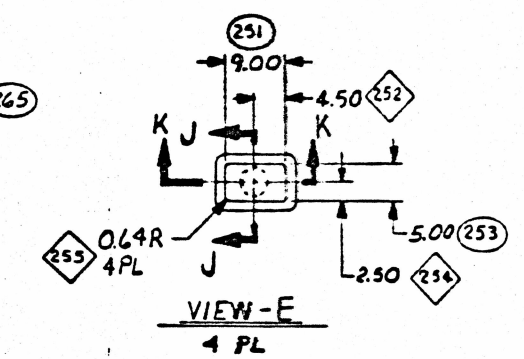
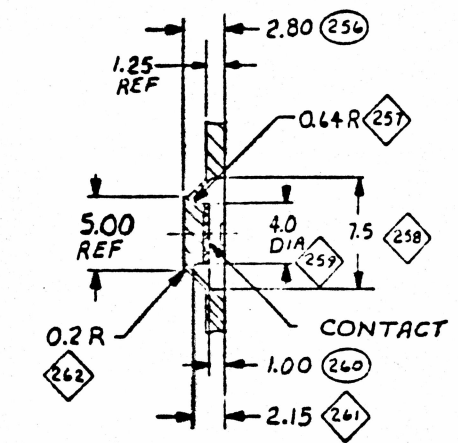
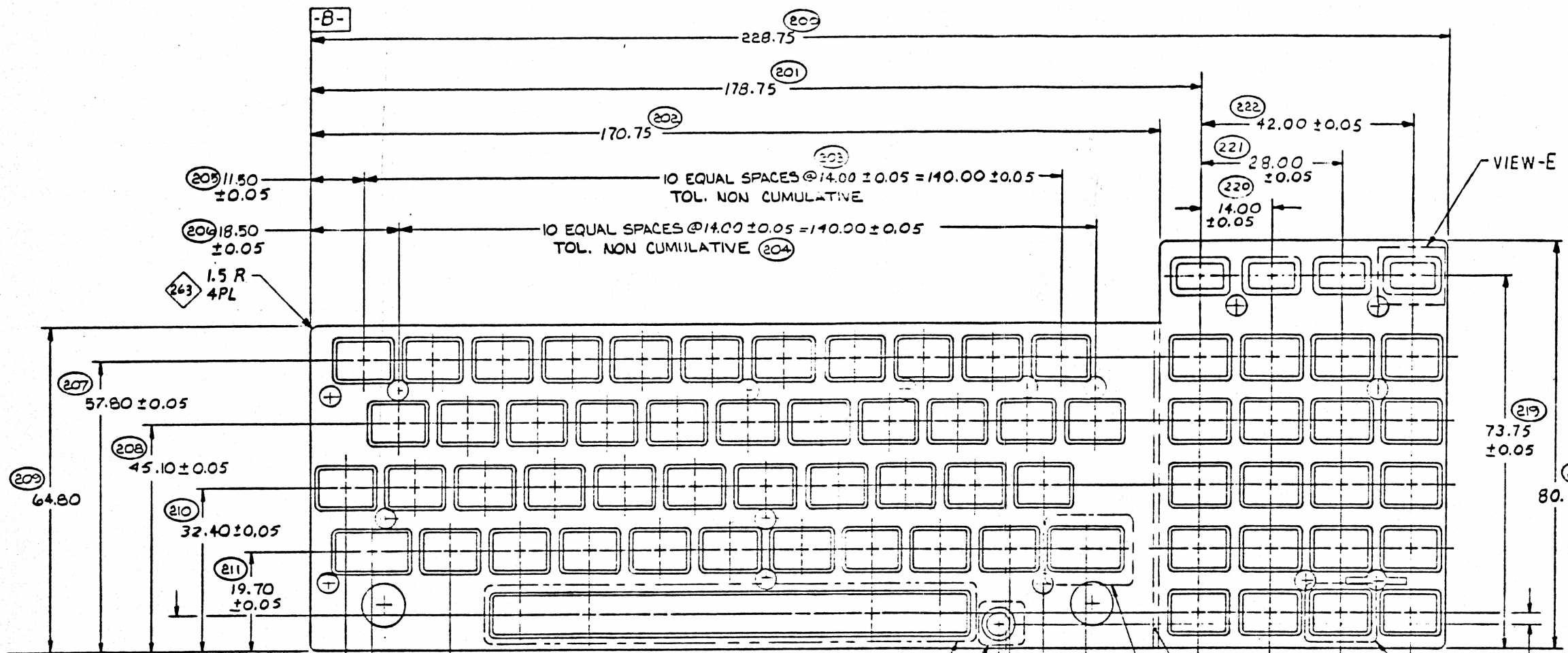
1. NUMBERS LOCATED IN ○ AND ◇ ARE FOR DIMENSION IDENTIFICATION ONLY. (SEE CHART ON EACH SHEET).
2. DO NOT SCALE THIS DRAWING.
3. KEYBOARD TO BE IN ACCORDANCE WITH TEXAS INSTRUMENTS SPECIFICATION NUMBER _____.
4. MECHANICAL PERFORMANCE UNDER NORMAL CONDITIONS:
 - A) KEY TRAVEL (STROKE): 1.0 ± .1
 - B) ACTUATION FORCE: 60 ± 10 GR. INITIALLY.
 - C) RELEASE FORCE: 15 GR. MIN.-TACTILE FEEDBACK.
 - D) CYCLE LIFE: >1,000,000 CYCLES.
 - E) CONTACT BOUNCE: LESS THAN 5MS.
5. ELECTRICAL REQUIREMENTS:-
 - A) CONTACT RESISTANCE: 100 OHMS MAX.-INITIAL (AT 80 μA CURRENT) 350 OHMS MAX. - END OF LIFE AND PDST ENVIRONMENTAL.
 - B) INSULATION RESISTANCE: 10 MEGOHMS @ 50 VOLTS D.C.
 - C) DIELECTRIC STRENGTH: 50 VOLTS RMS MIN.
 - D) TYPICAL OPERATING CONDITIONS: 0.35-9.5 VOLTS, 80 μA CURRENT TYPICAL, 220 μA MAX.
6. ENVIRONMENTAL REQUIREMENTS:
 - A) TEMPERATURE:
 - (a) OPERATING: 32°F TO 135°F - 4 HOURS EACH EXTREME, 20 CYCLES.
 - (b) STORAGE: -40°F TO 158°F - 1000 HOURS EACH EXTREME.
 - B) HUMIDITY:
 - (a) OPERATING: 80% R.H. AT 104°F FOR 48 HOURS.
 - (b) STORAGE: 95% R.H. AT 122°F FOR 360 HOURS.
7. NO SCRATCHES OR STRAINS ARE ALLOWED ON THE SURFACE OF KEYS.
8. KEYS GRAPHICS AND COLOR SPECIFICATION WILL BE PROVIDED BY TEXAS INSTRUMENTS.

REVISIONS				
ZONE	LTR	DESCRIPTION	DATE	APPROVED
	A	NO ECN CHANGE 10-23-81 UPDATED DRAWING, IT WAS SK072781	10/23/81	<i>C. Loge</i>
	B	NO ECN CHANGE 2-17-82 DIM 265 WAS 2.30	2/17/82	
	C	NO ECN CHANGE 2-23-82 547 3. DIM 313 WAS 5.0 DIA, ADDED HOLES & DIMS 324-351.	2/23/82	<i>C. Loge</i>

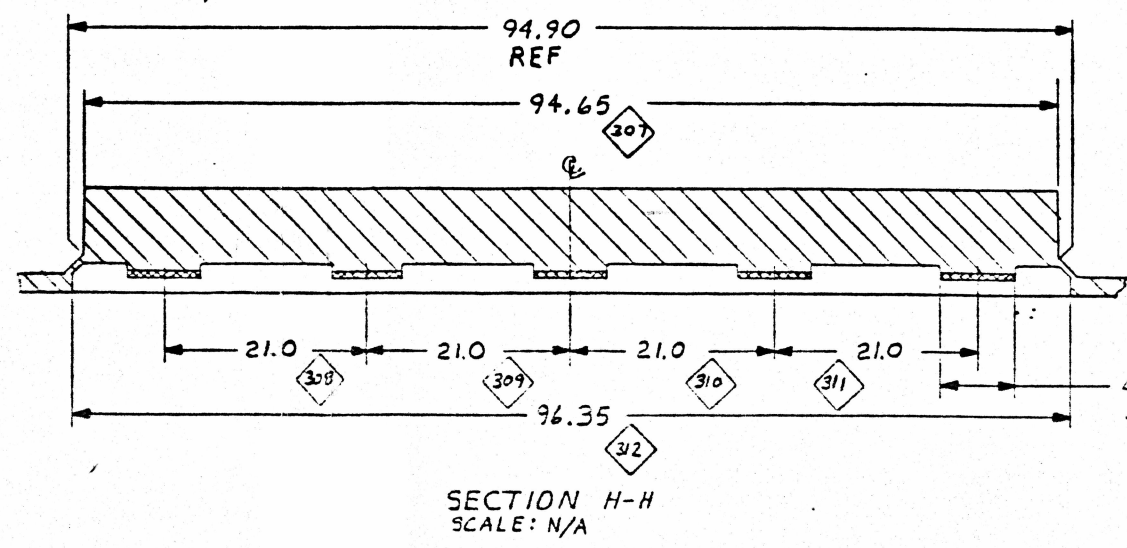
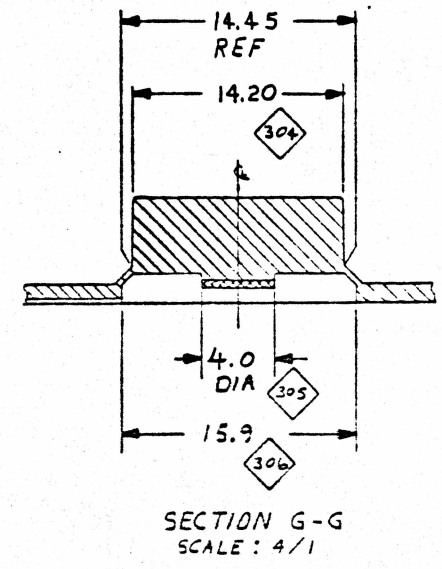
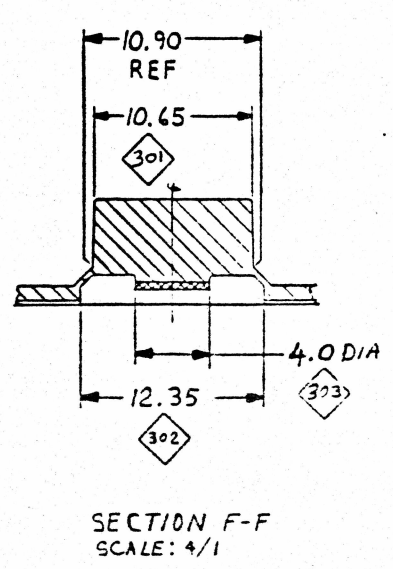
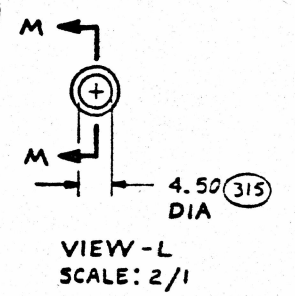
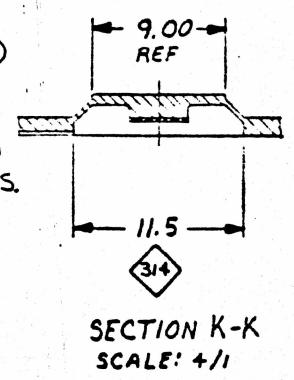
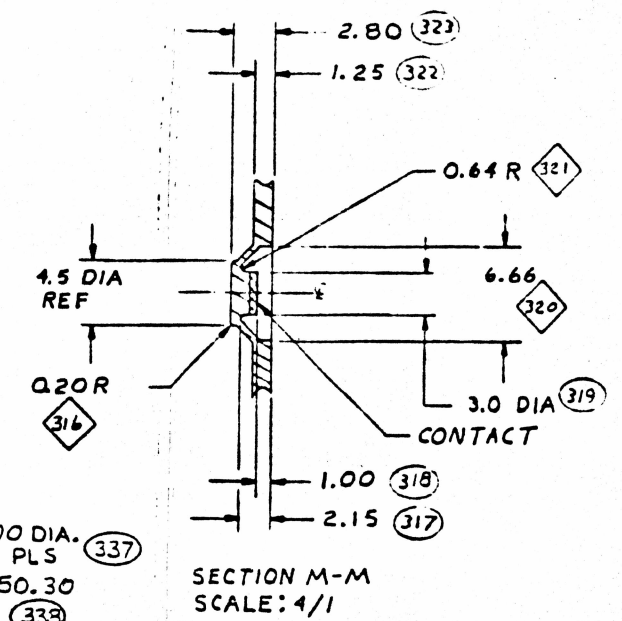
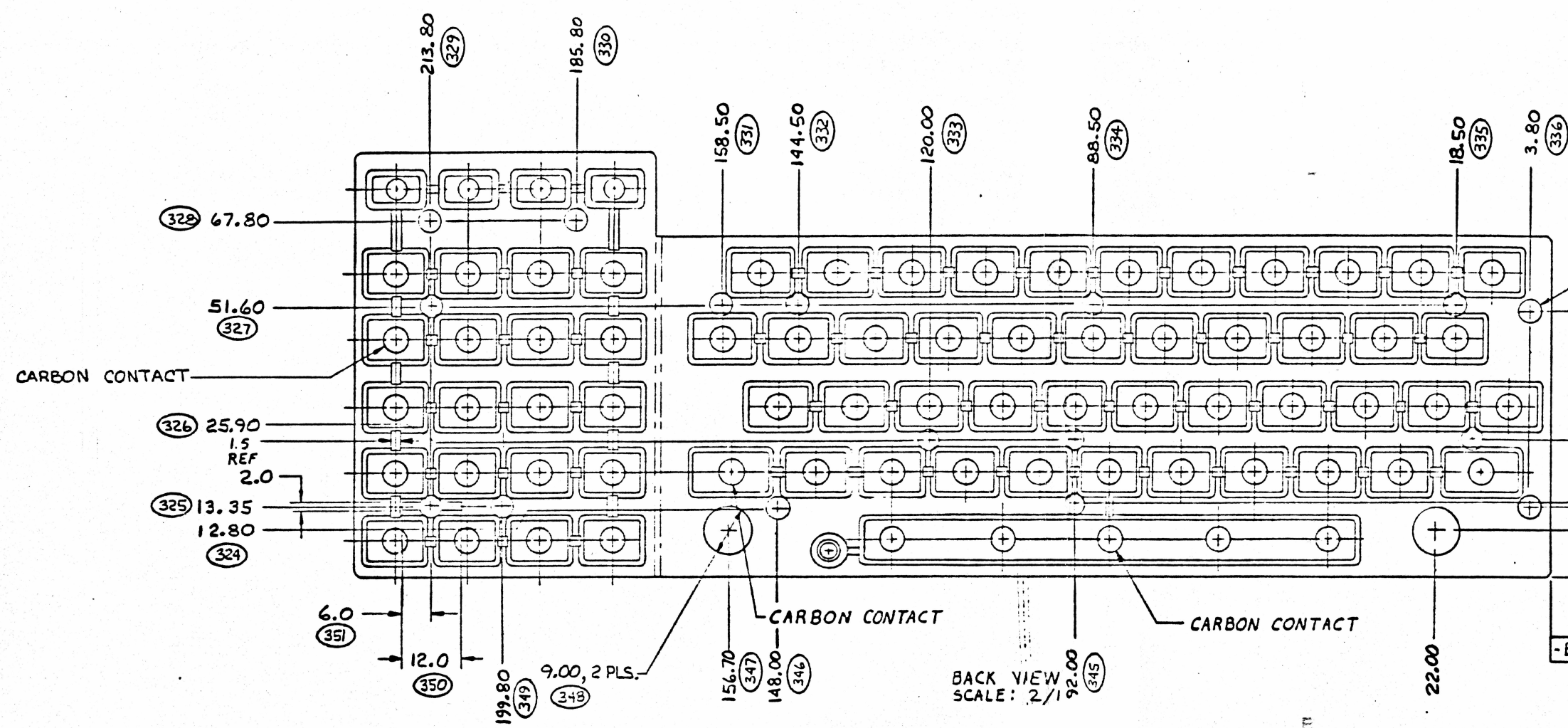
RELEASED FOR TOOLING
 DATE: FEB 23 1982
 SIGN: *Greg Blakely*

1	1044480-1	KEYBOARD WITH KEYS			
ITEM NO	PART NUMBER	DESCRIPTION	TI. PART NUMBER	MANUFACTURER & NUMBER	REMARKS
				MATERIAL	

DIMENSION IDENTIFICATION		UNLESS OTHERWISE SPECIFIED • DIMENSIONS ARE IN MM • TOLERANCES ANGLES - 1° 2 PLACE DECIMALS = 0.15 1 PLACE DECIMALS = 0.25 • DIMENSIONING IN ACCORDANCE WITH ANSI Y14.5	OWN: <i>Charles M. Loge</i>	DATE: <i>2-10-81</i>	 TEXAS INSTRUMENTS INCORPORATED CALCULATOR PRODUCTS DIVISION
USED	NOT USED		DESIGNER: <i>Charles M. Loge</i>	DATE: <i>10-23-81</i>	
		MATERIAL: ELECTRIC CONDUCTIVE AND NON-CONDUCTIVE	APVD:	PRODUCT ENG:	SUP. DWG: D SIZE: D DRAWING NO: 1044480
		APPLICATION:	DESIGN ACTIVITY RELEASE:		SCALE: REV. LTR: C SHEET 1/13



DIMENSION IDENTIFICATION	
USED	DELETED
200-265	



BACK VIEW SCALE: 2/1

DIMENSION IDENTIFICATION	
USED	DELETED
301-351	