
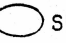


REVISIONS			
ZONE	LTR	DESCRIPTION	DATE

NOTES UNLESS OTHERWISE SPECIFIED.

1. DIMENSIONS ARE IN MILLIMETERS.
2. NUMBERS IN  AND  SHALL BE USED FOR DIMENSION VERIFICATION.
3. PART NUMBER, REVISION LETTER, VENDOR ID MARK, DATE CODE AND COUNTRY OF MANUFACTURE TO BE MARKED ON REFLECTOR PER TI DRAWING 1044478.
4. REAR POLARIZER AND REFLECTOR MUST COVER THE ENTIRE AREA INSIDE THE PERIMETER SEAL. REFLECTOR TO BE NON-CONDUCTIVE WHEN IN CONTACT WITH A RIGID PCB.
5. TOLERANCE NON-ACCUMULATIVE. DIMENSIONS ARE TO CENTERLINE OF PADS.
6. TOLERANCE NON-ACCUMULATIVE. DIMENSIONS ARE TO CENTERLINE OF CHARACTERS.
7. TOP GLASS MAY OVERHANG BY 0.7 OR UNDERHANG BOTTOM GLASS BY 0.3.
8. MINIMUM VIEWING AREA.
9. ARTWORK TO BE SUPPLIED BY VENDOR MUST BE APPROVED BY TEXAS INSTRUMENTS.
10. SEE PARAGRAPH 3.5.9 OF TI DRAWING 1044478 FOR SEGMENT TOLERANCES.
11. FILL HOLE SEAL MAY NOT EXTEND BEYOND THE FRONT SURFACE OF THE TOP GLASS NOR THE REAR SURFACE OF THE BOTTOM GLASS.
12. SEE TI DRAWING 1044478 FOR GENERAL SPECIFICATIONS.
13. SEE TI DRAWING 1034551 FOR ENVIRONMENTAL REQUIREMENTS.
14. DO NOT SCALE THIS DRAWING.

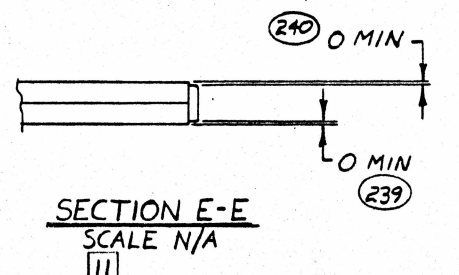
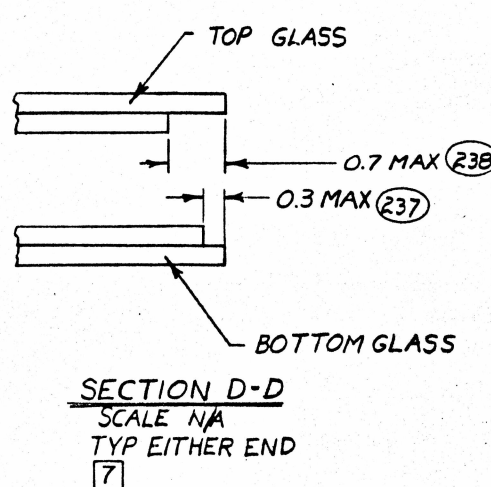
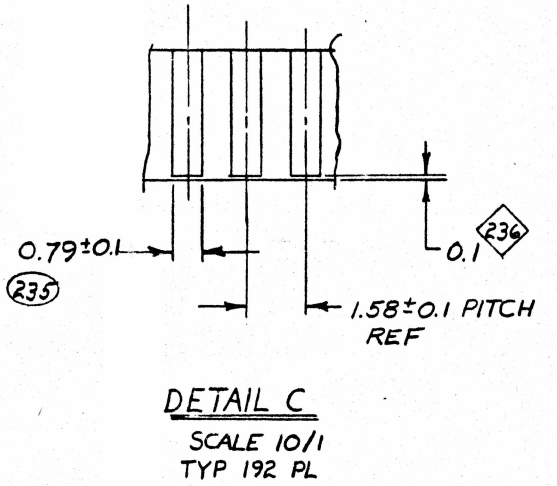
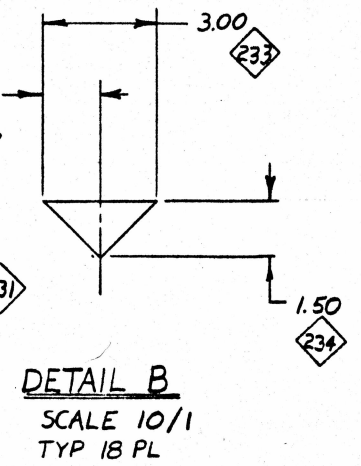
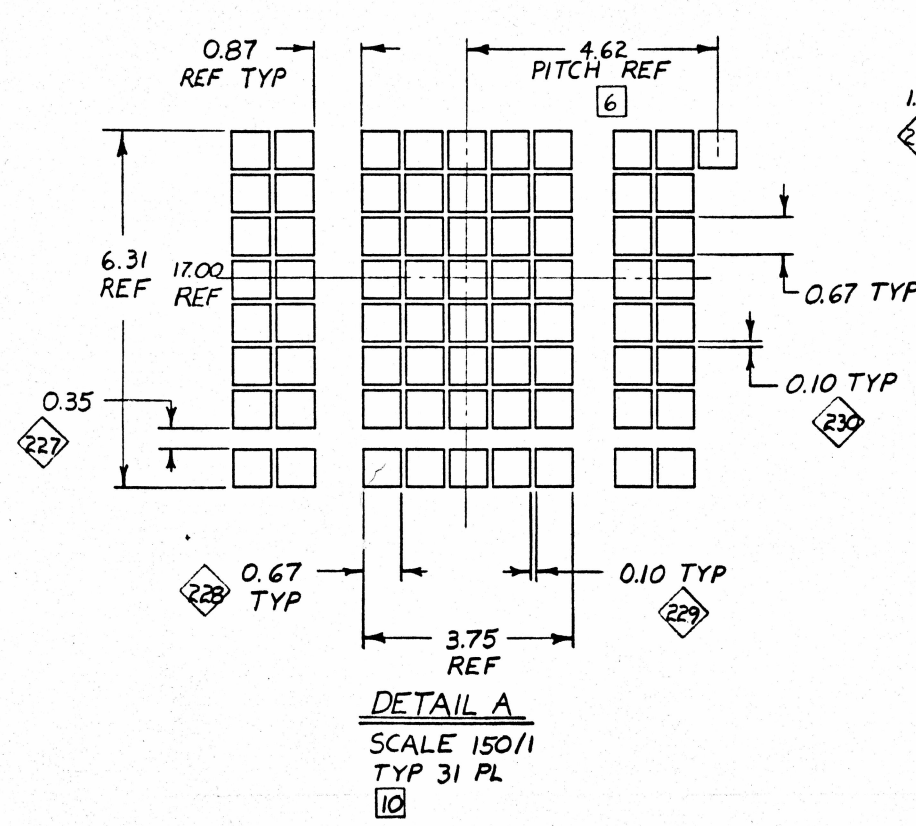
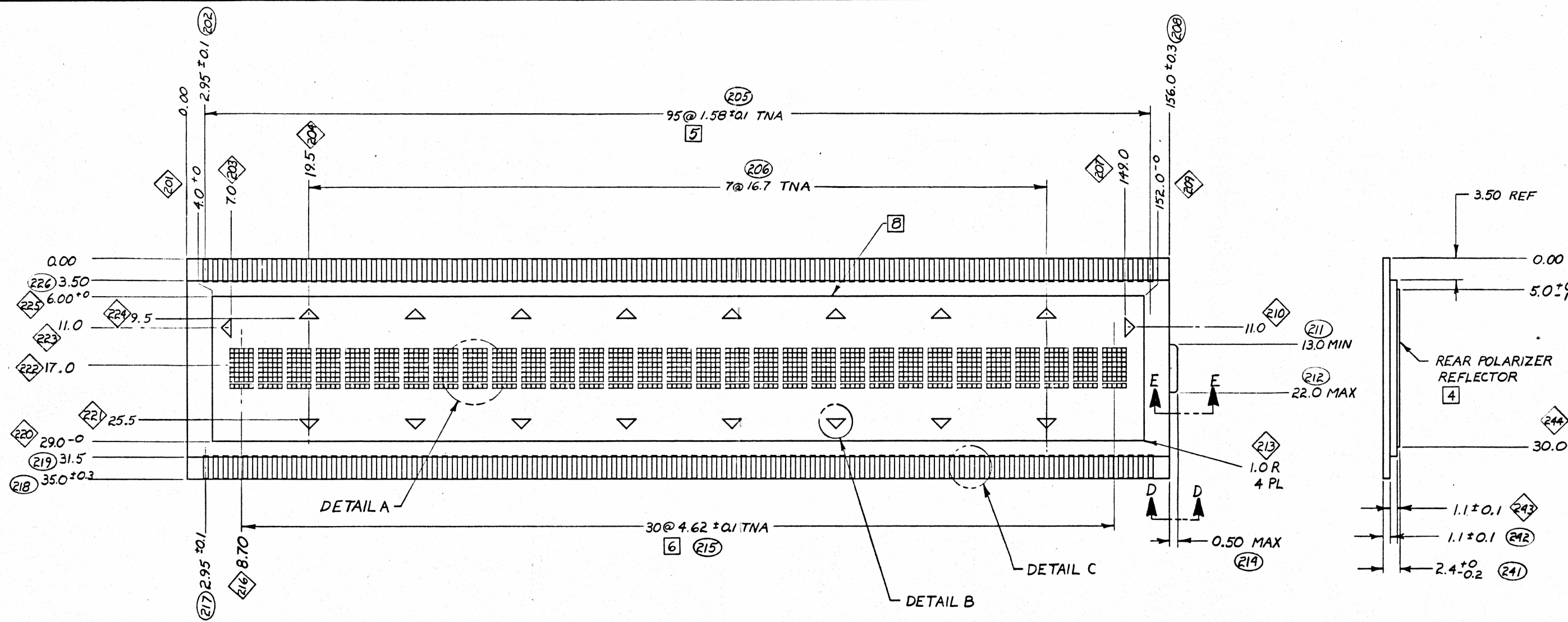
DIMENSION IDENTIFIERS		ITEM NO	PART NUMBER	DESCRIPTION	TI. PART NUMBER	MANUFACTURER & NUMBER	REMARKS
USED	NOT USED						

UNLESS OTHERWISE SPECIFIED
 • DIMENSIONS ARE IN MM
 • TOLERANCES
 ANGLES ±
 2 PLACE DECIMALS ±
 1 PLACE DECIMALS ±
 • DIMENSIONING IN ACCORDANCE WITH ANSI Y14.5
 MATERIAL:

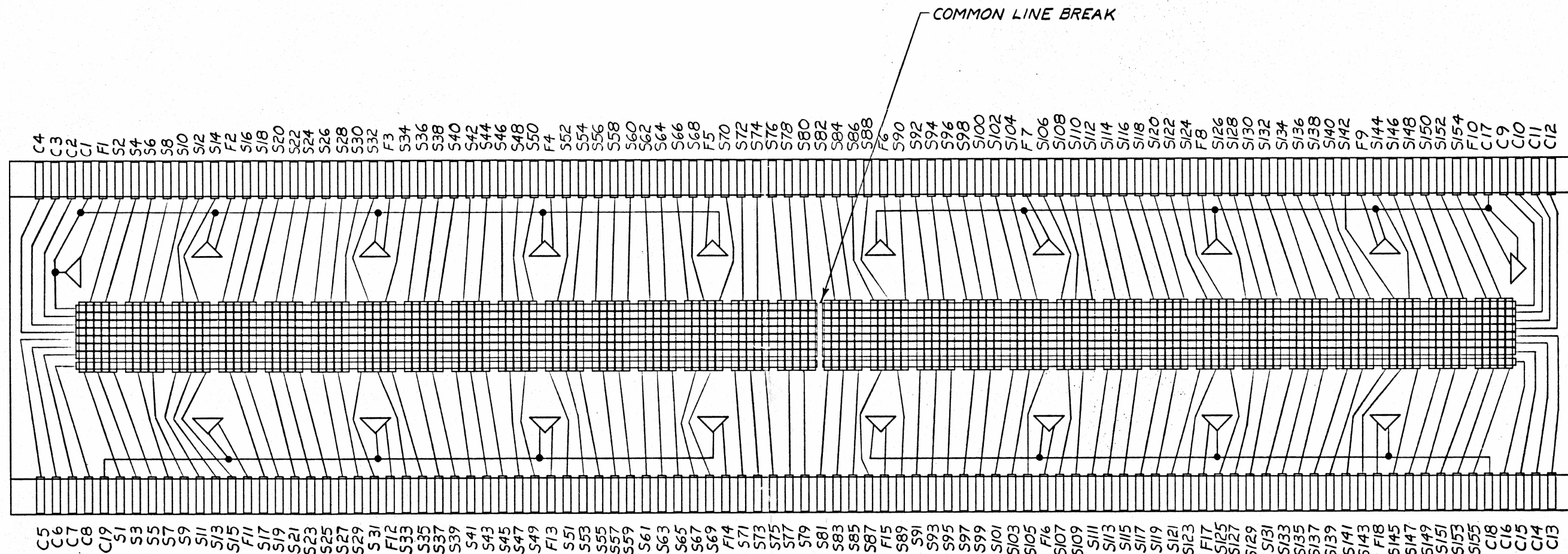
PARTS LIST
 DWN: *[Signature]*
 CHK:
 DESIGNER:
 QA:
 APVD:
 PRODUCT ENG:
 DESIGN ACTIVITY RELEASE:

TEXAS INSTRUMENTS
 INCORPORATED
 CALCULATOR PRODUCTS DIVISION
 DISPLAY, LCD
 1/16 DUTY CYCLE

SUP DWG: D SIZE: D DRAWING NO: 1044479
 SCALE 3/1 REV LTR: SHEET 1 OF 3



DIMENSION IDENTIFIERS	
USED	NOT USED
201-245	



ELECTRICAL INTERCONNECT

SCALE N/A

DIMENSION IDENTIFIERS

USED	NOT USED